

IF IT IS FOUND DESIRABLE TO CHANGE ANY TOLERANCE OR OTHER DETAIL SPECIFIED ON THIS DRAWING NOTIFY THE PURCHASER PROMPTLY.

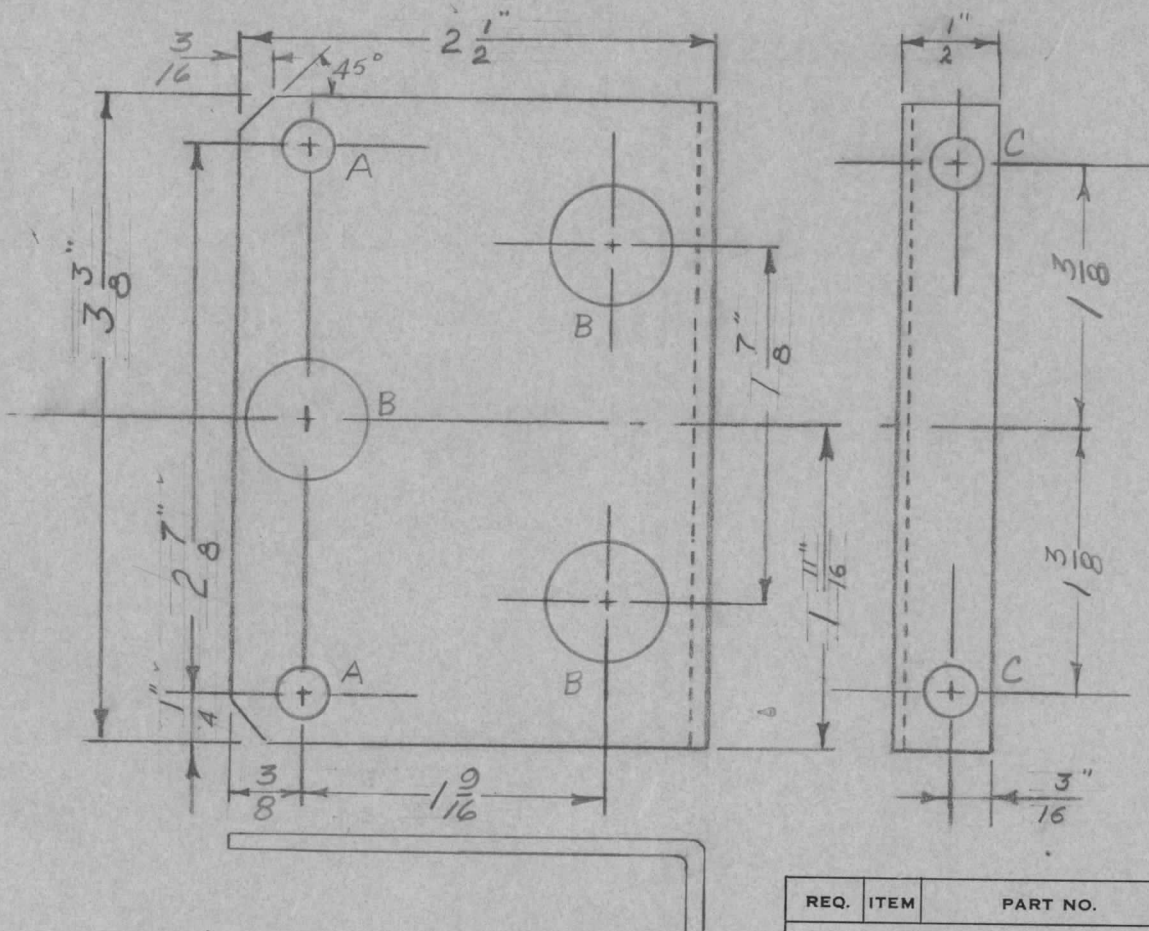
MS-10134

MAXIMUM ALLOWABLE TOLERANCES HAVE BEEN DETERMINED AND DEVIATIONS WILL BE CAUSE FOR REJECTION. REMOVE ALL BURRS AND SHARP EDGES

USED ON

MODEL PROJECT NO. ASS'Y. NO. DATE

A-10066 3-11-55



A-2 HOLES 3/16 DIA.
 B-3 HOLES 5/8 DIA.
 C-2 HOLES 9/16 DIA.

REQ.	ITEM	PART NO.	DESCRIPTION	SYMBOL
			TMC (Canada) LIMITED OTTAWA ONTARIO	
STOCK SIZE			<i>BRACKET (SELECTOR MTG.)</i>	
MATERIAL		WEIGHT PER PC.	<i>TRMTR. RF-SWITCHING UNIT</i>	
<i>.064 ALUMINUM</i>				
TYPE & TEMPER			<i>M.A.C.</i>	
<i>575 1/2 HARD</i>				
HEAT TREAT. SPEC.			<i>Waa</i>	
<i>TMC-5101 & 5107</i>				
FINISH & SPEC. NO.			FINAL APPROVAL	
			MS-10134	

ISSUE	ITEM	CHANGED FROM	DATE	CN. NO.	DRAFTS	CHECKER	ENG. APP.
TOLERANCES							
SCALE							
ALL OTHERS		DEC. DIM. ± 1/64		FRAC. DIM. ± 1/64		ANGULAR DIM. ±	
DRILL, PUNCH, COMMERCIAL STOCK SIZES AND MANUFACTURERS TOLERANCES ARE NOT INCLUDED.							