

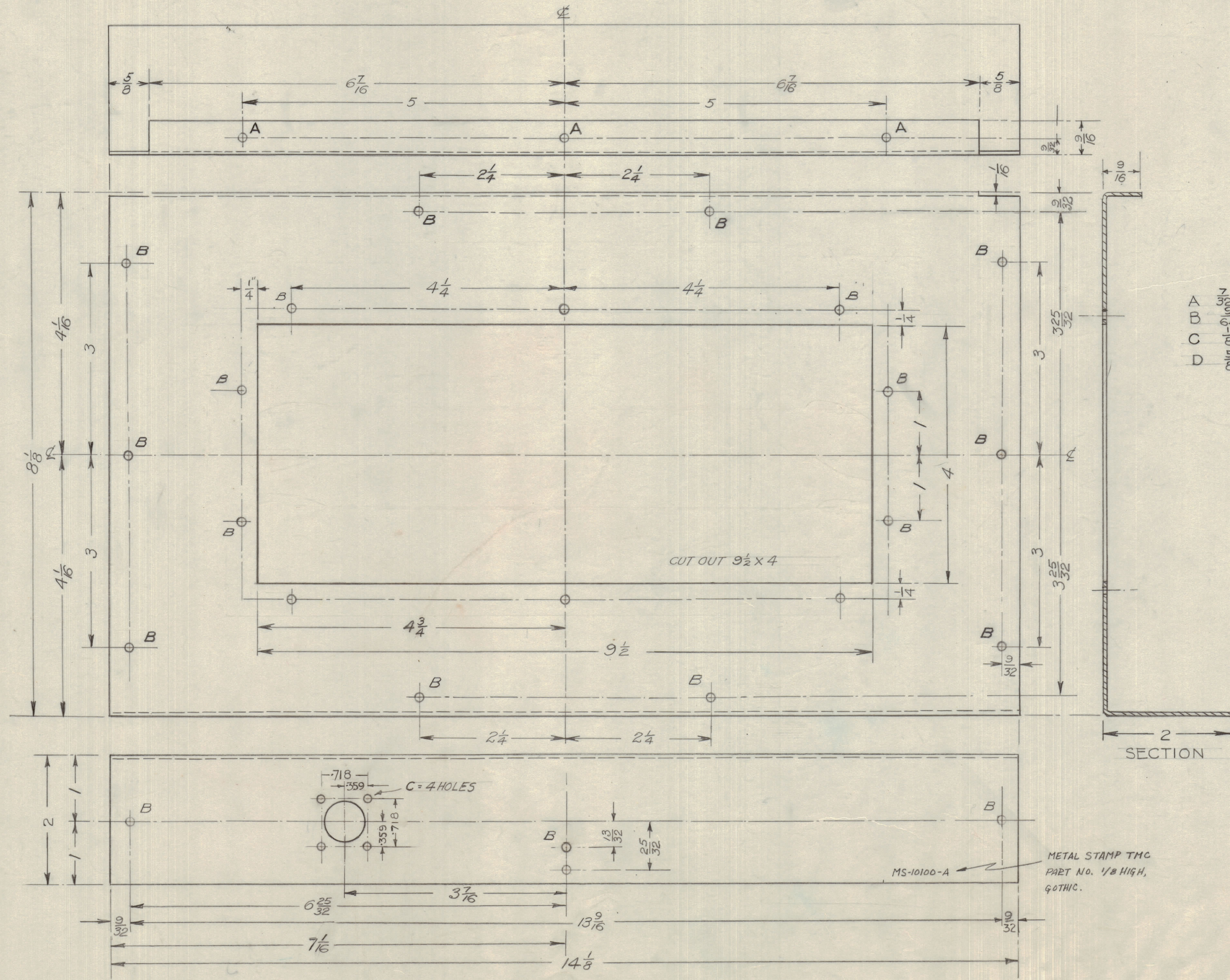
IF IT IS FOUND DESIRABLE TO CHANGE ANY TOLERANCE OR OTHER DETAIL SPECIFIED ON THIS DRAWING NOTIFY THE PURCHASER PROMPTLY.
 MAXIMUM ALLOWABLE TOLERANCES HAVE BEEN DETERMINED AND DEVIATIONS WILL BE CAUSE FOR REJECTION. REMOVE ALL BURRS AND SHARP EDGES

NOTICE TO PERSONS RECEIVING THIS DRAWING
 THE TECHNICAL MATERIEL CORPORATION claims proprietary right in the material disclosed hereon. This drawing is issued in confidence for engineering information only and may not be reproduced or used to manufacture anything shown hereon without permission from THE TECHNICAL MATERIEL CORPORATION to the user. This drawing is loaned for mutual assistance and is subject to recall at any time.
 Property of:
 THE TECHNICAL MATERIEL CORPORATION
 MAMARONECK, NEW YORK

FRONT

TOP

REAR



- A $\frac{3}{16}$ PUNCH - 3 HOLES
- B $\frac{3}{16}$ PUNCH - 24 HOLES
- C $\frac{1}{4}$ PUNCH - 4 HOLES
- D $\frac{1}{4}$ PUNCH - 1 HOLE

SECTION

METAL STAMP TMC
 PART NO. 1/8 HIGH,
 GOTHIC.

MS-10100 A

Δ	1	13- ⁹ / ₁₆ DIM WAS 12- ⁹ / ₁₆	11-4-42	7673	CS	YSP	WSP
ISSUE	ITEM	CHANGED FROM	DATE	DN. NO.	DRAFTS	CHECKER	ENG. APP.
TOLERANCES		SCALE:					
ALL OTHERS	DEC. DIM. ± FRAC. DIM. ± ANGULAR DIM. ±	DRILL, PUNCH, COMMERCIAL STOCK SIZES AND MANUFACTURERS TOLERANCES ARE NOT INCLUDED.					

MODEL	PROJECT NO.	ASSY. NO.	DATE
			21/11/55

REQ. ITEM	PART NO.	DESCRIPTION	SYMBOL
0-064		TMC (Canada) LIMITED	
STOCK SIZE		OTTAWA ONTARIO	
MATERIAL	WEIGHT PER PC.	ALUMINUM	
TYPE & TEMPER		BOTTOM COVER	
HEAT TREAT. SPEC.		LF/MF BEACON C/O DUMMY LOAD	
FINISH & SPEC. NO.		E.W.B.G.	
		DRAWN	ELEC. DES. APP. MECH. DES. APP.
		CHECKED	FINAL APPROVAL
			MS-10100 A