

IF IT IS FOUND DESIRABLE TO CHANGE ANY TOLERANCE OR OTHER DETAIL SPECIFIED ON THIS DRAWING NOTIFY THE PURCHASER PROMPTLY.

STANDARD DRAWING

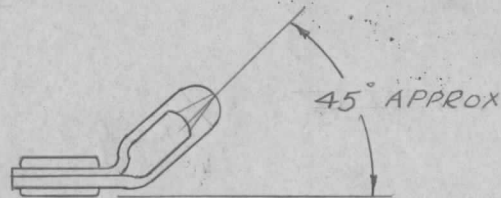
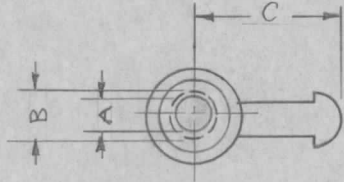
MS-105 A

MAXIMUM ALLOWABLE TOLERANCES HAVE BEEN DETERMINED AND DEVIATIONS WILL BE CAUSE FOR REJECTION. REMOVE ALL BURRS AND SHARP EDGES

Quan Req.	USED ON			
	MODEL	PROJECT NO.	ASS'Y. NO.	DATE
2	BAC-1			
2	BAC-1-S-20			

STANDARD

OFFSET



C-DIMENSION PRIOR TO BEND (OFFSET)

TMC NO.	CAT. NO.	HOLE SIZE IN EYELET	HOLE SIZE WITHOUT EYELET	COUPLING LENGTH	USED ON CHAIN SIZE
MS-105-1	6-A	—	.167	13/32"	NO. 6
MS-105-2	6-AD	.130	—	13/32"	NO. 6
MS-105-3	10-A	.125	.167	1/2"	NO. 10
MS-105-4	10-AN	—	.230	9/16"	NO. 10
MS-105-5	10-AD	.193	—	9/16"	NO. 10
MS-105-6	13-AN	.193	.230	11/16"	NO. 13
MS-105-7	20-A	.250	.302	1-1/32"	NO. 20

TYPE DES. TO BE IN FOLLOWING FORM

MS-105-1-S-O
 TMC-NO STYLE
 S- STANDARD
 O- OFFSET

REF. BEAD CHAIN MFG. CO.

REQ.	ITEM	PART NO.	DESCRIPTION	SYMBOL
		#	THE TECHNICAL MATERIEL CORP. MAMARONECK, NEW YORK	
		STOCK SIZE		
		BRASS	COUPLING, CHAIN	
		MATERIAL	WEIGHT PER PC.	
		#		
		TYPE & TEMPER	P.B. 9-16-54	
		#	DRAWN	ELEC. DES. APP. MECH. DES. APP.
			COB	
		HEAT TREAT. SPEC.	CHECKED	FINAL APPROVAL
		NICKEL PLATE		MS-105 A
		FINISH & SPEC. NO.		

A	1	REDRAWN- STYLE ADDED	9-17-54	1	P.B.	COB	WDE
ISSUE	ITEM	CHANGED FROM	DATE	CN. NO.	DRAFTS	CHECKER	ENG. APP.

TOLERANCES		SCALE
ALL OTHERS	DEC. DIM. ± .005 FRAC. DIM. ± 1/64 ANGULAR DIM. ±	DRILL, PUNCH, COMMERCIAL STOCK SIZES AND MANUFACTURERS TOLERANCES ARE NOT INCLUDED.

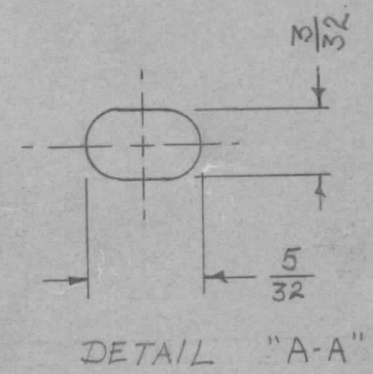
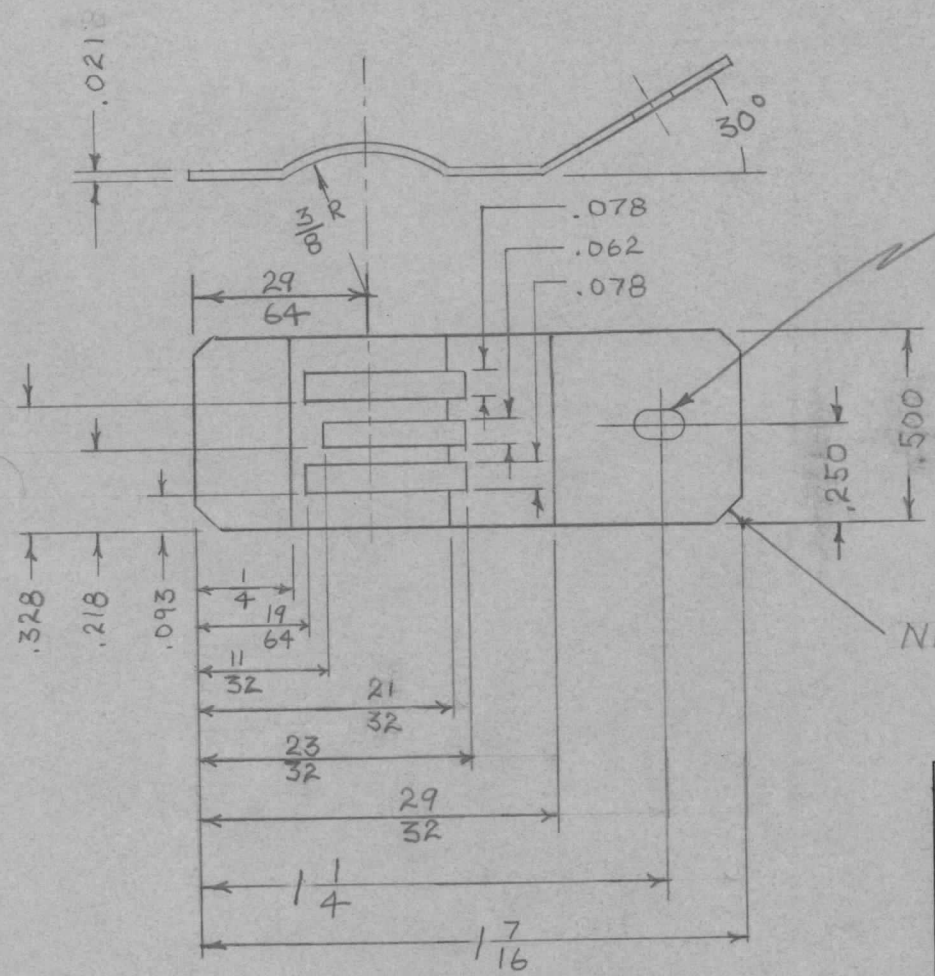
IF IT IS FOUND DESIRABLE TO CHANGE ANY TOLERANCE OR OTHER DETAIL SPECIFIED ON THIS DRAWING NOTIFY THE PURCHASER PROMPTLY.

MAXIMUM ALLOWABLE TOLERANCES HAVE BEEN DETERMINED AND DEVIATIONS WILL BE CAUSE FOR REJECTION. REMOVE ALL BURRS AND SHARP EDGES

MS-106 A

USED ON

MODEL	PROJECT NO.	ASS'Y. NO.	DATE
XTR	116	-H-	9-13-52




NICK 4 CORNERS 1/16

REQ.	ITEM	PART NO.	DESCRIPTION	SYMBOL
			THE TECHNICAL MATERIEL CORP. MAMARONECK, NEW YORK	
		25 GA. .021 THK	SLIP PLATE	
		STAINLESS STEEL		
		AISI 305		
		WSE 9/13/52		
		S-104 PASSIVATE		
		MS-106		A

A	1	REDRAWN	9/13/52	+	WSE		
ISSUE	ITEM	CHANGED FROM	DATE	CN. NO.	DRAFTS	CHECKER	ENG. APP.
TOLERANCES			SCALE 1" = 1/2"				
ALL OTHERS	DEC. DIM. ± .003 FRAC. DIM. ± 1/64 ANGULAR DIM. ± 5°		DRILL, PUNCH, COMMERCIAL STOCK SIZES AND MANUFACTURERS TOLERANCES ARE NOT INCLUDED.				

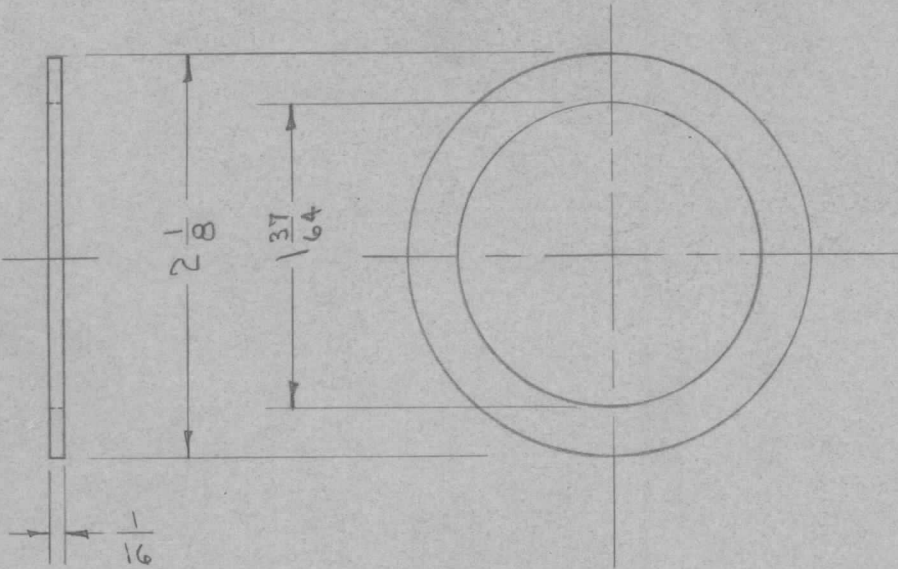
IF IT IS FOUND DESIRABLE TO CHANGE ANY TOLERANCE OR OTHER DETAIL SPECIFIED ON THIS DRAWING NOTIFY THE PURCHASER PROMPTLY.

MS-107 

MAXIMUM ALLOWABLE TOLERANCES HAVE BEEN DETERMINED AND DEVIATIONS WILL BE CAUSE FOR REJECTION. REMOVE ALL BURRS AND SHARP EDGES

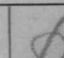
USED ON

MODEL	PROJECT NO.	ASS'Y. NO.	DATE
ES85/U	135	A-113	7-23-57
TCA-85/12	154	A-133	9-4-57



REQ.	ITEM	PART NO.	DESCRIPTION	SYMBOL
		$\frac{1}{16}$ (.062) THK.	THE TECHNICAL MATERIEL CORP.	
		STOCK SIZE	MAMARONECK, NEW YORK	
		LEAD	SEAL WASHER	
		MATERIAL		
		WEIGHT PER PC.		
		TYPE & TEMPER	C.D.D. 1-23-53	
		HEAT TREAT. SPEC.	DRAWN	ELEC. DES. APP. MECH. DES. APP.
		FINISH & SPEC. NO.	CHECKED	FINAL APPROVAL

		REDRAWN NO CHANGE.	1-23-53	C.D.D.	JADe	0976	
ISSUE	ITEM	CHANGED FROM	DATE	CN. NO.	DRAFTS	CHECKER	ENG. APP.
TOLERANCES		SCALE					
ALL OTHERS	DEC. DIM. \pm	DRILL, PUNCH, COMMERCIAL STOCK SIZES AND MANUFACTURERS TOLERANCES ARE NOT INCLUDED.					
	FRAC. DIM. \pm $\frac{1}{64}$						
	ANGULAR DIM. \pm						

MS-107 

IF IT IS FOUND DESIRABLE TO CHANGE ANY TOLERANCE OR OTHER DETAIL SPECIFIED ON THIS DRAWING NOTIFY THE PURCHASER PROMPTLY.

MAXIMUM ALLOWABLE TOLERANCES HAVE BEEN DETERMINED AND DEVIATIONS WILL BE CAUSE FOR REJECTION. REMOVE ALL BURRS AND SHARP EDGES

UNLESS OTHERWISE SPECIFIED
DIMENSIONS ARE IN INCHES AND INCLUDE
CHEMICALLY APPLIED OR PLATED FINISHES

DECIMALS	FRACTIONS
X ± .05	± 1/64
.XX ± .01	ANGLES
.XXX ± .005	± 0° 30'

TOLERANCES

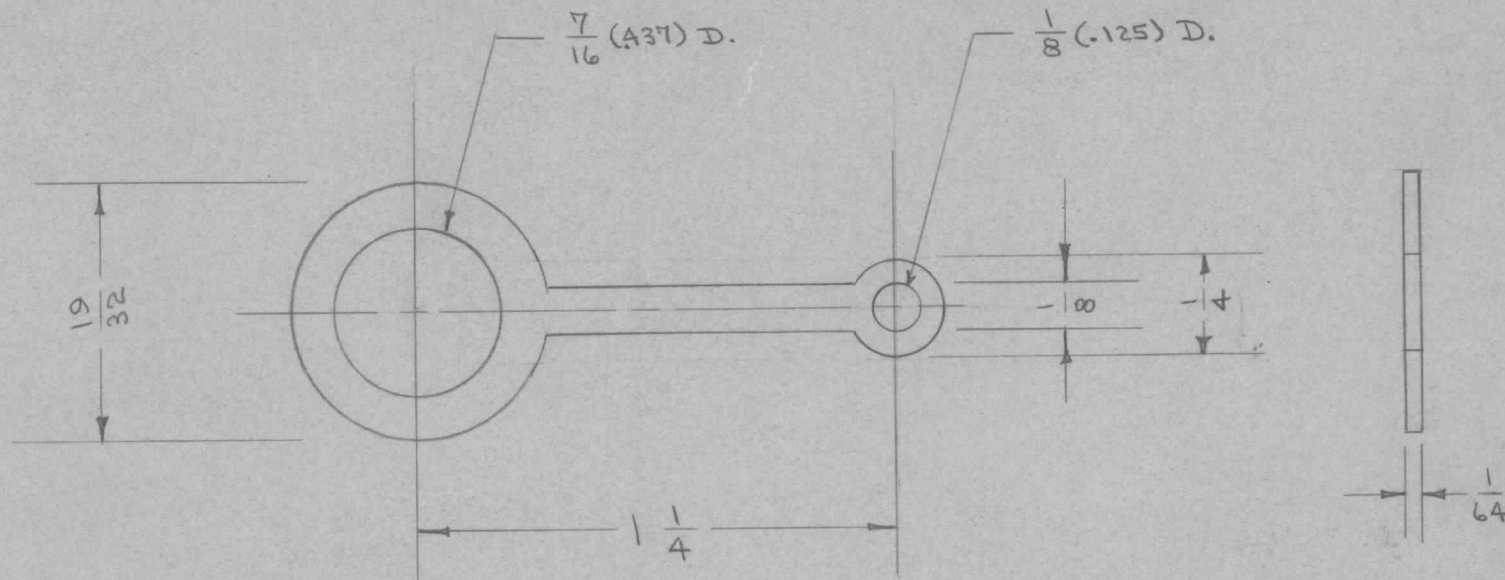
CUT HERE

MS-108



USED ON

MODEL	PROJECT NO.	ASS'Y. NO.	DATE
ES85/U	135	A-113	7-23-57



REQ.	ITEM	PART NO.	DESCRIPTION	SYMBOL
		1/64(.015) THK.	THE TECHNICAL MATERIEL CORP. MAMARONECK, NEW YORK	
		STOCK SIZE		
		BRASS	LUG	
		MATERIAL	WEIGHT PER PC.	
		#		
		TYPE & TEMPER	C.D.D. 1-23-53	
		HEAT TREAT. SPEC.	DRAWN	ELEC. DES. APP. MECH. DES. APP.
		TIN.	FADe 1-28-53	9/26/69
		FINISH & SPEC. NO.	CHECKED	FINAL APPROVAL
				MS-108

Ø	ORIGINAL RELEASE	9/26/69					
	REDRAWN NO CHANGE	1-23-53		C.D.D.	FADe	PPB	
ISSUE	ITEM	CHANGED FROM	DATE	CN. NO.	DRAFTS	CHECKER	ENG. APP.
		TOLERANCES		SCALE	#		
ALL OTHERS	DEC. DIM. ± FRAC. DIM. ± 1/64 ANGULAR DIM. ±	DRILL, PUNCH, COMMERCIAL STOCK SIZES AND MANUFACTURERS TOLERANCES ARE NOT INCLUDED.					

IF IT IS FOUND DESIRABLE TO CHANGE ANY TOLERANCE OR OTHER DETAIL SPECIFIED ON THIS DRAWING NOTIFY THE PURCHASER PROMPTLY.

MAXIMUM ALLOWABLE TOLERANCES HAVE BEEN DETERMINED AND DEVIATIONS WILL BE CAUSE FOR REJECTION. REMOVE ALL BURRS AND SHARP EDGES

UNLESS OTHERWISE SPECIFIED

DIMENSIONS ARE IN INCHES AND INCLUDE CHEMICALLY APPLIED OR PLATED FINISHES

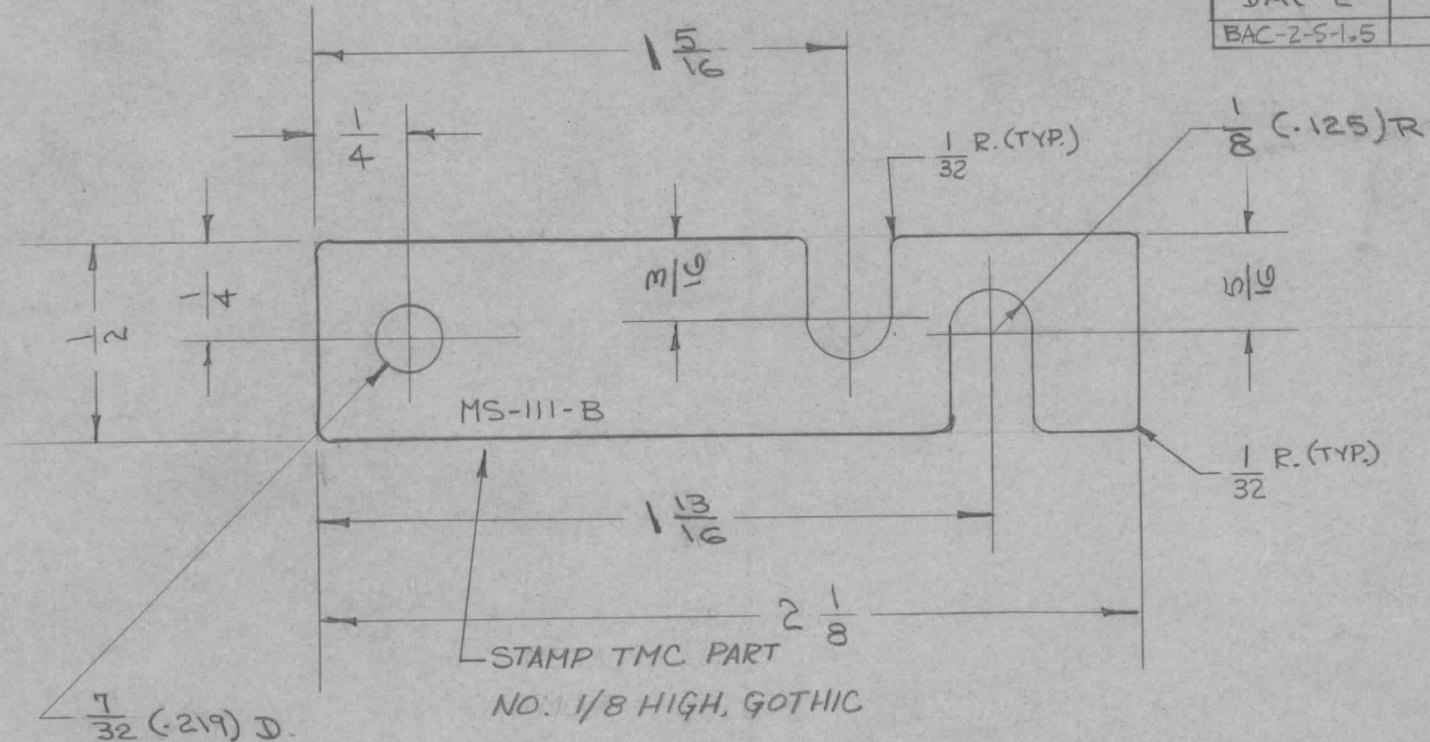
DECIMALS	TOLERANCES	FRACTIONS
X ± .05		± 1/64
.XX ± .01		ANGLES ± 0° 30'
.XXX ± .005		

CUT HERE GUARANTEED 2-66

MS-111 B

USED ON

MODEL	PROJECT NO.	ASS'Y. NO.	DATE
BAC-2-S-26	108	A-115	7-25-52
BAC-2	157	A-192	10-17-52
BAC-2-S-1.5	230	A-192	9-16-53



B	1	1/32 R ADDED	10/10/62	7405	GS	Jade	JAD
A	1	SLOTS MOVED	19/24/54	2	JAD	CSB	JMS
*	*	REDRAWN NO CHANGE	1-23-53	1	C.D.D.	JAD	JMS

ISSUE	ITEM	CHANGED FROM	DATE	CN. NO.	DRAFTS	CHECKER	ENG. APP.
-------	------	--------------	------	---------	--------	---------	-----------

TOLERANCES

SCALE

ALL OTHERS

DEC. DIM. ±
FRAC. DIM. ± 1/64
ANGULAR DIM. ±

DRILL, PUNCH, COMMERCIAL STOCK SIZES AND MANUFACTURERS TOLERANCES ARE NOT INCLUDED.

REQ.	ITEM	PART NO.	DESCRIPTION	SYMBOL
		.031 THK.	THE TECHNICAL MATERIEL CORP. MAMARONECK, NEW YORK	LINK
		STOCK SIZE		
		BRASS		
		MATERIAL	WEIGHT PER PC.	
		TYPE & TEMPER	C.D.D. 1-23-53	
			DRAWN	ELEC. DES. APP.
			JAD 1-28-53	MECH. DES. APP.
		HEAT TREAT. SPEC.	CHECKED	FINAL APPROVAL
		S-105 CADMIUM PLATE		MS-111 B
		FINISH & SPEC. NO.		

IF IT IS FOUND DESIRABLE TO CHANGE ANY TOLERANCE OR OTHER DETAIL SPECIFIED ON THIS DRAWING NOTIFY THE PURCHASER PROMPTLY.

MAXIMUM ALLOWABLE TOLERANCES HAVE BEEN DETERMINED AND DEVIATIONS WILL BE CAUSE FOR REJECTION. REMOVE ALL BURRS AND SHARP EDGES

UNLESS OTHERWISE SPECIFIED
DIMENSIONS ARE IN INCHES AND INCLUDE
CHEMICALLY APPLIED OR PLATED FINISHES

DECIMALS	FRACTIONS
.X ± .05	± 1/64
.XX ± .01	ANGLES
.XXX ± .005	± 0° 30'

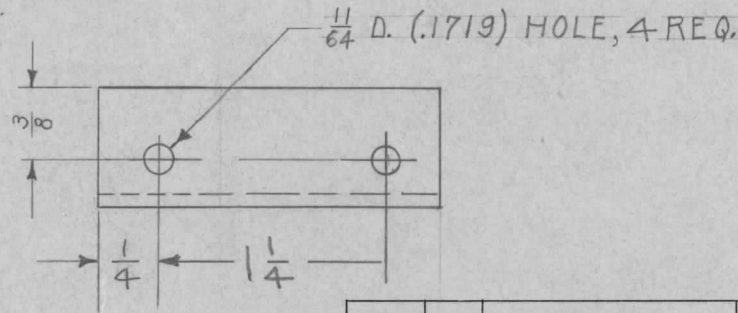
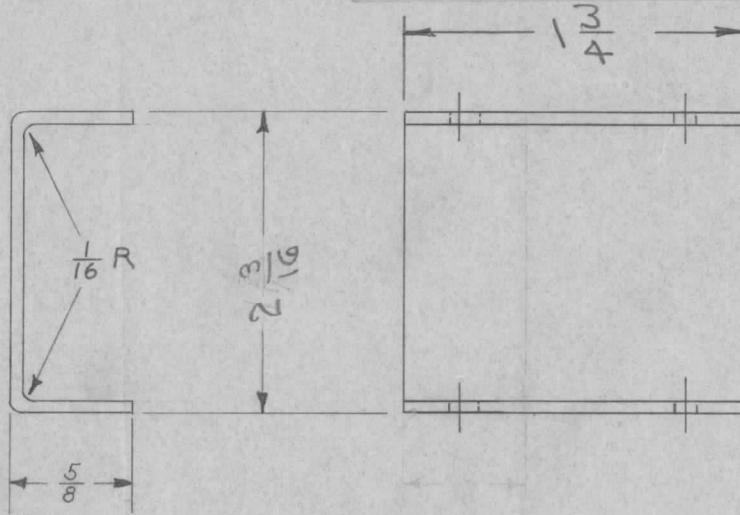
TOLERANCES

CUT HERE
GUARANTEED
2-66

MS-112 B

USED ON

MODEL	PROJECT NO.	ASS'Y. NO.	DATE
BAC-2-S-20	100	A-115	7-28-52
BAC-2	157	A-192	10-17-52
BAC-2-S-1.5	230	A-192	9-16-53



REQ.	ITEM	PART NO.	DESCRIPTION	SYMBOL
		.064	THE TECHNICAL MATERIEL CORP. MAMARONECK, NEW YORK	BRACKET
		ALUMINUM		
		52S-H32		
		F.M. 7-31-53		
		HEAT TREAT. SPEC.		
		S404 IRIDITE		
		FINISH & SPEC. NO.		

B	1	S404 - IRIDITE WAS S101 - CAUSTIC DIP	12-7 59	1001	P		EMN
A	1	COMPLETELY REVISED	10/20/54	1	JALB	CSB	AMB
—	—	REDRAWN - NO CHANGE	7/31/53	—	F.M.		PPB

ISSUE	ITEM	CHANGED FROM	DATE	CN. NO.	DRAFTS	CHECKER	ENG. APP.
TOLERANCES			SCALE				
ALL OTHERS	DEC. DIM. ±	FRAC. DIM. ±	DRILL, PUNCH, COMMERCIAL STOCK SIZES AND MANUFACTURERS TOLERANCES ARE NOT INCLUDED.				
	ANGULAR DIM. ±						

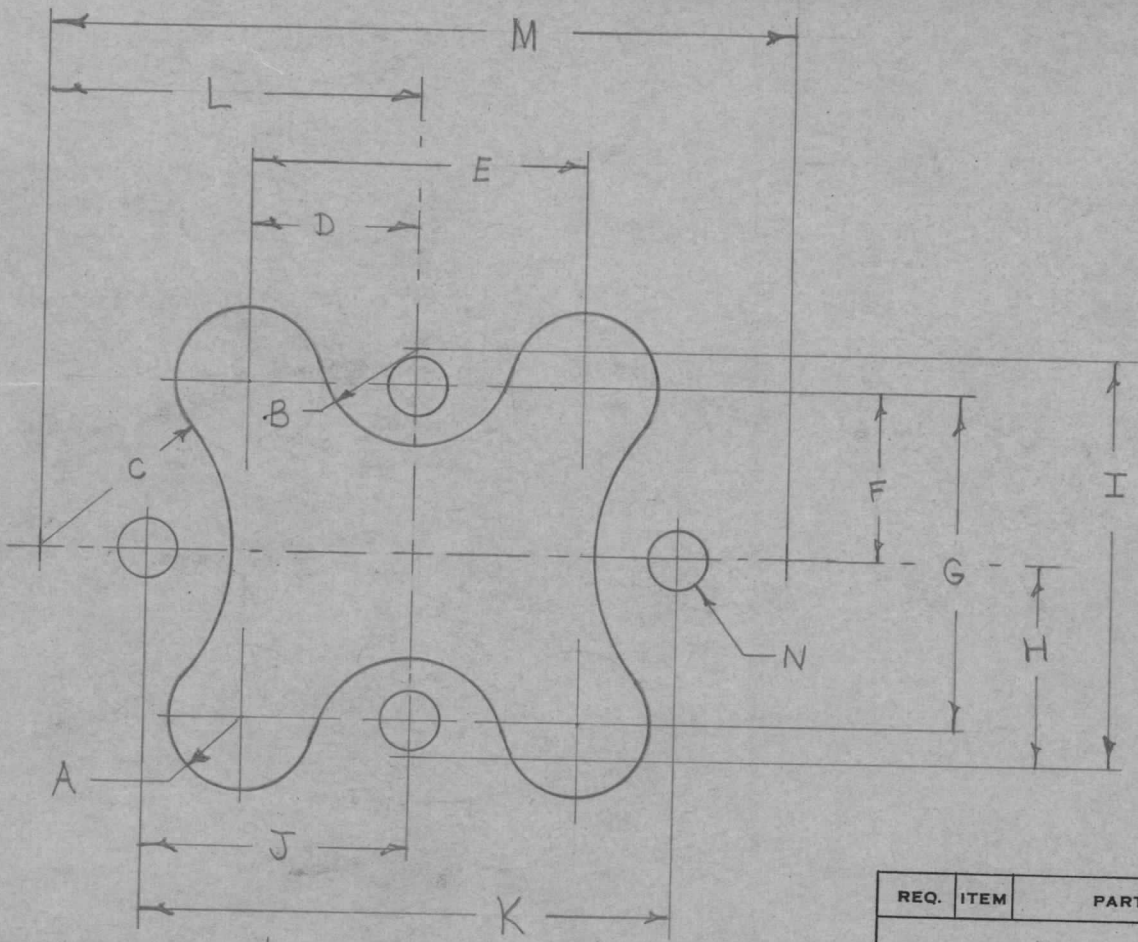
IF IT IS FOUND DESIRABLE TO CHANGE ANY TOLERANCE OR OTHER DETAIL SPECIFIED ON THIS DRAWING NOTIFY THE PURCHASER PROMPTLY.

MAXIMUM ALLOWABLE TOLERANCES HAVE BEEN DETERMINED AND DEVIATIONS WILL BE CAUSE FOR REJECTION. REMOVE ALL BURRS AND SHARP EDGES

MS-119 ϕ

USED ON

MODEL	PROJECT NO.	ASS'Y. NO.	DATE
FFR	104		8-15-52



- A = .187 RADIUS
- B = .250 RADIUS
- C = .500 RADIUS
- D = .437
- E = .875
- F = .437
- G = .875
- H = .531
- I = 1.062
- J = .687
- K = 1.375
- L = .968
- M = 1.937
- N = $\frac{5}{32}$ D. (.156) 4 HOLES

NOTE: PUNCH & DIE TO BE USED ON .064 GA. 52S-H32 ALUMINUM.

REQ.	ITEM	PART NO.	DESCRIPTION	SYMBOL
			THE TECHNICAL MATERIEL CORP.	
			MAMARONECK, NEW YORK	
			CHASSIS CUTOUT,	
			PUNCH & DIE	
			WDC 8-15-52	
			DRAWN	
			ELEC. DES. APP.	
			CHECKED	
			MECH. DES. APP.	
			FINAL APPROVAL	
			MS-119 ϕ	

<input checked="" type="checkbox"/>	ORIGINAL RELEASE	9/26/69	Q				
ISSUE	ITEM	CHANGED FROM	DATE	CN. NO.	DRAFTS	CHECKER	ENG. APP.
TOLERANCES		SCALE 1" = 2"					
ALL OTHERS	DEC. DIM. \pm .005	DRILL, PUNCH, COMMERCIAL STOCK SIZES AND MANUFACTURERS TOLERANCES ARE NOT INCLUDED.					
	FRAC. DIM. \pm						
	ANGULAR DIM. \pm						

IF IT IS FOUND DESIRABLE TO CHANGE ANY TOLERANCE OR OTHER DETAIL SPECIFIED ON THIS DRAWING NOTIFY THE PURCHASER PROMPTLY.

MS-120

MAXIMUM ALLOWABLE TOLERANCES HAVE BEEN DETERMINED AND DEVIATIONS WILL BE CAUSE FOR REJECTION. REMOVE ALL BURRS AND SHARP EDGES

REQ. PER UNIT

USED ON

MODEL

PROJECT NO.

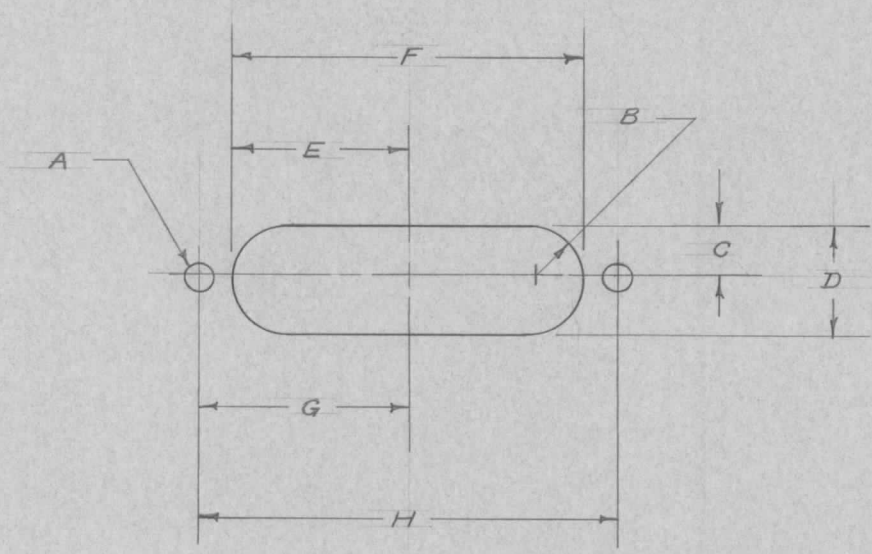
ASS'Y. NO.

DATE

FFR

104

8-15-55



A - $\frac{5}{32}$ (.156) D. 2 HOLES
 B - .272 R.
 C - .272
 D - .544
 E - .850
 F - 1.700
 G - 1.062
 H - 2.125

NOTE:

PUNCH & DIE TO BE USED FOR .064 GA. 52S-H32 ALUM.

UNLESS OTHERWISE SPECIFIED DIMENSIONS ARE IN INCHES AND INCLUDE CHEMICALLY APPLIED OR PLATED FINISHES

DECIMALS	FRACTIONS	TOLERANCES
.X ± .05	± 1/64	
.XX ± .01	ANGLES	
.XXX ± .005	± 0° 30'	

REQ.	ITEM	PART NO.	DESCRIPTION	SYMBOL
			THE TECHNICAL MATERIEL CORP.	
STOCK SIZE			MAMARONECK, NEW YORK	
			CHASSIS CUT OUT,	
MATERIAL			PUNCH & DIE	
WEIGHT PER PC.				
TYPE & TEMPER			AB 8-15-55	
HEAT TREAT. SPEC.			DRAWN	ELEC. DES. APP. MECH. DES. APP.
FINISH & SPEC. NO.			CHECKED	FINAL APPROVAL

+	+	REDRAWN NO CHANGE	8/15/55	#	16	JAL	
ISSUE	ITEM	CHANGED FROM	DATE	CN. NO.	DRAFTS	CHECKER	ENG. APP.

TOLERANCES		SCALE
ALL OTHERS	DEC. DIM. ± FRAC. DIM. ± ANGULAR DIM. ±	DRILL, PUNCH, COMMERCIAL STOCK SIZES AND MANUFACTURERS TOLERANCES ARE NOT INCLUDED.

MS-120

IF IT IS FOUND DESIRABLE TO CHANGE ANY TOLERANCE OR OTHER DETAIL SPECIFIED ON THIS DRAWING NOTIFY THE PURCHASER PROMPTLY.

MAXIMUM ALLOWABLE TOLERANCES HAVE BEEN DETERMINED AND DEVIATIONS WILL BE CAUSE FOR REJECTION. REMOVE ALL BURRS AND SHARP EDGES

UNLESS OTHERWISE SPECIFIED
DIMENSIONS ARE IN INCHES AND INCLUDE
CHEMICALLY APPLIED OR PLATED FINISHES

DECIMALS	FRACTIONS
.X ± .05	± 1/64
.XX ± .01	ANGLES
.XXX ± .005	± 0° 30'

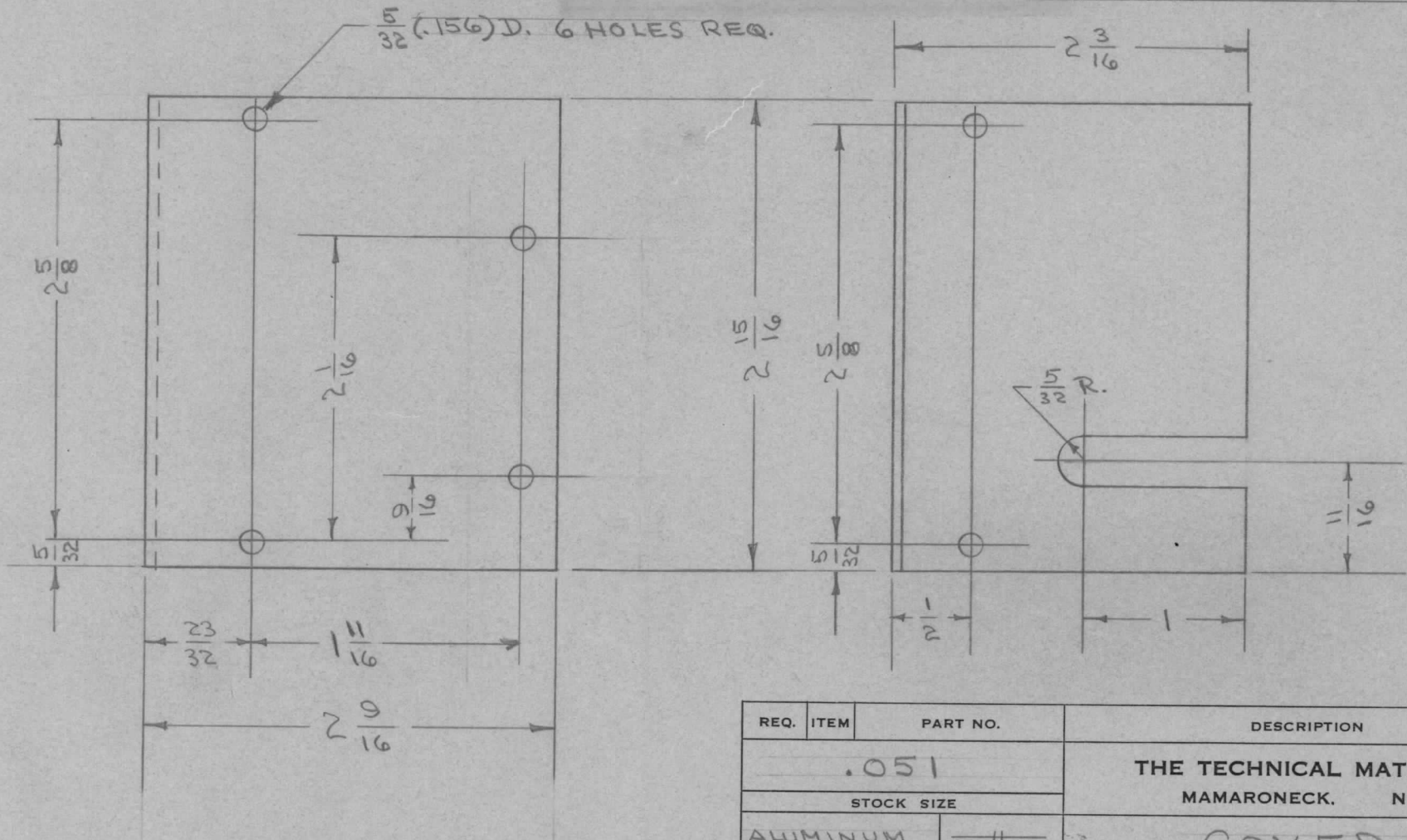
TOLERANCES

CUT HERE
QUANTITY 2-68

MS-123 A

USED ON

MODEL	PROJECT NO.	ASS'Y. NO.	DATE
DMK-4	140	A-154	9-20-52



REQ.	ITEM	PART NO.	DESCRIPTION	SYMBOL
		.051	THE TECHNICAL MATERIEL CORP. MAMARONECK, NEW YORK	
		STOCK SIZE		
		ALUMINUM	COVER	
		WEIGHT PER PC.		
		52S H 32		
		TYPE & TEMPER	C.D.D. 8-29-52	
		HEAT TREAT. SPEC.		
		FINISH & SPEC. NO.		

A	1	S404-IRIDITE WAS S101-CAUSTIC DIP	12-7 59	1001	P	EMN	
ISSUE	ITEM	CHANGED FROM	DATE	CN. NO.	DRAFTS	CHECKER	ENG. APP.
TOLERANCES		SCALE 1"					
ALL OTHERS	DEC. DIM. ± FRAC. DIM. ± 1/64 ANGULAR DIM. ±	DRILL, PUNCH, COMMERCIAL STOCK SIZES AND MANUFACTURERS TOLERANCES ARE NOT INCLUDED.					

DRAWN	ELEC. DES. APP.	MECH. DES. APP.
CHECKED	FINAL APPROVAL	
SUPERCEDES AMS 101	MS-123	A

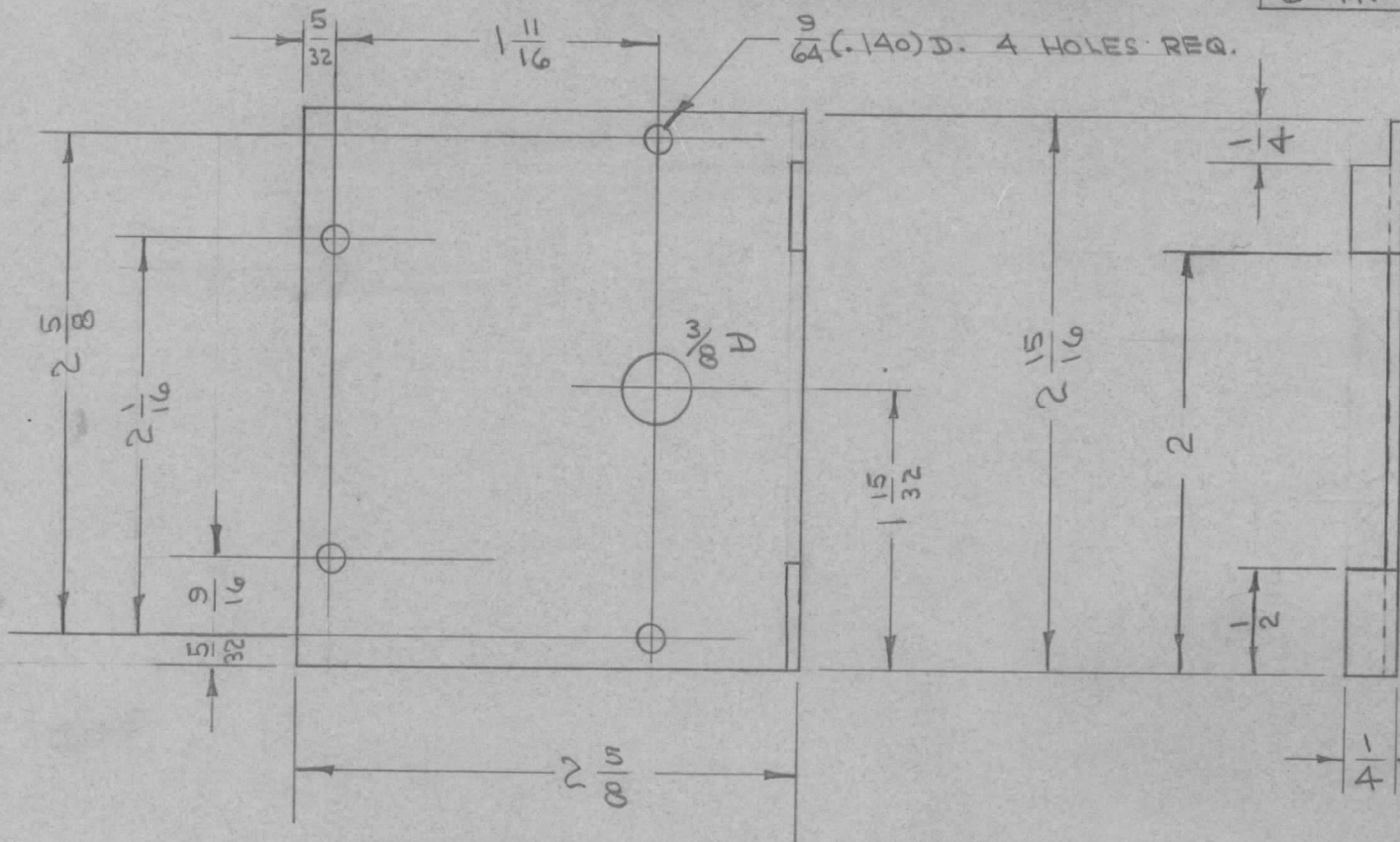
IF IT IS FOUND DESIRABLE TO CHANGE ANY TOLERANCE OR OTHER DETAIL SPECIFIED ON THIS DRAWING NOTIFY THE PURCHASER PROMPTLY.

MAXIMUM ALLOWABLE TOLERANCES HAVE BEEN DETERMINED AND DEVIATIONS WILL BE CAUSE FOR REJECTION. REMOVE ALL BURRS AND SHARP EDGES

MS-124 B

USED ON

MODEL	PROJECT NO.	ASS'Y. NO.	DATE
DMK-4	140	A-154	9-20-52



UNLESS OTHERWISE SPECIFIED DIMENSIONS ARE IN INCHES AND INCLUDE CHEMICALLY APPLIED OR PLATED FINISHES

DECIMALS	FRACTIONS
.X ± .05	± 1/64
.XX ± .01	ANGLES ± 0° 30'
.XXX ± .005	

TOLERANCES

REQ.	ITEM	PART NO.	DESCRIPTION	SYMBOL
		.051	THE TECHNICAL MATERIEL CORP.	
		STOCK SIZE	MAMARONECK, NEW YORK	
		ALUMINUM	BOTTOM	
		MATERIAL		
		WEIGHT PER PC.		
		52S H32		
		TYPE & TEMPER	C.D.D. 8-29-52	
			DRAWN	ELEC. DES. APP.
			7.H.C.	
		HEAT TREAT. SPEC.	CHECKED	FINAL APPROVAL
		S404-IRIDITE		
		FINISH & SPEC. NO.	MS-124	B

B	1	S404 IRIDITE WAS 5101 CAUSTIC DIP	12-7 59	1001	P		EMN
A	1	NOTCHS REMOVED	7/24/53	1	JAG	P978	P978
ISSUE	ITEM	CHANGED FROM	DATE	CN. NO.	DRAFTS	CHECKER	ENG. APP.

TOLERANCES		SCALE	DRILL, PUNCH, COMMERCIAL STOCK SIZES AND MANUFACTURERS TOLERANCES ARE NOT INCLUDED.
ALL OTHERS	DEC. DIM. ± FRAC. DIM. ± 1/64 ANGULAR DIM. ±		

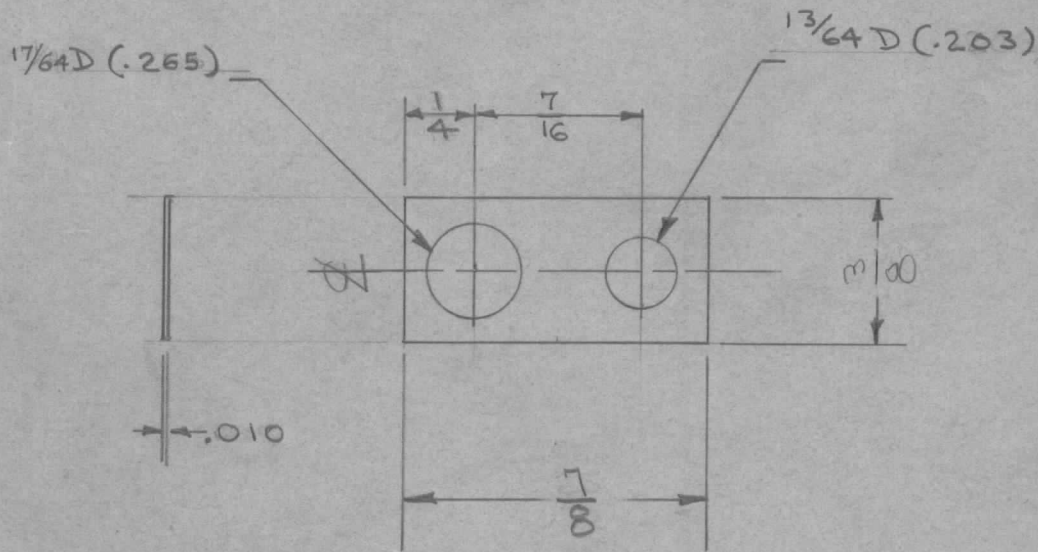
IF IT IS FOUND DESIRABLE TO CHANGE ANY TOLERANCE OR OTHER DETAIL SPECIFIED ON THIS DRAWING NOTIFY THE PURCHASER PROMPTLY.

RELEASED

MS-132 c

MAXIMUM ALLOWABLE TOLERANCES HAVE BEEN DETERMINED AND DEVIATIONS WILL BE CAUSE FOR REJECTION. REMOVE ALL BURRS AND SHARP EDGES

REQ. PER UNIT	USED ON			
	MODEL	PROJECT NO.	ASS'Y. NO.	DATE
	FFR	104	A-131	9-9-52
	FFR	104	A-162	9-30-52
	LFA	109	A-208	10-24-52
6	GPR			6-17-55
2	FFRD-1,2,3	E-458-P		4/16/56
	MSR		A-1495 A-2007	10/3/61



UNLESS OTHERWISE SPECIFIED DIMENSIONS ARE IN INCHES AND INCLUDE CHEMICALLY APPLIED OR PLATED FINISHES

DECIMALS	TOLERANCES	FRACTIONS
.X ± .05		± 1/64
.XX ± .01		ANGLES
.XXX ± .005		± 0° 30'

CUT HERE GUARANTEED 2-56

C	1	3/8 WAS 17/16	8/14/56	3	CDS	JAL	WJ
B	1	17/64 D. WAS 1/4 D.	2/8/55	2	FB	JAL	WJ
A	1	THICKNESS WAS .005	6/22/53	1	C.D.D.	JAL	WJ
ISSUE	ITEM	CHANGED FROM	DATE	CN. NO.	DRAFTS	CHECKER	ENG. APP.

REQ.	ITEM	PART NO.	DESCRIPTION	SYMBOL
		.010	THE TECHNICAL MATERIEL CORP. MAMARONECK, NEW YORK	
		PHOSPHOR BRONZE	GROUNDING STRAP	
		MATERIAL	IF CORE	
		WEIGHT PER PC.	AD. 9-9-52 G.T.O	
		TYPE & TEMPER	DRAWN	ELEC. DES. APP. MECH. DES. APP.
		HEAT TREAT. SPEC.	CHECKED	FINAL APPROVAL
		5-105 CADMIUM PLATE .0002		
		FINISH & SPEC. NO.		

TOLERANCES		SCALE
ALL OTHERS	DEC. DIM. ± FRAC. DIM. ± ANGULAR DIM. ±	DRILL, PUNCH, COMMERCIAL STOCK SIZES AND MANUFACTURERS TOLERANCES ARE NOT INCLUDED.

MS-132 c

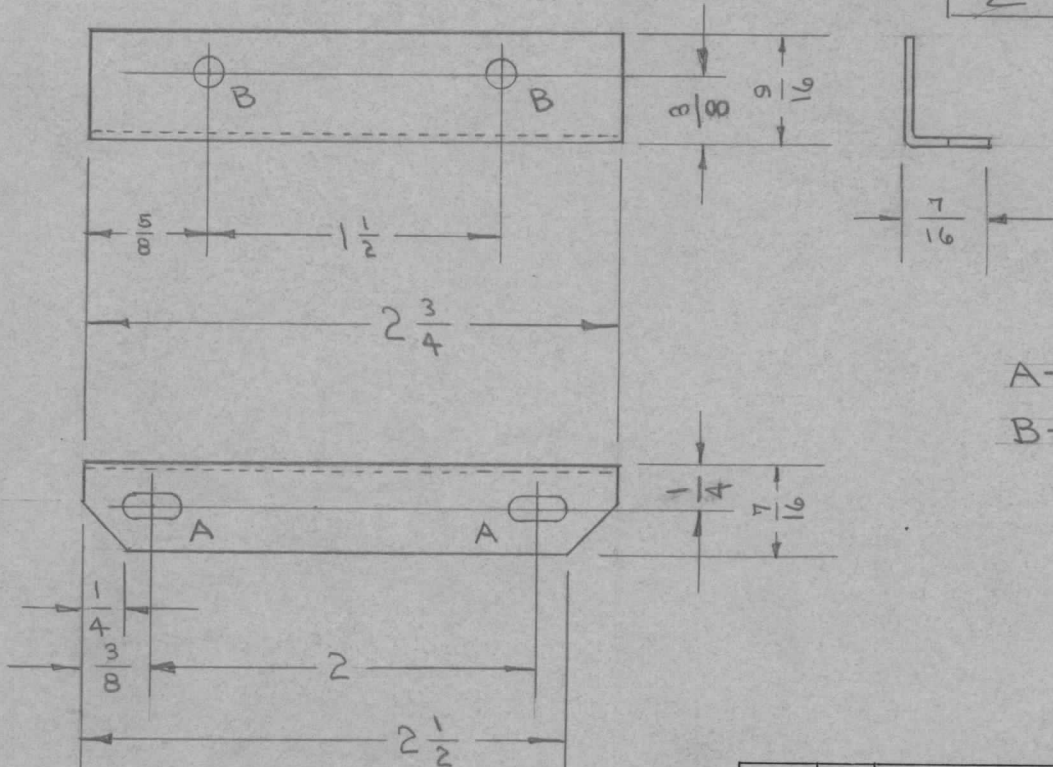
IF IT IS FOUND DESIRABLE TO CHANGE ANY TOLERANCE OR OTHER DETAIL SPECIFIED ON THIS DRAWING NOTIFY THE PURCHASER PROMPTLY.

RELEASED

MS-136 B

MAXIMUM ALLOWABLE TOLERANCES HAVE BEEN DETERMINED AND DEVIATIONS WILL BE CAUSE FOR REJECTION. REMOVE ALL BURRS AND SHARP EDGES

REQ. PER UNIT	USED ON			
	MODEL	PROJECT NO.	ASS'Y. NO.	DATE
2	LFA	109	A-147	10-21-57
2	XFK		A-600	
2	775-3			9-21-60



A-9/64 X 9/32 SLOT. 2 REQUIRED
 B-11/64 (.171) D. 2 HOLES REQUIRED

UNLESS OTHERWISE SPECIFIED
 DIMENSIONS ARE IN INCHES AND INCLUDE
 CHEMICALLY APPLIED OR PLATED FINISHES

DECIMALS	FRACTIONS
.X ± .05	± 1/64
.XX ± .01	ANGLES
.XXX ± .005	± 0° 30'

TOLERANCES

CUT HERE
 GUARANTEED
 2-56

REQ.	ITEM	PART NO.	DESCRIPTION	SYMBOL					
		1051	THE TECHNICAL MATERIEL CORP. MAMARONECK, NEW YORK						
		ALUMINUM	BRACKET, XTAL OVEN						
B	1	S404-IRIDITE WAS S101-CAUSTIC DIP							
A	1	WAS 4 REQ ON XFK							
ISSUE	ITEM	CHANGED FROM	DATE	CN. NO.	DRAFTS	CHECKER	ENG. APP.		
			12-7 59	1001	P		EMN		
			4/2/53	1	P/S.	JAC	WC		
								C.D.D. 9-11-57	A.J.J.
								WOC 10/20	
								CHECKED	FINAL APPROVAL
								SUPERCEDES AMS-113	MS-136 B

TOLERANCES		SCALE	DRILL, PUNCH, COMMERCIAL STOCK SIZES AND MANUFACTURERS TOLERANCES ARE NOT INCLUDED.			
ALL OTHERS	DEC. DIM. ± FRAC. DIM. ± ANGULAR DIM. ±	FULL.				
	1/64					

IF IT IS FOUND DESIRABLE TO CHANGE ANY TOLERANCE OR OTHER DETAIL SPECIFIED ON THIS DRAWING NOTIFY THE PURCHASER PROMPTLY.

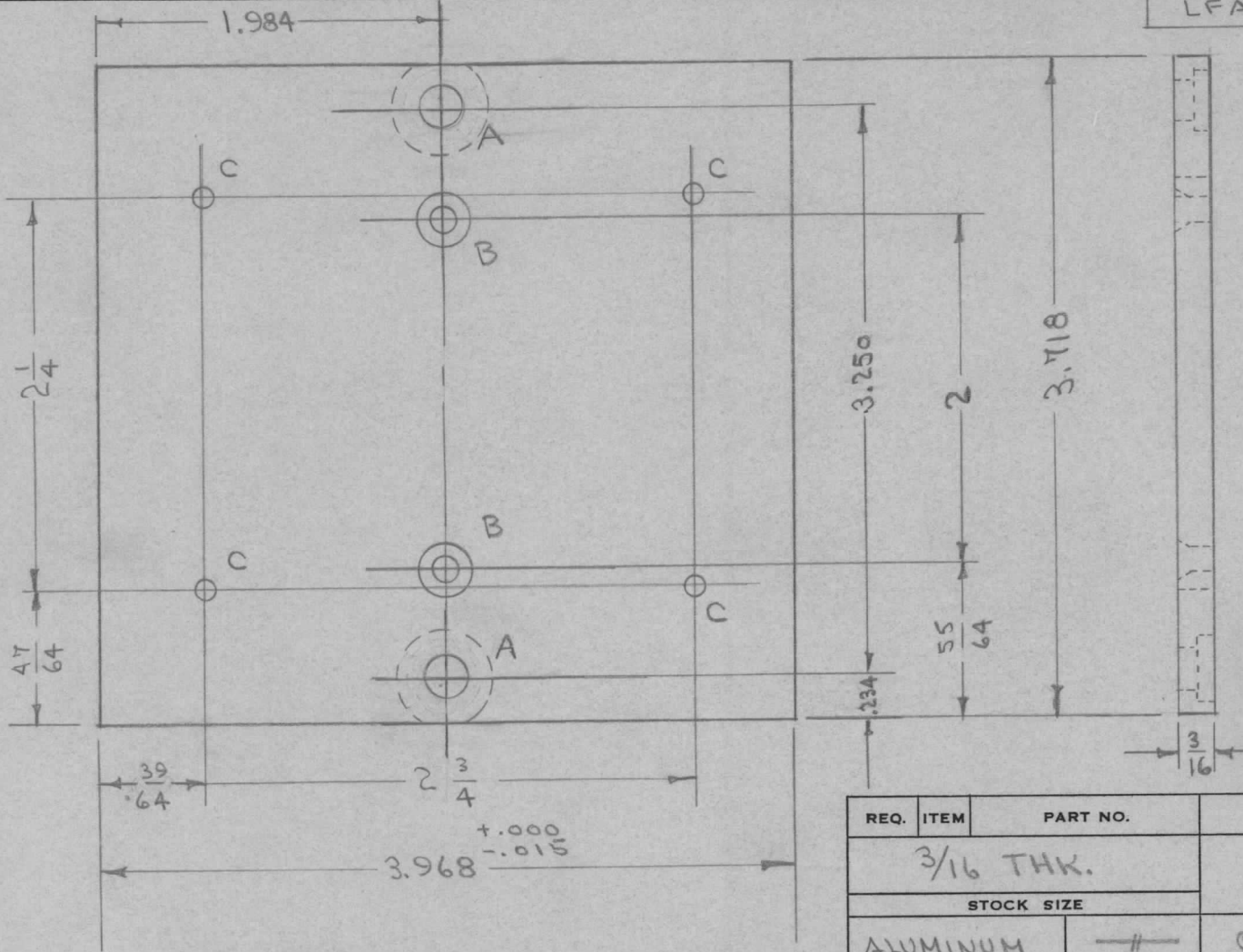
RELEASED

MS-137 A

MAXIMUM ALLOWABLE TOLERANCES HAVE BEEN DETERMINED AND DEVIATIONS WILL BE CAUSE FOR REJECTION. REMOVE ALL BURRS AND SHARP EDGES

USED ON

MODEL	PROJECT NO.	ASS'Y. NO.	DATE
LFA	109	A-138	9-11-57



A - 1/4 D. (.250). THEN C' BORE FROM REAR 1/2 X .030 DEEP.
 B - 1/64 (.172) DRILL. THEN C' SINK AT 82° X .103 DEEP FOR 6-32 FLAT HEAD SCREW.
 C - NO. 38 (.101) DRILL

ALL EDGES TO BE FINISHED SMOOTH + SQUARE.

NOTE - FINISH -
 S-404 IRIDITE O.P.
 S-114 ZINC CHROMATE PRIMER
 S-115 SMOOTH GREY ENAMEL

REQ.	ITEM	PART NO.	DESCRIPTION	SYMBOL
		3/16 THK.	THE TECHNICAL MATERIEL CORP.	
		STOCK SIZE	MAMARONECK, NEW YORK	
	ALUMINUM	#	OVEN COVER, FRONT PANEL	
	MATERIAL	WEIGHT PER PC.		
		52S - H22		
		TYPE & TEMPER	O.D.O. 9-11-57	
		#	DRAWN	ELEC. DES. APP.
			WDC 10-21	MECH. DES. APP.
		HEAT TREAT. SPEC.	CHECKED	FINAL APPROVAL
		SEE NOTE		
		FINISH & SPEC. NO.		

A	1	S404 IRIDITE WAS S101 CAUSTIC DIP	12-7-59	1001	P	EMN
---	---	-----------------------------------	---------	------	---	-----

ISSUE	ITEM	CHANGED FROM	DATE	CN. NO.	DRAFTS	CHECKER	ENG. APP.
-------	------	--------------	------	---------	--------	---------	-----------

TOLERANCES			SCALE FULL				
------------	--	--	------------	--	--	--	--

ALL OTHERS	DEC. DIM. ± .005 FRAC. DIM. ± 1/64 ANGULAR DIM. ±	DRILL, PUNCH, COMMERCIAL STOCK SIZES AND MANUFACTURERS TOLERANCES ARE NOT INCLUDED.
------------	---	---

MS-137 A

IF IT IS FOUND DESIRABLE TO CHANGE ANY TOLERANCE OR OTHER DETAIL SPECIFIED ON THIS DRAWING NOTIFY THE PURCHASER PROMPTLY.

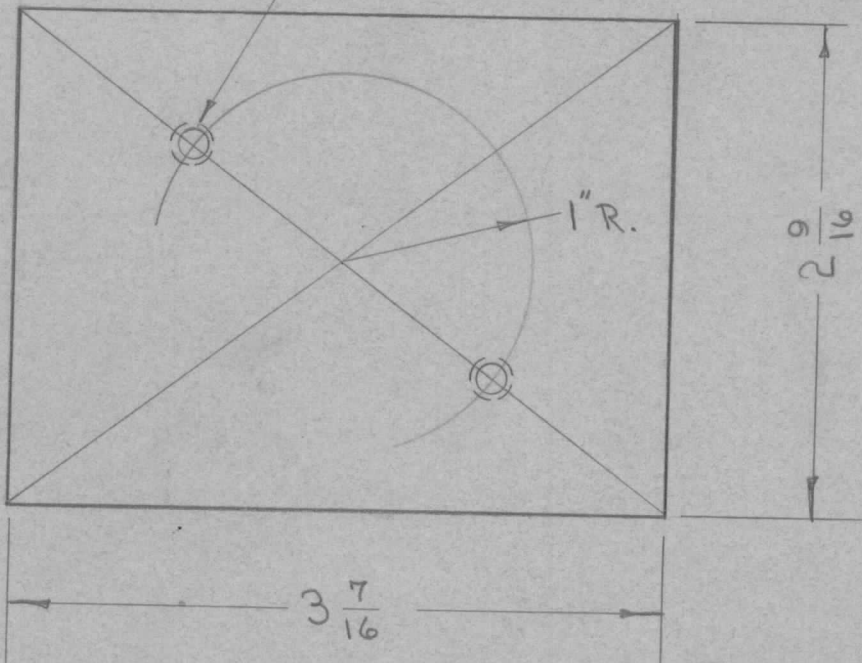
RELEASED

MS-138 B

MAXIMUM ALLOWABLE TOLERANCES HAVE BEEN DETERMINED AND DEVIATIONS WILL BE CAUSE FOR REJECTION. REMOVE ALL BURRS AND SHARP EDGES

AMT PER UNIT	MODEL	USED ON		
		PROJECT NO.	ASS'Y. NO.	DATE
	LFA	109	A-138	9-11-54
1	XFK		A-709	
1	GPE-1			6-7-61

8-32 TAP 2 REQ.



NOTE
RELATED HOLES WITH JWG IM-100 MUST BE DRILLED IN SAME SET UP.

UNLESS OTHERWISE SPECIFIED DIMENSIONS ARE IN INCHES AND INCLUDE CHEMICALLY APPLIED OR PLATED FINISHES

DECIMALS	FRACTIONS
.X ± .05	± 1/64
.XX ± .01	ANGLES ± 0° 30'
.XXX ± .005	

TOLERANCES

REF: DWG IM-100

REQ.	ITEM	PART NO.	DESCRIPTION	SYMBOL
		3/16" THK	THE TECHNICAL MATERIEL CORP. MAMARONECK, NEW YORK	
		STOCK SIZE		
		ALUMINUM	PLATE; XTAL OVEN DOOR	
		—H—		
		MATERIAL	C.O.D. 9-11-52	A. J. J.
		WEIGHT PER PC.		
		52S H22	DRAWN	ELEC. DES. APP.
		TYPE & TEMPER		
		—H—	WOC 10-21	MECH. DES. APP.
		HEAT TREAT. SPEC.		
		S404 IRIDITE	CHECKED	FINAL APPROVAL
		FINISH & SPEC. NO.	SUPERCEDES AMS-112	MS-138 B

ISSUE	ITEM	CHANGED FROM	DATE	CN. NO.	DRAFTS	CHECKER	ENG. APP.
B	1	S404 - IRIDITE WAS S101 - CAUSTIC PIP	12-7 59	1001	P		EMN
A	1	NOTE ADDED	7/22/54	1	JAG	C.B.D.	JAC

TOLERANCES		SCALE	FULL
ALL OTHERS	DEC. DIM. ± FRAC. DIM. ± 1/64 ANGULAR DIM. ±	DRILL, PUNCH, COMMERCIAL STOCK SIZES AND MANUFACTURERS TOLERANCES ARE NOT INCLUDED.	

CUT HERE
2-66

IF IT IS FOUND DESIRABLE TO CHANGE ANY TOLERANCE OR OTHER DETAIL SPECIFIED ON THIS DRAWING NOTIFY THE PURCHASER PROMPTLY.

MAXIMUM ALLOWABLE TOLERANCES HAVE BEEN DETERMINED AND DEVIATIONS WILL BE CAUSE FOR REJECTION. REMOVE ALL BURRS AND SHARP EDGES

UNLESS OTHERWISE SPECIFIED DIMENSIONS ARE IN INCHES AND INCLUDE CHEMICALLY APPLIED OR PLATED FINISHES

DECIMALS	FRACTIONS
.X ± .05	± 1/64
.XX ± .01	ANGLES
.XXX ± .005	± 0° 30'

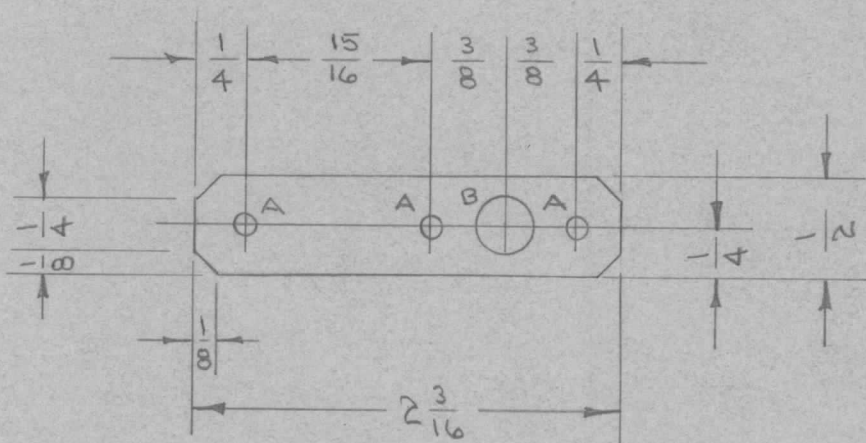
TOLERANCES

CUT HERE
GUARANTEED
2-66

MS-141 A

USED ON

MODEL	PROJECT NO.	ASS'Y. NO.	DATE
DMK-4	140	A-150	9-18-52



A - 9/64 (.140) D. 3 HOLES REQ.
B - 5/16 (.312) D. 1 HOLE REQ.

REQ.	ITEM	PART NO.	DESCRIPTION	SYMBOL
		.032	THE TECHNICAL MATERIEL CORP. MAMARONECK, NEW YORK	
		STOCK SIZE		
		ALUMINUM	ARM, COUPLING	
		MATERIAL		
		24S T3		
		TYPE & TEMPER	C.D.D. 9-18-52	
		HEAT TREAT. SPEC.	DRAWN	ELEC. DES. APP.
			71.8.C.	
			CHECKED	FINAL APPROVAL
		S404-IRIDITE	SUPERCEDES	MS-141
		FINISH & SPEC. NO.	AMS 103	A

ISSUE	ITEM	CHANGED FROM	DATE	CN. NO.	DRAFTS	CHECKER	ENG. APP.
A	1	6404 IRIDITE WAS S101 CAUSTIC DIP	12-7 59	1001	φ		EMN

TOLERANCES	SCALE	DRILL, PUNCH, COMMERCIAL STOCK SIZES AND MANUFACTURERS TOLERANCES ARE NOT INCLUDED.
DEC. DIM. ± FRAC. DIM. ± 1/64 ANGULAR DIM. ±	11	

IF IT IS FOUND DESIRABLE TO CHANGE ANY TOLERANCE OR OTHER DETAIL SPECIFIED ON THIS DRAWING NOTIFY THE PURCHASER PROMPTLY.

MAXIMUM ALLOWABLE TOLERANCES HAVE BEEN DETERMINED AND DEVIATIONS WILL BE CAUSE FOR REJECTION. REMOVE ALL BURRS AND SHARP EDGES

UNLESS OTHERWISE SPECIFIED DIMENSIONS ARE IN INCHES AND INCLUDE CHEMICALLY APPLIED OR PLATED FINISHES

DECIMALS	FRACTIONS
.X ± .05	± 1/64
.XX ± .01	ANGLES
.XXX ± .005	± 0° 30'

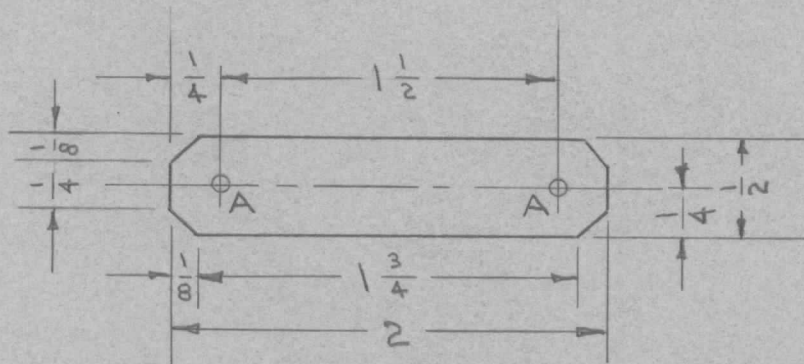
TOLERANCES

CUT HERE GUARANTEED 2.00

MS-142 A

USED ON

MODEL	PROJECT NO.	ASS'Y. NO.	DATE
DMK-4	140	A-150	9-18-57



A - 9/64 (.140) D. 2 REQ.

REQ.	ITEM	PART NO.	DESCRIPTION	SYMBOL
		.032	THE TECHNICAL MATERIEL CORP. MAMARONECK, NEW YORK	
		STOCK SIZE		
		ALUMINUM	ARM, COUPLING	
		MATERIAL		
		24 ST3		
		TYPE & TEMPER	C.D.D. 9-13-57	
		HEAT TREAT. SPEC.	DRAWN	ELEC. DES. APP.
		FINISH & SPEC. NO.	CHECKED	FINAL APPROVAL
		S404-IRIDITE	SUPERCEDES	
			AMS-103	MS-142 A

A	1	S404 IRIDITE WAS S101 CAUSTIC DIP	12-7 59	1001	JP	EMN.	
ISSUE	ITEM	CHANGED FROM	DATE	CN. NO.	DRAFTS	CHECKER	ENG. APP.
		TOLERANCES	SCALE FULL				
ALL OTHERS	DEC. DIM. ± FRAC. DIM. ± 1/64 ANGULAR DIM. ±		DRILL, PUNCH, COMMERCIAL STOCK SIZES AND MANUFACTURERS TOLERANCES ARE NOT INCLUDED.				

IF IT IS FOUND DESIRABLE TO CHANGE ANY TOLERANCE OR OTHER DETAIL SPECIFIED ON THIS DRAWING NOTIFY THE PURCHASER PROMPTLY.

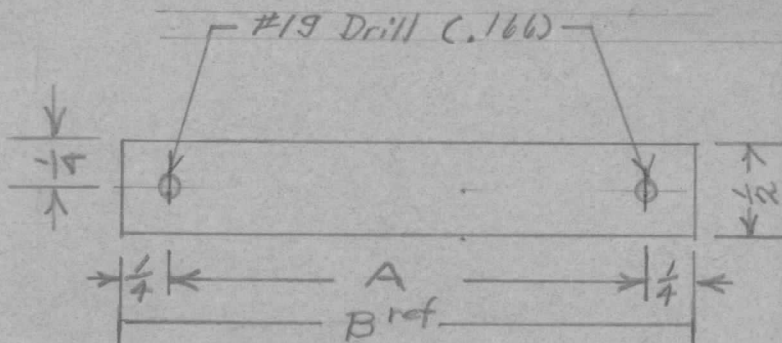
RELEASED

MS-144 E

MAXIMUM ALLOWABLE TOLERANCES HAVE BEEN DETERMINED AND DEVIATIONS WILL BE CAUSE FOR REJECTION. REMOVE ALL BURRS AND SHARP EDGES

USED ON

MODEL	PROJECT NO.	ASS'Y. NO.	DATE
RTB	158	A-172	10-7-52



TMC No	A	B
MS-144 -1	1 1/2"	2"
MS-144 -2	4 1/4"	4 3/4"
MS-144-3	4"	4 1/2"
MS-144-4	7/8"	1 3/8"
MS-144-5	2 1/8"	2 5/8"
MS-144-6	1-3/4"	2-1/4"
MS-144-7	3"	3 1/2"

UNLESS OTHERWISE SPECIFIED DIMENSIONS ARE IN INCHES AND INCLUDE CHEMICALLY APPLIED OR PLATED FINISHES

DECIMALS	FRACTIONS*	TOLERANCES	ANGLES
.X ± .05	± 1/64		
.XX ± .01	± 1/64		
.XXX ± .005	± 0° 30'		

CUT HERE GUARANTEED 2-66

REQ.	ITEM	PART NO.	DESCRIPTION	SYMBOL
			THE TECHNICAL MATERIEL CORP. MAMARONECK, NEW YORK	
E	1	MS-144-7 ADDED	.012 (#22) Sheet	
D	1	MS-144-6 ADDED TO CHART	STOCK SIZE	
C	1	MS-144-4 & MS-144-5 ADDED	Brass	
B	1	FINISH was (Cad S-105)	WEIGHT PER PC.	
A	1	ms-144-3 Added For RTB-3	Half Hard	
ISSUE	ITEM	CHANGED FROM	TYPE & TEMPER	
		DATE	HEAT TREAT. SPEC.	
		CN. NO.	FINISH & SPEC. NO.	
		DRAFTS	CHECKED	
		CHECKER	FINAL APPROVAL	
		ENG. APP.		
TOLERANCES		SCALE	MS-144 E	
ALL OTHERS	DEC. DIM. ± FRAC. DIM. ± ANGULAR DIM. ±	DRILL, PUNCH, COMMERCIAL STOCK SIZES AND MANUFACTURERS TOLERANCES ARE NOT INCLUDED.		

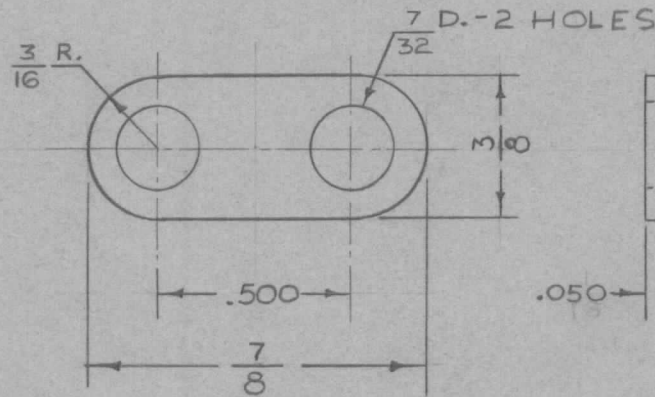
IF IT IS FOUND DESIRABLE TO CHANGE ANY TOLERANCE OR OTHER DETAIL SPECIFIED ON THIS DRAWING NOTIFY THE PURCHASER PROMPTLY.

RELEASED

MS-145 A

MAXIMUM ALLOWABLE TOLERANCES HAVE BEEN DETERMINED AND DEVIATIONS WILL BE CAUSE FOR REJECTION. REMOVE ALL BURRS AND SHARP EDGES

REQ. PER UNIT	USED ON			
	MODEL	PROJECT NO.	ASS'Y. NO.	DATE
2	FFR	104	A-226	10-1-52
4	FFR-DP		A-334	1-21-53
4	FFR-DPH	333	A-854	10-19-54
2	FFR-2			5-22-58



NOTICE TO PERSONS RECEIVING THIS DRAWING

THE TECHNICAL MATERIEL CORPORATION claims proprietary right in the material disclosed hereon. This drawing is issued in confidence for engineering information only and may not be reproduced or used to manufacture anything shown hereon without permission from THE TECHNICAL MATERIEL CORPORATION to the user. This drawing is loaned for mutual assistance and is subject to recall at any time.

Property of:

THE TECHNICAL MATERIEL CORPORATION
MAMARONECK, NEW YORK

REQ.	ITEM	PART NO.	DESCRIPTION	SYMBOL
		NO. 16 GAUGE - .050	THE TECHNICAL MATERIEL CORP. MAMARONECK, NEW YORK	
		STOCK SIZE		
		BRASS	LOCK LINK	
		MATERIAL		
		1/2 HARD		
		TYPE & TEMPER		
		HEAT TREAT. SPEC.		
		S-135 NICKEL PLATE		
		FINISH & SPEC. NO.		

A	1	FINISH # SPEC WAS S-105 BRIGHT CAD. PLATE	3-1-63	8325	SP	Jde	RB
ISSUE	ITEM	CHANGED FROM	DATE	CN. NO.	DRAFTS	CHECKER	ENG. APP.
TOLERANCES			SCALE 2" TO 1"				
ALL OTHERS	DEC. DIM. ± .005 FRAC. DIM. ± 1/64 ANGULAR DIM. ±		DRILL, PUNCH, COMMERCIAL STOCK SIZES AND MANUFACTURERS TOLERANCES ARE NOT INCLUDED.				

DRAWN: J.G. 9-30-52
 ELEC. DES. APP.: [Signature]
 MECH. DES. APP.: [Signature]
 CHECKED: WDC 10-10-52
 FINAL APPROVAL: MS-145 A

IF IT IS FOUND DESIRABLE TO CHANGE ANY TOLERANCE OR OTHER DETAIL SPECIFIED ON THIS DRAWING NOTIFY THE PURCHASER PROMPTLY.

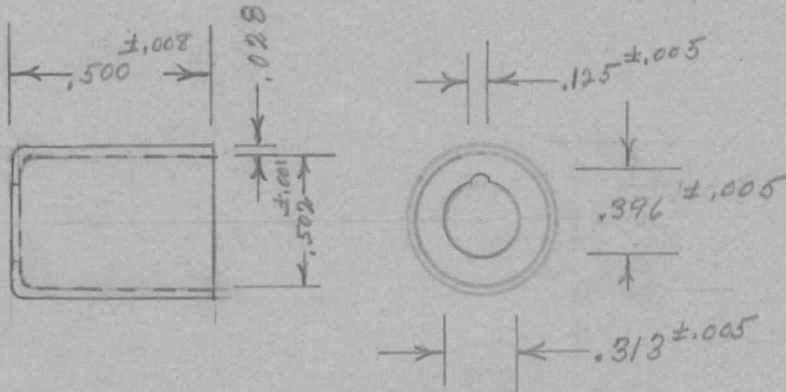
RELEASED

MS-146

MAXIMUM ALLOWABLE TOLERANCES HAVE BEEN DETERMINED AND DEVIATIONS WILL BE CAUSE FOR REJECTION. REMOVE ALL BURRS AND SHARP EDGES

USED ON

MODEL	PROJECT NO.	ASS'Y. NO.	DATE
RTB	158	A-169	10-7-52



UNLESS OTHERWISE SPECIFIED
DIMENSIONS ARE IN INCHES AND INCLUDE
CHEMICALLY APPLIED OR PLATED FINISHES

DECIMALS	FRACTIONS	TOLERANCES	ANGLES
.X ±.05	± 1/64		
.XX ±.01			± 0° 30'
.XXX ±.005			

CUT HERE
GUARANTEED
2-66

Ref: Ward Leonard Electric Co. Part #25211-1

REQ.	ITEM	PART NO.	DESCRIPTION	SYMBOL
		#21 GA. (.028)	THE TECHNICAL MATERIEL CORP. MAMARONECK, NEW YORK	
		STOCK SIZE		
		Soft Brass	FERRULE	
		MATERIAL WEIGHT PER PC.		
		— II —		
		TYPE & TEMPER		
		— II —		
		HEAT TREAT. SPEC.		
		FINISH & SPEC. NO.		

ISSUE	ITEM	CHANGED FROM	DATE	CN. NO.	DRAFTS	CHECKER	ENG. APP.

TOLERANCES	SCALE
ALL OTHERS DEC. DIM. ± FRAC. DIM. ± ANGULAR DIM. ±	DRILL, PUNCH, COMMERCIAL STOCK SIZES AND MANUFACTURERS TOLERANCES ARE NOT INCLUDED.

DRAWN: [Signature]
ELEC. DES. APP.: [Signature]
MECH. DES. APP.: [Signature]
CHECKED: LAR
FINAL APPROVAL: MS-146

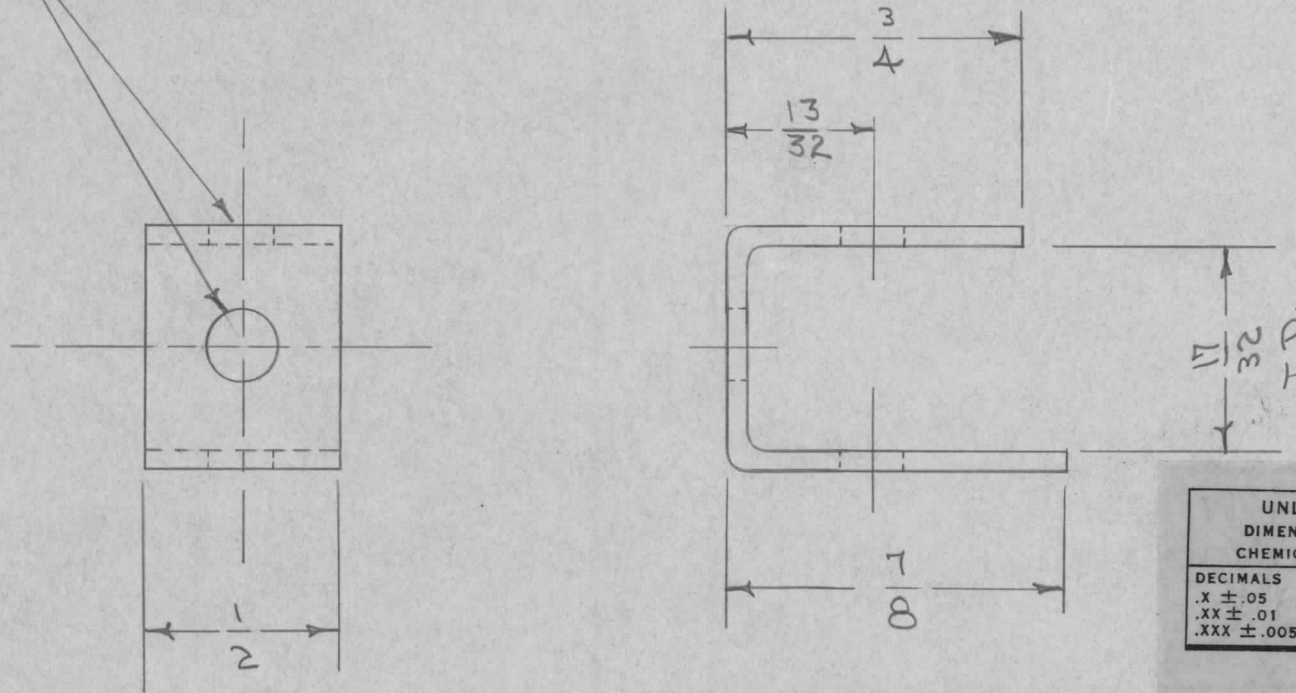
IF IT IS FOUND DESIRABLE TO CHANGE ANY TOLERANCE OR OTHER DETAIL SPECIFIED ON THIS DRAWING NOTIFY THE PURCHASER PROMPTLY.

MS-147 A

MAXIMUM ALLOWABLE TOLERANCES HAVE BEEN DETERMINED AND DEVIATIONS WILL BE CAUSE FOR REJECTION. REMOVE ALL BURRS AND SHARP EDGES

REQ. PER UNIT	USED ON			
	MODEL	PROJECT NO.	ASS'Y. NO.	DATE
12	RTB	158	A-169	7-29-54

1/64 (.171) D. - 3 REQ.



UNLESS OTHERWISE SPECIFIED DIMENSIONS ARE IN INCHES AND INCLUDE CHEMICALLY APPLIED OR PLATED FINISHES

DECIMALS	TOLERANCES	FRACTIONS
.X ± .05		± 1/64
.XX ± .01		ANGLES ± 0° 30'
.XXX ± .005		

CUT HERE GUARANTEED 2-66

REQ.	ITEM	PART NO.	DESCRIPTION	SYMBOL
		?? GA. (.045)	THE TECHNICAL MATERIEL CORP.	
		STOCK SIZE	MAMARONECK. NEW YORK	
		COPPER	FERRULE, MOUNTING	
		MATERIAL	RTB	
		WEIGHT PER PC.		
		COMMERCIAL HARD		
		TYPE & TEMPER	C.I.D.D. 7-29-54	
			DRAWN	ELEC. DES. APP.
			MECH. DES. APP.	
			HEAT TREAT. SPEC.	
		S-105 CADMIUM PLATE	CHECKED	FINAL APPROVAL
		FINISH & SPEC. NO.		

ISSUE	ITEM	CHANGED FROM	DATE	CN. NO.	DRAFTS	CHECKER	ENG. APP.
A	1	REDRAWN - DIM. CHGD.	7/29/54	1	C.D.D.	FADE	WJZ

TOLERANCES		SCALE
ALL OTHERS	DEC. DIM. ± FRAC. DIM. ± ANGULAR DIM. ±	DRILL, PUNCH, COMMERCIAL STOCK SIZES AND MANUFACTURERS TOLERANCES ARE NOT INCLUDED.

MS-147 A

IF IT IS FOUND DESIRABLE TO CHANGE ANY TOLERANCE OR OTHER DETAIL SPECIFIED ON THIS DRAWING NOTIFY THE PURCHASER PROMPTLY.

MAXIMUM ALLOWABLE TOLERANCES HAVE BEEN DETERMINED AND DEVIATIONS WILL BE CAUSE FOR REJECTION. REMOVE ALL BURRS AND SHARP EDGES

UNLESS OTHERWISE SPECIFIED
DIMENSIONS ARE IN INCHES AND INCLUDE
CHEMICALLY APPLIED OR PLATED FINISHES

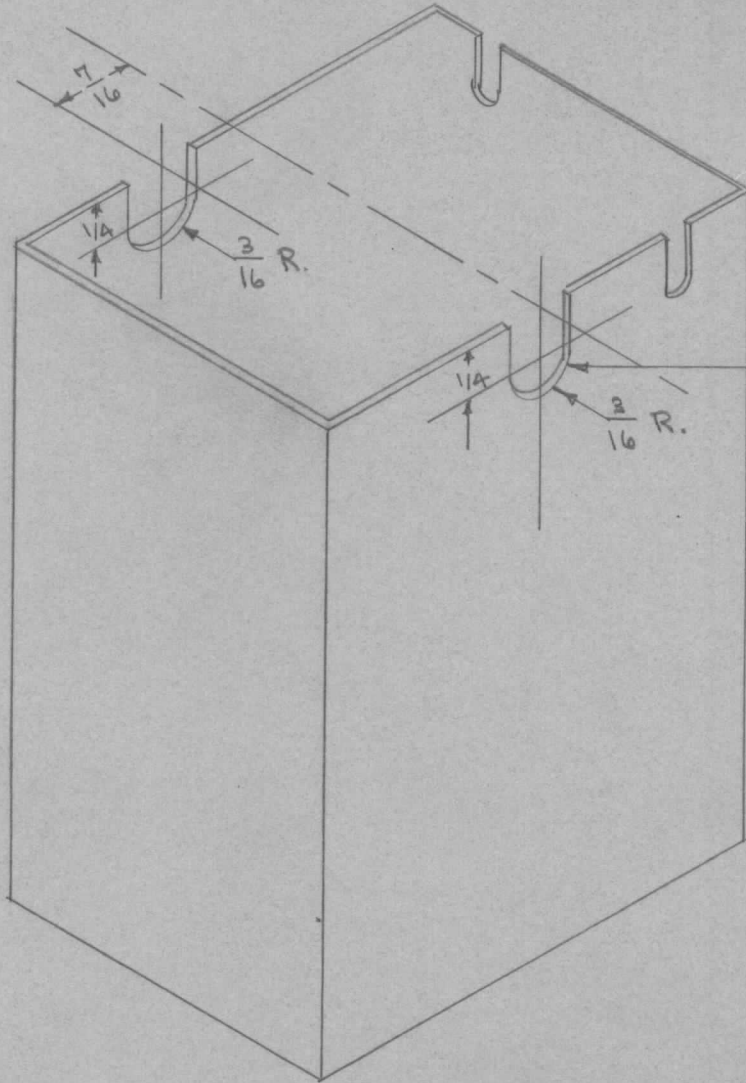
DECIMALS	TOLERANCES	FRACTIONS
.X ± .05		± 1/64
.XX ± .01		ANGLES
.XXX ± .005		± 0° 30'

CUT HERE
GUARANTEED
12-66

MS-151

USED ON

MODEL	PROJECT NO.	ASS'Y. NO.	DATE
DMK4	140	A-155	90-6-52



ENLARGE PRESENT HOLE TO
NEW DIMENSIONS AS SHOWN

USE EXISTING HAMMARLUND CAN

REQ.	ITEM	PART NO.	DESCRIPTION	SYMBOL
	//		THE TECHNICAL MATERIEL CORP. MAMARONECK, NEW YORK	
		STOCK SIZE		
	//	//	MODIFICATION	
		MATERIAL	3.5 SHIELD CAN.	
		WEIGHT PER PC.		
		TYPE & TEMPER	C.I.D. 10-6-57	
		HEAT TREAT. SPEC.	DRAWN	ELEC. DES. APP. MECH. DES. APP.
		FINISH & SPEC. NO.	CHECKED	FINAL APPROVAL
			SUPERCEDES AMS-099	MS-151

ISSUE	ITEM	CHANGED FROM	DATE	CN. NO.	DRAFTS	CHECKER	ENG. APP.
TOLERANCES			SCALE //				
ALL OTHERS	DEC. DIM. ± FRAC. DIM. ± ANGULAR DIM. ±	DRILL, PUNCH, COMMERCIAL STOCK SIZES AND MANUFACTURERS TOLERANCES ARE NOT INCLUDED.					

IF IT IS FOUND DESIRABLE TO CHANGE ANY TOLERANCE OR OTHER DETAIL SPECIFIED ON THIS DRAWING NOTIFY THE PURCHASER PROMPTLY.

RELEASED

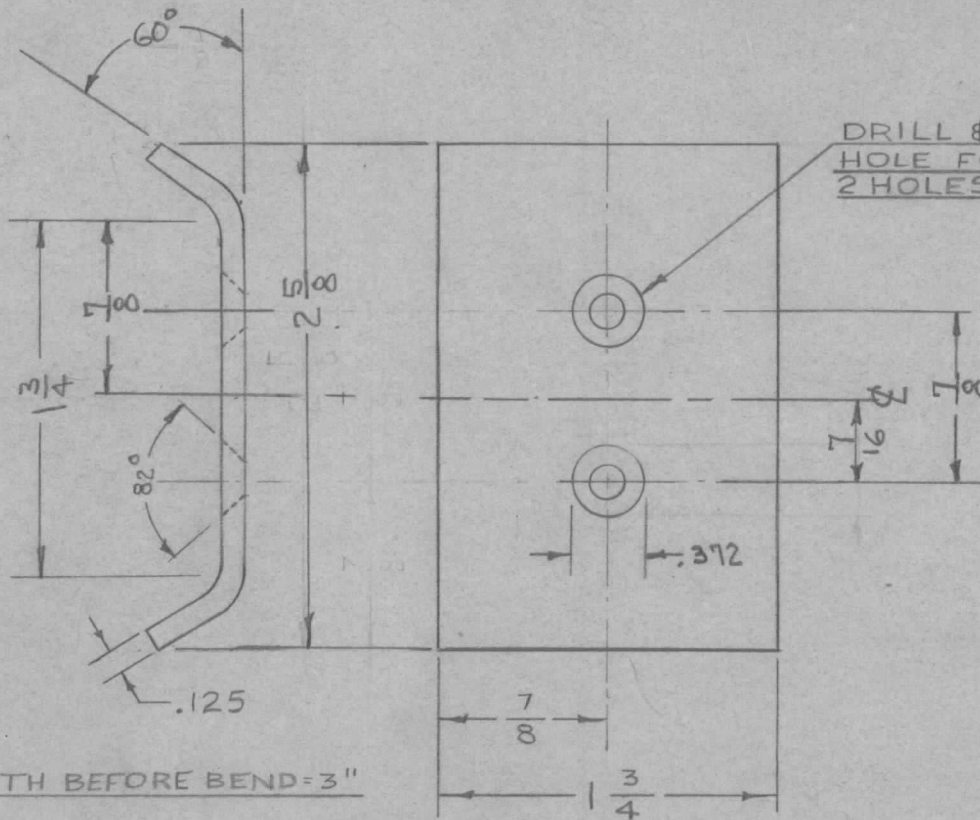
MS-152

A

MAXIMUM ALLOWABLE TOLERANCES HAVE BEEN DETERMINED AND DEVIATIONS WILL BE CAUSE FOR REJECTION. REMOVE ALL BURRS AND SHARP EDGES

USED ON

MODEL	PROJECT NO.	ASS'Y. NO.	DATE
	141	A-187	10-8-52



LENGTH BEFORE BEND = 3"

UNLESS OTHERWISE SPECIFIED DIMENSIONS ARE IN INCHES AND INCLUDE CHEMICALLY APPLIED OR PLATED FINISHES

DECIMALS	FRACTIONS
.X ± .05	± 1/64
.XX ± .01	ANGLES
.XXX ± .005	± 0° 30'

TOLERANCES

CUT HERE GUARANTEED 2-66

REQ.	ITEM	PART NO.	DESCRIPTION	SYMBOL
		1/8" x 1 3/4" RECT. BAR	THE TECHNICAL MATERIEL CORP. MAMARONECK, NEW YORK	
		STOCK SIZE		
		BRASS	PLATE, FULCRUM	
		MATERIAL		
		WEIGHT PER PC.		
		HALF HARD		
		TYPE & TEMPER		
			DRAWN	ELEC. DES. APP.
			CHECKED	FINAL APPROVAL
		SILVER PLATE .001"		
		FINISH & SPEC. NO.		

ISSUE	ITEM	CHANGED FROM	DATE	CN. NO.	DRAFTS	CHECKER	ENG. APP.
A	1	GENERAL REVISION	12/19/52	1	JAD		#

TOLERANCES

SCALE FULL SIZE

DRILL, PUNCH, COMMERCIAL STOCK SIZES AND MANUFACTURERS TOLERANCES ARE NOT INCLUDED.

ALL OTHERS

DEC. DIM. ±
FRAC. DIM. ±
ANGULAR DIM. ±

MS-152 A

IF IT IS FOUND DESIRABLE TO CHANGE ANY TOLERANCE OR OTHER DETAIL SPECIFIED ON THIS DRAWING NOTIFY THE PURCHASER PROMPTLY.

RELEASED

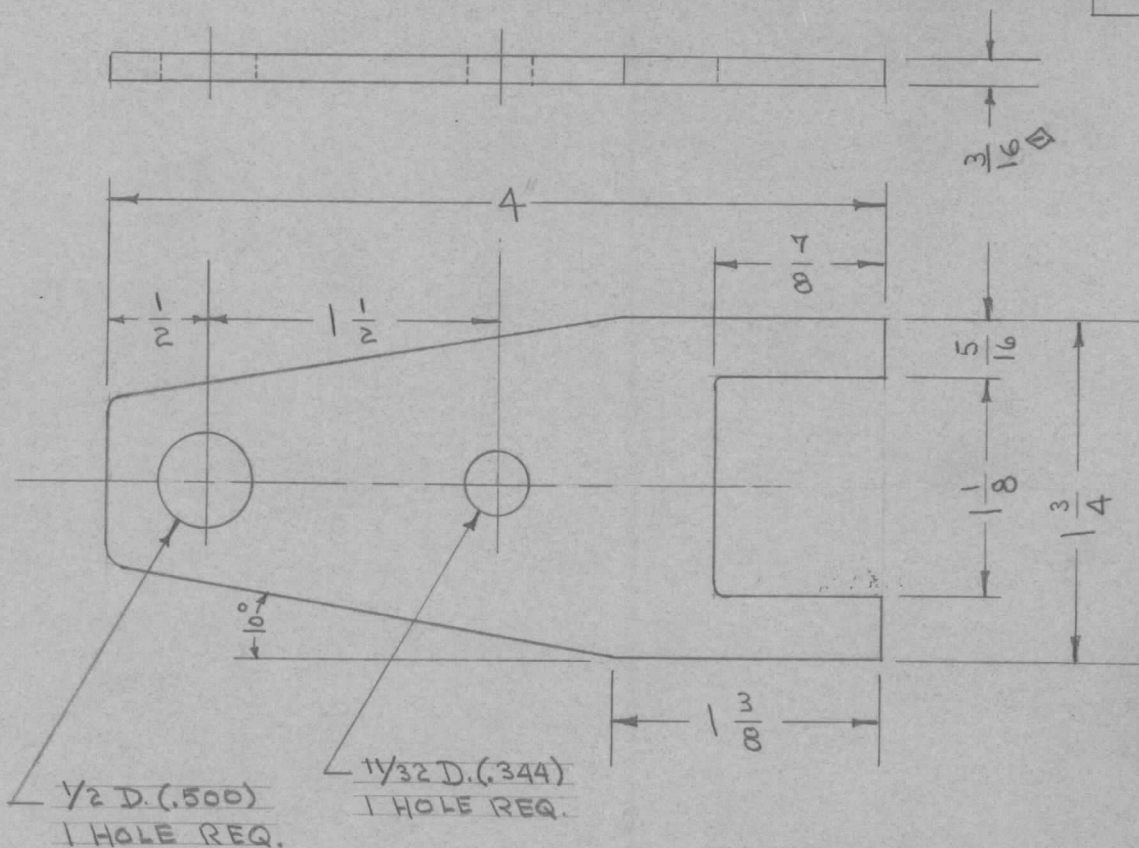
MS-153

A

MAXIMUM ALLOWABLE TOLERANCES HAVE BEEN DETERMINED AND DEVIATIONS WILL BE CAUSE FOR REJECTION. REMOVE ALL BURRS AND SHARP EDGES

USED ON

MODEL	PROJECT NO.	ASS'Y. NO.	DATE
	1A1	A-186	10-8-52



UNLESS OTHERWISE SPECIFIED DIMENSIONS ARE IN INCHES AND INCLUDE CHEMICALLY APPLIED OR PLATED FINISHES

DECIMALS	FRACTIONS
X ± .05	± 1/64
.XX ± .01	ANGLES ± 0° 30'
.XXX ± .005	

TOLERANCES

CUT HERE GUARANTEED 2-66

REQ.	ITEM	PART NO.	DESCRIPTION	SYMBOL
			3/16" x 1 3/4" RECT. BAR	
STOCK SIZE			THE TECHNICAL MATERIEL CORP. MAMARONECK, NEW YORK	
MATERIAL		WEIGHT PER PC.	ARM, CONTACT	
HALF HARD				
TYPE & TEMPER		C.D.D. 10-8-57		
		DRAWN	ELEC. DES. APP.	MECH. DES. APP.
HEAT TREAT. SPEC.		127B 10-9-52	JH	
FINISH & SPEC. NO.		CHECKED	FINAL APPROVAL	
			MS-153	A

ISSUE	ITEM	CHANGED FROM	DATE	CN. NO.	DRAFTS	CHECKER	ENG. APP.
A	1	VB	11/18/52	1	JAG	RFB	JH

TOLERANCES	SCALE	DRILL, PUNCH, COMMERCIAL STOCK SIZES AND MANUFACTURERS TOLERANCES ARE NOT INCLUDED.
ALL OTHERS DEC. DIM. ± FRAC. DIM. ± 1/64 ANGULAR DIM. ±	FULL	

IF IT IS FOUND DESIRABLE TO CHANGE ANY TOLERANCE OR OTHER DETAIL SPECIFIED ON THIS DRAWING NOTIFY THE PURCHASER PROMPTLY.

STANDARD DRAWING

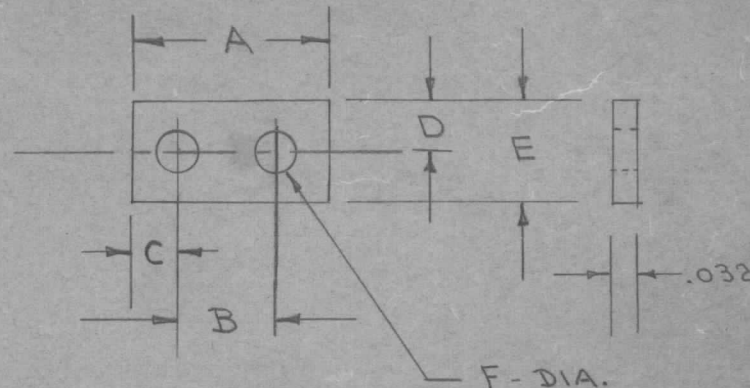
MS-154

MAXIMUM ALLOWABLE TOLERANCES HAVE BEEN DETERMINED AND DEVIATIONS WILL BE CAUSE FOR REJECTION. REMOVE ALL BURRS AND SHARP EDGES

USED ON

MODEL PROJECT NO. ASS'Y. NO. DATE

TMC. NO.	MFG. NO.	A	B	C	D	E	F
MS-154 -1	600	9/16	.312	.125	.140	9/32	.144
MS-154 -2	601	23/32	27/64	.148	.156	5/16	.148
MS-154 -3	602	7/8	1/2	.187	.203	13/32	.189



NOTICE TO PERSONS RECEIVING THIS DRAWING

THE TECHNICAL MATERIEL CORPORATION claims proprietary right in the material disclosed hereon. This drawing is issued in confidence for engineering information only and may not be reproduced or used to manufacture anything shown hereon without permission from THE TECHNICAL MATERIEL CORPORATION to the user. This drawing is loaned for mutual assistance and is subject to recall at any time.

Property of:

THE TECHNICAL MATERIEL CORPORATION
MAMARONECK, NEW YORK

UNLESS OTHERWISE SPECIFIED DIMENSIONS ARE IN INCHES AND INCLUDE CHEMICALLY APPLIED OR PLATED FINISHES	
DECIMALS	FRACTIONS
.X ± .05	± 1/64
.XX ± .01	ANGLES
.XXX ± .005	± 0° 30'

CUT HERE
GUARANTEED
2-66

DIMENSIONS FOR REFERENCE ONLY

REF.: KULKA ELEC. MFRG. CO.

REQ.	ITEM	PART NO.	DESCRIPTION	SYMBOL
		.032	THE TECHNICAL MATERIEL CORP. MAMARONECK, NEW YORK	
		STAINLESS STEEL	STRADDLE PLATE	
		MATERIAL	WEIGHT PER PC.	
		TYPE & TEMPER	C.O.D. 10-13-57	G.T.O. 10/13/57
		HEAT TREAT. SPEC.	DRAWN	ELEC. DES. APP. MECH. DES. APP.
		S-104 (PASSIVATION)	AD 10-13-57	FINAL APPROVAL
		FINISH & SPEC. NO.	CHECKED	MS-154

ISSUE	ITEM	CHANGED FROM	DATE	CN. NO.	DRAFTS	CHECKER	ENG. APP.
TOLERANCES			SCALE				
ALL OTHERS	DEC. DIM. ± FRAC. DIM. ± ANGULAR DIM. ±		DRILL, PUNCH, COMMERCIAL STOCK SIZES AND MANUFACTURERS TOLERANCES ARE NOT INCLUDED.				

IF IT IS FOUND DESIRABLE TO CHANGE ANY TOLERANCE OR OTHER DETAIL SPECIFIED ON THIS DRAWING NOTIFY THE PURCHASER PROMPTLY.

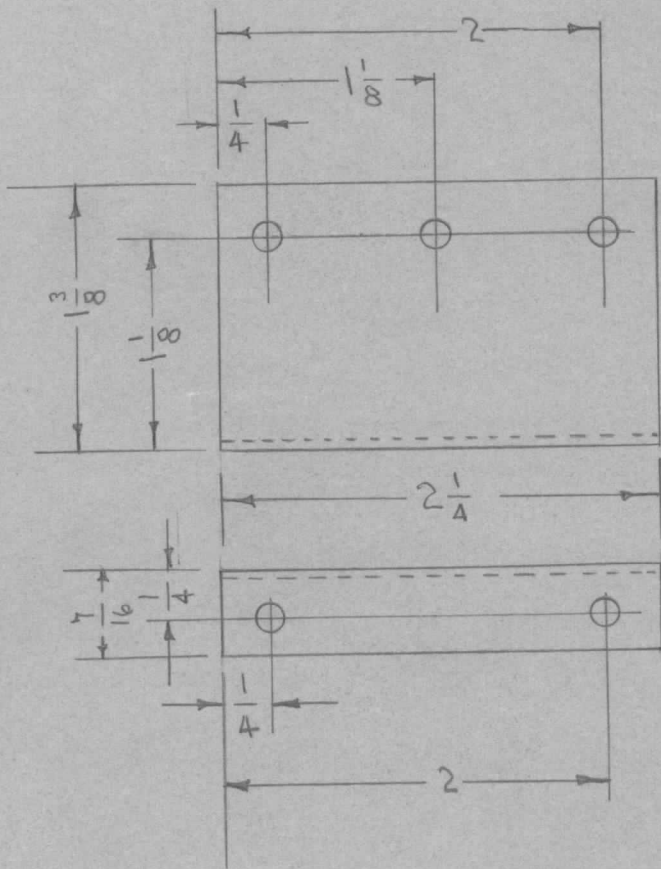
RELEASED

MS-156 A

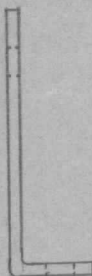
MAXIMUM ALLOWABLE TOLERANCES HAVE BEEN DETERMINED AND DEVIATIONS WILL BE CAUSE FOR REJECTION. REMOVE ALL BURRS AND SHARP EDGES

USED ON

MODEL	PROJECT NO.	ASS'Y. NO.	DATE
LFA	109	A-201	10-22-57



ALL HOLES = $\frac{11}{64}$ D



UNLESS OTHERWISE SPECIFIED
DIMENSIONS ARE IN INCHES AND INCLUDE
CHEMICALLY APPLIED OR PLATED FINISHES

DECIMALS	TOLERANCES	FRACTIONS
.X ± .05		± 1/64
.XX ± .01		ANGLES
.XXX ± .005		± 0° 30'

CUT HERE
GUARANTEED
2-66

REQ.	ITEM	PART NO.	DESCRIPTION	SYMBOL
		.051	THE TECHNICAL MATERIEL CORP. MAMARONECK, NEW YORK	
		ALUMINUM	BRACKET, RESISTOR.	
		525 H32		
		C.D.D. 10-22-57	A. J. J.	10/24/57
		SA04 (IRIDITE)		

ISSUE	ITEM	CHANGED FROM	DATE	CN. NO.	DRAFTS	CHECKER	ENG. APP.
A	1	5-404 - IRIDITE WAS 5-101 - CAUSTIC DIP	12-7 57	1001	P		EMN
TOLERANCES			SCALE FULL				
ALL OTHERS			DRILL, PUNCH, COMMERCIAL STOCK SIZES AND MANUFACTURERS TOLERANCES ARE NOT INCLUDED.				

DRAWN	ELEC. DES. APP.	MECH. DES. APP.	HEAT TREAT. SPEC.	FINISH & SPEC. NO.	FINAL APPROVAL
M.H.S.					MS-156 A

IF IT IS FOUND DESIRABLE TO CHANGE ANY TOLERANCE OR OTHER DETAIL SPECIFIED ON THIS DRAWING NOTIFY THE PURCHASER PROMPTLY.

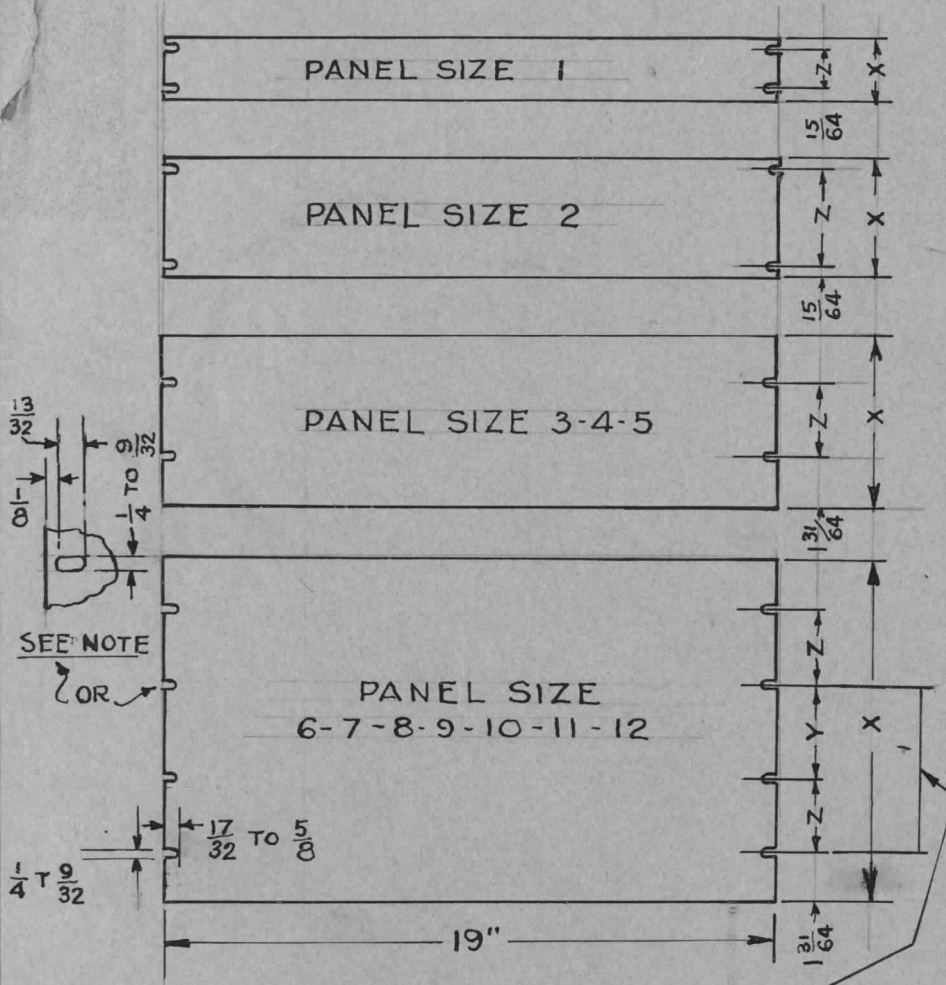
STANDARD

MS-157

MAXIMUM ALLOWABLE TOLERANCES HAVE BEEN DETERMINED AND DEVIATIONS WILL BE CAUSE FOR REJECTION. REMOVE ALL BURRS AND SHARP EDGES

USED ON

MODEL PROJECT NO. ASS'Y. NO. DATE



NOTE WHEN OBLONG HOLES ARE REQUIRED INSTEAD OF OPEN SLOTS ADD THE LETTER "H" TO NUMBER.
EXAMPLE :- MS - 157 - 2 H

TABLE OF PANEL SIZES

TMC NO	DIMENSION X	DIMENSION Y	DIMENSION Z
MS-157 - 1	1 23/32		1 1/4
MS-157 - 2	3 15/32		3
MS-157 - 3	5 7/32		2 1/4
MS-157 - 4	6 31/32		4
MS-157 - 5	8 23/32		5 3/4
MS-157 - 6	10 15/32	3	2 1/4
MS-157 - 7	12 7/32	2 1/4	3 1/2
MS-157 - 8	13 31/32	3	4
MS-157 - 9	15 23/32	4 3/4	4
MS-157 - 10	17 15/32	6 1/2	4
MS-157 - 11	19 7/32	5 3/4	5 1/4
MS-157 - 12	20 31/32	7 1/2	5 1/4

SEE NOTE

OR

TOLERANCE BETWEEN ANY TWO SLOTS $\pm \frac{1}{64}$

NOTE:- TRACED FROM DWG MS-157- AUG 29/54- CHK APP

REQ.	ITEM	PART NO.	DESCRIPTION	SYMBOL
		3/16 SHEET	TMC (Canada) LIMITED OTTAWA ONTARIO	
		STOCK SIZE		
		ALUMINUM	PANEL RACK BLANKS	
		MATERIAL		
		6 5 ST		
		TYPE & TEMPER	6 10-21-52	10-21-52
		HEAT TREAT. SPEC.	DRAWN	ELEC. DES. APP. MECH. DES. APP.
		FINISH & SPEC. NO.	10-21-52	MS-157
			CHECKED	FINAL APPROVAL
				SEE NOTE

ISSUE	ITEM	CHANGED FROM	DATE	CN. NO.	DRAFTS	CHECKER	ENG. APP.
TOLERANCES		SCALE					
ALL OTHERS	DEC. DIM. $\pm \frac{1}{64}$	DRILL, PUNCH, COMMERCIAL STOCK SIZES AND MANUFACTURERS TOLERANCES ARE NOT INCLUDED.					
	FRAC. DIM. $\pm \frac{1}{64}$						
	ANGULAR DIM. \pm						

IF IT IS FOUND DESIRABLE TO CHANGE ANY TOLERANCE OR OTHER DETAIL SPECIFIED ON THIS DRAWING NOTIFY THE PURCHASER PROMPTLY.

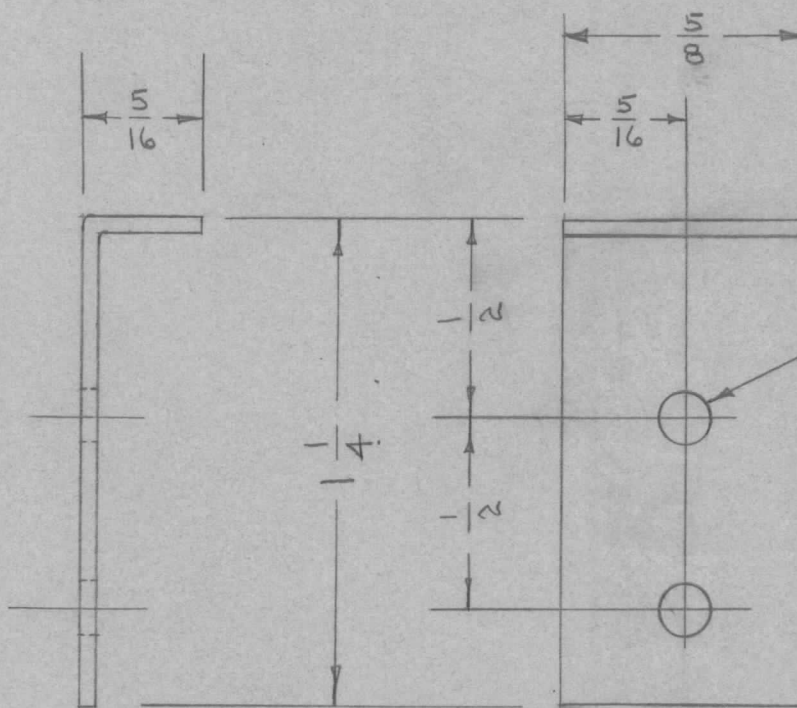
RELEASED

MS-162 A

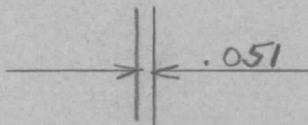
MAXIMUM ALLOWABLE TOLERANCES HAVE BEEN DETERMINED AND DEVIATIONS WILL BE CAUSE FOR REJECTION. REMOVE ALL BURRS AND SHARP EDGES

USED ON

MODEL	PROJECT NO.	ASS'Y. NO.	DATE
LFA	109	A-183	10-24-57



9/64 D. (.141) 2 HOLES REQ.



UNLESS OTHERWISE SPECIFIED
DIMENSIONS ARE IN INCHES AND INCLUDE
CHEMICALLY APPLIED OR PLATED FINISHES

DECIMALS	FRACTIONS
.X ± .05	± 1/64
.XX ± .01	ANGLES
.XXX ± .005	± 0° 30'

TOLERANCES

CUT HERE
GUARANTEED
2-66

REQ.	ITEM	PART NO.	DESCRIPTION	SYMBOL
		.051 thk.	THE TECHNICAL MATERIEL CORP.	
		STOCK SIZE	MAMARONECK, NEW YORK	
		ALUMINUM	BRACKET, COVER	
		MATERIAL		
		WEIGHT PER PC.		
		525 H32		
		TYPE & TEMPER		
		H		
		HEAT TREAT. SPEC.		
		S404 IRIDITE		
		FINISH & SPEC. NO.		

A	1	S404 - IRIDITE WAS S101 - CAUSTIC DIP.	12-7 59	1001	P		EMN
ISSUE	ITEM	CHANGED FROM	DATE	CN. NO.	DRAFTS	CHECKER	ENG. APP.
		TOLERANCES	SCALE TWICE SIZE				
ALL OTHERS	DEC. DIM. ± FRAC. DIM. ± 1/64 ANGULAR DIM. ±		DRILL, PUNCH, COMMERCIAL STOCK SIZES AND MANUFACTURERS TOLERANCES ARE NOT INCLUDED.				

c.i.d.10-24-57		
DRAWN	ELEC. DES. APP.	MECH. DES. APP.
WDC 10-24		
CHECKED	FINAL APPROVAL	
SUPERCEDES AMS 141	MS-162	A

IF IT IS FOUND DESIRABLE TO CHANGE ANY TOLERANCE OR OTHER DETAIL SPECIFIED ON THIS DRAWING NOTIFY THE PURCHASER PROMPTLY.

RELEASED

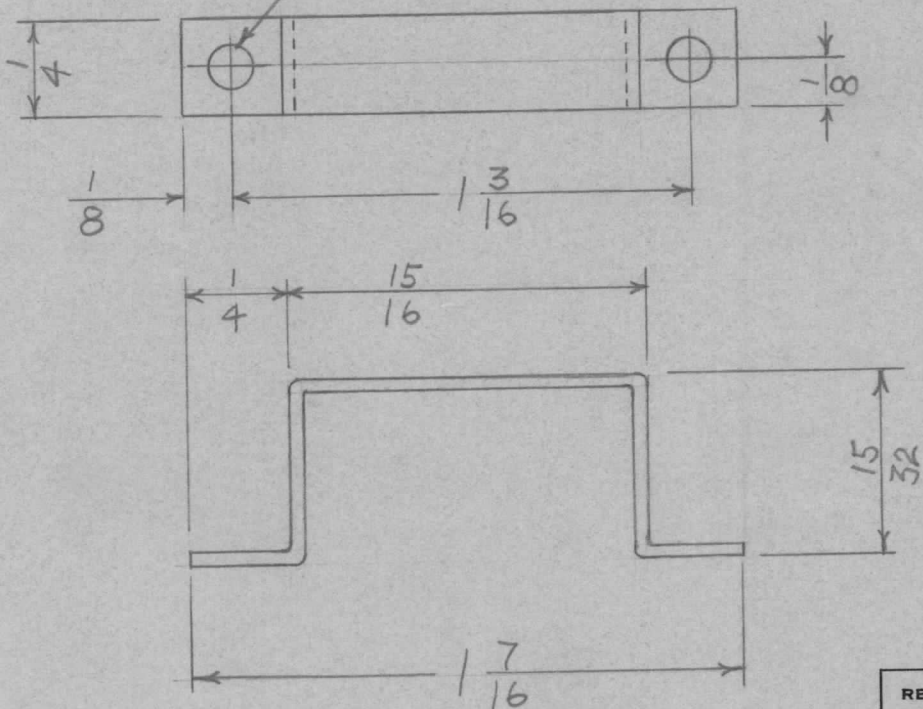
MS-169 \emptyset

MAXIMUM ALLOWABLE TOLERANCES HAVE BEEN DETERMINED AND DEVIATIONS WILL BE CAUSE FOR REJECTION. REMOVE ALL BURRS AND SHARP EDGES

USED ON

MODEL	PROJECT NO.	ASS'Y. NO.	DATE
AMD-1	144	A-206	10-24-52

$\frac{9}{64}(.140)D. - 2 \text{ HOLES}$



UNLESS OTHERWISE SPECIFIED DIMENSIONS ARE IN INCHES AND INCLUDE CHEMICALLY APPLIED OR PLATED FINISHES		
DECIMALS	TOLERANCES	FRACTIONS
.X \pm .05		\pm 1/64
.XX \pm .01		ANGLES
.XXX \pm .005		\pm 0° 30'

CUT HERE
GUARANTEED
2-66

REQ.	ITEM	PART NO.	DESCRIPTION	SYMBOL
		.032 THICK	THE TECHNICAL MATERIEL CORP.	
		STOCK SIZE	MAMARONECK, NEW YORK	
		BRASS	BRACKET	
		MATERIAL		
		WEIGHT PER PC.		
		HALF HARD		
		TYPE & TEMPER	WDC 10-24	G.T.O
			DRAWN	ELEC. DES. APP.
			MECH. DES. APP.	
			P.J.K. 10-4-52	S.M. 9/26/69
			CHECKED	FINAL APPROVAL
		S-105		MS-169 \emptyset
		FINISH & SPEC. NO.		

ISSUE	ITEM	CHANGED FROM	DATE	CN. NO.	DRAFTS	CHECKER	ENG. APP.
\emptyset		ORIGINAL RELEASE	9/26/69				
TOLERANCES		SCALE TWICE					
ALL OTHERS	DEC. DIM. \pm	DRILL, PUNCH, COMMERCIAL STOCK SIZES AND MANUFACTURERS TOLERANCES ARE NOT INCLUDED.					
	FRAC. DIM. \pm Y64						
	ANGULAR DIM. \pm						

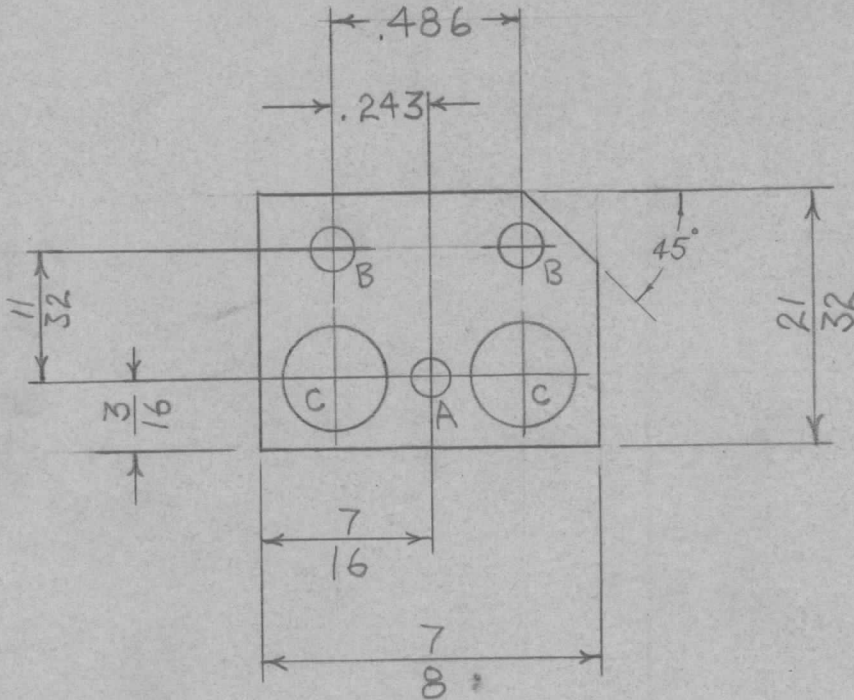
IF IT IS FOUND DESIRABLE TO CHANGE ANY TOLERANCE OR OTHER DETAIL SPECIFIED ON THIS DRAWING NOTIFY THE PURCHASER PROMPTLY.

RELEASED

MS-170 B

MAXIMUM ALLOWABLE TOLERANCES HAVE BEEN DETERMINED AND DEVIATIONS WILL BE CAUSE FOR REJECTION. REMOVE ALL BURRS AND SHARP EDGES

REQ PER UNIT	USED ON			
	MODEL	PROJECT NO.	ASS'Y. NO.	DATE
	FFRD-5	104	A-228	10-17-52
	FFRD-6	104	A-228	10-17-52
	FFRD-7	104	A-228	10-17-52
	FFRD-8	104	A-228	10-17-52
1	FFRD-1,2,3	E-458-P		4/16/56



LEGEND.

A = 1/8 (.125) D. - 1 HOLE

B = 9/64 (.140) D. - 2 HOLES

C = 9/32 (.281) D. - 2 HOLES

REQ.	ITEM	PART NO.	DESCRIPTION	SYMBOL
		064	THE TECHNICAL MATERIEL CORP.	
		STOCK SIZE	MAMARONECK, NEW YORK	
		ALUM. -#-	CRYSTAL BRACKET	
		MATERIAL		
		52S-H32		
		WEIGHT PER PC.		
		TYPE & TEMPER	WDC 10/17	
			DRAWN	ELEC. DES. APP.
				MECH. DES. APP.
			CHECKED	FINAL APPROVAL
		HEAT TREAT. SPEC.		
		S-404-IRIDITE		MS-170 B
		FINISH & SPEC. NO.		

B	1	S404-IRIDITE WAS S101 CAUSTIC DIP	12-7 59	1001	P	EMN	
A	1	45° NOTCH ADDED	12-280	1	1/3	WDC	
ISSUE	ITEM	CHANGED FROM	DATE	CN. NO.	DRAFTS	CHECKER	ENG. APP.
		TOLERANCES	SCALE 2x1				
ALL OTHERS		DEC. DIM. ± .005 FRAC. DIM. ± 1/64 ANGULAR DIM. ±	DRILL, PUNCH, COMMERCIAL STOCK SIZES AND MANUFACTURERS TOLERANCES ARE NOT INCLUDED.				

IF IT IS FOUND DESIRABLE TO CHANGE ANY TOLERANCE OR OTHER DETAIL SPECIFIED ON THIS DRAWING NOTIFY THE PURCHASER PROMPTLY.

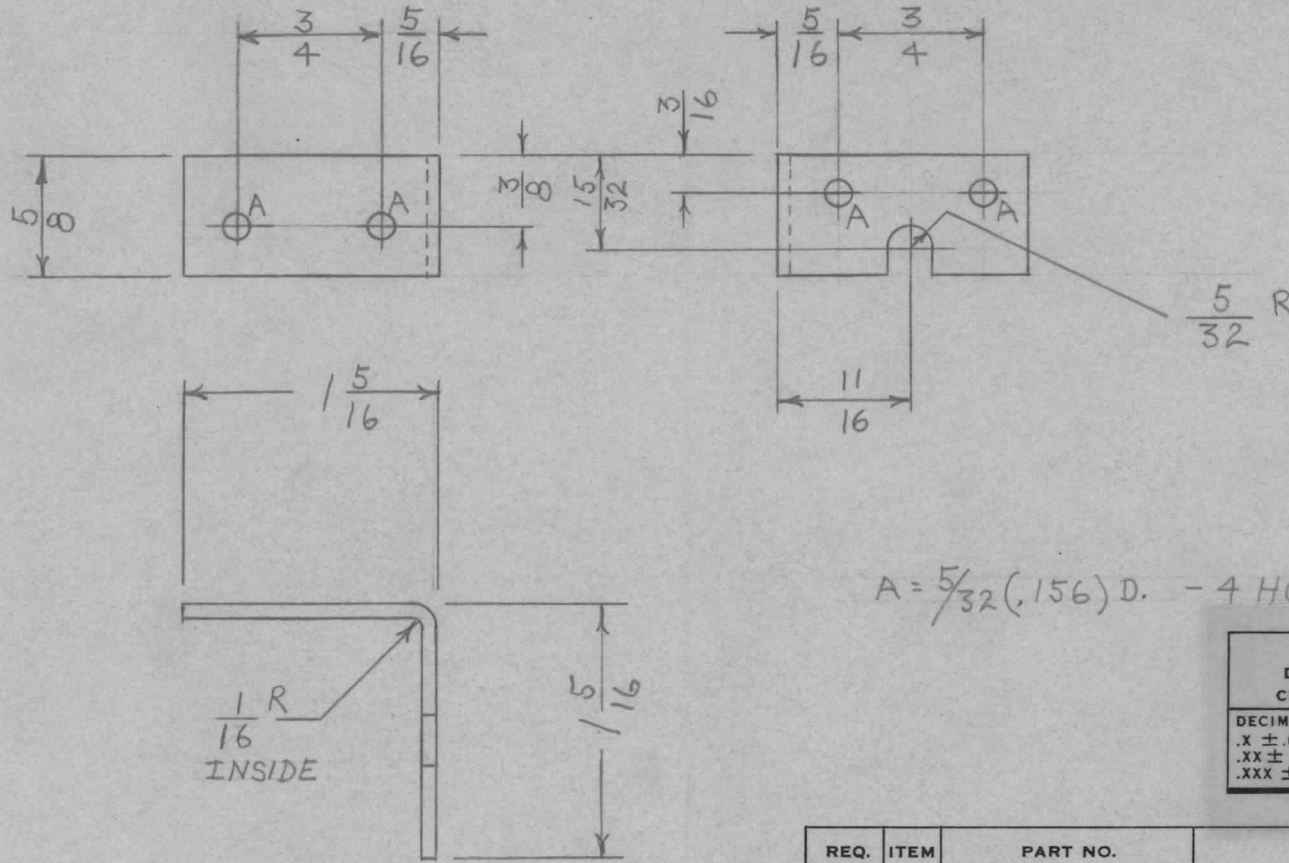
RELEASED

MS-171 A

MAXIMUM ALLOWABLE TOLERANCES HAVE BEEN DETERMINED AND DEVIATIONS WILL BE CAUSE FOR REJECTION. REMOVE ALL BURRS AND SHARP EDGES

USED ON

MODEL	PROJECT NO.	ASS'Y. NO.	DATE
AMD-1	144	A-227	10-10-52



UNLESS OTHERWISE SPECIFIED DIMENSIONS ARE IN INCHES AND INCLUDE CHEMICALLY APPLIED OR PLATED FINISHES		
DECIMALS	TOLERANCES	FRACTIONS
.X ± .05		± 1/64
.XX ± .01		ANGLES
.XXX ± .005		± 0° 30'

CUT HERE
GUARANTEED
2-66

REQ.	ITEM	PART NO.	DESCRIPTION	SYMBOL
		.064	THE TECHNICAL MATERIEL CORP. MAMARONECK, NEW YORK	
		STOCK SIZE		
		ALUM.	RELAY BRACKET	
		MATERIAL		
		WEIGHT PER PC.		
		52S - H32		
		TYPE & TEMPER	WDC 10/10	G.T.O. PJB
			DRAWN	ELEC. DES. APP. MECH. DES. APP.
		HEAT TREAT. SPEC.	PLK 12-4-52	SPM
		FINISH & SPEC. NO.	CHECKED	FINAL APPROVAL
				MS-171 A

A	1	S404 IRIDITE WAS S101 CAUSTIC DIP	12-7 59	1001	P	EMN	
ISSUE	ITEM	CHANGED FROM	DATE	CN. NO.	DRAFTS	CHECKER	ENG. APP.
TOLERANCES		SCALE FULL					
ALL OTHERS	DEC. DIM. ±	DRILL, PUNCH, COMMERCIAL STOCK SIZES AND MANUFACTURERS TOLERANCES ARE NOT INCLUDED.					
	FRAC. DIM. ± 1/64						
	ANGULAR DIM. ±						

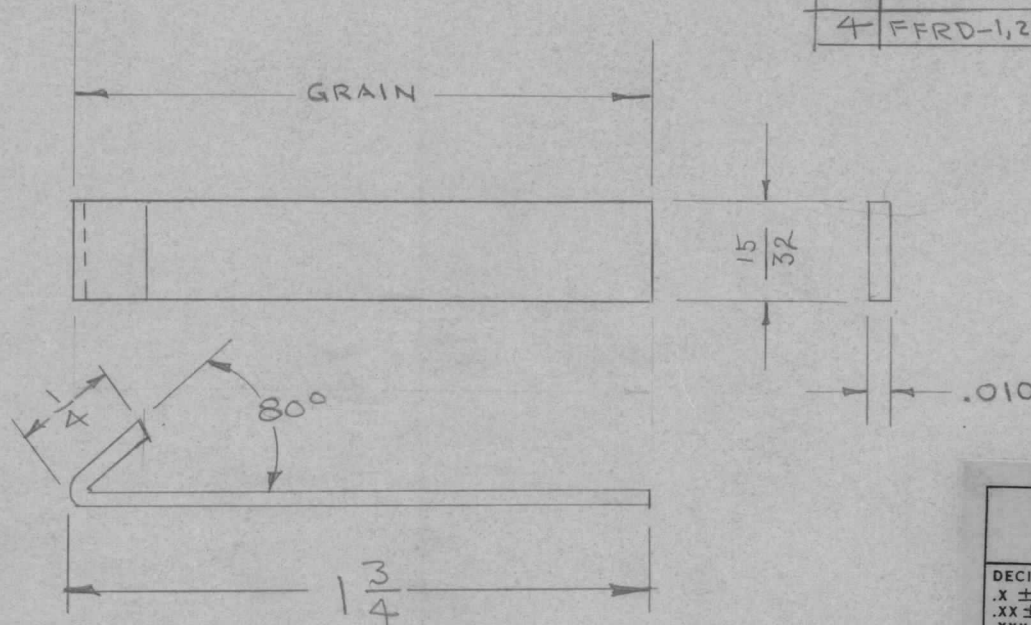
IF IT IS FOUND DESIRABLE TO CHANGE ANY TOLERANCE OR OTHER DETAIL SPECIFIED ON THIS DRAWING NOTIFY THE PURCHASER PROMPTLY.

RELEASED

MS-192 C

MAXIMUM ALLOWABLE TOLERANCES HAVE BEEN DETERMINED AND DEVIATIONS WILL BE CAUSE FOR REJECTION. REMOVE ALL BURRS AND SHARP EDGES

REQ PER UNIT	USED ON			
	MODEL	PROJECT NO.	ASS'Y. NO.	DATE
	FFRD-5	104	A-323	12-24-52
	FFRD-6	104	A-323	12-24-52
	FFRD-7	104	A-323	12-24-52
	FFRD-8	104	A-323	12-24-52
4	FFRD-1,2,3	E-458-T		4/16/56



UNLESS OTHERWISE SPECIFIED DIMENSIONS ARE IN INCHES AND INCLUDE CHEMICALLY APPLIED OR PLATED FINISHES

DECIMALS	FRACTIONS
.X ± .05	± 1/64
.XX ± .01	ANGLES ± 0° 30'
.XXX ± .005	

TOLERANCES

CUT HERE GUARANTEED 2-56

REQ.	ITEM	PART NO.	DESCRIPTION	SYMBOL
			.010 THICK	
			STOCK SIZE	
			PHOSPHOR BRONZE	#
			MATERIAL	WEIGHT PER PC.
			TYPE & TEMPER	
			HEAT TREAT. SPEC.	
			S-105 CADMIUM PLATE	
			FINISH & SPEC. NO.	

THE TECHNICAL MATERIEL CORP.		MAMARONECK, NEW YORK	
GROUND STRIP			
C.D.D. 12-24-52		P.P.B.	
DRAWN	ELEC. DES. APP.	MECH. DES. APP.	
W.D.C. 12-26		S.P.M.	
CHECKED	FINAL APPROVAL		

ISSUE	ITEM	CHANGED FROM	DATE	CN. NO.	DRAFTS	CHECKER	ENG. APP.
C	1	80° WAS 60°	1-16-56	3	P.B.	J.A.R.	W.D.
B	2	Bend Added	6-3-53	2	J.A.R.	P.P.B.	P.P.B.
A	1	2 WAS 2 3/4. .DIO WAS .014.	2/24/53	1	W.D.C.	P.P.B.	P.P.B.

TOLERANCES		SCALE	#
ALL OTHERS	DEC. DIM. ± FRAC. DIM. ± 1/64 ANGULAR DIM. ±	DRILL, PUNCH, COMMERCIAL STOCK SIZES AND MANUFACTURERS TOLERANCES ARE NOT INCLUDED.	

MS-192 C

IF IT IS FOUND DESIRABLE TO CHANGE ANY TOLERANCE OR OTHER DETAIL SPECIFIED ON THIS DRAWING NOTIFY THE PURCHASER PROMPTLY.

RELEASED

MS-193

MAXIMUM ALLOWABLE TOLERANCES HAVE BEEN DETERMINED AND DEVIATIONS WILL BE CAUSE FOR REJECTION. REMOVE ALL BURRS AND SHARP EDGES

REQ
PER
UNIT

USED ON

MODEL

PROJECT NO.

ASS'Y. NO.

DATE

FFRD-5

104

A-228

12-24-52

FFRD-6

104

A-228

12-24-52

FFRD-7

104

A-228

12-24-52

FFRD-8

104

A-228

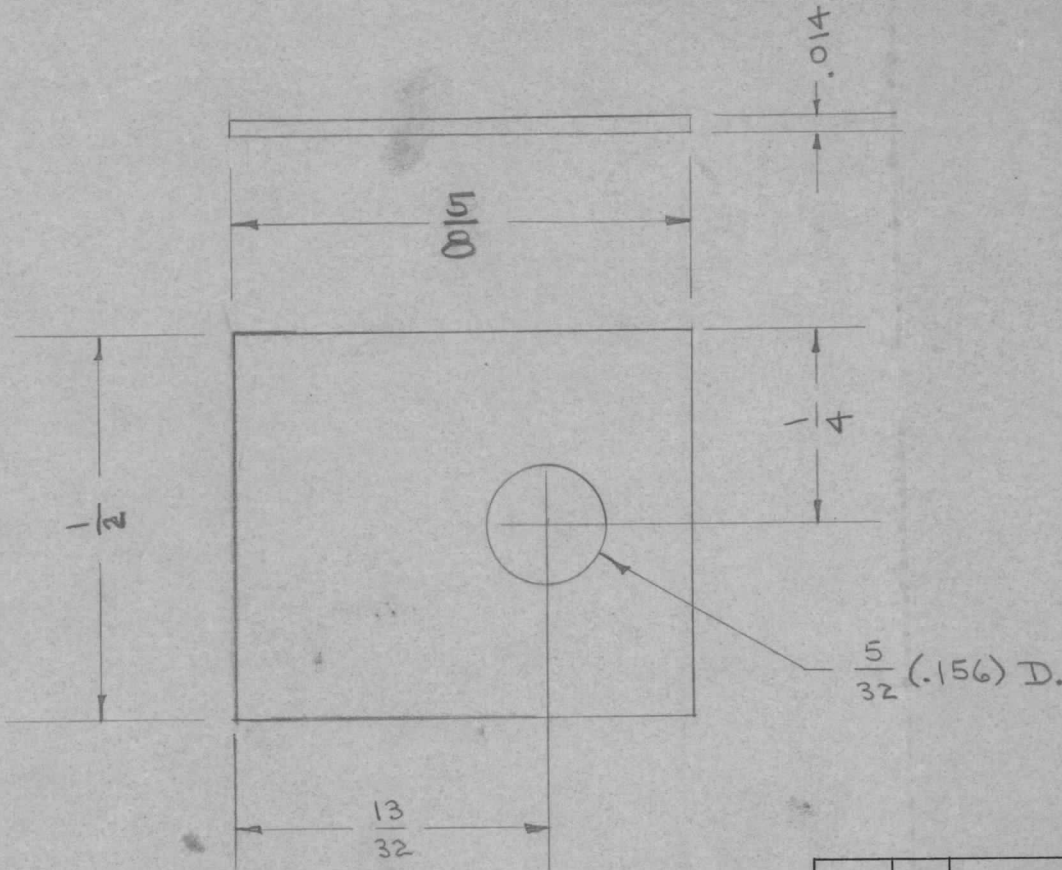
12-24-52

2

FFRD-1,2,3

E-458-P

4/16/56



UNLESS OTHERWISE SPECIFIED DIMENSIONS ARE IN INCHES AND INCLUDE CHEMICALLY APPLIED OR PLATED FINISHES		
DECIMALS	TOLERANCES	FRACTIONS
.X ± .05		± 1/64
.XX ± .01		ANGLES
.XXX ± .005		± 0° 30'

CUT HERE
GUARANTEED
2-66

REQ.	ITEM	PART NO.	DESCRIPTION	SYMBOL
			THE TECHNICAL MATERIEL CORP. MAMARONECK, NEW YORK	
		.014 THICK		
		STOCK SIZE		
		PHOSPHOR BRONZE		LENS CLAMP
		MATERIAL		
		WEIGHT PER PC.		
		TYPE & TEMPER	CD.D. 12-24-52	
		HEAT TREAT. SPEC.	W.D.C. 12-26	
		FINISH & SPEC. NO.	8-105 CADMIUM PLATE	
			CHECKED	FINAL APPROVAL
				MS-193

Ø	ORIGINAL RELEASE	9/26/69	W				
ISSUE	ITEM	CHANGED FROM	DATE	CN. NO.	DRAFTS	CHECKER	ENG. APP.
		TOLERANCES					
			SCALE				
ALL OTHERS	DEC. DIM. ±	FRAC. DIM. ± 1/64	ANGULAR DIM. ±	DRILL, PUNCH, COMMERCIAL STOCK SIZES AND MANUFACTURERS TOLERANCES ARE NOT INCLUDED.			