

IF IT IS FOUND DESIRABLE TO CHANGE ANY TOLERANCE OR OTHER DETAIL SPECIFIED ON THIS DRAWING NOTIFY THE PURCHASER PROMPTLY.

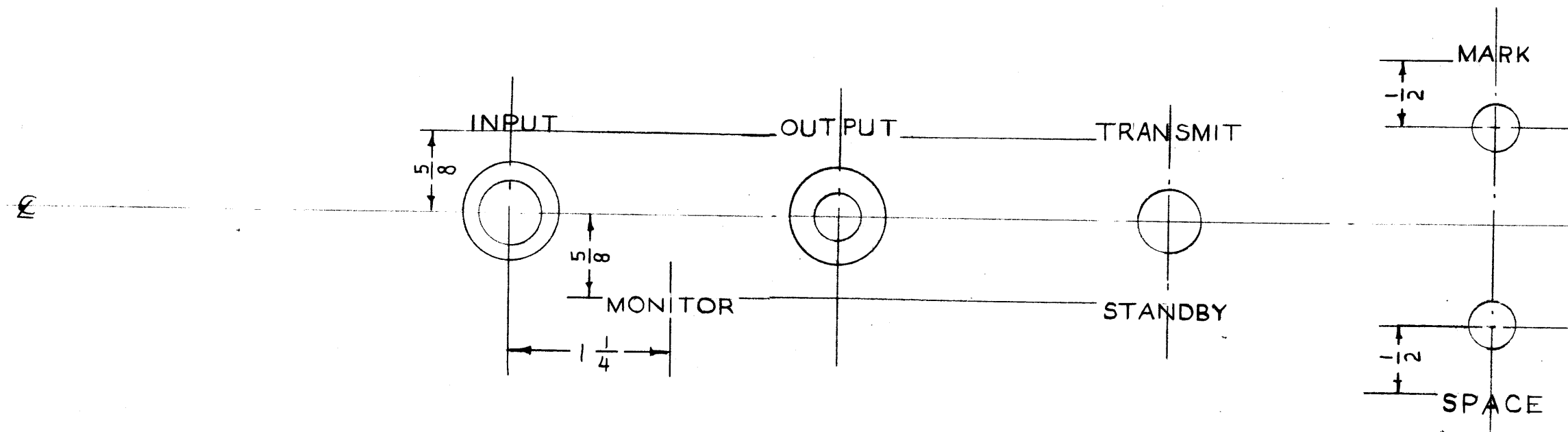
MAXIMUM ALLOWABLE TOLERANCES HAVE BEEN DETERMINED AND DEVIATIONS WILL BE CAUSE FOR REJECTION. REMOVE ALL BURRS AND SHARP EDGES

**NOTICE TO PERSONS RECEIVING THIS DRAWING**

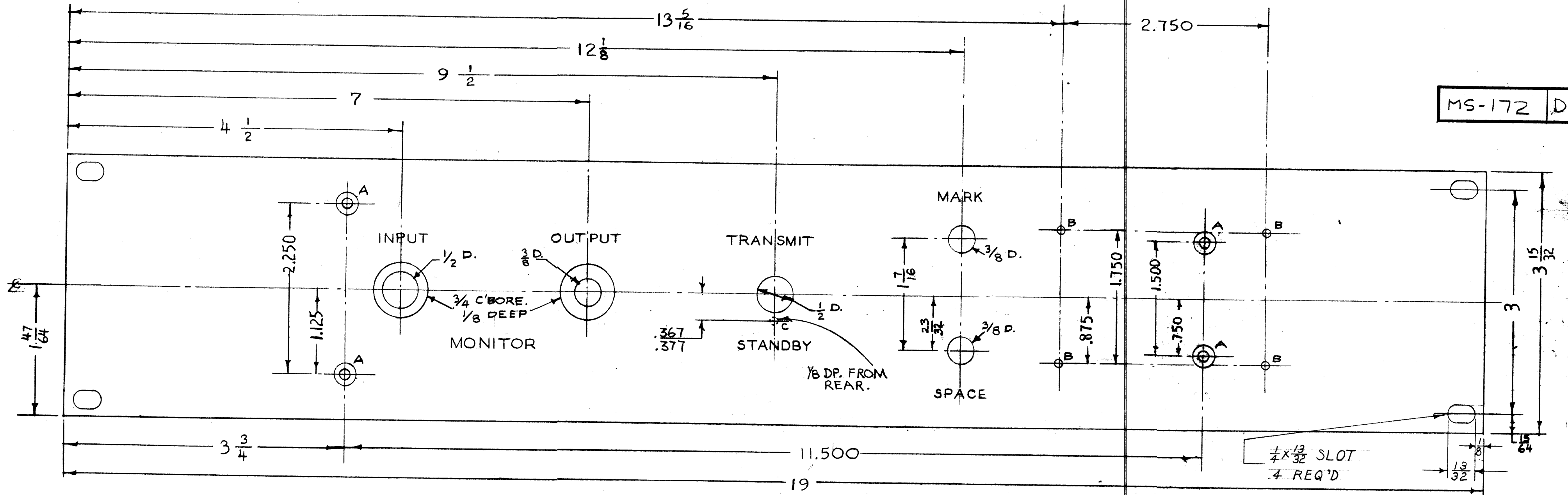
THE TECHNICAL MATERIEL CORPORATION claims proprietary right in the material disclosed hereon. This drawing is issued in confidence for engineering information only and may not be reproduced or used to manufacture anything shown hereon without permission from THE TECHNICAL MATERIEL CORPORATION to the user. This drawing is loaned for mutual assistance and is subject to recall at any time.

Property of:

THE TECHNICAL MATERIEL CORPORATION  
MAMARONECK, NEW YORK



ALL LETTERING 1/8 HIGH,  
ENGRAVED, WHITE FILLED GOTHIC  
DEPTH OF STROKE - .010  
WIDTH " " - .020



MS-172 D

**LEGEND:**  
A = DR. & C'SK. FOR B-32 FLAT HEAD SCREW - 4 REQ'D.  
B = #47 (.078) - 4 HOLES REQ.  
C = 1/8 D. (.125) x 1/8 DEEP FROM REAR.

**NOTE:**  
S-114 ZINC CHROMATE PRIMER  
S-115 SMOOTH GREY ENAMEL  
S-404 YELLOW IRIDITE

**PAIN ONLY FRONT & EDGES OF PANEL**  
**FRONT VIEW SHOWN**

XFD-1	160	A-322	12-9-52
MODEL	PROJECT NO.	ASSY. NO.	DATE

D	1	S-404 WAS S-101	7/15/52	1001	1/8	EMN	
C	1	ENG. INFO ADDED	5/19/52	3	1/8	EMN	
B	2	PAINT NOTE ADDED	7/3/53	2	1/8	EMN	
A	1	OBLONG HOLES WERE OPEN SLOTS	7/7/53	1	1/8	F.M. O.P.P.	
ISSUE	ITEM	CHANGED FROM	DATE	CN. NO.	DRAFTS	CHECKER	ENG. APP.
TOLERANCES		SCALE: 1/8"					
ALL OTHERS	DEC. DIM. ± .005 FRAC. DIM. ± 1/64 ANGULAR DIM. ±	DRILL, PUNCH, COMMERCIAL STOCK SIZES AND MANUFACTURERS TOLERANCES ARE NOT INCLUDED.					

REQ. ITEM	PART NO.	DESCRIPTION	SYMBOL
	3/16 THK.	THE TECHNICAL MATERIEL CORP.	
	STOCK SIZE	MAMARONECK, NEW YORK	
	ALUMINUM	FRONT PANEL	
	MATERIAL	WEIGHT PER PC.	
	24S-T3		
	TYPE & TEMPER	1612-9-52	
	HEAT TREAT. SPEC.	DRAWN	ELEC. DES. APP.
	SEE NOTE	C.D.D.	MECH. DES. APP.
	FINISH & SPEC. NO.	CHECKED	FINAL APPROVAL
		SUPERCEDES	
		CMS05A	
		CMM01A	
		MS-172 D	

