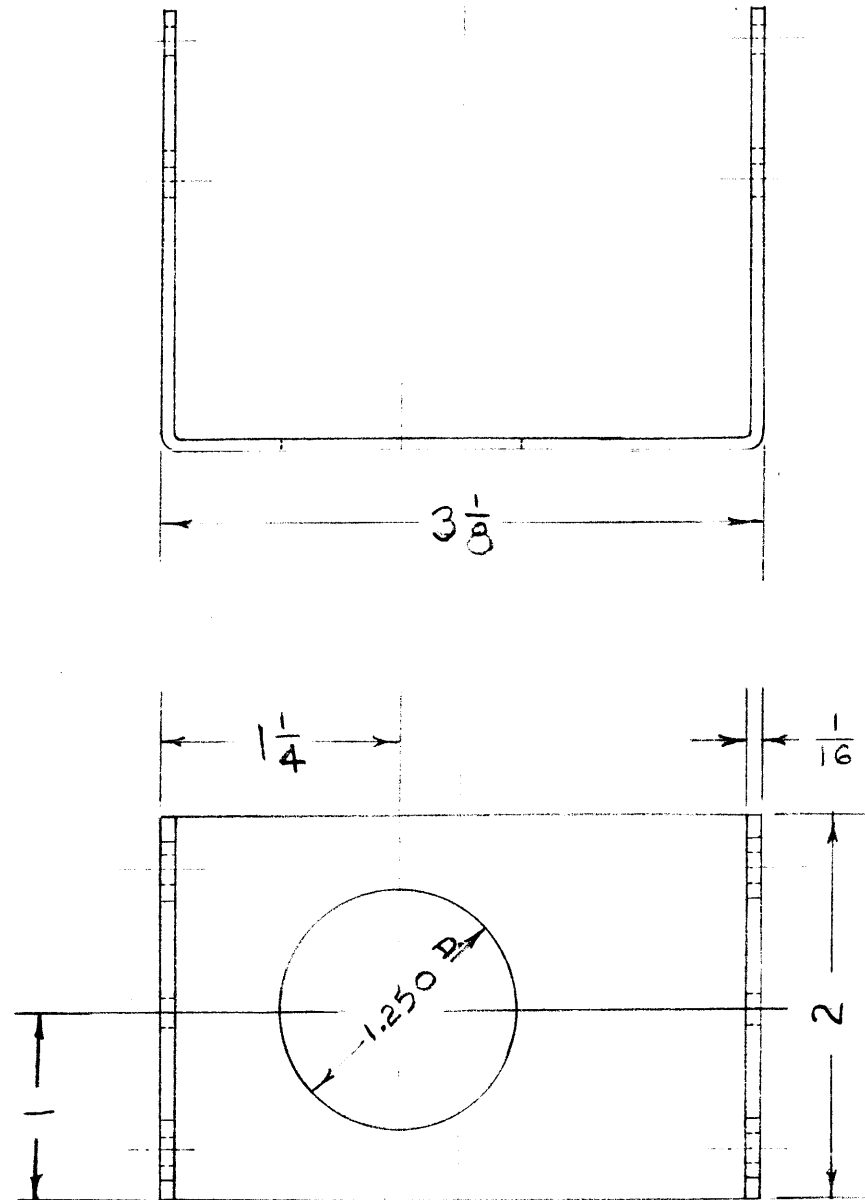


IF IT IS FOUND DESIRABLE TO CHANGE ANY TOLERANCE OR OTHER DETAIL SPECIFIED ON THIS DRAWING NOTIFY THE PURCHASER PROMPTLY.

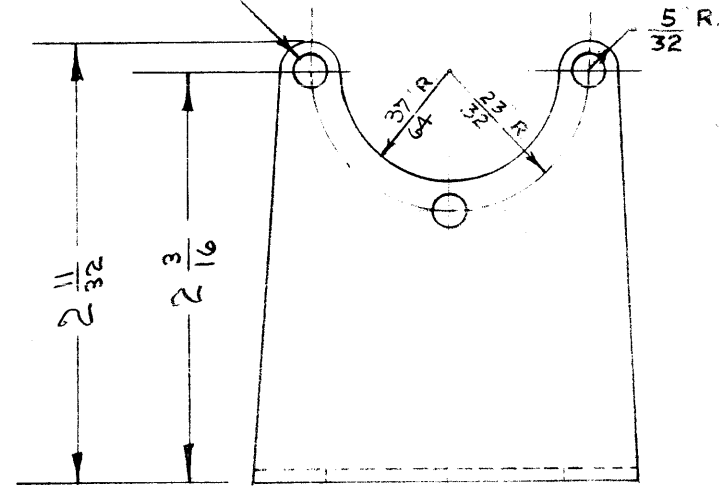
MAXIMUM ALLOWABLE TOLERANCES HAVE BEEN DETERMINED AND DEVIATIONS WILL BE CAUSE FOR REJECTION. REMOVE ALL BURRS AND SHARP EDGES

RELEASED

MS-160 B



9/64 D. (.140) 6 HOLES



NOTE TO PERSONS RECEIVING THIS DRAWING

THE TECHNICAL MATERIEL CORPORATION claims proprietary right in the material disclosed hereon. This drawing is issued in confidence for engineering information only and may not be reproduced or used to manufacture anything shown hereon without permission from THE TECHNICAL MATERIEL CORPORATION to the user. This drawing is loaned for mutual assistance and is subject to recall at any time.

Property of:
THE TECHNICAL MATERIEL CORPORATION
MAMARONECK, NEW YORK



B	2	3/8 WAS 37/32	9-9-53	2		PJM	PJM
A	1	DIMENSIONS CHANGED	3/2/53	1	C.D.D.	PJM	PJM
ISSUE	ITEM	CHANGED FROM	DATE	CN. NO.	DRAFTS	CHECKER	ENG. APP.

TOLERANCES		SCALE:
ALL OTHERS	DEC. DIM. ± .005 FRAC. DIM. ± 1/64 ANGULAR DIM. ±	DRILL, PUNCH, COMMERCIAL STOCK SIZES AND MANUFACTURERS TOLERANCES ARE NOT INCLUDED.

TWR-115	151	A-216	9-8-52
MODEL	PROJECT NO.	ASS'Y. NO.	DATE
USED ON			

REQ.	ITEM	PART NO.	DESCRIPTION	SYMBOL
	16 GA. (.062)		THE TECHNICAL MATERIEL CORP. MAMARONECK, NEW YORK	
	STOCK SIZE		SADDLE FRAME	
	STEEL	ff		
	MATERIAL	WEIGHT PER PC.		
	COLD ROLL STEEL			
	TYPE & TEMPER			
	HEAT TREAT. SPEC.			
	FINISH & SPEC. NO.			

<i>L. J. Gabel</i>		<i>PJM</i>
DRAWN	ELEC. DES. APP.	MECH. DES. APP.
JAD. 11/15/52	FINAL APPROVAL	
CHECKED	MS-160	B