

IF IT IS FOUND DESIRABLE TO CHANGE ANY TOLERANCE OR OTHER DETAIL SPECIFIED ON THIS DRAWING NOTIFY THE PURCHASER PROMPTLY.

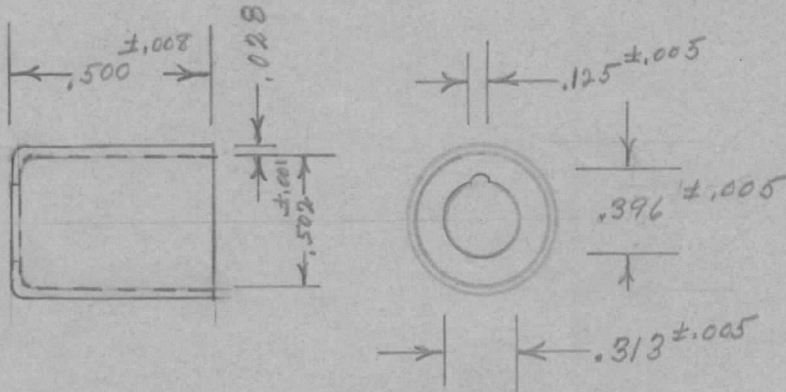
**RELEASED**

MS-146

MAXIMUM ALLOWABLE TOLERANCES HAVE BEEN DETERMINED AND DEVIATIONS WILL BE CAUSE FOR REJECTION. REMOVE ALL BURRS AND SHARP EDGES

USED ON

MODEL	PROJECT NO.	ASS'Y. NO.	DATE
RTB	158	A-169	10-7-52



UNLESS OTHERWISE SPECIFIED  
DIMENSIONS ARE IN INCHES AND INCLUDE  
CHEMICALLY APPLIED OR PLATED FINISHES

DECIMALS	FRACTIONS	TOLERANCES	ANGLES
.X ±.05	± 1/64		
.XX ±.01			± 0° 30'
.XXX ±.005			

CUT HERE  
GUARANTEED  
2-66

Ref: Ward Leonard Electric Co. Part #25211-1

REQ.	ITEM	PART NO.	DESCRIPTION	SYMBOL
		#21 GA. (.028)	THE TECHNICAL MATERIEL CORP. MAMARONECK, NEW YORK	
		STOCK SIZE		
		Soft Brass	FERRULE	
		MATERIAL WEIGHT PER PC.		
		TYPE & TEMPER		
		HEAT TREAT. SPEC.		
		FINISH & SPEC. NO.		

ISSUE	ITEM	CHANGED FROM	DATE	CN. NO.	DRAFTS	CHECKER	ENG. APP.

TOLERANCES	SCALE
ALL OTHERS DEC. DIM. ± FRAC. DIM. ± ANGULAR DIM. ±	DRILL, PUNCH, COMMERCIAL STOCK SIZES AND MANUFACTURERS TOLERANCES ARE NOT INCLUDED.

DRAWN: [Signature]  
ELEC. DES. APP.: [Signature]  
MECH. DES. APP.: [Signature]  
CHECKED: [Signature]  
FINAL APPROVAL: [Signature]  
MS-146