

IF IT IS FOUND DESIRABLE TO CHANGE ANY TOLERANCE OR OTHER DETAIL SPECIFIED ON THIS DRAWING NOTIFY THE PURCHASER PROMPTLY.

MAXIMUM ALLOWABLE TOLERANCES HAVE BEEN DETERMINED AND DEVIATIONS WILL BE CAUSE FOR REJECTION. REMOVE ALL BURRS AND SHARP EDGES

UNLESS OTHERWISE SPECIFIED DIMENSIONS ARE IN INCHES AND INCLUDE CHEMICALLY APPLIED OR PLATED FINISHES

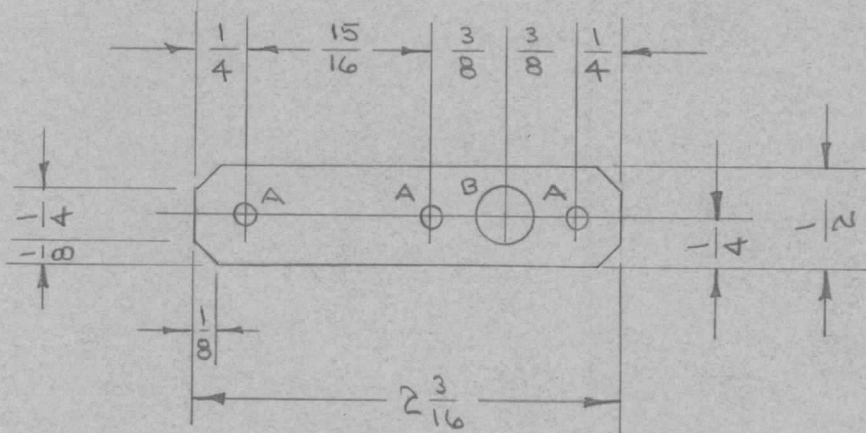
DECIMALS	FRACTIONS
.X ± .05	± 1/64
.XX ± .01	ANGLES
.XXX ± .005	± 0° 30'

CUT HERE GUARANTEED 2-66

MS-141 A

USED ON

MODEL	PROJECT NO.	ASS'Y. NO.	DATE
DMK-4	140	A-150	9-18-52



A - 9/64 (.140) D. 3 HOLES REQ.
 B - 5/16 (.312) D. 1 HOLE REQ.

REQ.	ITEM	PART NO.	DESCRIPTION	SYMBOL
		.032	THE TECHNICAL MATERIEL CORP. MAMARONECK, NEW YORK	
		STOCK SIZE		
		ALUMINUM	ARM, COUPLING	
		MATERIAL		
		24S T3		
		TYPE & TEMPER	C.D.D. 9-18-52	
		HEAT TREAT. SPEC.	DRAWN	ELEC. DES. APP.
		S404-IRIDITE	71.8.C.	MECH. DES. APP.
		FINISH & SPEC. NO.	CHECKED	FINAL APPROVAL
			SUPERCEDES AMS 103	MS-141 A

ISSUE	ITEM	CHANGED FROM	DATE	CN. NO.	DRAFTS	CHECKER	ENG. APP.
A	1	6404 IRIDITE WAS S101 CAUSTIC DIP	12-7 59	1001	φ		EMN

TOLERANCES	SCALE	DRILL, PUNCH, COMMERCIAL STOCK SIZES AND MANUFACTURERS TOLERANCES ARE NOT INCLUDED.
DEC. DIM. ± FRAC. DIM. ± 1/64 ANGULAR DIM. ±	11	