

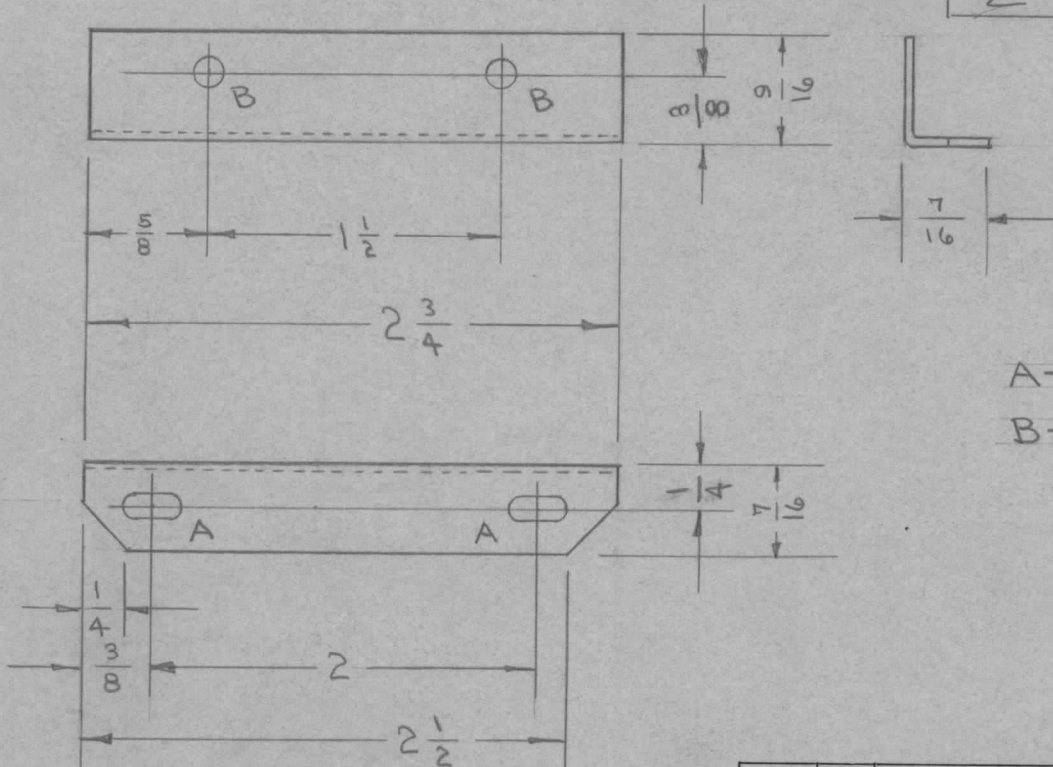
IF IT IS FOUND DESIRABLE TO CHANGE ANY TOLERANCE OR OTHER DETAIL SPECIFIED ON THIS DRAWING NOTIFY THE PURCHASER PROMPTLY.

RELEASED

MS-136 B

MAXIMUM ALLOWABLE TOLERANCES HAVE BEEN DETERMINED AND DEVIATIONS WILL BE CAUSE FOR REJECTION. REMOVE ALL BURRS AND SHARP EDGES

| REQ. PER UNIT | USED ON | | | |
|---------------|---------|-------------|------------|----------|
| | MODEL | PROJECT NO. | ASS'Y. NO. | DATE |
| 2 | LFA | 109 | A-147 | 10-21-57 |
| 2 | XFK | | A-600 | |
| 2 | 775-3 | | | 9-21-60 |



A-9/64 X 9/32 SLOT. 2 REQUIRED
 B-11/64 (.171) D. 2 HOLES REQUIRED

UNLESS OTHERWISE SPECIFIED
 DIMENSIONS ARE IN INCHES AND INCLUDE
 CHEMICALLY APPLIED OR PLATED FINISHES

| DECIMALS | FRACTIONS |
|-------------|-----------|
| .X ± .05 | ± 1/64 |
| .XX ± .01 | ANGLES |
| .XXX ± .005 | ± 0° 30' |

TOLERANCES

CUT HERE
 GUARANTEED
 2-56

| REQ. | ITEM | PART NO. | DESCRIPTION | SYMBOL |
|------|------|--------------------|------------------------------|--------|
| | | 1051 | THE TECHNICAL MATERIEL CORP. | |
| | | STOCK SIZE | MAMARONECK, NEW YORK | |
| | | ALUMINUM | BRACKET, XTAL OVEN | |
| | | MATERIAL | | |
| | | WEIGHT PER PC. | | |
| | | 50525 H32 | | |
| | | TYPE & TEMPER | C.D.D. 9-11-57 | |
| | | | A.J.J. | |
| | | | WOC 10/20 | |
| | | HEAT TREAT. SPEC. | | |
| | | 5-404-IRIDITE | | |
| | | FINISH & SPEC. NO. | SUPERCEDES | |
| | | | AMS-113 | |
| | | | MS-136 | B |

| | | | | | | | |
|------------|----------------|---|------------|---------|--------|---------|-----------|
| B | 1 | S404-IRIDITE WAS S101-CAUSTIC DIP | 12-7 59 | 1001 | P | EMN | |
| A | 1 | WAS 4 REQ ON XFK | 4/21/57 | 1 | P/S. | WOC | |
| ISSUE | ITEM | CHANGED FROM | DATE | CN. NO. | DRAFTS | CHECKER | ENG. APP. |
| TOLERANCES | | SCALE FULL. | | | | | |
| ALL OTHERS | DEC. DIM. ± | DRILL, PUNCH, COMMERCIAL STOCK SIZES AND MANUFACTURERS TOLERANCES ARE NOT INCLUDED. | | | | | |
| | FRAC. DIM. ± | | | | | | |
| | ANGULAR DIM. ± | | | | | | |