

IF IT IS FOUND DESIRABLE TO CHANGE ANY TOLERANCE OR OTHER DETAIL SPECIFIED ON THIS DRAWING NOTIFY THE PURCHASER PROMPTLY.

MS-120

MAXIMUM ALLOWABLE TOLERANCES HAVE BEEN DETERMINED AND DEVIATIONS WILL BE CAUSE FOR REJECTION. REMOVE ALL BURRS AND SHARP EDGES

REQ. PER UNIT

USED ON

MODEL

PROJECT NO.

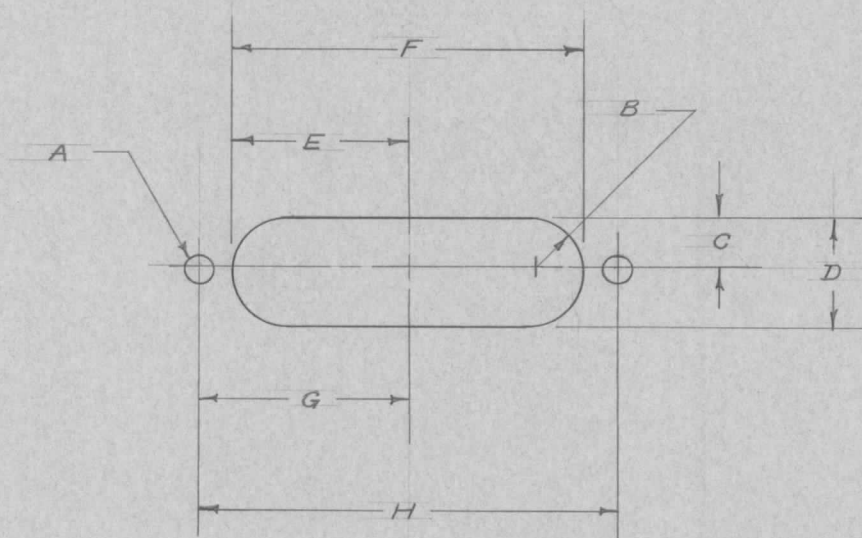
ASS'Y. NO.

DATE

FFR

104

8-15-55



A - $\frac{5}{32}$ (.156) D. 2 HOLES
 B - .272 R.
 C - .272
 D - .544
 E - .850
 F - 1.700
 G - 1.062
 H - 2.125

NOTE:

PUNCH & DIE TO BE USED FOR .064 GA. 52S-H32 ALUM.

UNLESS OTHERWISE SPECIFIED DIMENSIONS ARE IN INCHES AND INCLUDE CHEMICALLY APPLIED OR PLATED FINISHES

DECIMALS	FRACTIONS	TOLERANCES
.X ± .05	± 1/64	
.XX ± .01	ANGLES	
.XXX ± .005	± 0° 30'	

REQ.	ITEM	PART NO.	DESCRIPTION	SYMBOL
			THE TECHNICAL MATERIEL CORP.	
STOCK SIZE			MAMARONECK, NEW YORK	
			CHASSIS CUT OUT,	
MATERIAL			PUNCH & DIE	
			TYPE & TEMPER	AB 8-15-55
			DRAWN	WDC
			ELEC. DES. APP.	
			MECH. DES. APP.	WDC
TOLERANCES			CHECKED	FINAL APPROVAL
SCALE			MS-120	
ALL OTHERS				
DEC. DIM. ±				
FRAC. DIM. ±				
ANGULAR DIM. ±				
DRILL, PUNCH, COMMERCIAL STOCK SIZES AND MANUFACTURERS TOLERANCES ARE NOT INCLUDED.				
FINISH & SPEC. NO.				

+	+	REDRAWN NO CHANGE	8/15/55	#	16	JAL	
ISSUE	ITEM	CHANGED FROM	DATE	CN. NO.	DRAFTS	CHECKER	ENG. APP.