

IF IT IS FOUND DESIRABLE TO CHANGE ANY TOLERANCE OR OTHER DETAIL SPECIFIED ON THIS DRAWING NOTIFY THE PURCHASER PROMPTLY.

STANDARD DRAWING

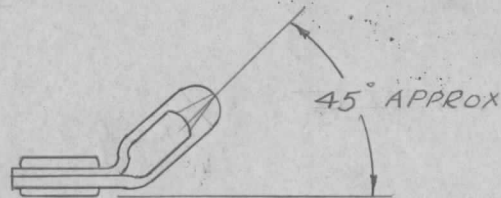
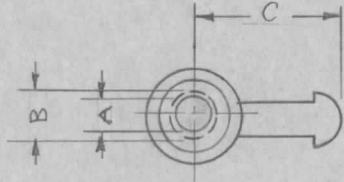
MS-105 A

MAXIMUM ALLOWABLE TOLERANCES HAVE BEEN DETERMINED AND DEVIATIONS WILL BE CAUSE FOR REJECTION. REMOVE ALL BURRS AND SHARP EDGES

Quan Req.	USED ON			
	MODEL	PROJECT NO.	ASS'Y. NO.	DATE
2	BAC-1			
2	BAC-1-S-20			

STANDARD

OFFSET



C-DIMENSION PRIOR TO BEND (OFFSET)

TMC NO.	CAT. NO.	HOLE SIZE IN EYELET	HOLE SIZE WITHOUT EYELET	COUPLING LENGTH	USED ON CHAIN SIZE
MS-105-1	6-A	—	.167	13/32"	NO. 6
MS-105-2	6-AD	.130	—	13/32"	NO. 6
MS-105-3	10-A	.125	.167	1/2"	NO. 10
MS-105-4	10-AN	—	.230	9/16"	NO. 10
MS-105-5	10-AD	.193	—	9/16"	NO. 10
MS-105-6	13-AN	.193	.230	11/16"	NO. 13
MS-105-7	20-A	.250	.302	1-1/32"	NO. 20

TYPE DES. TO BE IN FOLLOWING FORM

MS-105-1-S-O
 TMC-NO STYLE
 S- STANDARD
 O- OFFSET

REF. BEAD CHAIN MFG. CO.

REQ.	ITEM	PART NO.	DESCRIPTION	SYMBOL
		#	THE TECHNICAL MATERIEL CORP. MAMARONECK, NEW YORK	
		STOCK SIZE		
		BRASS	COUPLING, CHAIN	
		MATERIAL	WEIGHT PER PC.	
		#		
		TYPE & TEMPER	P.B. 9-16-54	WDE
		#	DRAWN	ELEC. DES. APP. MECH. DES. APP.
			COB	WDE
		HEAT TREAT. SPEC.	CHECKED	FINAL APPROVAL
		NICKEL PLATE		MS-105 A
		FINISH & SPEC. NO.		

A	1	REDRAWN- STYLE ADDED	9-17-54	1	P.B.	COB	WDE
ISSUE	ITEM	CHANGED FROM	DATE	CN. NO.	DRAFTS	CHECKER	ENG. APP.

TOLERANCES		SCALE
ALL OTHERS	DEC. DIM. ± .005 FRAC. DIM. ± 1/64 ANGULAR DIM. ±	DRILL, PUNCH, COMMERCIAL STOCK SIZES AND MANUFACTURERS TOLERANCES ARE NOT INCLUDED.