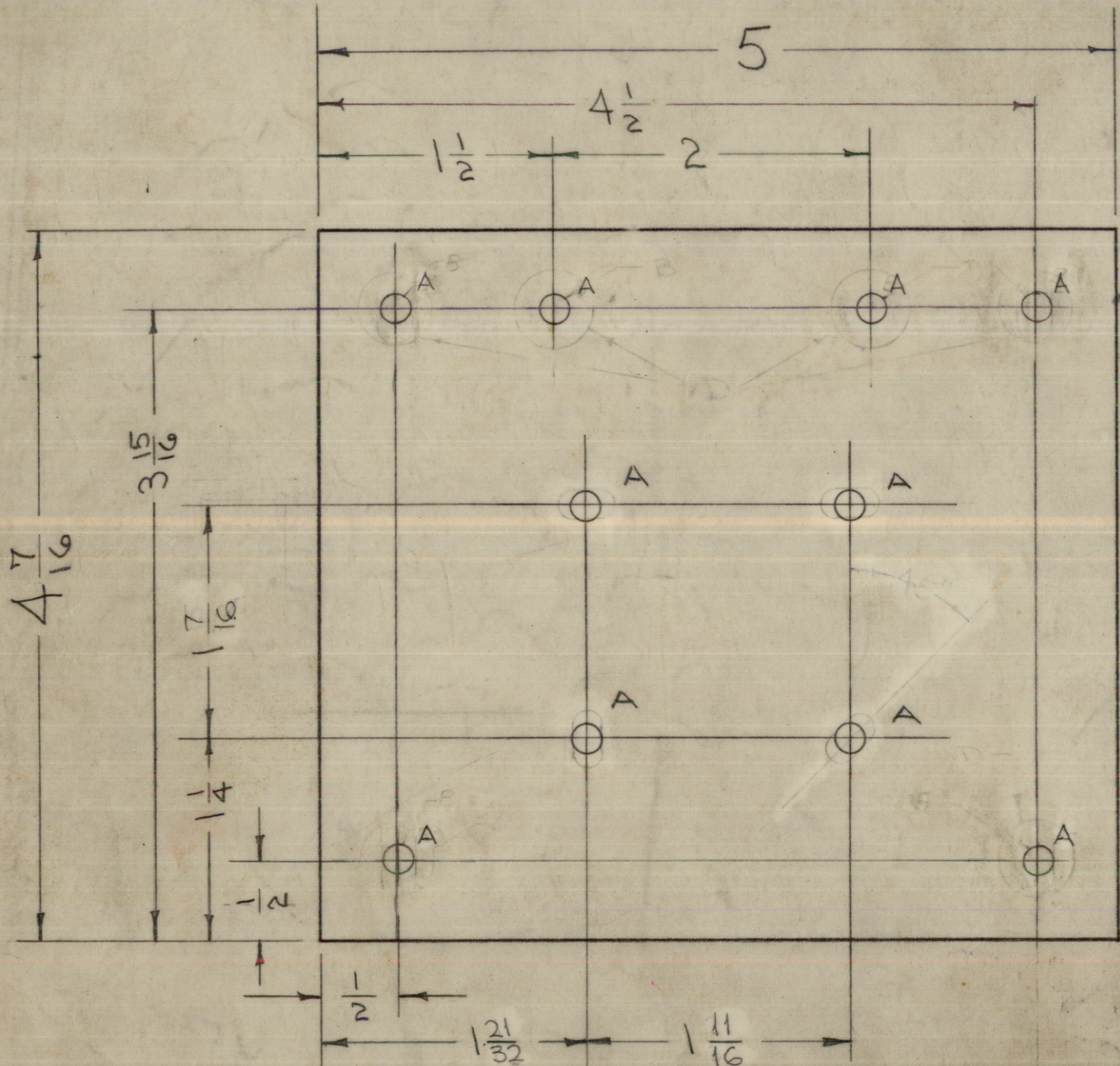


IF IT IS FOUND DESIRABLE TO CHANGE ANY TOLERANCE OR OTHER DETAIL SPECIFIED ON THIS DRAWING NOTIFY THE PURCHASER PROMPTLY.

MAXIMUM ALLOWABLE TOLERANCES HAVE BEEN DETERMINED AND DEVIATIONS WILL BE CAUSE FOR REJECTION. REMOVE ALL BURRS AND SHARP EDGES

MS-100 L



A - 1/16 x 1/16 SLOTS 4 SLOTS REQ.  
 A - 3/16 (.187) D. 10-HOLES REQ.  
 C - 1/16 (.062) D. 4 HOLES REQ.  
 D - 1/2 (.500) D. C-BORE SLIGHTLY TO

NOTICE TO PERSONS RECEIVING THIS DRAWING

THE TECHNICAL MATERIEL CORPORATION claims proprietary right in the material disclosed hereon. This drawing is issued in confidence for engineering information only and may not be reproduced or used to manufacture anything shown hereon without permission from THE TECHNICAL MATERIEL CORPORATION to the user. This drawing is loaned for mutual assistance and is subject to recall at any time.

Property of:

THE TECHNICAL MATERIEL CORPORATION  
 MAMARONECK, NEW YORK

NOTE - FINISH (ONLY) (SPECIFY UNFINISHED)  
 S-107 PAINT  
 B-115 ENAMEL  
 A-115 SMOOTH GREY ENAMEL

ISSUE	ITEM	CHANGED FROM	DATE	CN. NO.	DRAFTS	CHECKER	ENG. APP.	DESCRIPTION	DATE	NO.	BY	CHKD.	APP.
H	1	"A" SLOTS WERE 1/16 x 1/32	9/25/56	8	J	WJC	J	S-404 WAS S-101	12/14/56	1001	WJC	EMN	
G	1	RAC-7A WAS RAC-7 S-107 ADDED	7/16/56	7	K	WJC	WJC	UPDATED DNG	12/12/56	10591	WJC	WJC	
F	2	S-114, S-115 DELETED	2-20-56	6	L	WJC	WJC	1-7/16 WAS 1-5/32, 1-21/32 WAS 1-11/16	7-29-56	11945	SRG	WJC	
F	1	C-BORE ON "B" HOLES DELETED						1-11/16 WAS 1-21/32					
E	1	D HOLES WERE 3 REQ.	12/12/55	5	M	WJC	WJC						
D	2	"B" HOLES WERE 2 REQ.	9-27-55	4	N	WJC	WJC						
D	1	"C" SLOTS DELETED											
C	1	"A" HOLES CHGD. RE-DRAWN	8/20/53	3	O	WJC	WJC						

TOLERANCES	SCALE:
ALL OTHERS DEC. DIM. ± FRAC. DIM. ± ANGULAR DIM. ±	DRILL, PUNCH, COMMERCIAL STOCK SIZES AND MANUFACTURERS TOLERANCES ARE NOT INCLUDED.

MODEL	PROJECT NO.	ASS'Y. NO.	DATE
RAC-3	450	A-1463	10-13-57
RAC-7A	230	A-1354	10-30-56
RAC-7			3-14-56
RAC-18		A-1137	12-2-55
BAC-1-S-1.5		A-527	9-15-53
BAC-1		A-191	10-17-52
RAC		A-105	6-5-52

REQ. ITEM	PART NO.	DESCRIPTION	SYMBOL
	.064	THE TECHNICAL MATERIEL CORP. MAMARONECK, NEW YORK	
	STOCK SIZE		
	ALUMINUM	MOUNTING PLATE	
	MATERIAL		
	WEIGHT PER PC.		
	525-H32		
	TYPE & TEMPER		
	#		
	HEAT TREAT. SPEC.		
	S404 YELLOW IRIDITE		
	FINISH & SPEC. NO.		

C.D.D. 8-20-53  
 DRAWN: WJC  
 ELEC. DES. APP.: WJC  
 MECH. DES. APP.: WJC  
 CHECKED: WJC  
 FINAL APPROVAL: WJC  
 MS-100 L