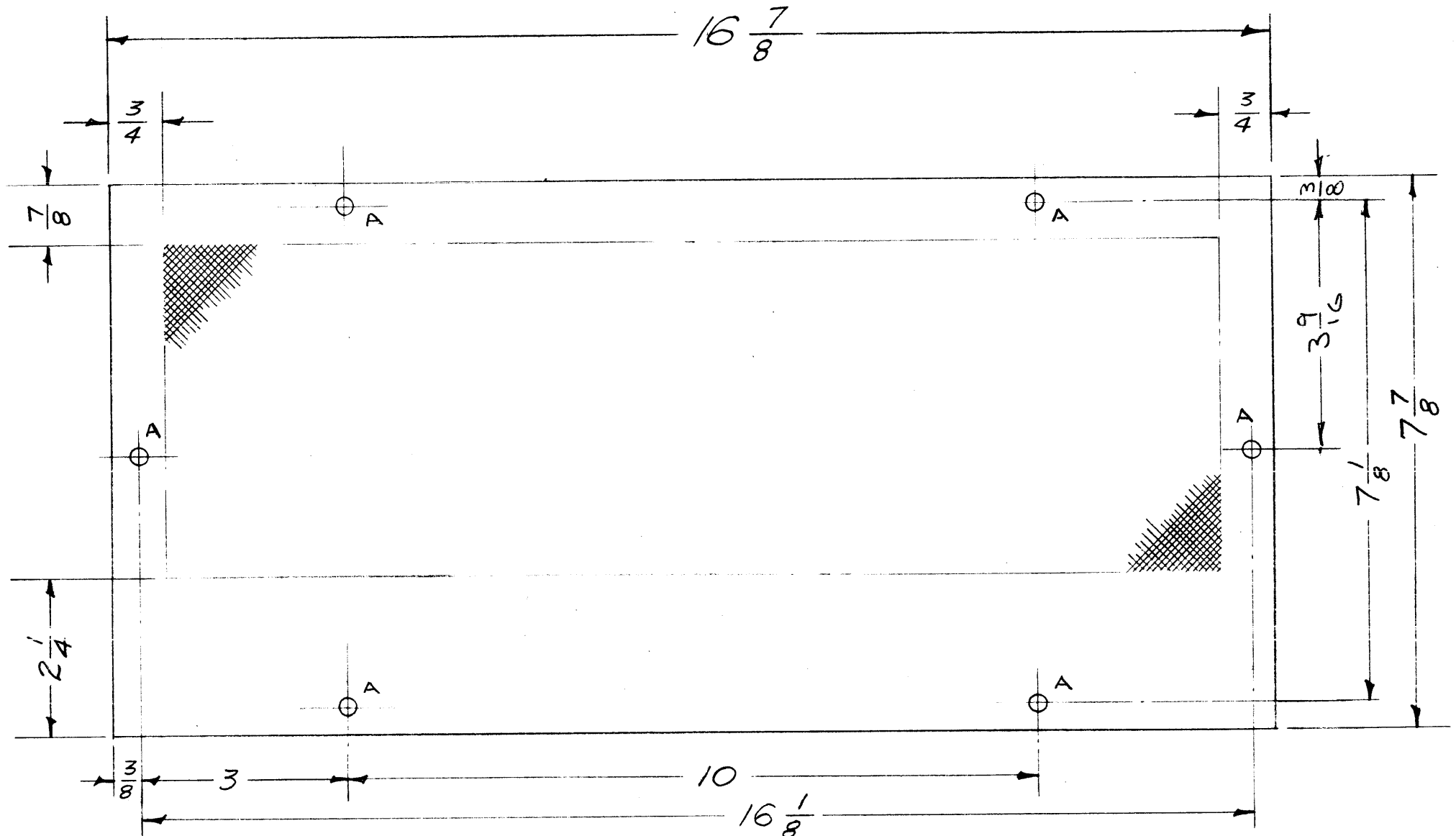


MS-1015 A



REPRODUCED FROM ORIGINAL DRAWING
 THE TECHNICAL MATERIEL CORPORATION claims proprietary right in the material disclosed hereon. This drawing is issued in confidence for engineering information only and may not be reproduced or used to manufacture anything shown hereon without permission from THE TECHNICAL MATERIEL CORPORATION to the user. This drawing is loaned for mutual assistance and is subject to recall at any time.

Property of:
 THE TECHNICAL MATERIEL CORPORATION
 MAMARONECK, NEW YORK

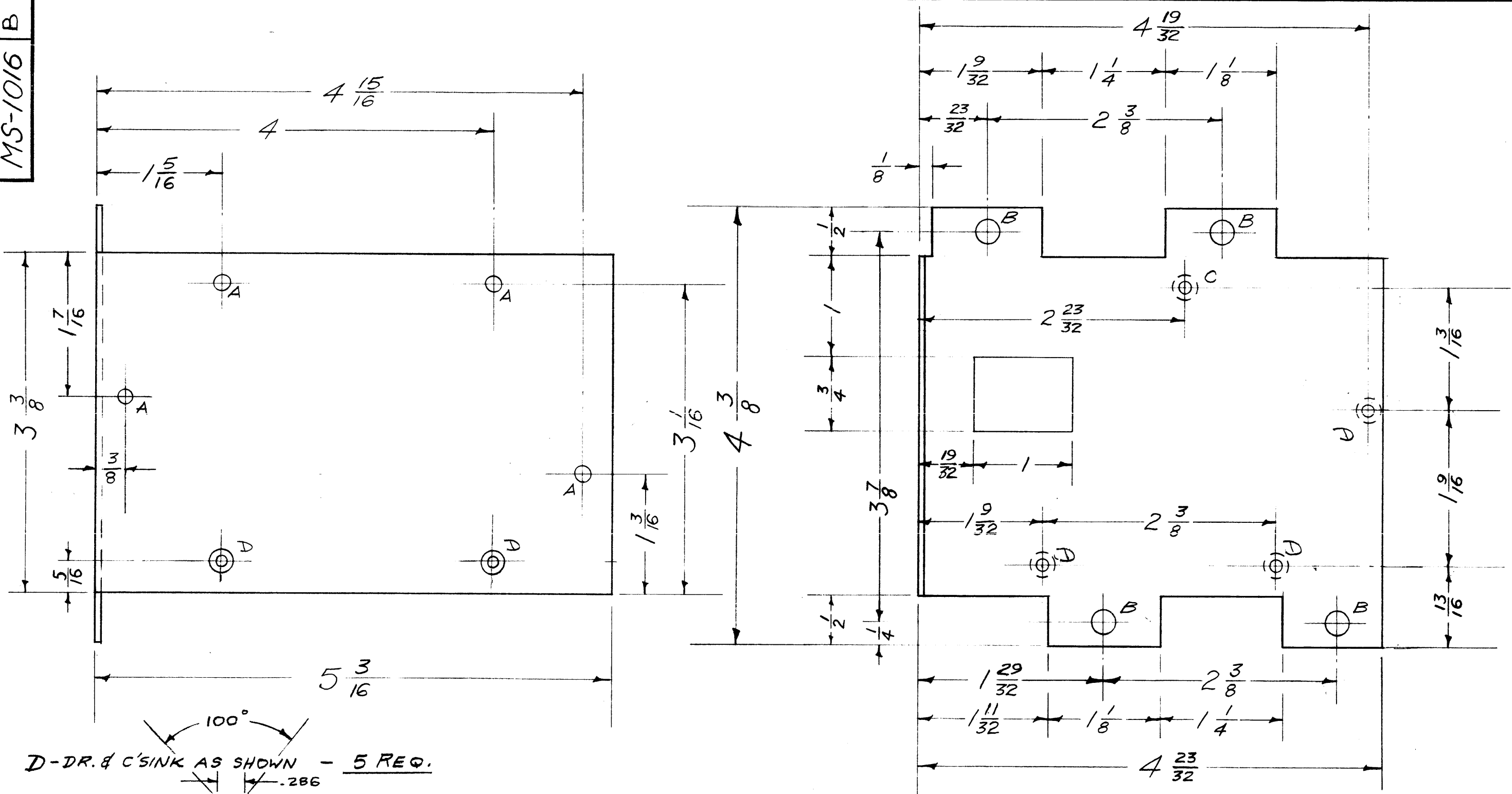
A = 1/4" DIA 6 HOLES

PERFORATION - .072 DIA. HOLES ON 1/8 CENTERS.

ISSUE	ITEM	CHANGED FROM	DATE	CH. NO.	DRAFTS	CHECKER	ENG. APP.
A	1	S-404 WAS S-101	12/14/54	1001	#0		EMN
TOLERANCES		SCALE: 1/2					
DEC. DIM. ±		MAXIMUM ALLOWABLE TOLERANCES HAVE BEEN DETERMINED AND ANY DEVIATIONS WILL BE CAUSE FOR REJECTION.					
FRAC. DIM. ± 1/64		REMOVE ALL BURRS AND SHARP EDGES					
ANGULAR DIM. ±							

REQ. PER UNIT	MODEL	PROJECT NO.	ASS'Y. NO.	DATE
1	TST	638		1-15-57
1	TSR	638		1-15-57
USED ON				

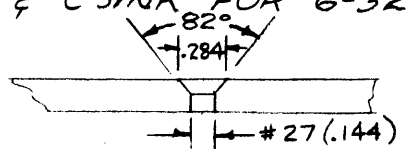
REQ. ITEM	PART NO.	DESCRIPTION	SYMBOL
.051 THK. STOCK SIZE		THE TECHNICAL MATERIEL CORP. MAMARONECK, NEW YORK	
ALUMINUM PERFORATED MATERIAL		COVER, BOTTOM	
5052-H32		1-15-57	
TYPE & TEMPER HEAT TREAT. SPEC.		DRAWN	CHECKED
S-404 YELLOW IRIDITE		FINAL APPROVAL	
FINISH & SPEC. NO.		ELEC. DES. APP.	MECH. DES. APP.
		MS-1015 A	



D-DR. & C'SINK AS SHOWN - 5 REQ.

A - $\frac{5}{32}$ (.156) D. 4 REQ.
 B - $\frac{1}{4}$ (.250) D. 4 REQ.

C - DRILL & C'SINK FOR 6-32 FLAT HD. SCREW

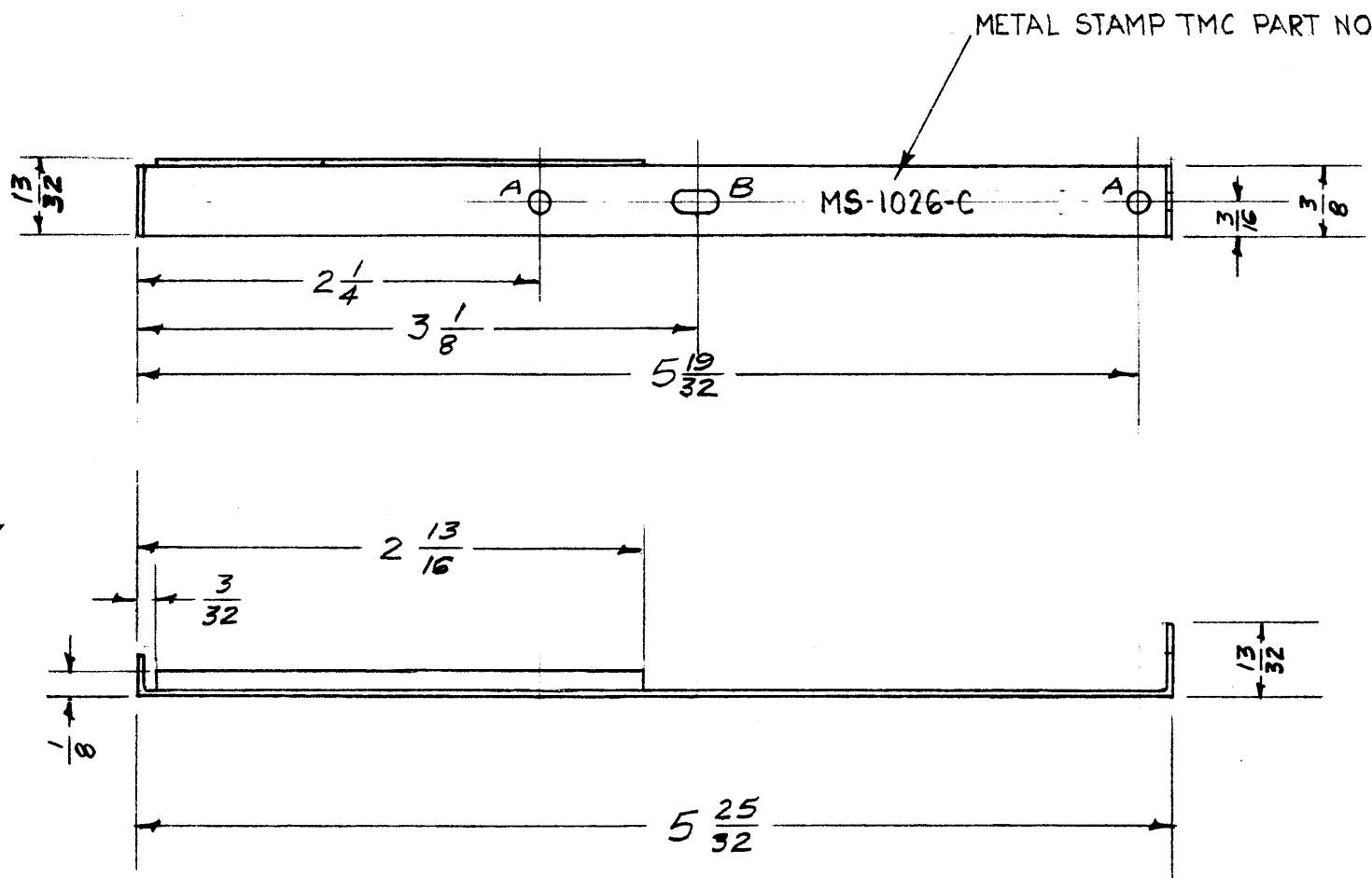


ISSUE	ITEM	CHANGED FROM	DATE	CH. NO.	DRAFTS	CHECKER	ENG. APP.
B	1	S-404 WAS S-101	12/14/54	1001	RB		EMN
A	2	"A" Hole diam. was 6	2/15/57	1	16	J.H.D.	J.P.
	1	FIVE "D" HOLES ADDED					
		DIMENSIONS CHANGED					

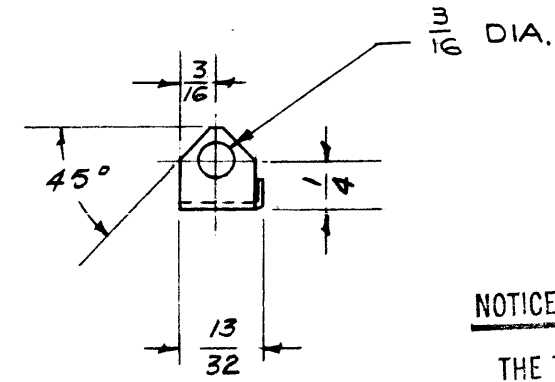
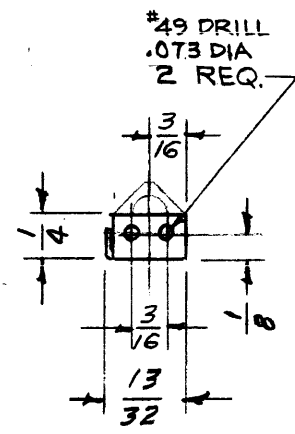
REQ. PER UNIT	MODEL	PROJECT NO.	ASS'Y. NO.	DATE
1	TRU	638	A-1393 (2)	1-11-57
1	TTU	638	A-1393 (2)	1-11-57

REQ. ITEM	PART NO.	DESCRIPTION	SYMBOL
	.064	THE TECHNICAL MATERIEL CORP.	
	STOCK SIZE	MAMARONECK, NEW YORK	
	ALUMINUM	COVER, MOUNTING	
	MATERIAL		
5052-H32		16 1-11-57	J.H.D. J.P.
	TYPE & TEMPER	DRAWN	CHECKED
	HEAT TREAT. SPEC.		FINAL APPROVAL
	5-404 YELLOW IRIDITE		MS-1016 B
	FINISH & SPEC. NO.	ELEC. DES. APP.	MECH. DES. APP.

MS-1026 C



A - $\frac{1}{8}$ (.125) D. 2 Req.
 B - $\frac{1}{8} \times \frac{1}{4}$ Slot 1 Req.



NOTICE TO PERSONS RECEIVING THIS DRAWING

THE TECHNICAL MATERIEL CORPORATION claims proprietary right in the material disclosed herein. This drawing is issued in confidence for engineering information only and may not be reproduced or used to manufacture anything shown herein without permission from THE TECHNICAL MATERIEL CORPORATION to the user. This drawing is loaned for mutual assistance and is subject to recall at any time.

Property of:
 THE TECHNICAL MATERIEL CORPORATION
 MAMARONECK, NEW YORK

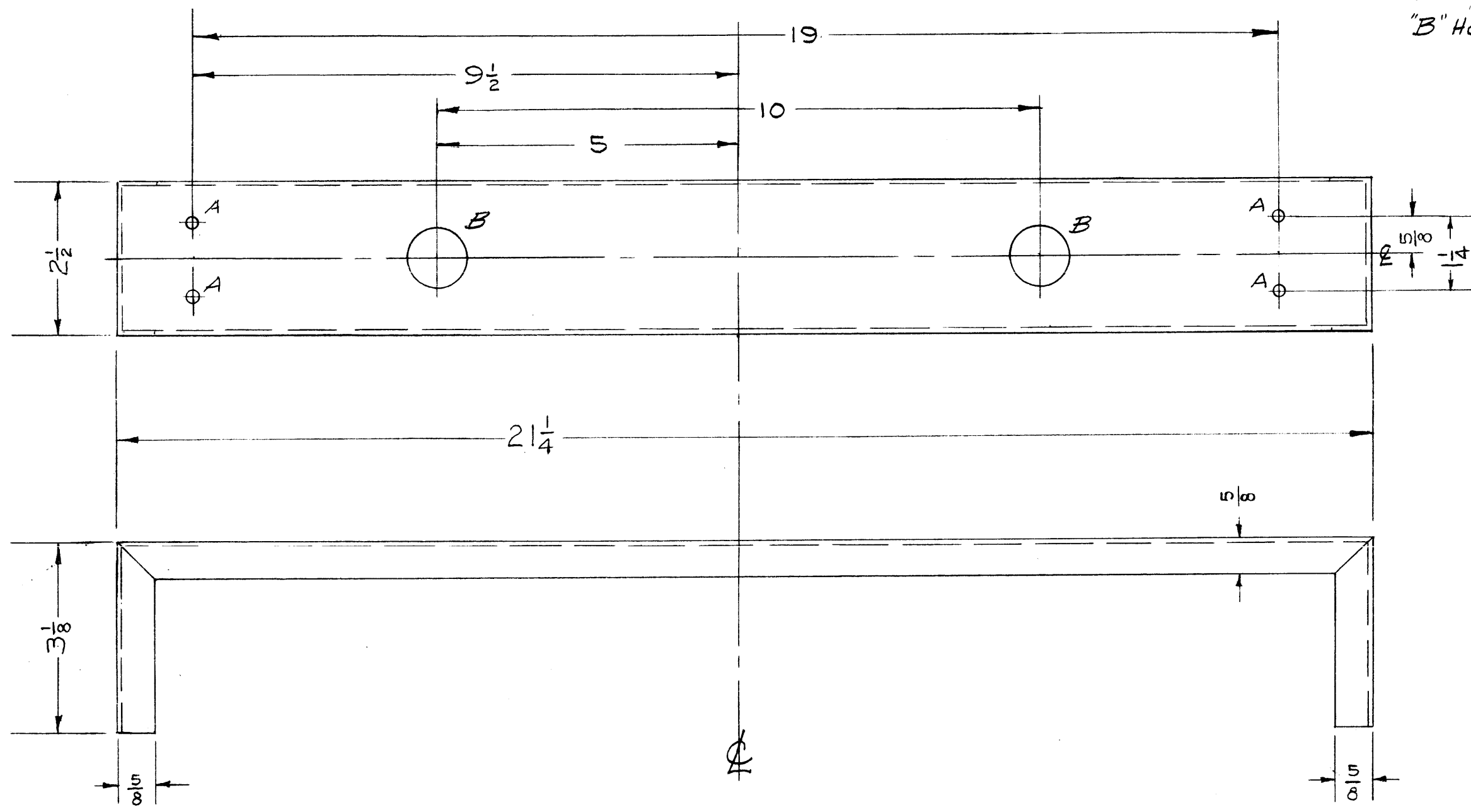
C	1	(2) .073 HOLES WERE $\frac{1}{16}$ DIA	3-6-63	8372	RC	JW8	[Signature]
B	1	Mat'l. THKNSS WAS .032	3-30-61	4526	JDM	JCB	[Signature]
A	1	S-404 WAS S-101	12/14/59	1001	AB	EMN	[Signature]
ISSUE	ITEM	CHANGED FROM	DATE	CH. NO.	DRAFTS	CHECKER	ENG. APP.
TOLERANCES			SCALE:				
DEC. DIM. \pm			MAXIMUM ALLOWABLE TOLERANCES HAVE BEEN DETERMINED AND ANY DEVIATIONS WILL BE CAUSE FOR REJECTION. REMOVE ALL BURRS AND SHARP EDGES				
FRAC. DIM. \pm							
ANGULAR DIM. \pm							

1	RTF-2	MAS/OSC		11-10-58
1	RTF		A-1236	2-13-57
1	PMO-1,2		A-1236	2-13-57
1	VOX-1,2		A-1236	2-13-57
REQ. PER UNIT	MODEL	PROJECT NO.	ASS'Y. NO.	DATE
USED ON				

REQ. ITEM	PART NO.	DESCRIPTION	SYMBOL
	.040 THK.	THE TECHNICAL MATERIEL CORP.	
	STOCK SIZE	MAMARONECK, NEW YORK	
	ALUMINUM	BRACKET, THERMOSTAT	
	MATERIAL		
5052-H32	#	162-13-57	[Signature]
TYPE & TEMPER	HEAT TREAT. SPEC.	DRAWN	CHECKED
S-404 YELLOW IRIDITE		[Signature]	[Signature]
FINISH & SPEC. NO.	ELEC. DES. APP.	MECH. DES. APP.	
			MS-1026 C

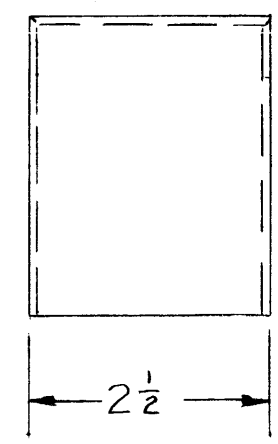
MS-1041 B

"A" HOLE $\frac{13}{64}$ D. 4 REQ.
 "B" HOLE 1 D. 2 REQ.



NOTICE TO PERSONS RECEIVING THIS DRAWING
 THE TECHNICAL MATERIEL CORPORATION claims proprietary right in the material disclosed hereon. This drawing is issued in confidence for engineering information only and may not be reproduced or used to manufacture anything shown hereon without permission from THE TECHNICAL MATERIEL CORPORATION to the user. This drawing is loaned for mutual assistance and is subject to recall at any time.

Property of:
 THE TECHNICAL MATERIEL CORPORATION
 MAMARONECK, NEW YORK



ISSUE	ITEM	CHANGED FROM	DATE	CH. NO.	DRAFTS	CHECKER	ENG. APP.
B	1	FINISH WAS S107 LACQUER	6/9/59	-	PJB	JHQ	[Signature]
A	1	21 1/4 length was 21 3/8	5/20/57	1	KG	JMS	[Signature]

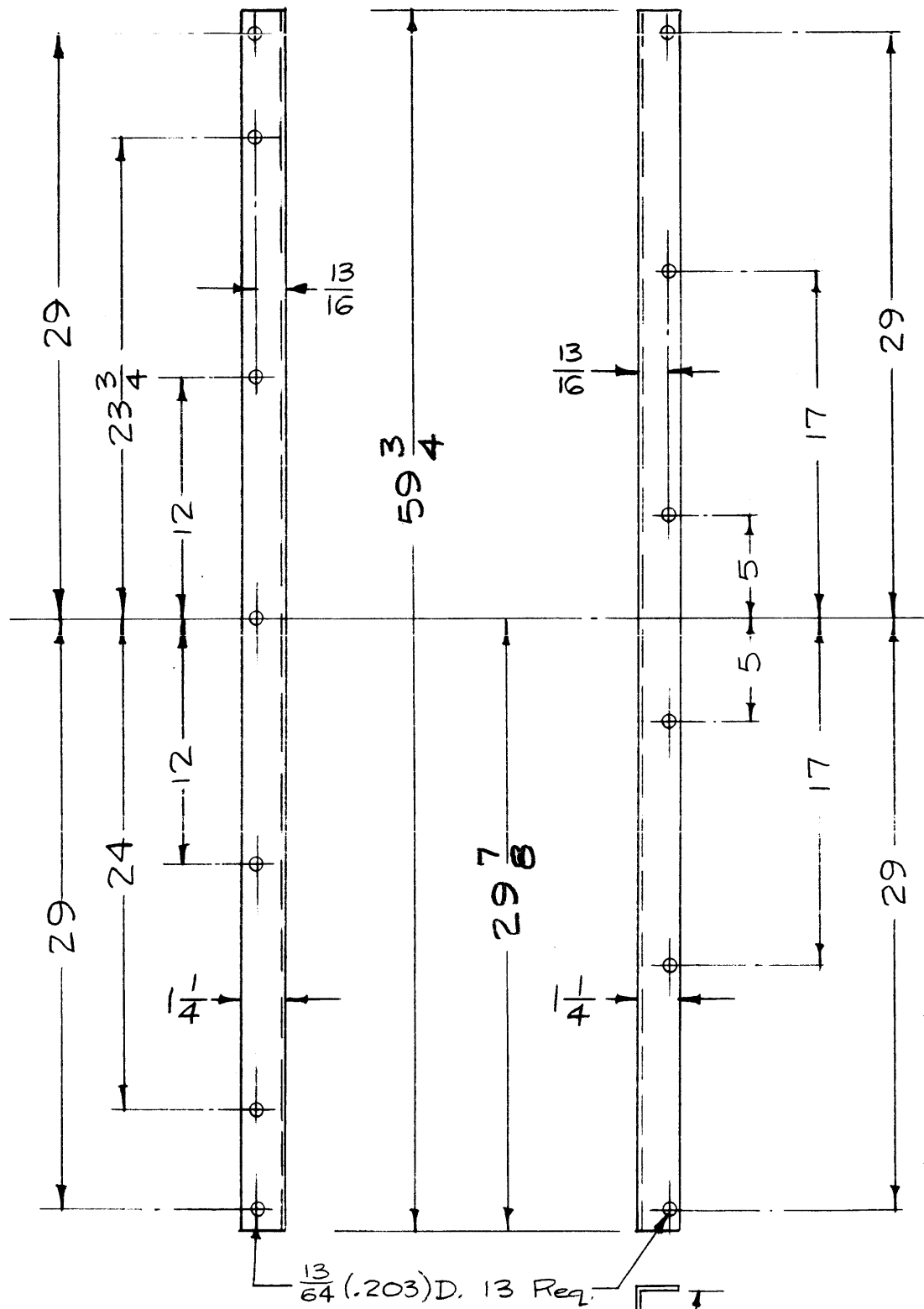
TOLERANCES: DEC. DIM. ±, FRAC. DIM. ±, ANGULAR DIM. ±

SCALE: MAXIMUM ALLOWABLE TOLERANCES HAVE BEEN DETERMINED AND ANY DEVIATIONS WILL BE CAUSE FOR REJECTION. REMOVE ALL BURRS AND SHARP EDGES

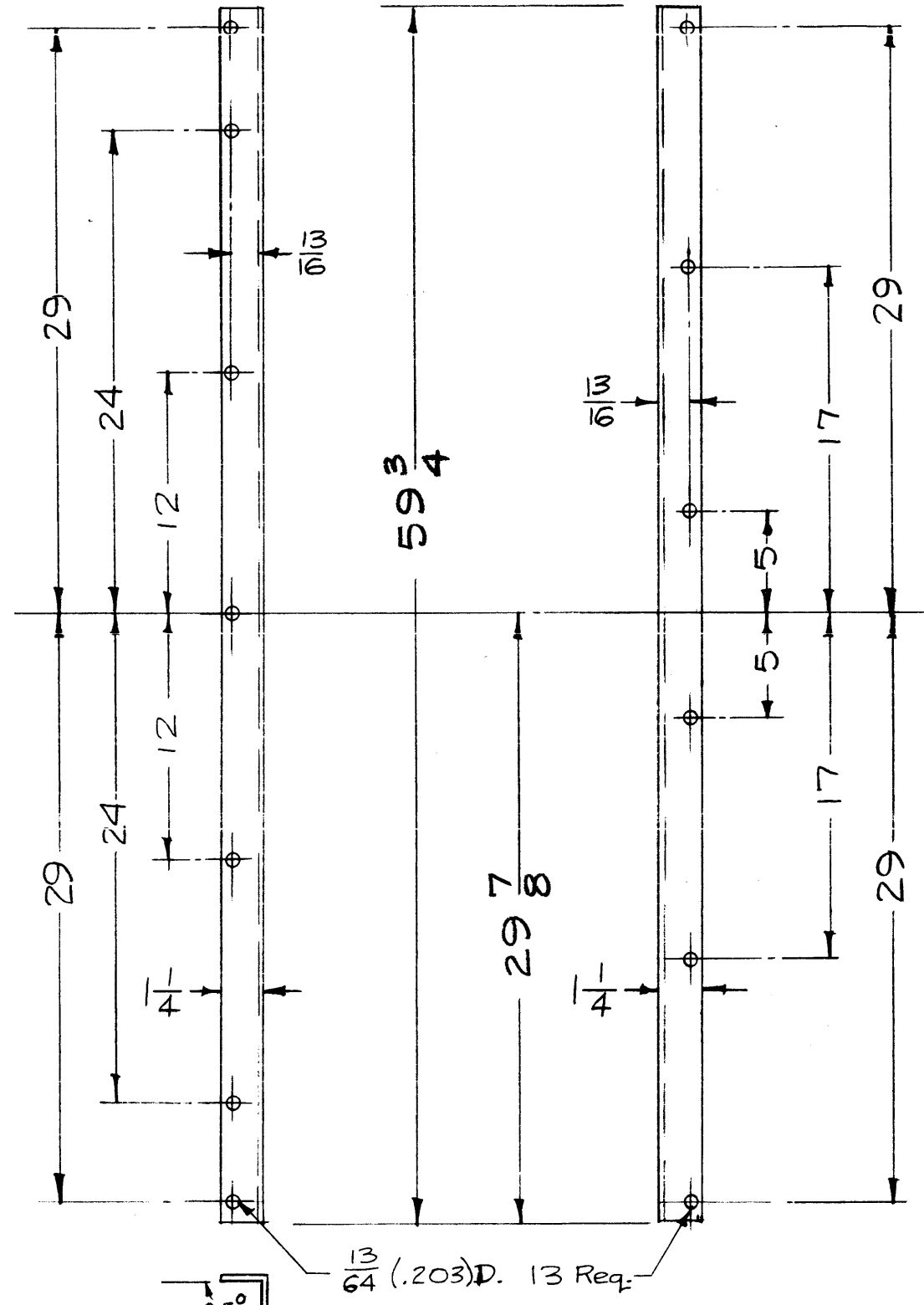
4	TER-5000	A-1422(B)	4-18-57
REQ. PER UNIT	MODEL	PROJECT NO.	DATE
USED ON			

REQ. ITEM	PART NO.	DESCRIPTION	SYMBOL
.081		THE TECHNICAL MATERIEL CORP. MAMARONECK, NEW YORK	
ALUMINUM		PEDESTAL, BOTTOM	
		TER-5000	
5052-H32		4-18-57	65-17-57
		DRAWN	CHECKED
		FINAL APPROVAL	
S404 YELLOW IRIDITE			
		ELEC. DES. APP.	MECH. DES. APP.

MS-1041 B



MS-1052-1
REAR, LEFT



MS-1052-2
REAR Right.

ISSUE	ITEM	CHANGED FROM	DATE	CH. NO.	DRAFTS	CHECKER	ENG. APP.
B	1	3404 (IRIDITE) ADDED	6/9/59	-	HQ		apb
A	1	29 7/8 WAS 30 (CL) 59 3/4 WAS 60 (O/A)	2/1/59	732-16	ASL	(G)	apb
TOLERANCES		SCALE: NONE					
DEC. DIM. ±		MAXIMUM ALLOWABLE TOLERANCES HAVE BEEN DETERMINED AND ANY DEVIATIONS WILL BE CAUSE FOR REJECTION.					
FRAC. DIM. ± 1/64		REMOVE ALL BURRS AND SHARP EDGES					
ANGULAR DIM. ±							

Each	TER-5000-600	A-1431 (8)	5-22-57
REQ. PER UNIT	MODEL	PROJECT NO.	ASS'Y. NO.
			DATE
USED ON			

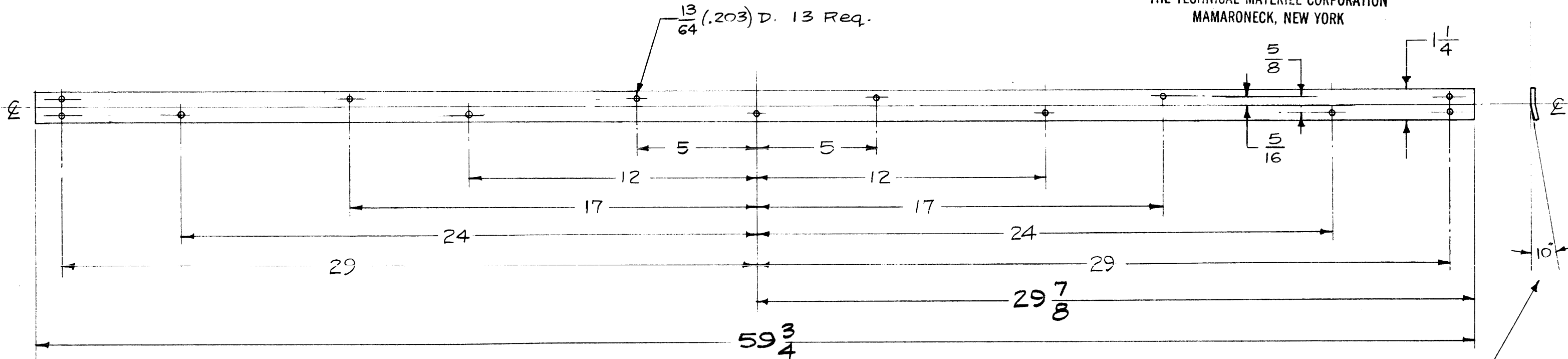
REQ. ITEM	PART NO.	DESCRIPTION	SYMBOL
	.064 THK. STOCK SIZE	THE TECHNICAL MATERIEL CORP. MAMARONECK, NEW YORK	
	ALUMINUM	MOLDING, CORNER, REAR (TER-5000)	
	MATERIAL		
5052 H32		165-22-57	apb
TYPE & TEMPER	HEAT TREAT. SPEC.	DRAWN	CHECKED
3404 IRIDITE 5114 ILLU CHROMATE PRIMER 5115 GRAY ENAMEL			
FINISH & SPEC. NO.		ELEC. DES. APP.	MECH. DES. APP.
			MS-1052 B

MS-1053 B

NOTICE TO PERSONS RECEIVING THIS DRAWING

THE TECHNICAL MATERIEL CORPORATION claims proprietary right in the material disclosed hereon. This drawing is issued in confidence for engineering information only and may not be reproduced or used to manufacture anything shown hereon without permission from THE TECHNICAL MATERIEL CORPORATION to the user. This drawing is loaned for mutual assistance and is subject to recall at any time.

Property of:
THE TECHNICAL MATERIEL CORPORATION
MAMARONECK, NEW YORK



NOTE - BREAK 10° AFTER DRILLING HOLES

FINISH:
 S404 IRIDITE
 S114 ZINC CHROMATE PRIMER
 S115 GRAY ENAMEL

ISSUE	ITEM	CHANGED FROM	DATE	CH. NO.	DRAFTS	CHECKER	ENG. APP.
B	1	S404 (IRIDITE) ADDED	6/9/59	-		JL	
A	1	29 7/8 WAS 30 (CLL) 59 3/4 WAS 60 (O/A)	2/1/59	732	16	JAN 59	

TOLERANCES: DEC. DIM. \pm , FRAC. DIM. \pm , ANGULAR DIM. \pm

SCALE: $1/4$

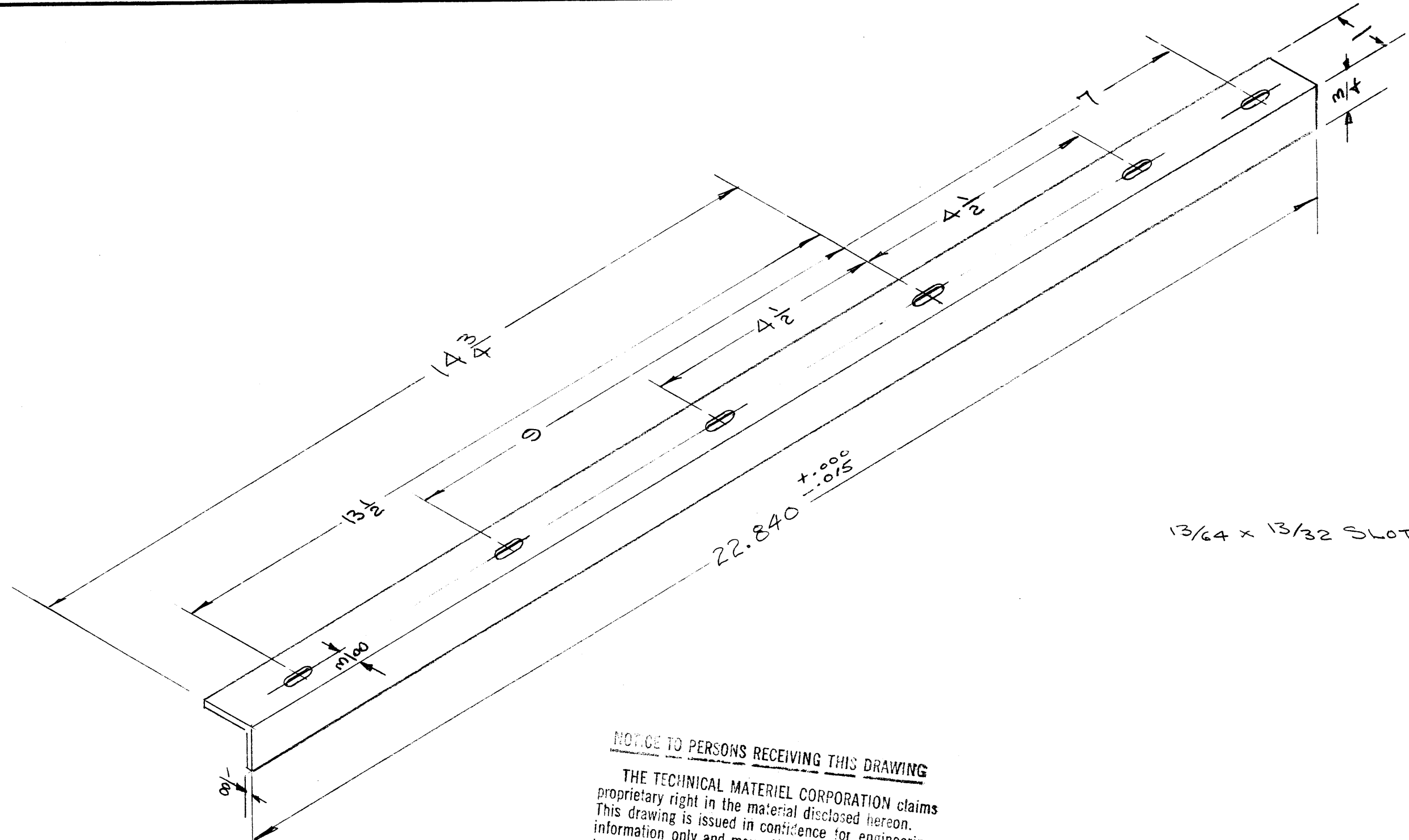
MAXIMUM ALLOWABLE TOLERANCES HAVE BEEN DETERMINED AND ANY DEVIATIONS WILL BE CAUSE FOR REJECTION. REMOVE ALL BURRS AND SHARP EDGES

1	TER-5000-600	A-1431 (8)	
REQ. PER UNIT	MODEL	PROJECT NO.	ASS'Y. NO.
			DATE

USED ON

REQ. ITEM	PART NO.	DESCRIPTION	SYMBOL
	.064 THK.	THE TECHNICAL MATERIEL CORP.	
	STOCK SIZE	MAMARONECK, NEW YORK	
	ALUMINUM	MOLDING, CENTER, REAR	
	MATERIAL	(TER-5000)	
5052-H32		164-30-57	
TYPE & TEMPER	HEAT TREAT. SPEC.	DRAWN	CHECKED
SEE NOTE			
FINISH & SPEC. NO.		ELEC. DES. APP.	MECH. DES. APP.

MS-1053 B



13/64 x 13/32 SLOTS 6 REQ

NOTICE TO PERSONS RECEIVING THIS DRAWING

THE TECHNICAL MATERIEL CORPORATION claims proprietary right in the material disclosed hereon. This drawing is issued in confidence for engineering information only and may not be reproduced or used to manufacture anything shown hereon without permission from THE TECHNICAL MATERIEL CORPORATION to the user. This drawing is loaned for mutual assistance and is subject to recall at any time.

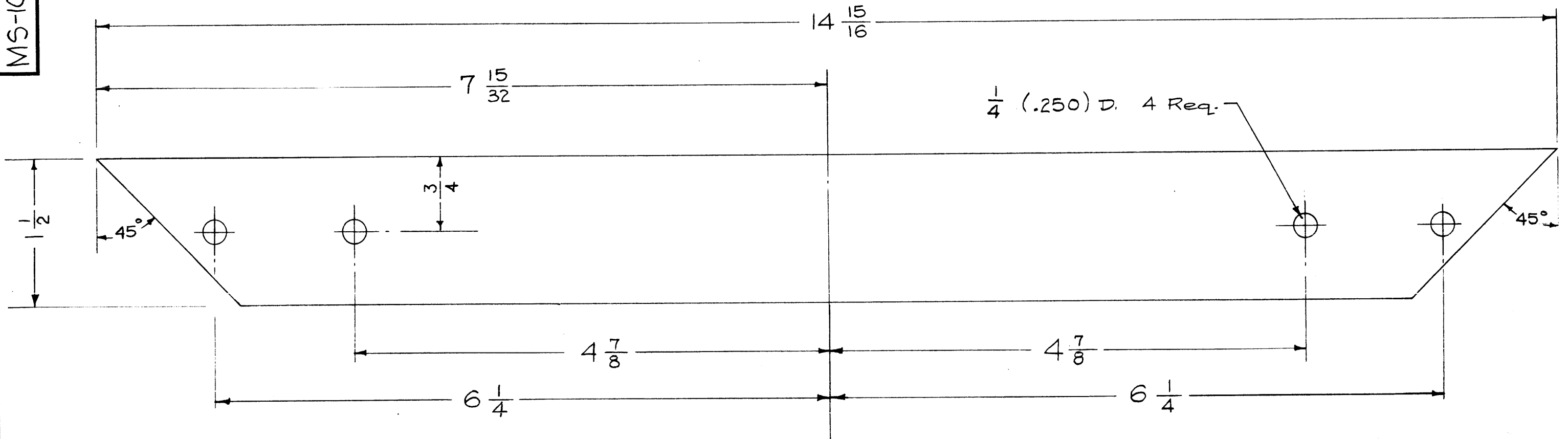
Property of:
 THE TECHNICAL MATERIEL CORPORATION
 MAMARONECK, NEW YORK

ISSUE	ITEM	CHANGED FROM	DATE	CH. NO.	DRAFTS	CHECKER	ENG. APP.
A	1	S-404 WAS S-101	12/19/59	1001	AB		EMN
TOLERANCES			SCALE:				
DEC. DIM. ±			MAXIMUM ALLOWABLE TOLERANCES HAVE BEEN DETERMINED AND ANY DEVIATIONS WILL BE CAUSE FOR REJECTION.				
FRAC. DIM. ±			REMOVE ALL BURRS AND SHARP EDGES				
ANGULAR DIM. ±							

REQ. PER UNIT	MODEL	PROJECT NO.	ASS'Y. NO.	DATE
1	A-1279			
USED ON				

REQ. ITEM	PART NO.	DESCRIPTION	SYMBOL
1	X 3/4 X 1/8 ANGLE	THE TECHNICAL MATERIEL CORP. MAMARONECK, NEW YORK	
ALUMINUM		BRACE, CHASSIS	
6063-T5		A-1279	P/O 9PT-750-D
S-404 YELLOW IRIDITE		DRAWN	CHECKED
FINISH & SPEC. NO.		FINAL APPROVAL	
		MS-1056 A	

MS-1062 B



NOTICE TO PERSONS RECEIVING THIS DRAWING

THE TECHNICAL MATERIEL CORPORATION claims proprietary right in the material disclosed hereon. This drawing is issued in confidence for engineering information only and may not be reproduced or used to manufacture anything shown hereon without permission from THE TECHNICAL MATERIEL CORPORATION to the user. This drawing is loaned for mutual assistance and is subject to recall at any time.

Property of:
THE TECHNICAL MATERIEL CORPORATION
MAMARONECK, NEW YORK

ISSUE	ITEM	CHANGED FROM	DATE	CH. NO.	DRAFTS	CHECKER	ENG. APP.
B	1	FINISH WAS S107 LACQUER	6/9/59	—	PI	JR	[Signature]
A	2	2024 T4 WAS 6063T5	7/15/57	1	[Signature]	[Signature]	[Signature]
	1	1/4 D. HOLES WAS 13/64					

TOLERANCES: DEC. DIM. \pm FRAC. DIM. \pm 1/64 ANGULAR DIM. \pm

SCALE: FULL

MAXIMUM ALLOWABLE TOLERANCES HAVE BEEN DETERMINED AND ANY DEVIATIONS WILL BE CAUSE FOR REJECTION. REMOVE ALL BURRS AND SHARP EDGES

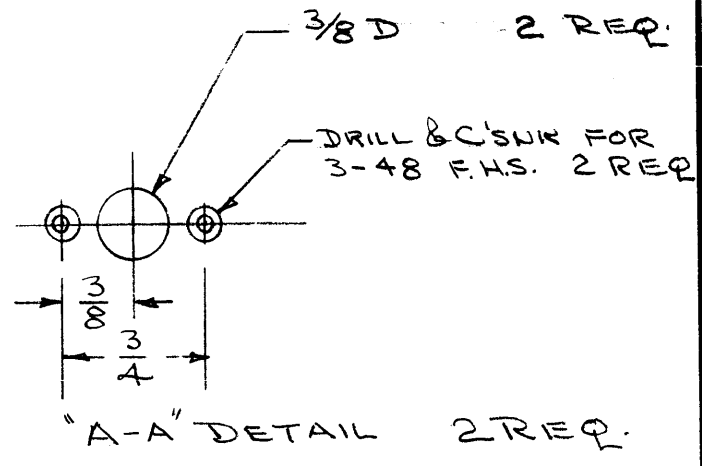
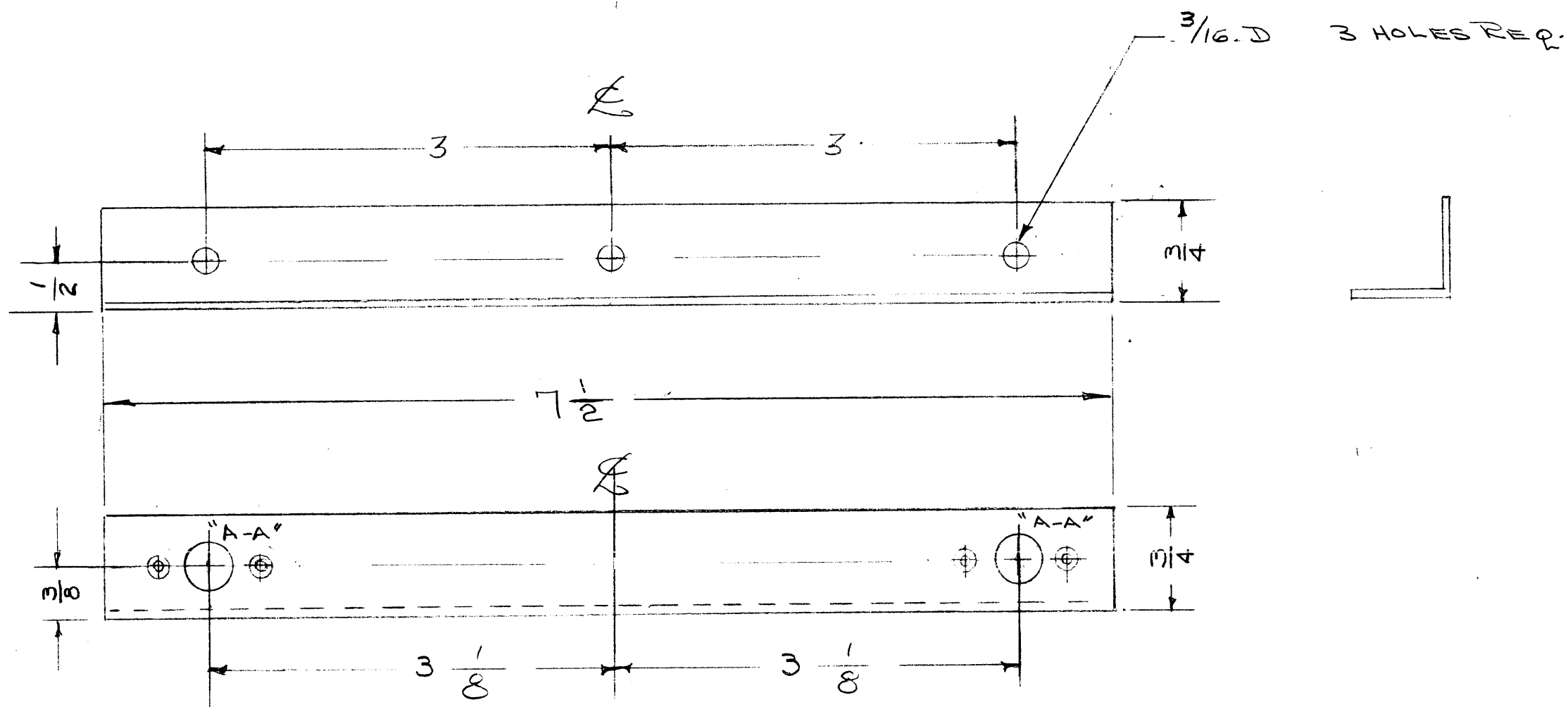
8	TER-5000	A-1431(8)	5-29-57
REQ. PER UNIT	MODEL	PROJECT NO.	ASS'Y. NO.
			DATE

USED ON

REQ. ITEM	PART NO.	DESCRIPTION	SYMBOL
	3/16 x 1 1/2	THE TECHNICAL MATERIEL CORP.	
	STOCK SIZE	MAMARONECK, NEW YORK	
	ALUMINIUM	GUSSET PLATE	
		(TER-5000)	
	2024-T4	16 5-29-57	[Signature]
		[Signature]	[Signature]
	S404 YELLOW IRIDITE		
	FINISH & SPEC. NO.	ELEC. DES. APP.	MECH. DES. APP.

MS-1062 B

MS-1082 B



NOT TO PERSONS RECEIVING THIS DRAWING

THE TECHNICAL MATERIEL CORPORATION claims proprietary right in the material disclosed hereon. This drawing is issued in confidence for engineering information only and may not be reproduced or used to manufacture anything shown hereon without permission from THE TECHNICAL MATERIEL CORPORATION to the user. This drawing is loaned for mutual assistance and is subject to recall at any time.

Property of:
THE TECHNICAL MATERIEL CORPORATION
 MAMARONECK, NEW YORK

ISSUE	ITEM	CHANGED FROM	DATE	CH. NO.	DRAFTS	CHECKER	ENG. APP.
B	1	S-404 WAS S-101	12/19/59	1001	HB		EMN
A	1	Mounting Holes Were $\frac{5}{32}$	9-25-57	1	SC	HAD	JM

TOLERANCES: DEC. DIM. \pm , FRAC. DIM. \pm $\frac{1}{64}$, ANGULAR DIM. \pm

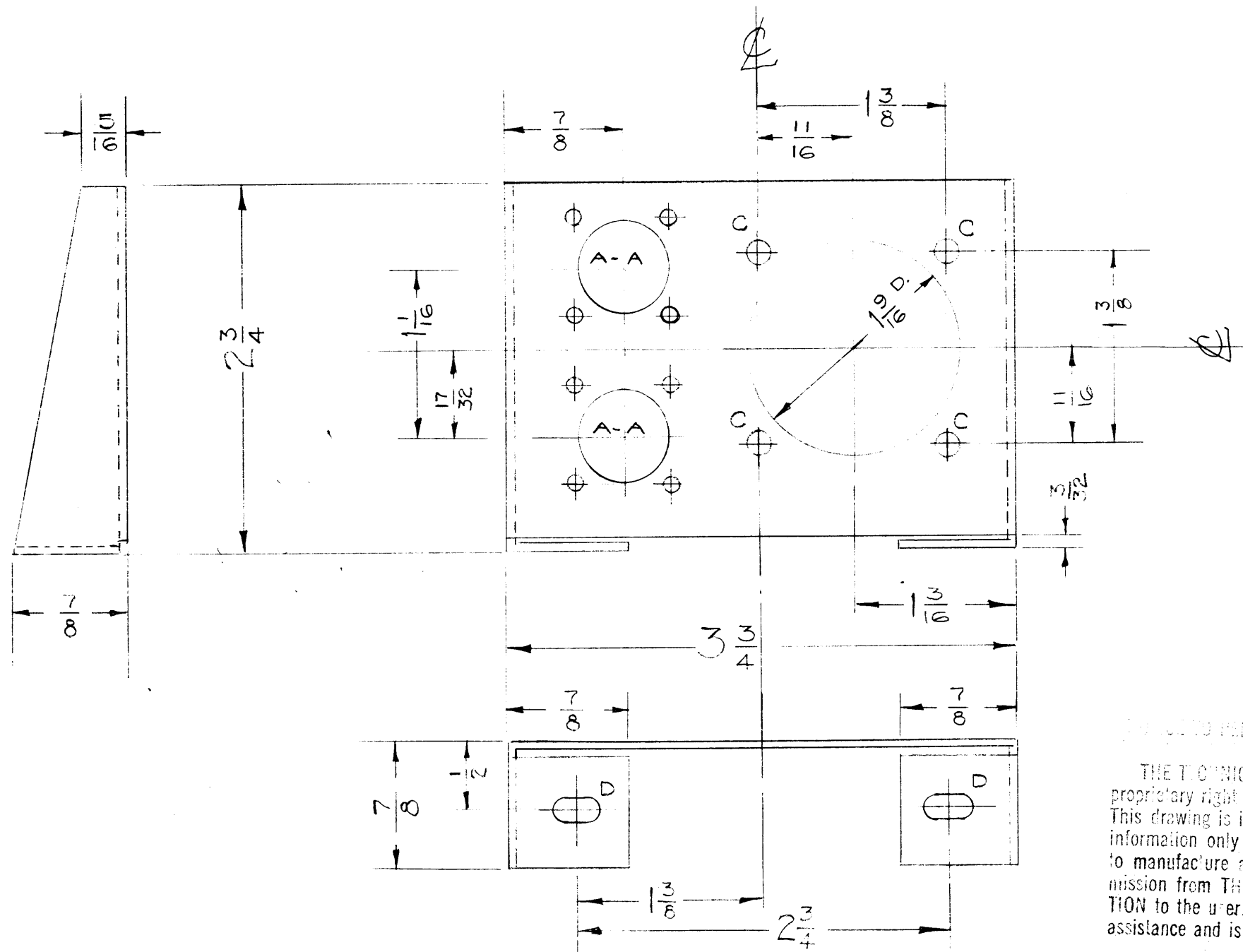
SCALE: $\frac{1}{4}$

MAXIMUM ALLOWABLE TOLERANCES HAVE BEEN DETERMINED AND ANY DEVIATIONS WILL BE CAUSE FOR REJECTION. REMOVE ALL BURRS AND SHARP EDGES

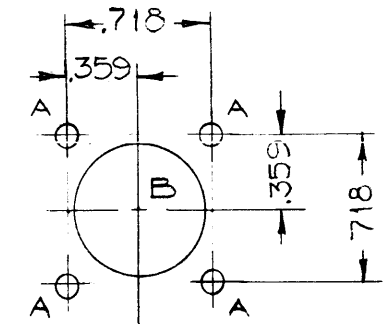
1	TLI-1	652	A-143B	6-24-57
REQ. PER UNIT	MODEL	PROJECT NO.	ASS'Y. NO.	DATE

USED ON

REQ. ITEM	PART NO.	DESCRIPTION	SYMBOL
.062		THE TECHNICAL MATERIEL CORP.	
	STOCK SIZE	MAMARONECK, NEW YORK	
ALUMINUM		COVER, BRACKET	
	MATERIAL	FRONT	
5052-H32		R.F.B. HAD Jk	
	TYPE & TEMPER	DRAWN	
S-404 YELLOW IRIDITE		CHECKED	
	FINISH & SPEC. NO.	FINAL APPROVAL	
		RFB	
		ELEC. DES. APP. MECH. DES. APP.	MS-1082 B



- A - $\frac{1}{8}$ (.125) D. 8 REQ.
- B - $\frac{11}{16}$ (.687) D. 2 REQ.
- C - $\frac{11}{64}$ (.171) D. 4 REQ.
- D - $\frac{13}{64} \times \frac{13}{32}$ SLOTS 2 REQ.



DETAIL A-A
2 REQ.

PROPERTY OF PERSONS RECEIVING THIS DRAWING

THE TECHNICAL MATERIEL CORPORATION claims proprietary right in the material disclosed hereon. This drawing is issued in confidence for engineering information only and may not be reproduced or used to manufacture anything shown hereon without permission from THE TECHNICAL MATERIEL CORPORATION to the user. This drawing is loaned for mutual assistance and is subject to recall at any time.

Property of:
THE TECHNICAL MATERIEL CORPORATION
MAMARONECK, NEW YORK

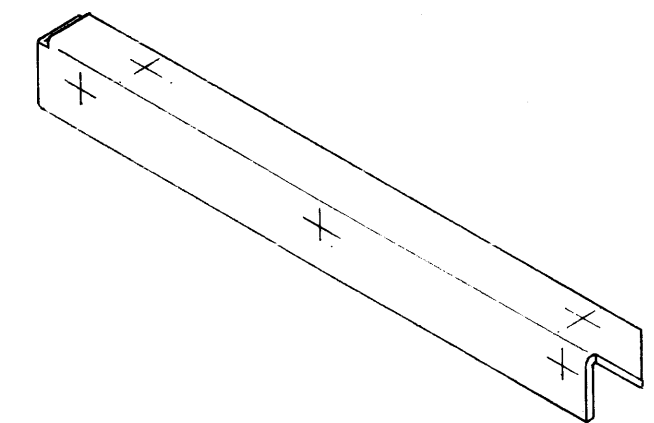
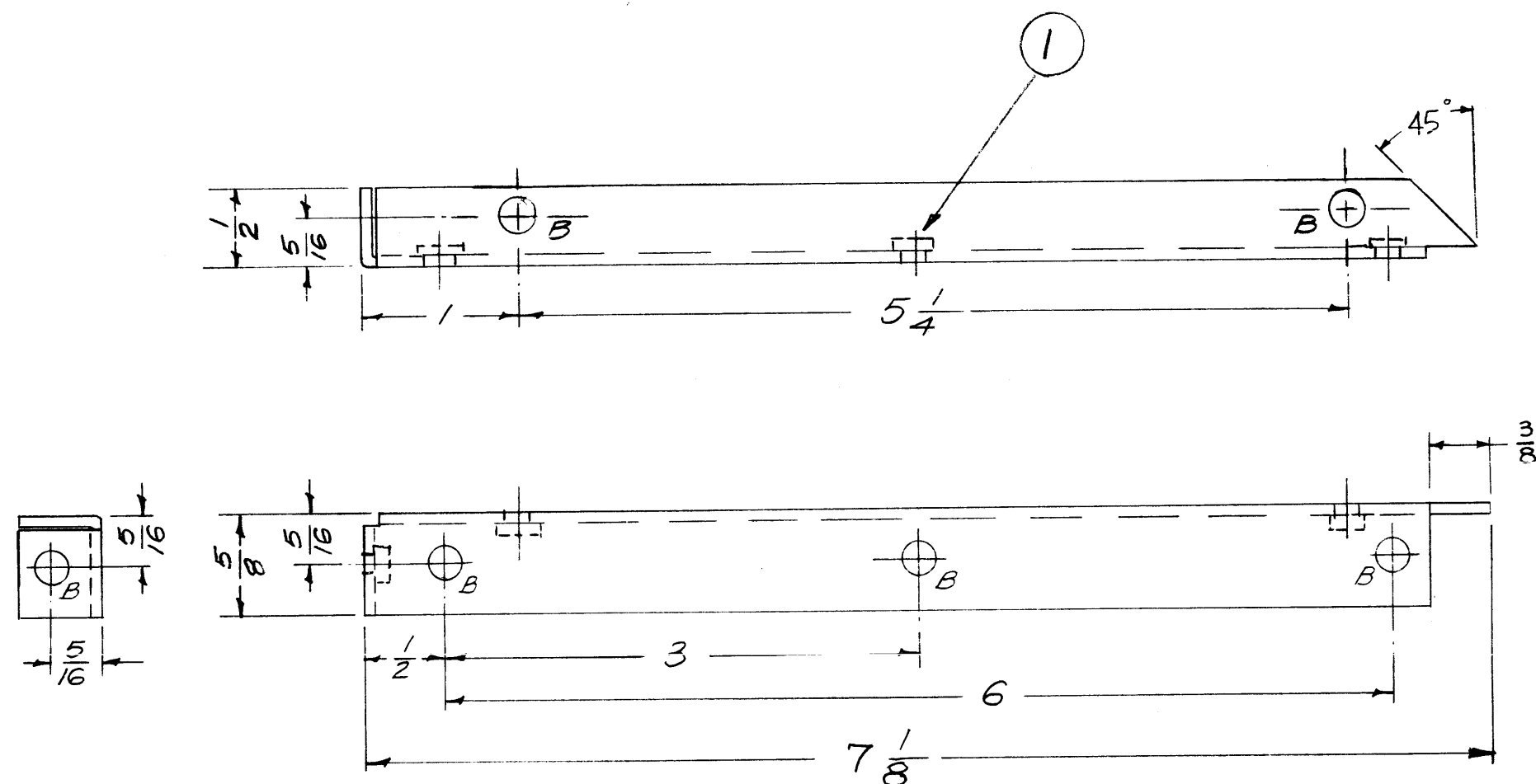
REF. LD-356

ISSUE	ITEM	CHANGED FROM	DATE	CH. NO.	DRAFTS	CHECKER	ENG. APP.
A	1	S-404 WAS S-101	12/14/59	1001	AB		EMN
TOLERANCES		SCALE: $\frac{1}{16}$					
DEC. DIM. \pm		MAXIMUM ALLOWABLE TOLERANCES HAVE BEEN DETERMINED AND ANY DEVIATIONS WILL BE CAUSE FOR REJECTION.					
FRAC. DIM. $\pm \frac{1}{64}$		REMOVE ALL BURRS AND SHARP EDGES					
ANGULAR DIM. \pm							

REQ. PER UNIT	MODEL	PROJECT NO.	ASS'Y. NO.	DATE
1	A-1279			6-28-57
USED ON				

REQ. ITEM	PART NO.	DESCRIPTION	SYMBOL
	.064	THE TECHNICAL MATERIEL CORP.	
	STOCK SIZE	MAMARONECK, NEW YORK	
	ALUMINUM	CHASSIS, CONNECTOR	
	MATERIAL	A-1279	
5652-H32		6.28.57	AB
		DRAWN	CHECKED
		FINAL APPROVAL	
	S-404 YELLOW IRIDITE		MS-1085 A
	FINISH & SPEC. NO.	ELEC. DES. APP.	MECH. DES. APP.

MS-1094 C



NOTICE TO PERSONS RECEIVING THIS DRAWING
 THE TECHNICAL MATERIEL CORPORATION claims proprietary right in the material disclosed hereon. This drawing is issued in confidence for engineering information only and may not be reproduced or used to manufacture anything shown hereon without permission from THE TECHNICAL MATERIEL CORPORATION to the user. This drawing is loaned for mutual assistance and is subject to recall at any time.

Property of:
 THE TECHNICAL MATERIEL CORPORATION
 MAMARONECK, NEW YORK

B- $\frac{.191}{.194}$ DIA (NT-129-0632A) 4 REQ

ISSUE	ITEM	CHANGED FROM	DATE	CH. NO.	DRAFTS	CHECKER	ENG. APP.
C	1	DWS UPDATED	10/1/63	10227	AS	M/T	WSD
B	1	ITEM 1 WAS SM-107-23	8/15/60	2815	RM	JCK	JDE
A	1	S-404 WAS S-101	12/19/59	1001	AS		EMN

REQ. PER UNIT	MODEL	PROJECT NO.	ASS'Y. NO.	DATE
1	SBE-3		AC-101	11-25-59
1	SBE-1+2			7-16-57

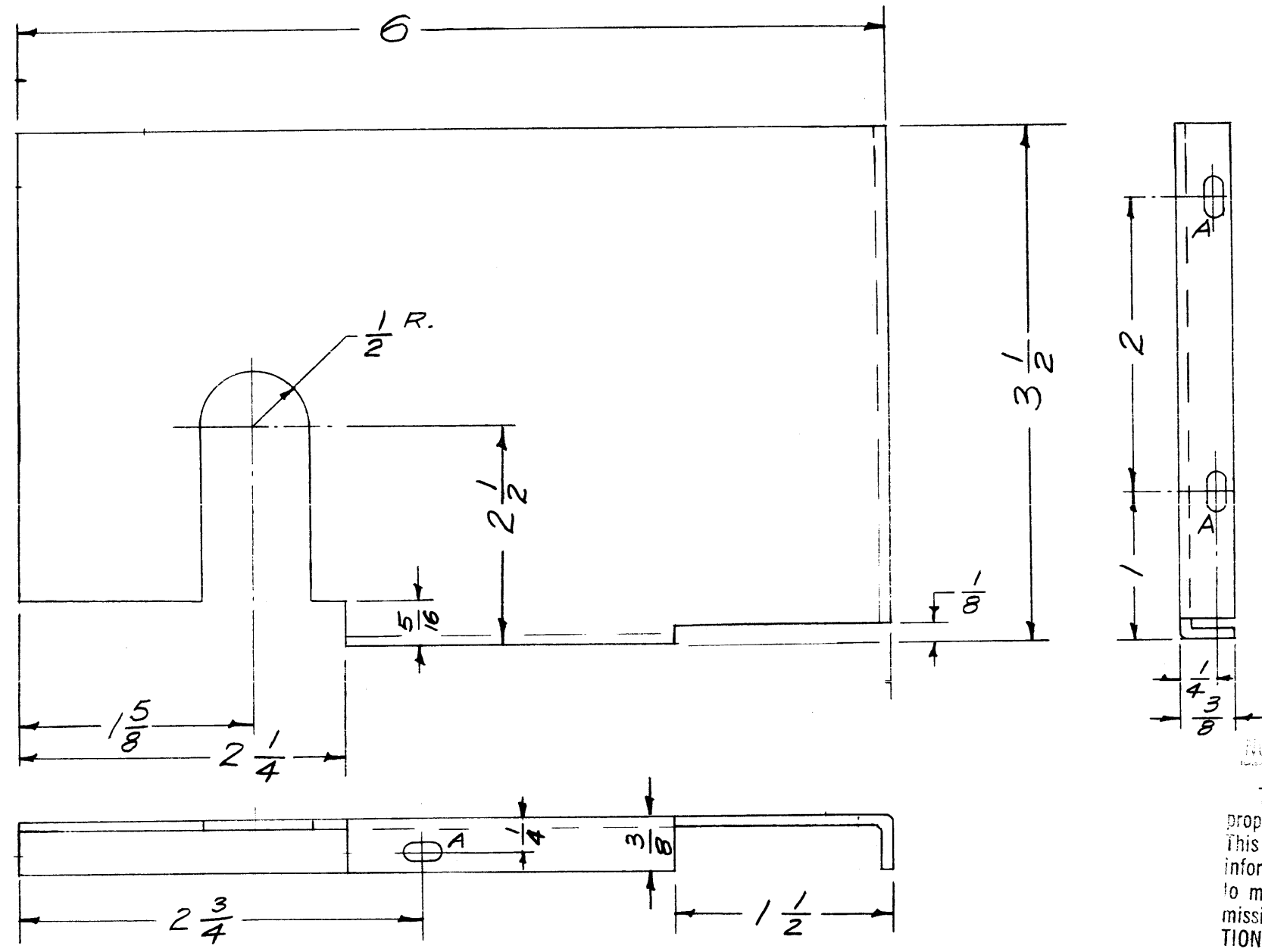
REQ. ITEM	PART NO.	DESCRIPTION	SYMBOL
6	NT129-0632A	NUT ROUND, SWAGE TYPE	
.064 THK. STOCK SIZE		THE TECHNICAL MATERIEL CORP. MAMARONECK, NEW YORK	
Aluminum		BRACKET, RF COVER	
MATERIAL			
5052-H32		67-16-57	DOB
TYPE & TEMPER		HEAT TREAT. SPEC.	DRAWN
S-404 YELLOW IRIDITE			CHECKED
FINISH & SPEC. NO.		ELEC. DES. APP.	MECH. DES. APP.
			MS-1094 C

DEC. DIM. ±
 FRAC. DIM. ± $\frac{1}{64}$
 ANGULAR DIM. ±

SCALE: DO NOT SCALE (2-1027)
 MAXIMUM ALLOWABLE TOLERANCES HAVE BEEN DETERMINED AND ANY DEVIATIONS WILL BE CAUSE FOR REJECTION.
 REMOVE ALL BURRS AND SHARP EDGES

USED ON

MS-1098 B



A - 1/8 x 1/4 slots — 3 Req.

NOTICE TO PERSONS RECEIVING THIS DRAWING

THE TECHNICAL MATERIEL CORPORATION claims proprietary right in the material disclosed hereon. This drawing is issued in confidence for engineering information only and may not be reproduced or used to manufacture anything shown hereon without permission from THE TECHNICAL MATERIEL CORPORATION to the user. This drawing is loaned for mutual assistance and is subject to recall at any time.

Property of:
THE TECHNICAL MATERIEL CORPORATION
MAMARONECK, NEW YORK

ISSUE	ITEM	CHANGED FROM	DATE	CH. NO.	DRAFTS	CHECKER	ENG. APP.
B	1	S-404 WAS S-101	12/14/59	1001	AKS		EMN
A	1	ONE SLOT DELE.	11/20/57	1	16	QRB	QRB

TOLERANCES

SCALE: FULL

ENG SKETCH: 2-996

DEC. DIM. ±
FRAC. DIM. ± 1/64
ANGULAR DIM. ±

MAXIMUM ALLOWABLE TOLERANCES HAVE BEEN DETERMINED AND ANY DEVIATIONS WILL BE CAUSE FOR REJECTION.
REMOVE ALL BURRS AND SHARP EDGES

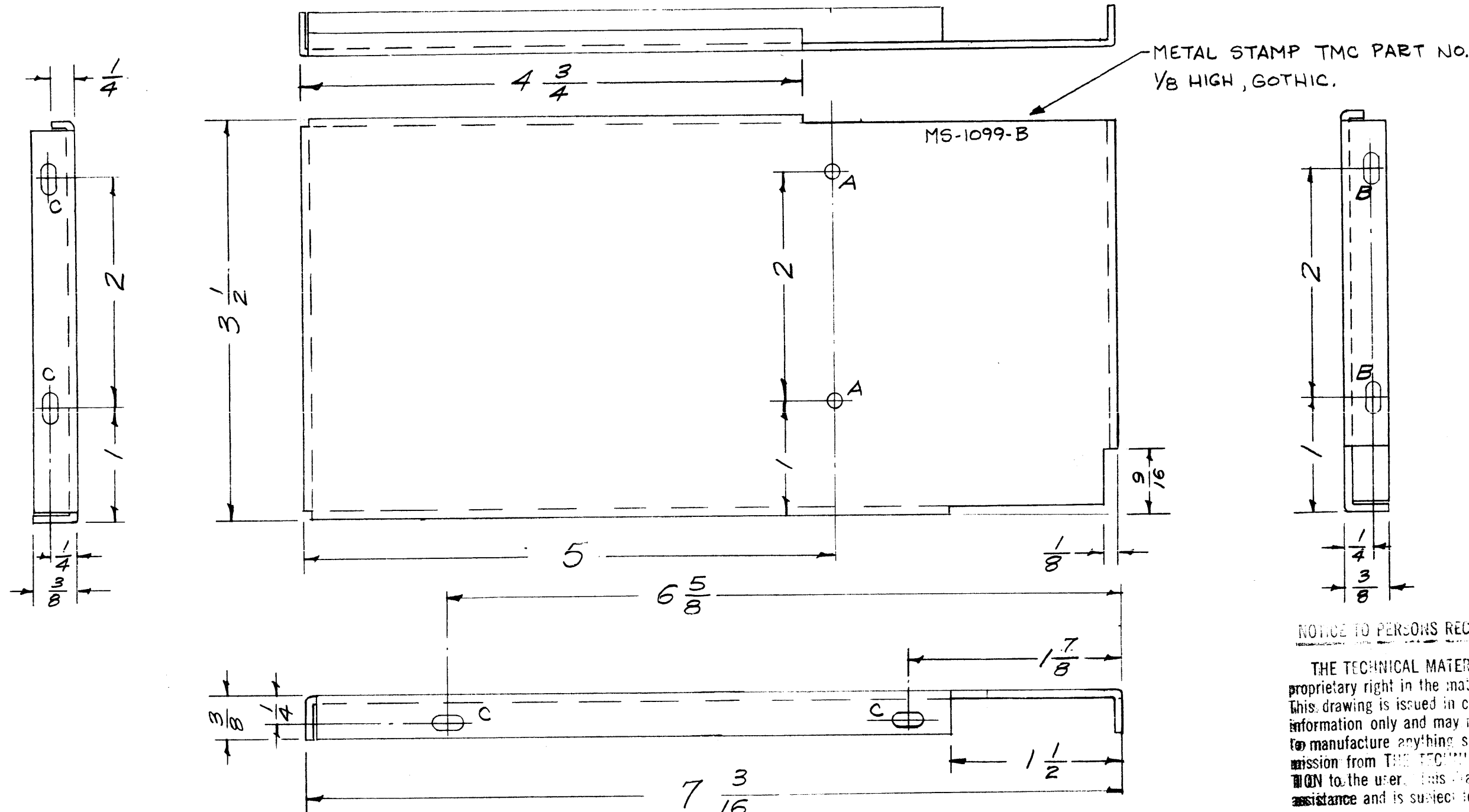
REQ. PER UNIT	MODEL	PROJECT NO.	ASS'Y. NO.	DATE
1	SBE-3		AX-204	11-30-59
1	SBE-1+2			7-17-57

USED ON

REQ. ITEM	PART NO.	DESCRIPTION	SYMBOL
	.064 THK.	THE TECHNICAL MATERIEL CORP.	
	STOCK SIZE	MAMARONECK, NEW YORK	
	Aluminum	RF, SHIELD, CONDENSOR	
	MATERIAL	SBE-1	
	5052-H32	167-17-57	QRB
	TYPE & TEMPER	HEAT TREAT. SPEC.	DRAWN
	S-404 YELLOW IRIDITE		CHECKED
	FINISH & SPEC. NO.		FINAL APPROVAL
			MS-1098 B

ELEC. DES. APP. MECH. DES. APP.

MS-1099 B



NOTICE TO PERSONS RECEIVING THIS DRAWING

THE TECHNICAL MATERIEL CORPORATION claims proprietary right in the material disclosed hereon. This drawing is issued in confidence for engineering information only and may not be reproduced or used to manufacture anything shown hereon without permission from THE TECHNICAL MATERIEL CORPORATION to the user. This drawing is loaned for mutual assistance and is subject to recall at any time.

Property of:
THE TECHNICAL MATERIEL CORPORATION
 MAMARONECK, NEW YORK.

A - $\frac{1}{8}$ (.125) D. — 2 Req.
 B - $\frac{1}{8} \times \frac{1}{4}$ Slots — 2 Req.
 C - $\frac{9}{64} \times \frac{9}{32}$ slots - 4 Req.

ISSUE	ITEM	CHANGED FROM	DATE	CH. NO.	DRAFTS	CHECKER	ENG. APP.
B	2	(4) "C" SLOTS ADDED	7-17-63	9619	EMN	EMN	
A	1	(4) "B" SLOTS DELETED	12/14/59	1001	#B	EMN	
A	1	S-404 WAS S-101	12/14/59	1001	#B	EMN	

1	SBE-3	AX-204	11-30-59
1	SBE-1+2		7-17-57
REQ. PER UNIT	MODEL	PROJECT NO.	ASS'Y. NO.
			DATE

REQ. ITEM	PART NO.	DESCRIPTION	SYMBOL
	.064 THK STOCK SIZE	THE TECHNICAL MATERIEL CORP. MAMARONECK, NEW YORK	
	ALUMINUM	SHIELD, RF SECTION	
		SBE	
	5052-H32	167-1757	EMN
		DRAWN	CHECKED
	S-404 YELLOW IRIDITE	2B	EMN
		ELEC. DES. APP.	MECH. DES. APP.

MS-1099 B