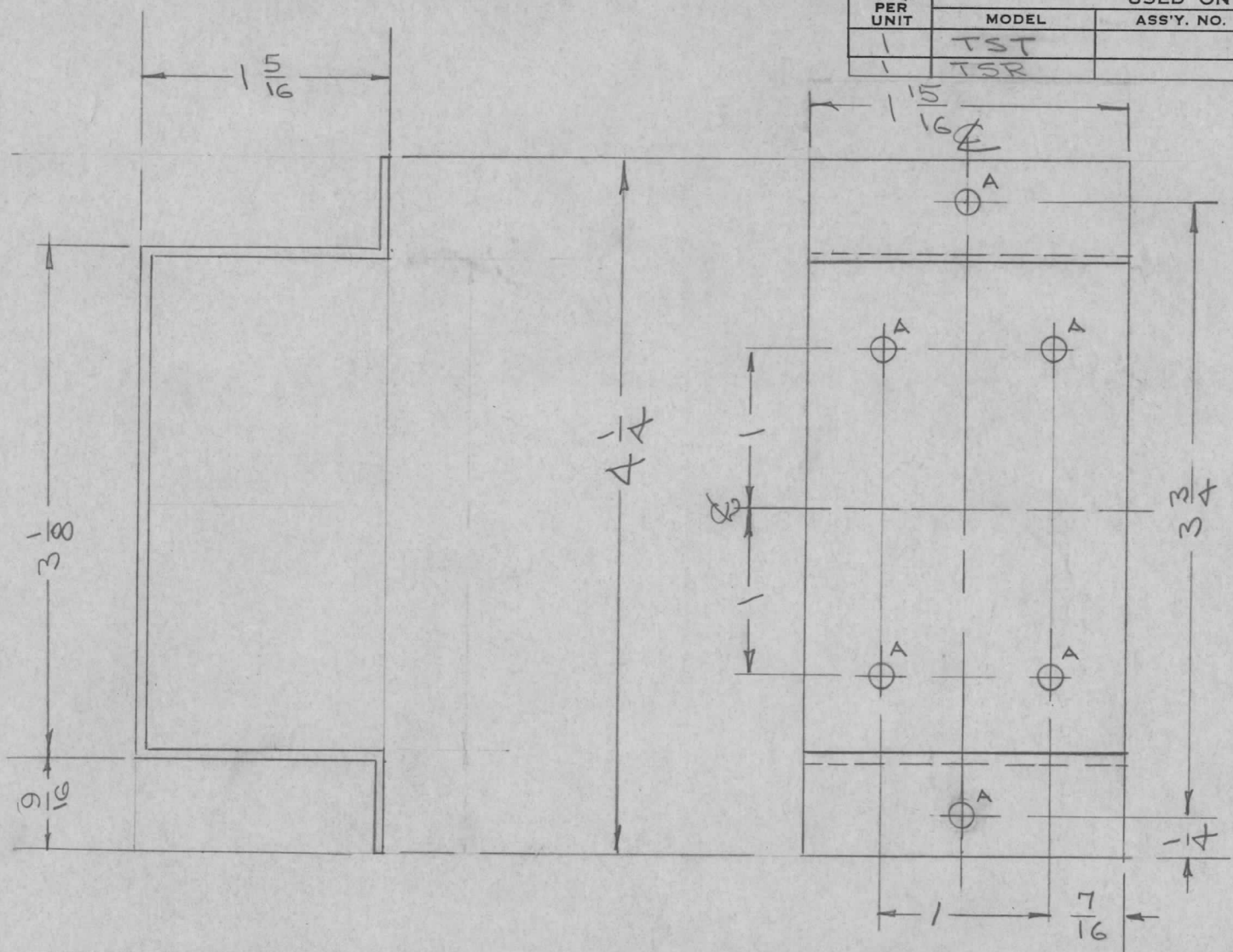


REQ. PER UNIT	MODEL	USED ON	
		ASS'Y. NO.	DATE
1	TST		1/15/57
1	TSR		1/15/57

MS-1012 B

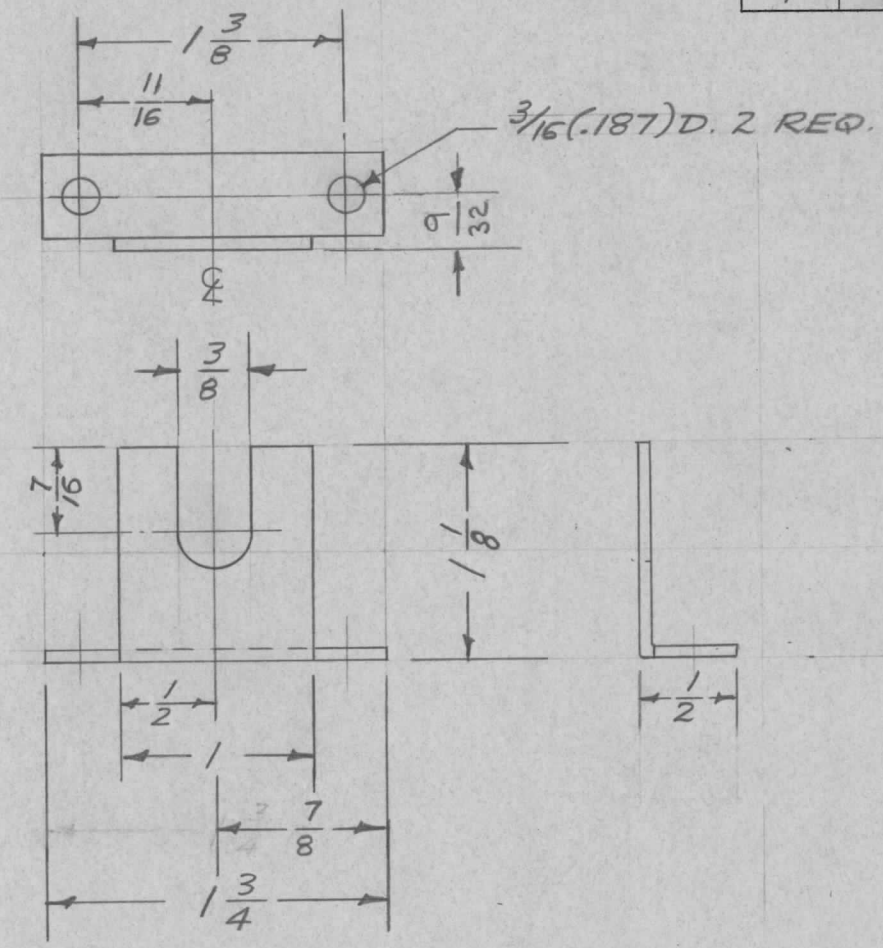


A = 5/32 D 6 HOLES

REQ. ITEM	PART NO.	DESCRIPTION	SYMBOL				
	.051	THE TECHNICAL MATERIEL CORP. MAMARONECK, NEW YORK	BRACKET, TUBE CHASSIS MODEL TST				
	STOCK SIZE						
	ALUMINUM						
	MATERIAL						
B 1	S404 IRIDITE WAS 5101 CAUSTIC DIP	12-8 59	1001	EP	EMN		
A 1	1 5/16 WAS 1 9/16	2-8-57	1	SC.	16	ML	
ISSUE	ITEM	CHANGED FROM	DATE	CH. NO.	DRAFTS	CHECKER	ENG. APP.
TOLERANCES		SCALE:		5052-H32			
DEC. DIM. ±		MAXIMUM ALLOWABLE TOLERANCES HAVE BEEN DETERMINED AND ANY DEVIATIONS WILL BE CAUSE FOR REJECTION.		TYPE & TEMPER		HEAT TREAT. SPEC.	
FRAC. DIM. ± 1/64		REMOVE ALL BURRS AND SHARP EDGES		S404-IRIDITE		DRAWN	
ANGULAR DIM. ±				FINISH & SPEC. NO.		ELEC. DES. APP. MECH. DES. APP.	
						MS-1012 B	



REQ. PER UNIT	USED ON			MS-1014	A
	MODEL	ASS'Y. NO.	DATE		
1	TRU		1-15-57		



Blank size  $1\frac{1}{4} \times 1\frac{1}{2}$

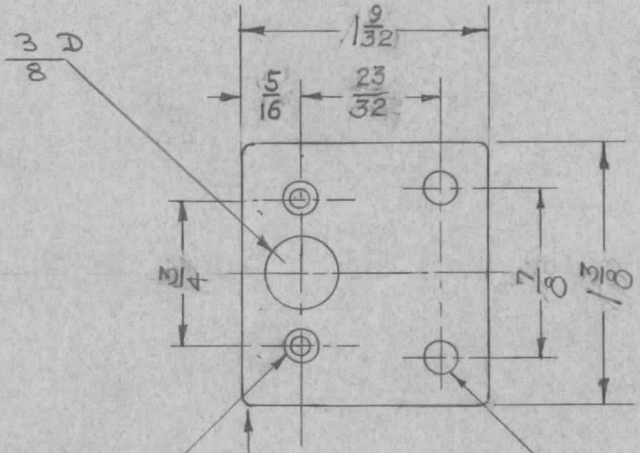
ISSUE	ITEM	CHANGED FROM	DATE	CH. NO.	DRAFTS	CHECKER	ENG. APP.	REQ. ITEM	PART NO.	DESCRIPTION	SYMBOL		
										THE TECHNICAL MATERIEL CORP. MAMARONECK. NEW YORK			
									.064 THK, STOCK SIZE	BRACKET, POTENTIOMETER			
									ALUMINUM				
A	1	S404 - IRIDITE WAS S101 CAUSTIC DIP	12-8 59	1001	P		EMN			TRU			
TOLERANCES								SCALE:					
DEC. DIM. $\pm$								MAXIMUM ALLOWABLE TOLERANCES HAVE BEEN DETERMINED AND ANY DEVIATIONS WILL BE CAUSE FOR REJECTION.					
FRAC. DIM. $\pm$ $\frac{1}{64}$								REMOVE ALL BURRS AND SHARP EDGES					
ANGULAR DIM. $\pm$								5052-H32		161-15-57	AWD	AK	
								TYPE & TEMPER	HEAT TREAT. SPEC.	DRAWN	CHECKED	FINAL APPROVAL	
								S404 IRIDITE				MS-1014	A
								FINISH & SPEC. NO.	ELEC. DES. APP.	MECH. DES. APP.			



REQ. PER UNIT	USED ON		
	MODEL	ASS'Y. NO.	DATE
1	TSR		1/29/57
1	TST		"

MS-1025

A



DRILL & COUNTER SINK  
4-40 F.H.S. 2 REQ.

2 HOLES -  $\frac{11}{64}$  D.

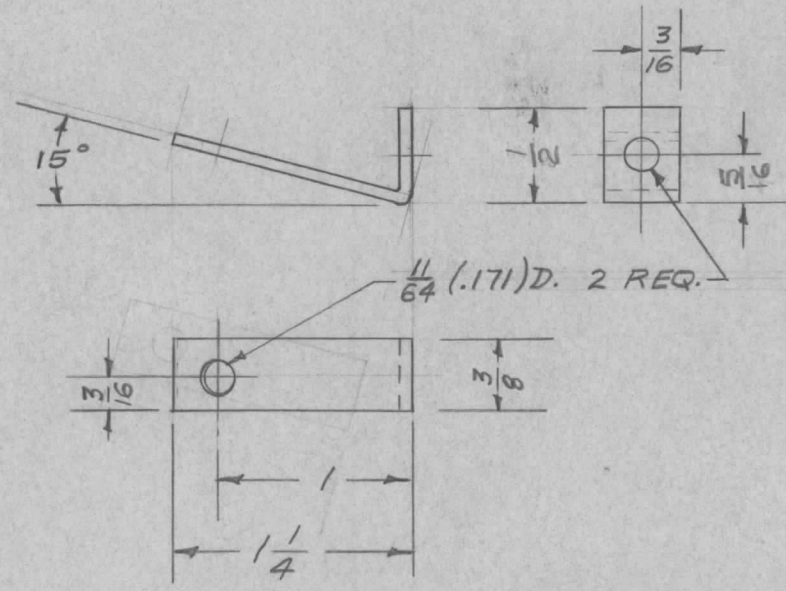
REMOVE ALL SHARP CORNERS.

REQ.	ITEM	PART NO.	DESCRIPTION				SYMBOL
		.064	THE TECHNICAL MATERIEL CORP. MAMARONECK, NEW YORK				
		STOCK SIZE	LATCH BRACKET				
A	1	ALUMINUM					
		MATERIAL					
ISSUE	ITEM	CHANGED FROM	DATE	CH. NO.	DRAFTS	CHECKER	ENG. APP.
		S404 - IRIDITE WAS S101 - CAUSTIC DIP	12-8 59	1001	P	EMN	
TOLERANCES			SCALE:				
DEC. DIM. $\pm$			MAXIMUM ALLOWABLE TOLERANCES HAVE				
FRAC. DIM. $\pm$			BEEN DETERMINED AND ANY DEVIATIONS				
ANGULAR DIM. $\pm$			WILL BE CAUSE FOR REJECTION.				
			REMOVE ALL BURRS AND SHARP EDGES				
		5052-H32	TYPE & TEMPER	HEAT TREAT. SPEC.	DRAWN	CHECKED	FINAL APPROVAL
		S404-IRIDITE					
		FINISH & SPEC. NO.	ELEC. DES. APP.	MECH. DES. APP.	MS-1025		
					A		



REQ. PER UNIT	USED ON		
	MODEL	ASS'Y. NO.	DATE
3		A-1389	
3	MSR-1	A-1390	3-5-57
2		A-1392	
8	MSR-3		6-24-58

MS-1027 C



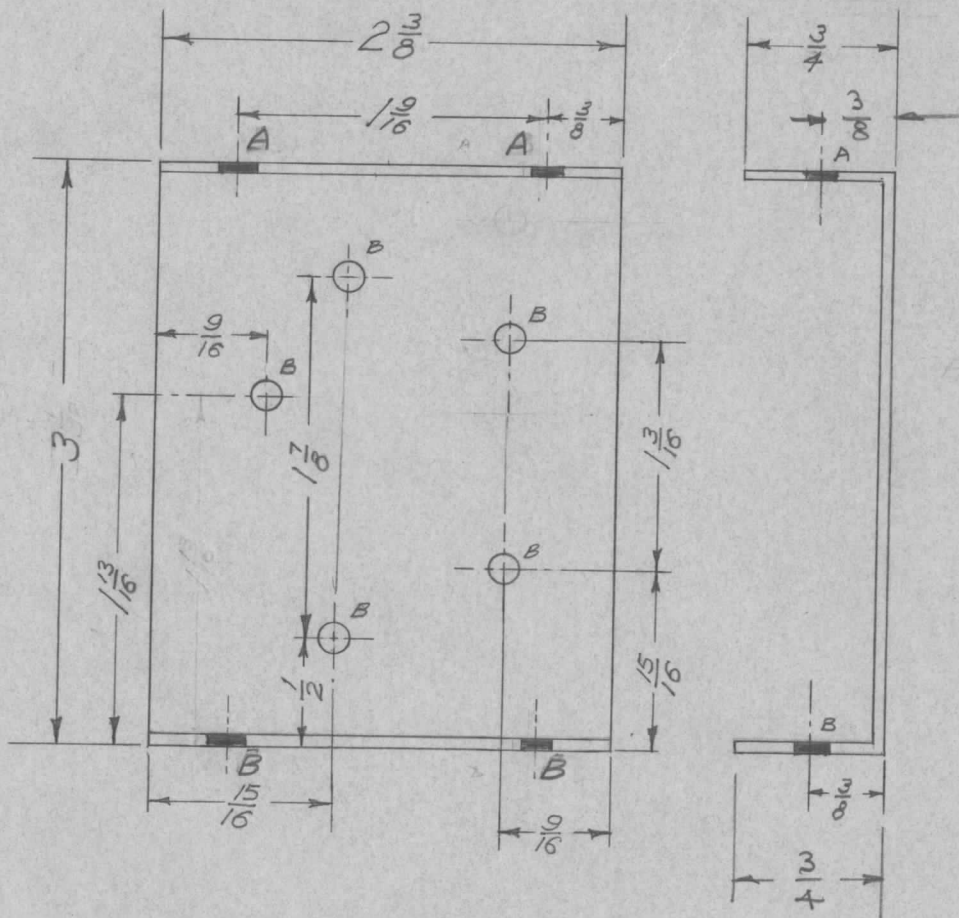
UNLESS OTHERWISE SPECIFIED  
DIMENSIONS ARE IN INCHES AND INCLUDE  
CHEMICALLY APPLIED OR PLATED FINISHES

DECIMALS	TOLERANCES	FRACTIONS
.X ± .05		± 1/64
.XX ± .01		ANGLES
.XXX ± .005		± 0° 30'

CUT HERE  
GUARANTEED  
2-56

ISSUE	ITEM	CHANGED FROM	DATE	CH. NO.	DRAFTS	CHECKER	ENG. APP.	REQ. ITEM	PART NO.	DESCRIPTION	SYMBOL	
C	1	S404-IRIDITE WAS S101 CAUSTIC DIP	12-8 59	1001	P		EMN		.064 THK.	THE TECHNICAL MATERIEL CORP. MAMARONECK, NEW YORK BRACKET, ANGLE, TERMINAL BOARD	MS-1027 C	
B	1	5/16 WAS 1/4 1/2 WAS 3/8	8/27/58	2	HQ	P.T.K.	all		STOCK SIZE			
A	1	3/8 BASE WAS 1/2	4/15/57	1	16	H.W.D.	AMP		ALUMINUM			
									MATERIAL			
TOLERANCES			SCALE:			525-H32		H		62-19-57		
DEC. DIM. ± FRAC. DIM. ± ANGULAR DIM. ±			MAXIMUM ALLOWABLE TOLERANCES HAVE BEEN DETERMINED AND ANY DEVIATIONS WILL BE CAUSE FOR REJECTION. REMOVE ALL BURRS AND SHARP EDGES			TYPE & TEMPER		HEAT TREAT. SPEC.		DRAWN	CHECKED	FINAL APPROVAL
						S404 IRIDITE						
						FINISH & SPEC. NO.		ELEC. DES. APP.		MECH. DES. APP.		

REQ. PER UNIT	USED ON			MS-1028	A
	MODEL	ASS'Y. NO.	DATE		
1	FX-151		3-4-57		



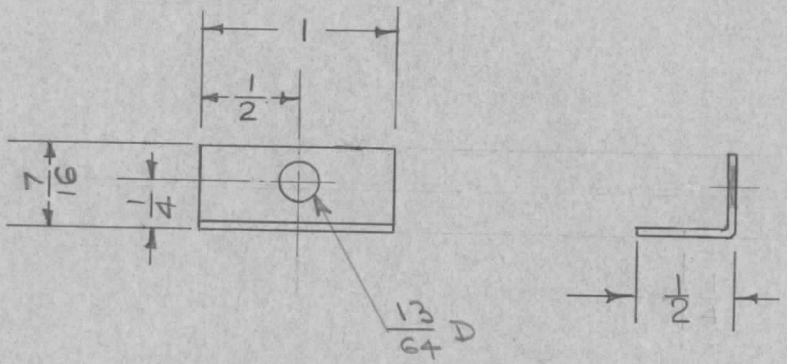
"A" = No. 36 Drill (.1065) 2 Req.

"B" =  $\frac{5}{32}$  (.1562) 7 Req.

REQ. ITEM	PART NO.	DESCRIPTION	SYMBOL
	.064	THE TECHNICAL MATERIEL CORP.	
	STOCK SIZE	MAMARONECK, NEW YORK	
	ALUMINUM	MOUNTING BRACKET	
	MATERIAL		
A 1	5404 IRIDITE WAS S101 CAUSTIC DIP	12-B 59	1001 P EMN
ISSUE ITEM	CHANGED FROM	DATE	CH. NO. DRAFTS CHECKER ENG. APP.
TOLERANCES		SCALE:	
DEC. DIM. $\pm$	MAXIMUM ALLOWABLE TOLERANCES HAVE BEEN DETERMINED AND ANY DEVIATIONS WILL BE CAUSE FOR REJECTION.		
FRAC. DIM. $\pm$	REMOVE ALL BURRS AND SHARP EDGES		
ANGULAR DIM. $\pm$			
	5052-H32	SC. 3-4-57	
TYPE & TEMPER	HEAT TREAT. SPEC.	DRAWN	CHECKED
S404 IRIDITE			
FINISH & SPEC. NO.	ELEC. DES. APP.	MECH. DES. APP.	
			MS-1028 A

REQ. PER UNIT	USED ON		
	MODEL	ASS'Y. NO.	DATE
2	TER-5000	A-1404	3-22-57
2	TER-5000	A-1405	3-22-57

MS-1029 A

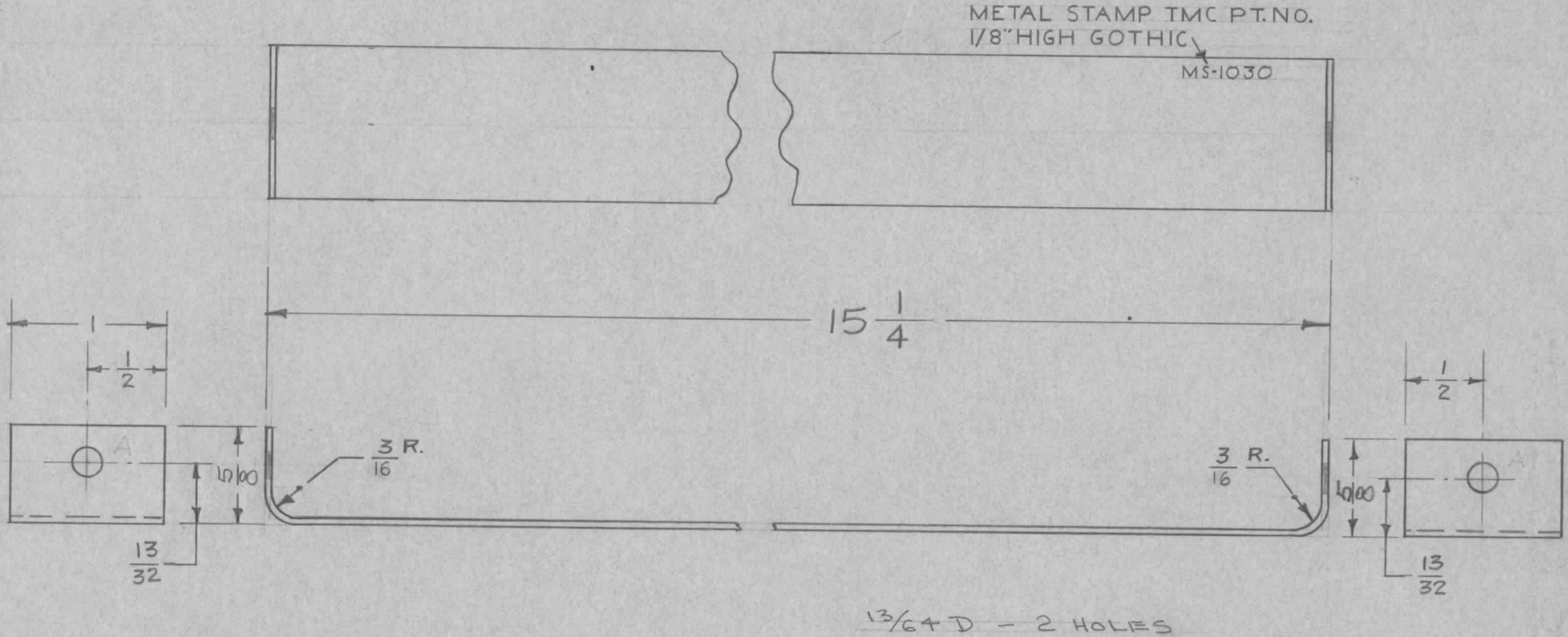


REQ. ITEM	PART NO.	DESCRIPTION	SYMBOL										
	1/16 THK. X 1" wd.	THE TECHNICAL MATERIEL CORP. MAMARONECK, NEW YORK	A 1										
	STOCK SIZE												
	BRASS	GUARD, STRAP											
	MATERIAL	(TER-5000)											
ISSUE	ITEM	CHANGED FROM	DATE	CH. NO.	DRAFTS	CHECKER	ENG. APP.	16	3-22-57	JMC	Final Approval	MS-1029	A
TOLERANCES		SCALE: //		MAXIMUM ALLOWABLE TOLERANCES HAVE BEEN DETERMINED AND ANY DEVIATIONS WILL BE CAUSE FOR REJECTION.		REMOVE ALL BURRS AND SHARP EDGES		FINISH & SPEC. NO.		ELEC. DES. APP. MECH. DES. APP.			
DEC. DIM. ±		FRAC. DIM. ± 1/64		ANGULAR DIM. ±									



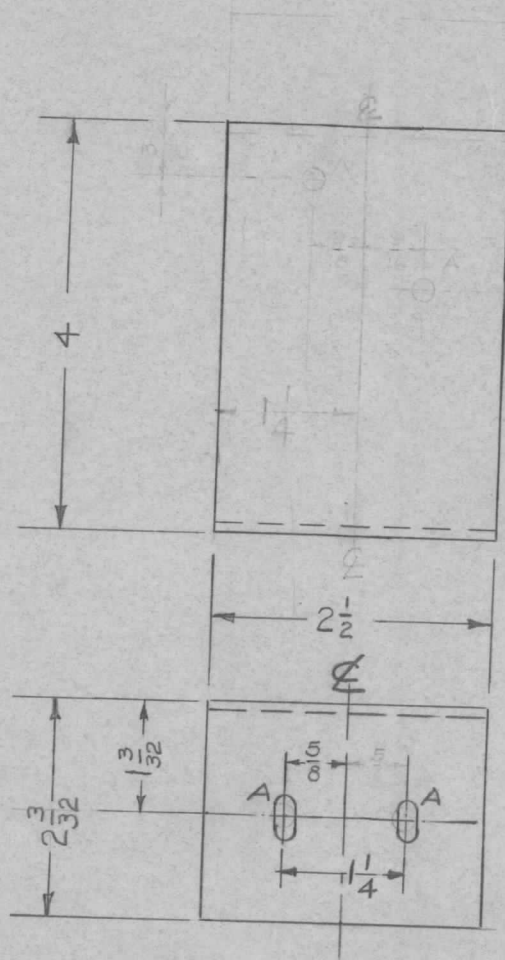
REQ. PER UNIT	USED ON		
	MODEL	ASS'Y. NO.	DATE
2	TER-5000	A-1404	3-22-57
2	TER-5000	A-1405	3-22-57

MS-1030 A



REQ.	ITEM	PART NO.	DESCRIPTION				SYMBOL
		.032 THK. X 1" WD.	THE TECHNICAL MATERIEL CORP.				
		STOCK SIZE	MAMARONECK. NEW YORK				
A	1	3/16" R. WAS 3/8 R.	COPPER				STRAP, RESISTOR
ISSUE	ITEM	CHANGED FROM	DATE	CH. NO.	DRAFTS	CHECKER	ENG. APP.
			9/14/61	5572	LI	ap	LB
TOLERANCES			SCALE: //				
DEC. DIM. $\pm$			MAXIMUM ALLOWABLE TOLERANCES HAVE BEEN DETERMINED AND ANY DEVIATIONS WILL BE CAUSE FOR REJECTION. REMOVE ALL BURRS AND SHARP EDGES				
FRAC. DIM. $\pm$ 1/64							
ANGULAR DIM. $\pm$			SOFT		163-22-57		
			TYPE & TEMPER		HEAT TREAT. SPEC.		DRAWN
			//				CHECKED
			FINISH & SPEC. NO.		ELEC. DES. APP.		MECH. DES. APP.
							MS-1030 A

REQ. PER UNIT	USED ON			MS-1032	A
	MODEL	ASS'Y. NO.	DATE		
8	TER-5000	A-1422(3)	3-26-57		



"A" SLOTS  $\frac{13}{64} \times \frac{13}{32}$  2 Req.

UNLESS OTHERWISE SPECIFIED  
DIMENSIONS ARE IN INCHES AND INCLUDE  
CHEMICALLY APPLIED OR PLATED FINISHES

DECIMALS	FRACTIONS
.X ± .05	± 1/64
.XX ± .01	ANGLES
.XXX ± .005	± 0° 30'

**TOLERANCES**

CUT HERE  
GUARANTEED  
2-66

REQ. ITEM	PART NO.	DESCRIPTION	SYMBOL
	.081	THE TECHNICAL MATERIEL CORP. MAMARONECK, NEW YORK	
	STOCK SIZE	BRACKET, TOP SUPPORT	
	ALUMINIUM	(TER-5000)	
	MATERIAL		
	5052-H32	SC 3/24/57 16 3/24/57	
	TYPE & TEMPER	HEAT TREAT. SPEC.	DRAWN
	S404 YELLOW	IRIDITE	CHECKED
	FINISH & SPEC. NO.	ELEC. DES. APP.	MECH. DES. APP.
			MS-1032
			A

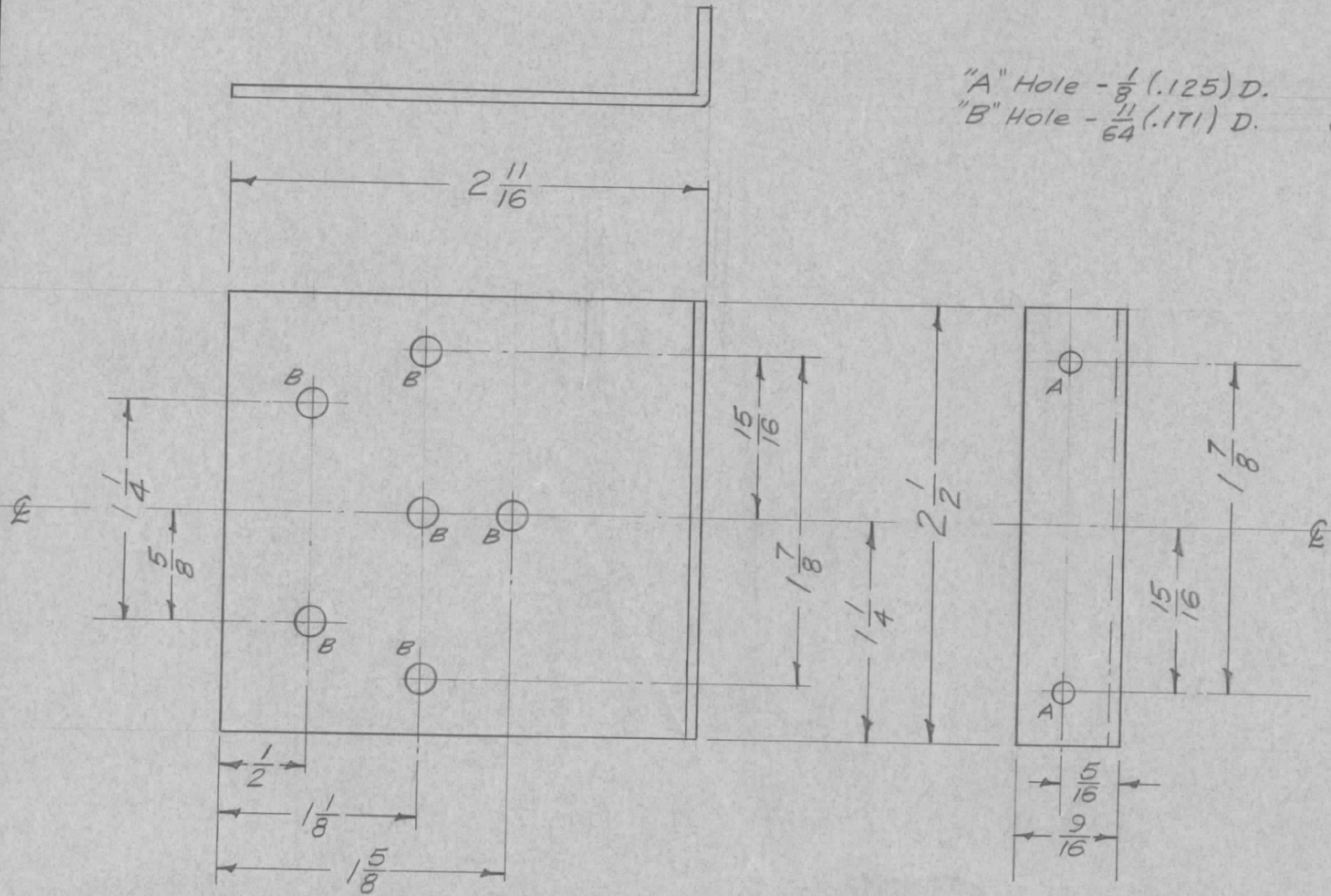
ISSUE	ITEM	CHANGED FROM	DATE	CH. NO.	DRAFTS	CHECKER	ENG. APP.
A	1	FINISH WAS S107 LACQUER	6/9/59		PI	JHQ	ahv

TOLERANCES		SCALE:
DEC. DIM. ±		MAXIMUM ALLOWABLE TOLERANCES HAVE BEEN DETERMINED AND ANY DEVIATIONS WILL BE CAUSE FOR REJECTION.
FRAC. DIM. ±		REMOVE ALL BURRS AND SHARP EDGES
ANGULAR DIM. ±		

REQ. PER UNIT	USED ON			MS-1036	A
	MODEL	ASS'Y. NO.	DATE		
1	FX-153	A-140B	3-27-57		

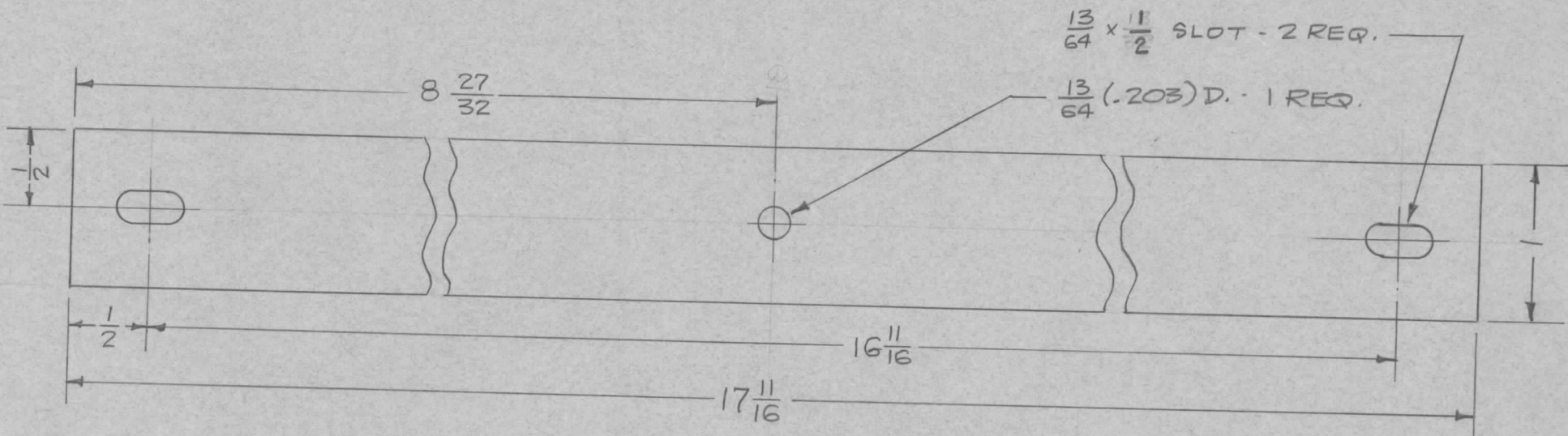
"A" Hole -  $\frac{1}{8}$  (.125) D. 2 Req.  
 "B" Hole -  $\frac{1}{64}$  (.0156) D. 6 Req.



REQ.	ITEM	PART NO.	DESCRIPTION				SYMBOL
		.064 THK.	THE TECHNICAL MATERIEL CORP.				
		STOCK SIZE	MAMARONECK, NEW YORK				
A	1	5404-IRIDITE WAS S101-CAUSTIC DIP	12-B 59	1001	P	EMN	BRACKET, FILTER
ISSUE	ITEM	CHANGED FROM	DATE	CH. NO.	DRAFTS	CHECKER	ENG. APP.
TOLERANCES			SCALE: #				
DEC. DIM. $\pm$			MAXIMUM ALLOWABLE TOLERANCES HAVE BEEN DETERMINED AND ANY DEVIATIONS WILL BE CAUSE FOR REJECTION. REMOVE ALL BURRS AND SHARP EDGES				
FRAC. DIM. $\pm$ 1/64							
ANGULAR DIM. $\pm$							
5052-H32		#	43-27-57	Jade	A. J. J.		
TYPE & TEMPER		HEAT TREAT. SPEC.	DRAWN	CHECKED	FINAL APPROVAL		
S404 IRIDITE		PLX			MS-1036 A		
FINISH & SPEC. NO.		ELEC. DES. APP.	MECH. DES. APP.				



REQ. PER UNIT	USED ON			MS-1043 B
	MODEL	ASS'Y. NO.	DATE	
1	TER-5000	A-1431(8)	4-23-57	

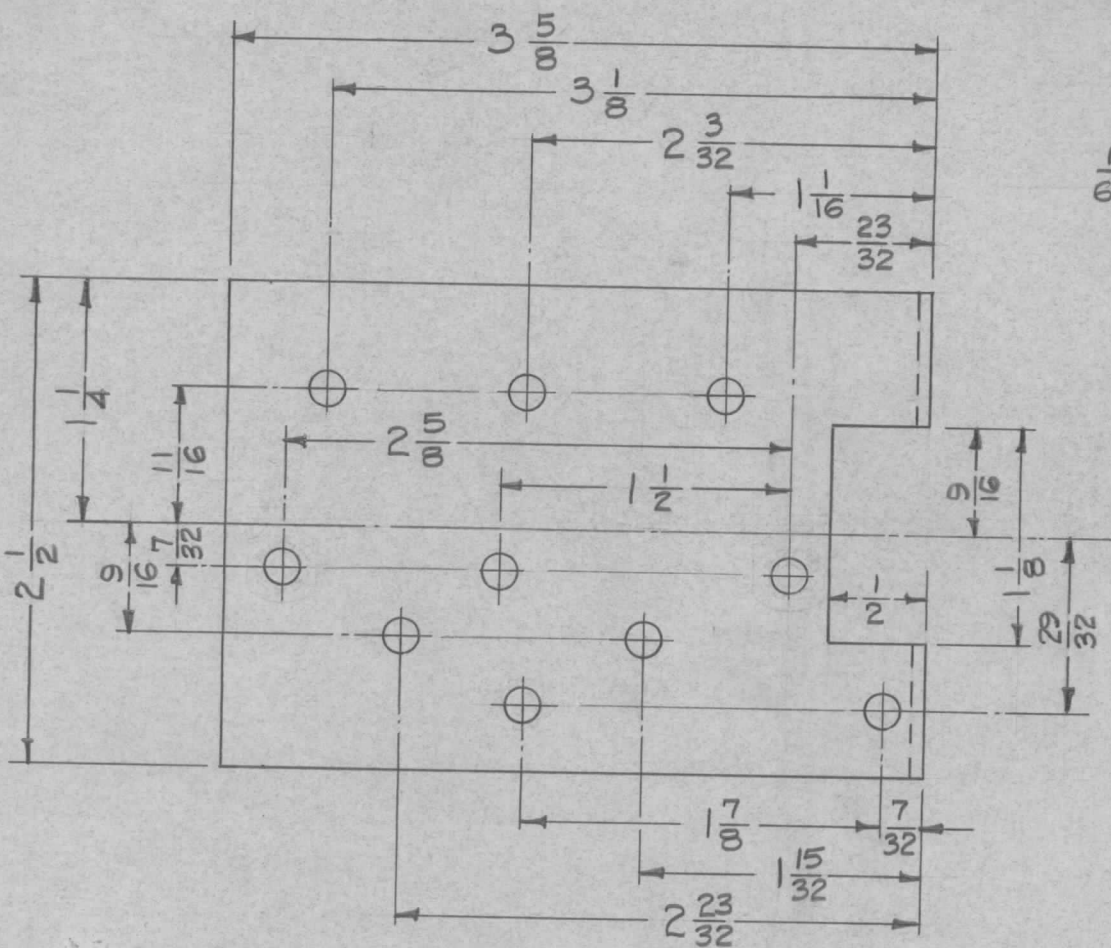


Finish - S-245 - Silver Plate .0005  
 S-423 - Iridite

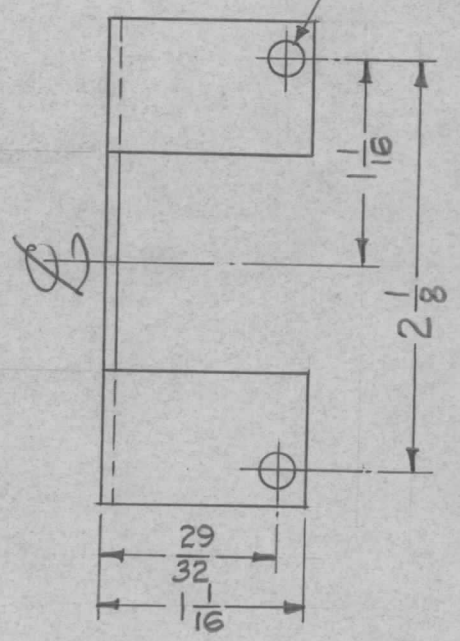
ISSUE	ITEM	CHANGED FROM	DATE	CH. NO.	DRAFTS	CHECKER	ENG. APP.	REQ. ITEM	PART NO.	DESCRIPTION	SYMBOL						
B	1	Finish Added	6/9/59		J.C.B.	<i>J.C.B.</i>	<i>chc</i>	.032 THK.									
A	2	1/2 WAS 13/32 (Slots)	7-15-57	1	SC.	<i>J.C.B.</i>	<i>chc</i>	STOCK SIZE									
	1	.032 STOCK WAS .025						COPPER, SOFT									
TOLERANCES								MATERIAL									
DEC. DIM. $\pm$			SCALE: FULL					SOFT									
FRAC. DIM. $\pm$ $\frac{1}{64}$			MAXIMUM ALLOWABLE TOLERANCES HAVE BEEN DETERMINED AND ANY DEVIATIONS WILL BE CAUSE FOR REJECTION. REMOVE ALL BURRS AND SHARP EDGES					TYPE & TEMPER		HEAT TREAT. SPEC.		DRAWN		CHECKED		FINAL APPROVAL	
ANGULAR DIM. $\pm$								See Note									
								FINISH & SPEC. NO.		ELEC. DES. APP.		MECH. DES. APP.		MS-1043 B			

REQ. PER UNIT	USED ON		
	MODEL	ASS'Y. NO.	DATE
1	FX-154	A-1424	6-18-57
1	FX-155	A-1427	6-18-57

MS-1046 A

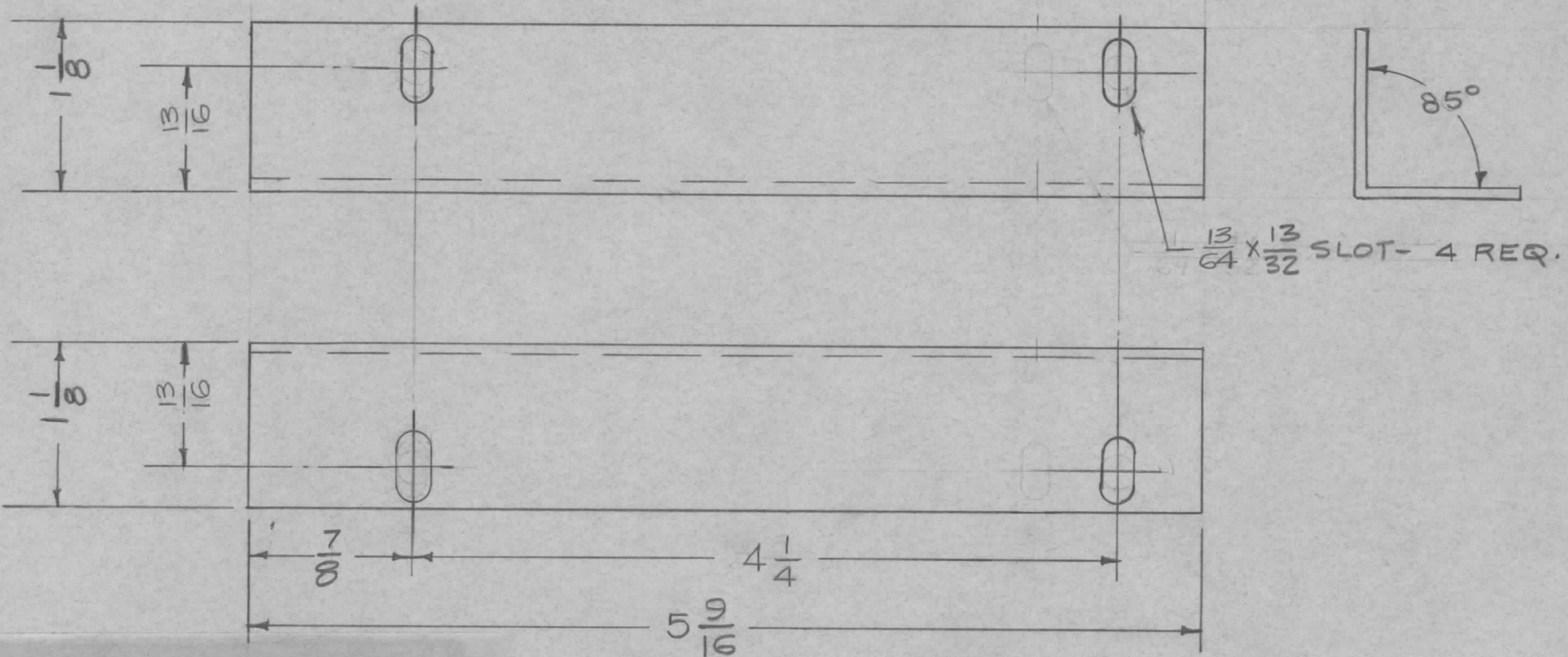


$\frac{11}{64} (.171) D. - 12 \text{ Req.}$



ISSUE	ITEM	CHANGED FROM	DATE	CH. NO.	DRAFTS	CHECKER	ENG. APP.	REQ. ITEM	PART NO.	DESCRIPTION	SYMBOL	
									.064 THK.	THE TECHNICAL MATERIEL CORP. MAMARONECK, NEW YORK	BRACKET, COIL MOUNTING	
									Aluminum			
A	1	5404 - IRIDITE WAS S101 - CAUSTIC DIP	12-8 59	1001	P		EMN					
TOLERANCES			SCALE: FULL					5052-H32	—H—	LG	JND	MS
DEC. DIM. ± FRAC. DIM. ± 1/64 ANGULAR DIM. ±			MAXIMUM ALLOWABLE TOLERANCES HAVE BEEN DETERMINED AND ANY DEVIATIONS WILL BE CAUSE FOR REJECTION. REMOVE ALL BURRS AND SHARP EDGES					TYPE & TEMPER	HEAT TREAT. SPEC.	DRAWN	CHECKED	FINAL APPROVAL
								S404-IRIDITE				
								FINISH & SPEC. NO.	ELEC. DES. APP.	MECH. DES. APP.	MS-1046 A	

REQ. PER UNIT	USED ON			MS-1049 C
	MODEL	ASS'Y. NO.	DATE	
2	TER-5000	A-1431(8)	4-30-57	



UNLESS OTHERWISE SPECIFIED  
DIMENSIONS ARE IN INCHES AND INCLUDE  
CHEMICALLY APPLIED OR PLATED FINISHES

DECIMALS	TOLERANCES	FRACTIONS
.X ± .05		± 1/64
.XX ± .01		ANGLES
.XXX ± .005		± 0° 30'

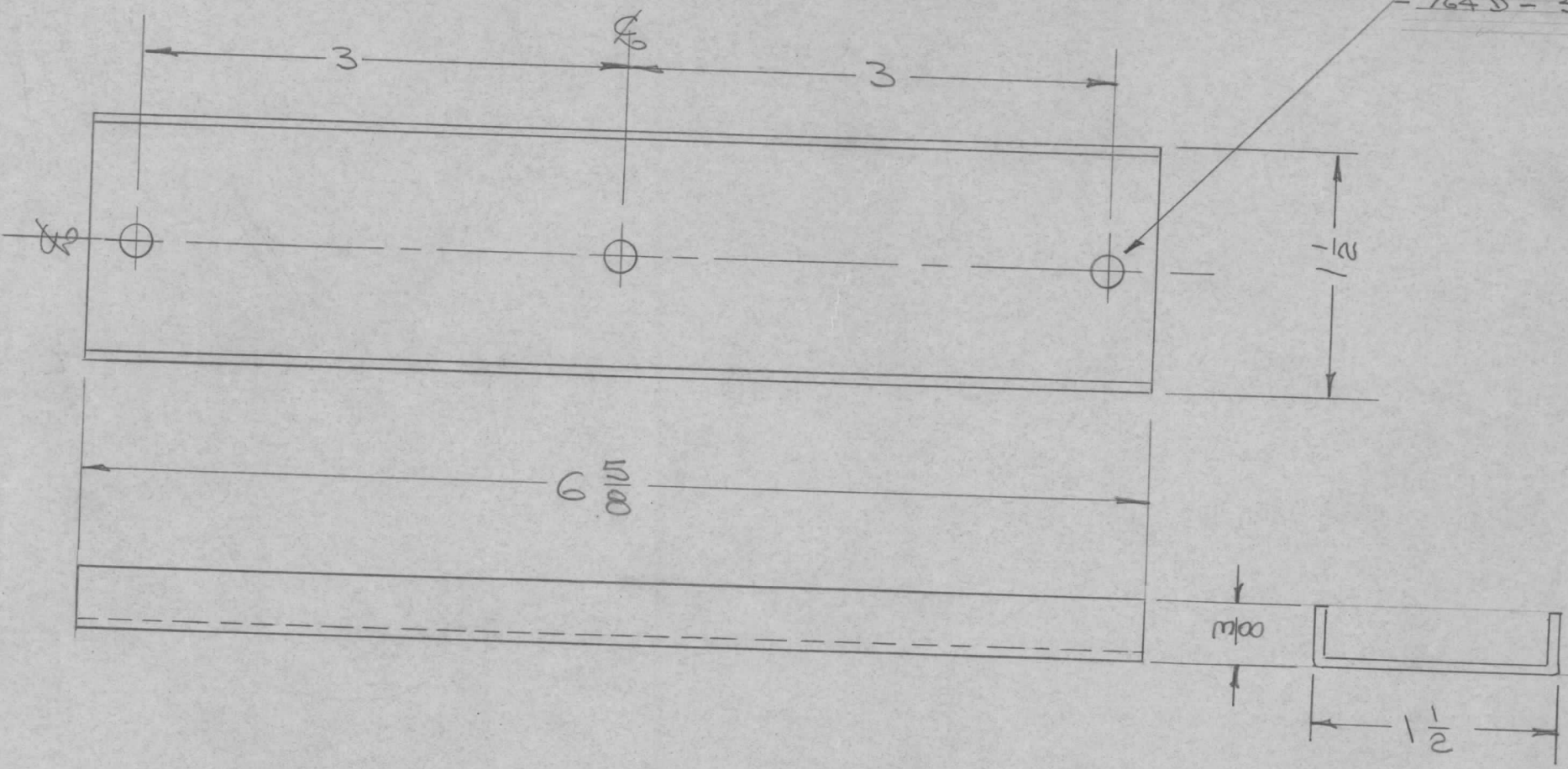
CUT HERE  
GUARANTEED  
2-66

FINISH:  
S-404 IRIDITE  
S-114 ZINC CHROMATE PRIMER  
S-115 GRAY ENAMEL

C	1	S404 IRIDITE ADDED	4/10/59	—	JLQ			REQ. ITEM	PART NO.	DESCRIPTION	SYMBOL	
B	1	7/8 WAS 1" 59/16 DA WAS 55/8 1/8 WAS 1 HOLES WERE 13/64 D.	2/1/59	732	16	JLQ	EG.	.064 THK		THE TECHNICAL MATERIEL CORP. MAMARONECK, NEW YORK		
A	1	OVERALL DIM. WAS 5 3/4	9/17/57	1	SE	JLQ		STOCK SIZE		MOLDING, TOP CORNER, FRONT (TER-5000)		
ISSUE	ITEM	CHANGED FROM	DATE	CH. NO.	DRAFTS	CHECKER	ENG. APP.	MATERIAL				
TOLERANCES			SCALE: FULL				5052-H32	164-30-57				
DEC. DIM. ± FRAC. DIM. ± ANGULAR DIM. ±			MAXIMUM ALLOWABLE TOLERANCES HAVE BEEN DETERMINED AND ANY DEVIATIONS WILL BE CAUSE FOR REJECTION. REMOVE ALL BURRS AND SHARP EDGES				TYPE & TEMPER	HEAT TREAT. SPEC.	DRAWN	CHECKED	FINAL APPROVAL	
							SEE NOTE				MS-1049 C	
							FINISH & SPEC. NO.	ELEC. DES. APP.	MECH. DES. APP.			

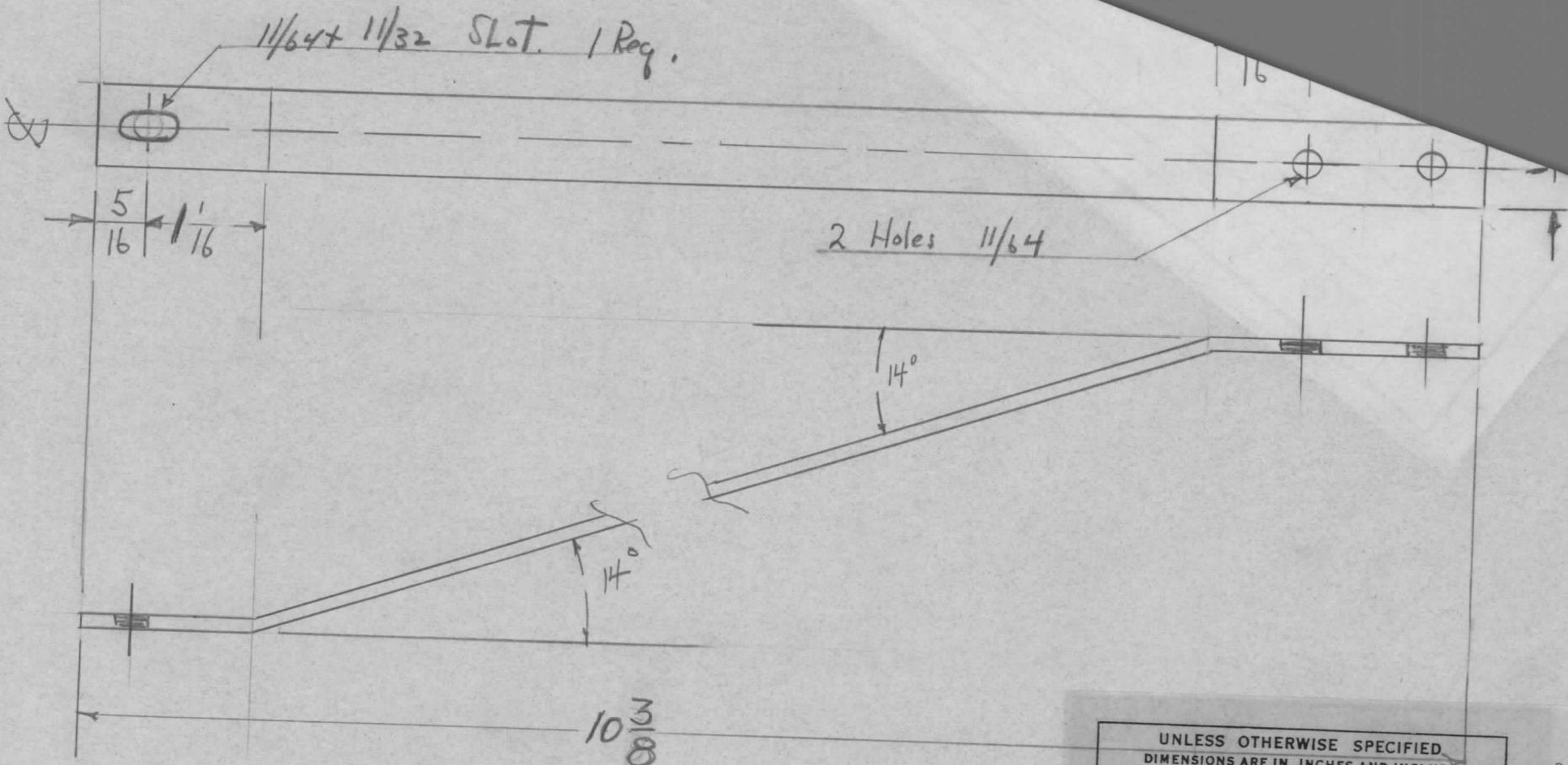


REQ. PER UNIT	MODEL	USED ON		MS-1054 A
		ASS'Y. NO.	DATE	
1	A-1397		4-29-57	
1	SBE-2		5-5-58	
1	CPP-1		5-20-60	



Ref - LD-354 (stamping)

REQ. ITEM	PART NO.	DESCRIPTION	SYMBOL						
	.064 THICK	THE TECHNICAL MATERIEL CORP. MAMARONECK, NEW YORK	SHIELD, CAPACITOR						
	STOCK SIZE								
	ALUMINUM	MODEL A-1397	(P/O SBE-1)						
	MATERIAL	5052-H32							
	TYPE & TEMPER	HEAT TREAT. SPEC.							
	S404 IRIDITE								
	FINISH & SPEC. NO.	ELEC. DES. APP.	MECH. DES. APP.						
TOLERANCES DEC. DIM. $\pm$ FRAC. DIM. $\pm$ $1/64$ ANGULAR DIM. $\pm$		SCALE: MAXIMUM ALLOWABLE TOLERANCES HAVE BEEN DETERMINED AND ANY DEVIATIONS WILL BE CAUSE FOR REJECTION. REMOVE ALL BURRS AND SHARP EDGES							
ISSUE	ITEM	CHANGED FROM	DATE	CH. NO.	DRAFTS	CHECKER	ENG. APP.	DRAWN CHECKED FINAL APPROVAL	MS-1054 A
A	1	S404 IRIDITE WAS S101 CAUSTIC DIP	12-8 59	1001		EMN			



UNLESS OTHERWISE SPECIFIED  
 DIMENSIONS ARE IN INCHES AND INCLUDE  
 CHEMICALLY APPLIED OR PLATED FINISHES

DECIMALS	TOLERANCES	FRACTIONS
.X ± .05		± 1/64
.XX ± .01		ANGLES
.XXX ± .005		± 0° 30'

CUT HERE  
 GUARANTEED  
 2-66

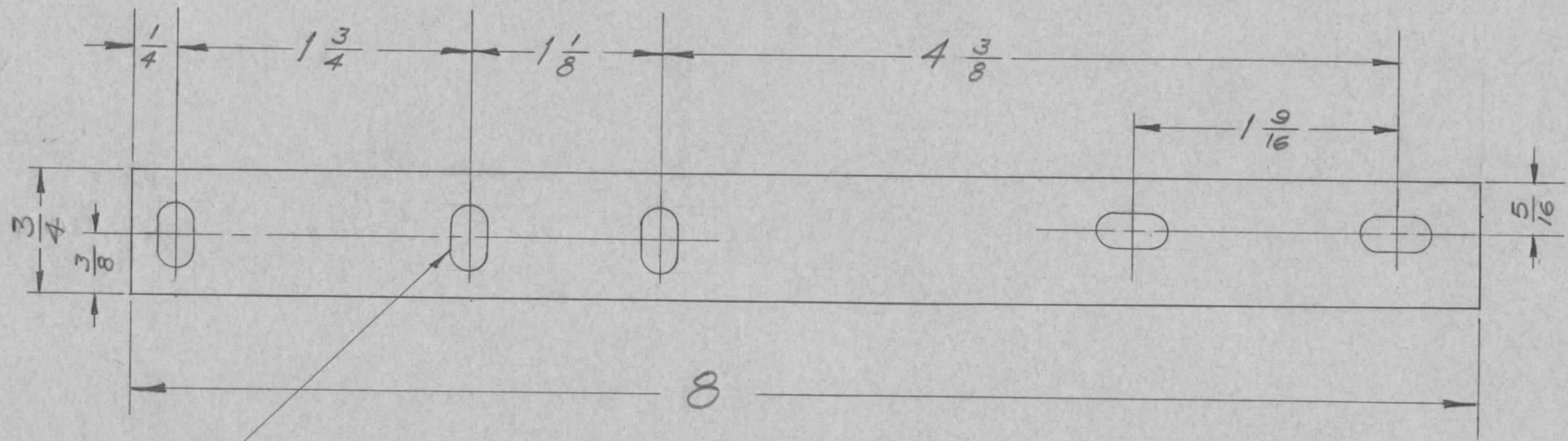
ISSUE	ITEM	CHANGED FROM	DATE	CH. NO.	DRAFTS	CHECKER	ENG. APP.	REQ. ITEM	PART NO.	DESCRIPTION	SYMBOL			
B	1	5404-IRIDITE WAS S101-CAUSTIC DIP	12-8	1001	P	EMN		3/16 X 1/2 Bar	STOCK SIZE	THE TECHNICAL MATERIEL CORP. MAMARONECK, NEW YORK	BAR Support A-1279			
A	1	STOCK SIZE WAS 1/8 X 1/2	59					ALUMINUM	MATERIAL					
TOLERANCES			SCALE:					6063-T5	TYPE & TEMPER	HEAT TREAT. SPEC.	DRAWN	CHECKED	FINAL APPROVAL	
DEC. DIM. ±			MAXIMUM ALLOWABLE TOLERANCES HAVE BEEN DETERMINED AND ANY DEVIATIONS WILL BE CAUSE FOR REJECTION. REMOVE ALL BURRS AND SHARP EDGES					S404 IRIDITE	FINISH & SPEC. NO.		ELEC. DES. APP.	MECH. DES. APP.	MS-1061	B
FRAC. DIM. ±														
ANGULAR DIM. ±														

REQ. PER UNIT	USED ON			MS-1065	A
	MODEL	ASS'Y. NO.	DATE		
1	A-1421		7-26-57		

UNLESS OTHERWISE SPECIFIED  
DIMENSIONS ARE IN INCHES AND INCLUDE  
CHEMICALLY APPLIED OR PLATED FINISHES

DECIMALS	TOLERANCES	FRACTIONS
.X ± .05		± 1/64
.XX ± .01		ANGLES
.XXX ± .005		± 0° 30'

CUT HERE  
GUARANTEED  
2-566



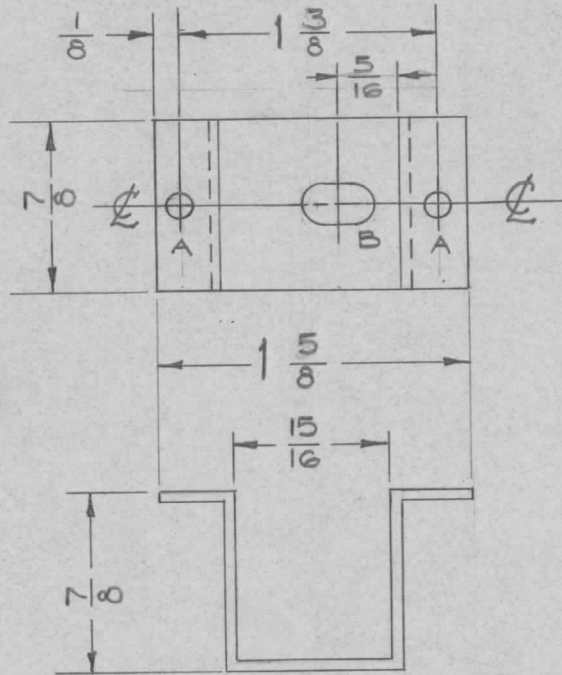
13/64 X 13/32 5 REQ.

NOTE -  
S404 IRIDITE DIP.  
S107 LACQUER DIP.

								REQ. ITEM	PART NO.	DESCRIPTION	SYMBOL	
								.081		THE TECHNICAL MATERIEL CORP.		
								STOCK SIZE		MAMARONECK, NEW YORK		
A	1	S404-IRIDITE WAS S101-CAUSTIC DIP	12-8 59	1001	P		EMN	ALUMINUM		BOTTOM EXTENSION,		
ISSUE	ITEM	CHANGED FROM	DATE	CH. NO.	DRAFTS	CHECKER	ENG. APP.	MATERIAL		BRACKET, POWER STRIP		
TOLERANCES			SCALE:				5052-H32		SC. 7-26-57	FADE	DM	
DEC. DIM. ± FRAC. DIM. ± ANGULAR DIM. ±			MAXIMUM ALLOWABLE TOLERANCES HAVE BEEN DETERMINED AND ANY DEVIATIONS WILL BE CAUSE FOR REJECTION. REMOVE ALL BURRS AND SHARP EDGES				TYPE & TEMPER	HEAT TREAT. SPEC.	DRAWN	CHECKED	FINAL APPROVAL	
							SEE NOTE					
							FINISH & SPEC. NO.	ELEC. DES. APP.	MECH. DES. APP.	MS-1065	A	



REQ. PER UNIT	USED ON			MS-1066	A
	MODEL	ASS'Y. NO.	DATE		
1	A-1421		7-26-57		



A- #29 Drill 2 Req.  
 B- 13/64 X 13/32 1 Req.

NOTE:  
 S404-IRIDITE IP  
 S101 CAUSTIC DIP

UNLESS OTHERWISE SPECIFIED  
 DIMENSIONS ARE IN INCHES AND INCLUDE  
 CHEMICALLY APPLIED OR PLATED FINISHES

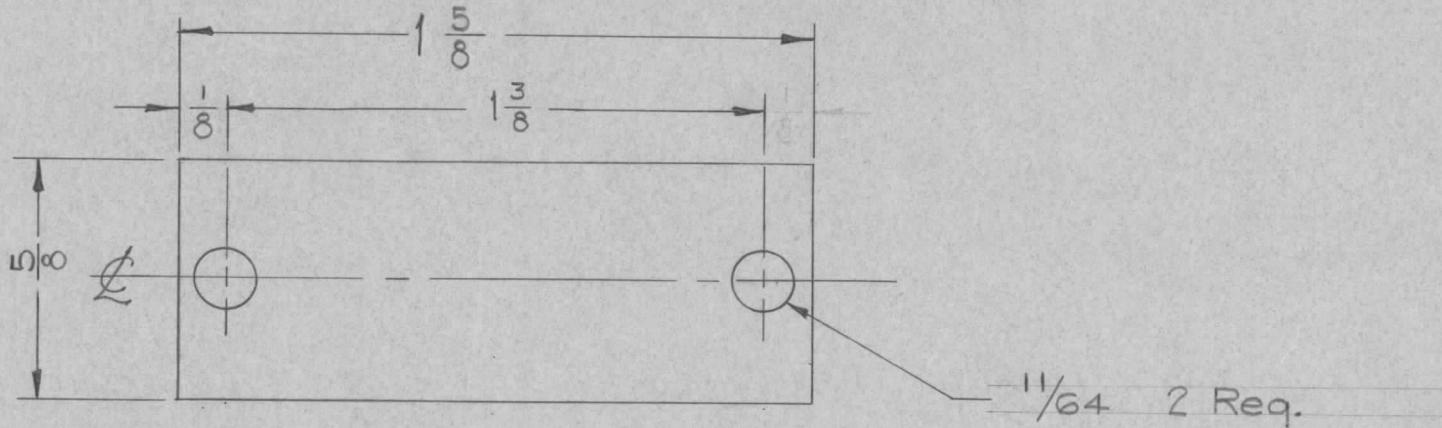
DECIMALS	FRACTIONS
.X ± .05	± 1/64
.XX ± .01	ANGLES
.XXX ± .005	± 0° 30'

TOLERANCES

CUT HERE  
 GUARANTEED  
 2-66

REQ.	ITEM	PART NO.	DESCRIPTION				SYMBOL
		.064	THE TECHNICAL MATERIEL CORP. MAMARONECK, NEW YORK				
		STOCK SIZE	BRACKET, RETAINING				
		ALUMINUM	POWER STRIP				
		MATERIAL					
A	1	5052-H32	7-26-57				
ISSUE	ITEM	CHANGED FROM	DATE	CH. NO.	DRAFTS	CHECKER	ENG. APP.
		S404-IRIDITE WAS S101-CAUSTIC DIP	12-8 59	1001	EP		EMN
TOLERANCES			SCALE:				
DEC. DIM. ±			MAXIMUM ALLOWABLE TOLERANCES HAVE BEEN DETERMINED AND ANY DEVIATIONS WILL BE CAUSE FOR REJECTION.				
FRAC. DIM. ±			REMOVE ALL BURRS AND SHARP EDGES				
ANGULAR DIM. ±			FINISH & SPEC. NO.		ELEC. DES. APP.	MECH. DES. APP.	
			SEE NOTE				MS-1066 A

REQ. PER UNIT	USED ON			MS-1067	A
	MODEL	ASS'Y. NO.	DATE		
1	A-1421		7-26-57		



UNLESS OTHERWISE SPECIFIED  
DIMENSIONS ARE IN INCHES AND INCLUDE  
CHEMICALLY APPLIED OR PLATED FINISHES

DECIMALS	TOLERANCES	FRACTIONS
.X ± .05		± 1/64
.XX ± .01		ANGLES
.XXX ± .005		± 0° 30'

CUT HERE  
GUARANTEED  
2-66

NOTE:  
S404 IRIDITE  
EPOXY LACQUER

REQ. ITEM	PART NO.	DESCRIPTION	SYMBOL						
	.064	THE TECHNICAL MATERIEL CORP. MAMARONECK, NEW YORK	RETAINING PLATE						
	STOCK SIZE								
A 1	S404-IRIDITE WAS S101-CAUSTIC DIP								
ISSUE	ITEM	CHANGED FROM	DATE	CH. NO.	DRAFTS	CHECKER	ENG. APP.		
			12-8 59	1001	SP		EMN		
TOLERANCES		SCALE:		5052-H32		7-26-57		fale	
DEC. DIM. ±		MAXIMUM ALLOWABLE TOLERANCES HAVE BEEN DETERMINED AND ANY DEVIATIONS WILL BE CAUSE FOR REJECTION.		TYPE & TEMPER		HEAT TREAT. SPEC.		DRAWN	
FRAC. DIM. ±		REMOVE ALL BURRS AND SHARP EDGES		SEE NOTE				CHECKED	
ANGULAR DIM. ±				FINISH & SPEC. NO.		ELEC. DES. APP.		MECH. DES. APP.	
								MS-1067	
								A	

UNLESS OTHERWISE SPECIFIED  
DIMENSIONS ARE IN INCHES AND INCLUDE  
CHEMICALLY APPLIED OR PLATED FINISHES

DECIMALS  
.X ± .05  
.XX ± .01  
.XXX ± .005

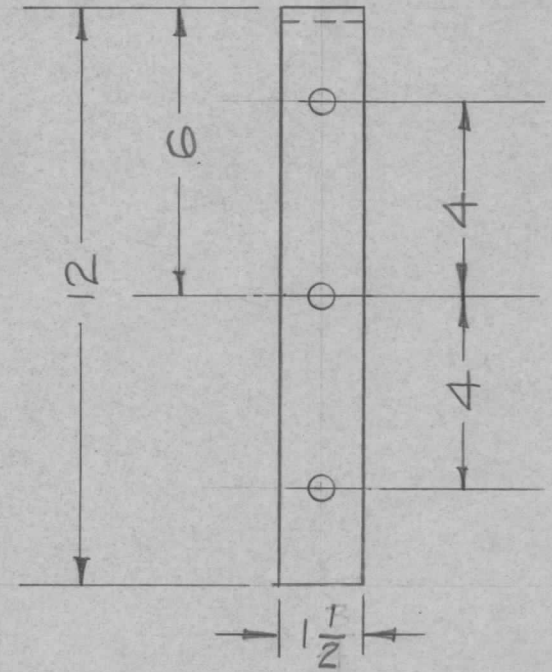
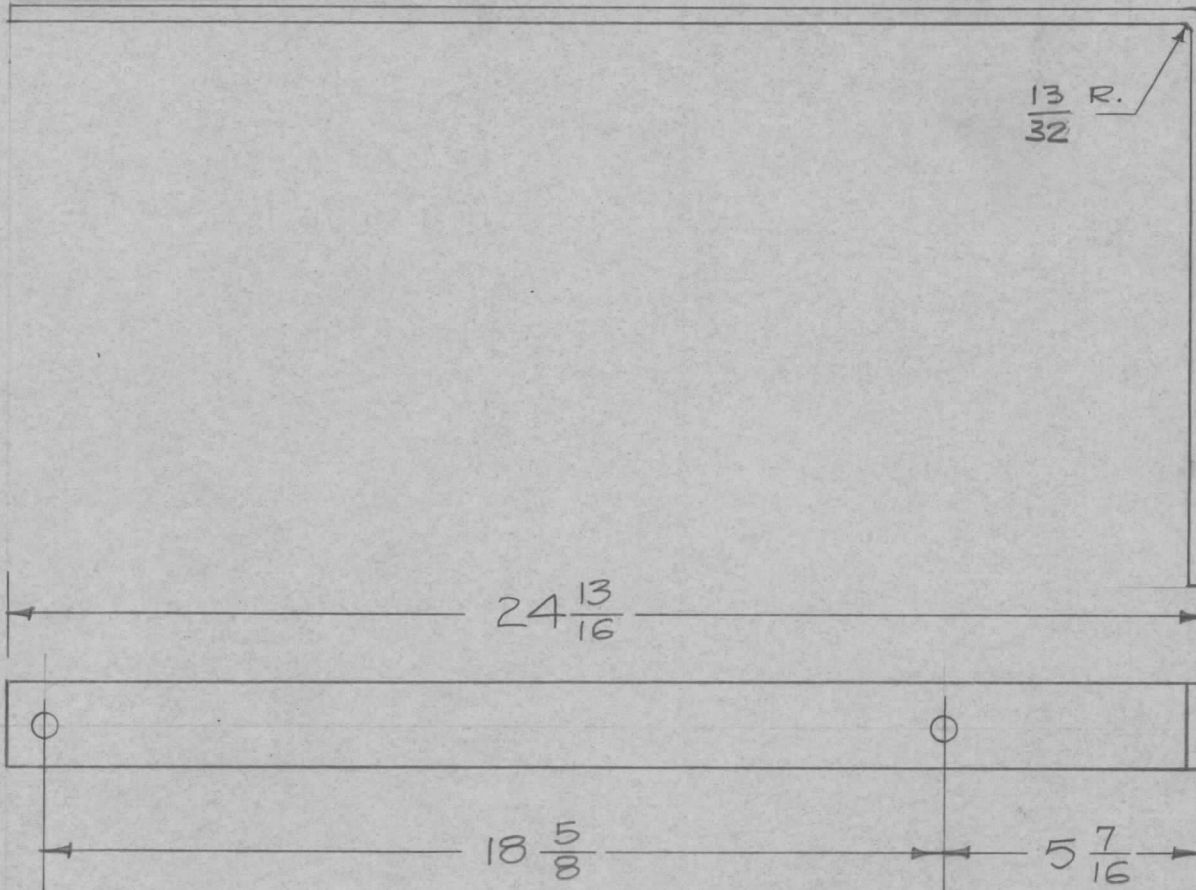
TOLERANCES

FRACTIONS  
± 1/64  
ANGLES  
± 0° 30'

CUT HERE  
GUARANTEED  
2-56

REQ. PER UNIT	USED ON		
	MODEL	ASS'Y. NO.	DATE
2	TER-5000	TD-179	5-29-57

MS-1068 B



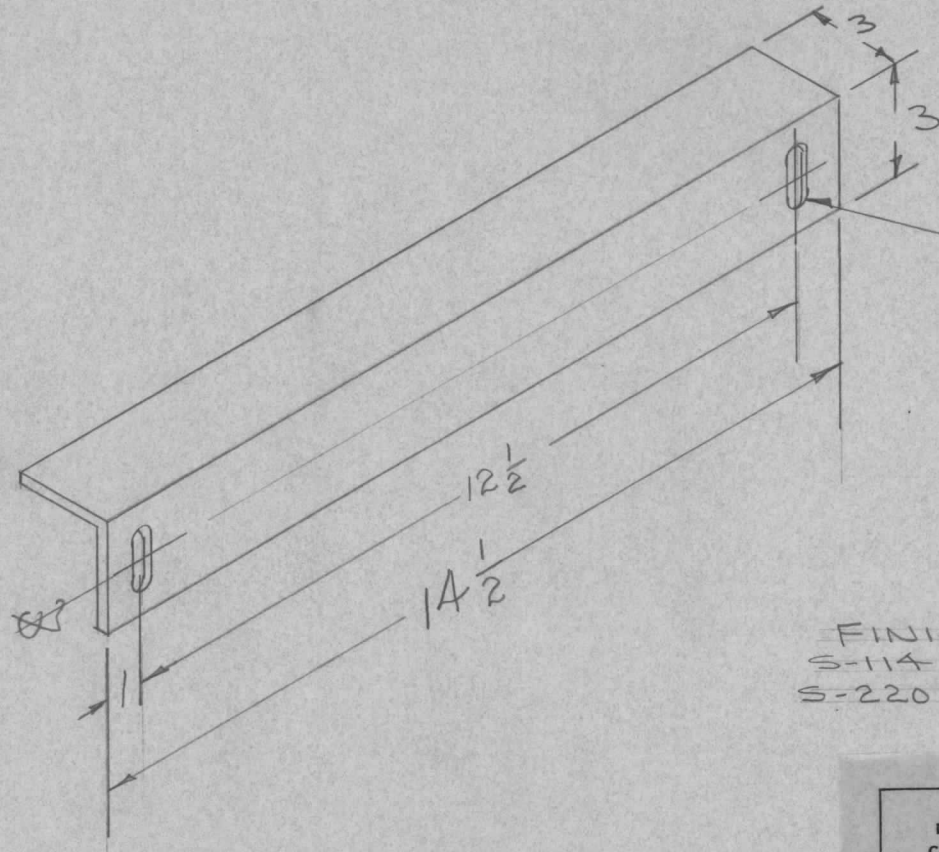
All Holes  $\frac{5}{8}$  Dia.  
5 Req.

FINISH:  
S404 IRIDITE  
S-114 ZINC CHROMATE PRIMER  
S-115 GRAY ENAMEL

ISSUE	ITEM	CHANGED FROM	DATE	CH. NO.	DRAFTS	CHECKER	ENG. APP.	REQ. ITEM	PART NO.	DESCRIPTION	SYMBOL		
B	1	S404 IRIDITE ADDED	6/16/53	—	JL					THE TECHNICAL MATERIEL CORP. MAMARONECK, NEW YORK			
A	3	6063 T5 WAS 2024 T5	9							BRACKET, TOP, MOUNTING (TER-5000)			
	2	13/32 R. WAS 1/8 R.	9										
	1	1 1/2 WAS 1 3/4	57	1									
TOLERANCES								MATERIAL					
SCALE:								6063 T5		165-29-57			
DEC. DIM. ± FRAC. DIM. ± ANGULAR DIM. ±								TYPE & TEMPER		DRAWN		CHECKED	
MAXIMUM ALLOWABLE TOLERANCES HAVE BEEN DETERMINED AND ANY DEVIATIONS WILL BE CAUSE FOR REJECTION. REMOVE ALL BURRS AND SHARP EDGES								HEAT TREAT. SPEC.		DRAWN		CHECKED	
								FINISH & SPEC. NO.		ELEC. DES. APP.		MECH. DES. APP.	
								SEE NOTE 1				MS-1068 B	



REQ. PER UNIT	USED ON			MS-1069
	MODEL	ASS'Y. NO.	DATE	
4	A-1421		7-25-57	



5/16 X 1 5/8 SLOTS 2 REQ.

FINISH:  
 S-114 - ZINC CHROMATE PRIMER  
 S-220 - RCAF GRAY SEMI-GLOSS ENAMEL.

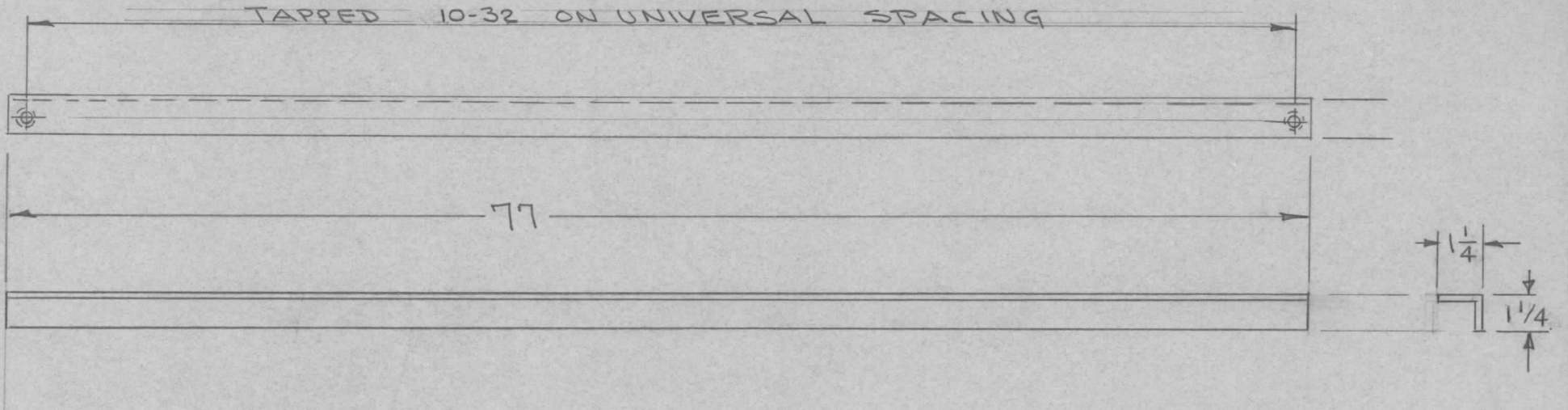
UNLESS OTHERWISE SPECIFIED DIMENSIONS ARE IN INCHES AND INCLUDE CHEMICALLY APPLIED OR PLATED FINISHES		
DECIMALS	TOLERANCES	FRACTIONS
.X ± .05		± 1/64
.XX ± .01		ANGLES
.XXX ± .005		± 0° 30'

CUT HERE  
GUARANTEED  
2-66

REF: PREMIER METAL PRODUCTS # CS-14

REQ.	ITEM	PART NO.	DESCRIPTION	SYMBOL								
		12 GAUGE	THE TECHNICAL MATERIEL CORP. MAMARONECK, NEW YORK	ANGLE, CHASSIS SUPPORT								
		STOCK SIZE										
		STEEL										
		MATERIAL										
ISSUE	ITEM	CHANGED FROM	DATE	CH. NO.	DRAFTS	CHECKER	ENG. APP.					
TOLERANCES			SCALE:									
DEC. DIM. ±			MAXIMUM ALLOWABLE TOLERANCES HAVE BEEN DETERMINED AND ANY DEVIATIONS WILL BE CAUSE FOR REJECTION.									
FRAC. DIM. ±			REMOVE ALL BURRS AND SHARP EDGES									
ANGULAR DIM. ±			TYPE & TEMPER		HEAT TREAT. SPEC.		DRAWN		CHECKED		FINAL APPROVAL	
			SEE NOTE								MS-1069	
			FINISH & SPEC. NO.		ELEC. DES. APP.		MECH. DES. APP.					

REQ. PER UNIT	USED ON			MS-1070	A
	MODEL	ASS'Y. NO.	DATE		
4	A-1421		7-25-57		



FINISH:

S-114 - ZINC CHROMATE PRIMER

S-220 - RCAF GREY SEMI-GLOSS ENAMEL

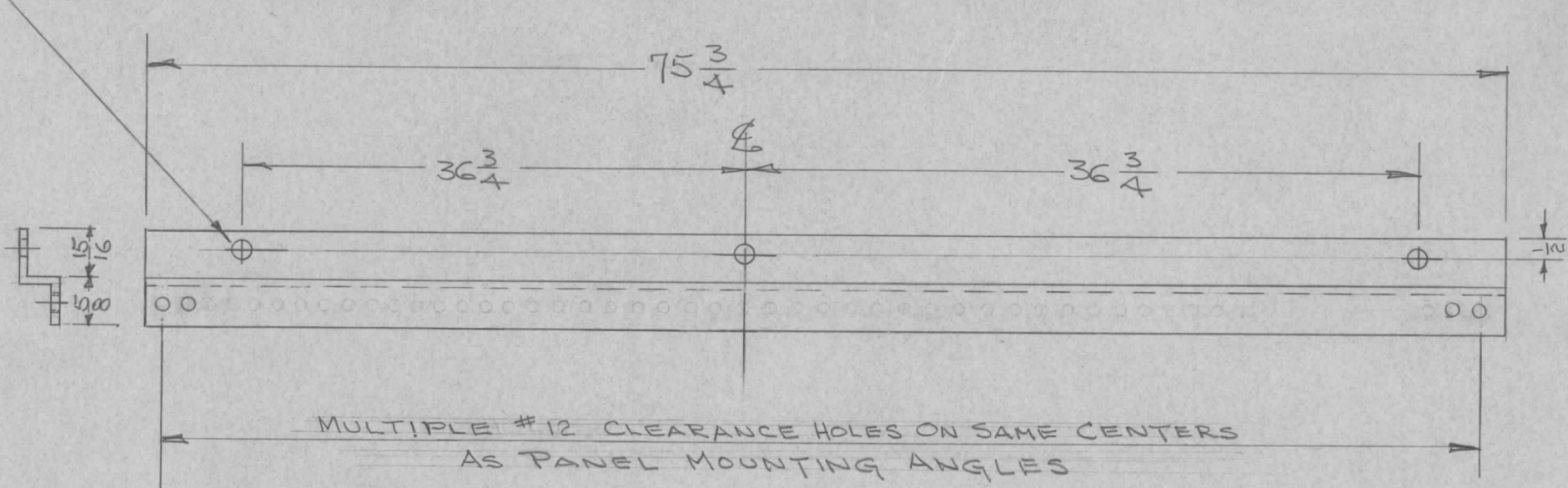
UNLESS OTHERWISE SPECIFIED DIMENSIONS ARE IN INCHES AND INCLUDE CHEMICALLY APPLIED OR PLATED FINISHES	
DECIMALS	FRACTIONS
.X ± .05	± 1/64
.XX ± .01	ANGLES
.XXX ± .005	± 0° 30'
<b>TOLERANCES</b>	

CUT HERE  
GUARANTEED  
2-66

REQ.	ITEM	PART NO.	DESCRIPTION				SYMBOL
		3/16 THICK	THE TECHNICAL MATERIEL CORP. MAMARONECK, NEW YORK				
		STEEL	MOUNTING ANGLE, PANEL				
A	2	TAPPED 10-32 WAS 12-24 DIM. 1/4 (2 PL) WAS 3/16, PER UNIT W. 2	10.8.64	12580	WB	@	✓
ISSUE	ITEM	CHANGED FROM	DATE	CH. NO.	DRAFTS	CHECKER	ENG. APP.
TOLERANCES			SCALE:				
DEC. DIM. ±			MAXIMUM ALLOWABLE TOLERANCES HAVE BEEN DETERMINED AND ANY DEVIATIONS WILL BE CAUSE FOR REJECTION.				
FRAC. DIM. ±			REMOVE ALL BURRS AND SHARP EDGES				
ANGULAR DIM. ±			TYPE & TEMPER		HEAT TREAT. SPEC.		DRAWN
			SEE NOTE				CHECKED
			FINISH & SPEC. NO.		ELEC. DES. APP.		MECH. DES. APP.
							MS-1070 A

REQ. PER UNIT	USED ON			MS-1071
	MODEL	ASS'Y. NO.	DATE	
4	A-1421		7-25-57	

13/32 D - 3 HOLES



NOTE:  
 S-114 - ZINC CHROMATE PRIMER  
 S-220 - RCAF GRAY SEMI-GLOSS ENAMEL

UNLESS OTHERWISE SPECIFIED DIMENSIONS ARE IN INCHES AND INCLUDE CHEMICALLY APPLIED OR PLATED FINISHES	
DECIMALS	FRACTIONS
.X ± .05	± 1/64
.XX ± .01	ANGLES
.XXX ± .005	± 0° 30'

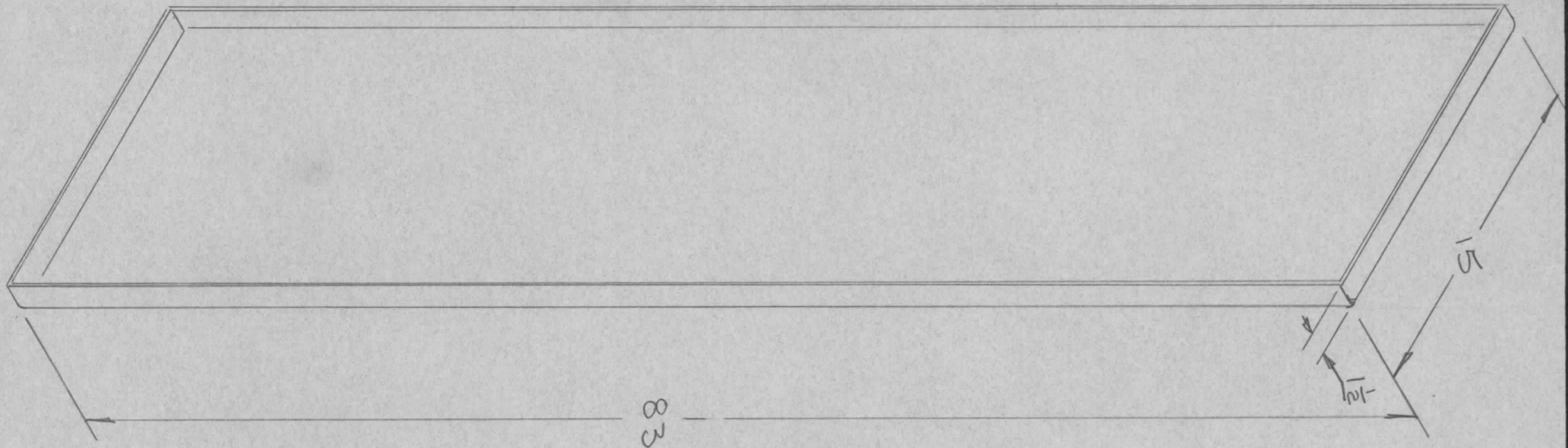
CUT HERE  
GUARANTEED  
2-66

REF: PREMIER METAL PROD. P/O PR 77

REQ. ITEM	PART NO.	DESCRIPTION	SYMBOL
	#12 GA.	THE TECHNICAL MATERIEL CORP. MAMARONECK, NEW YORK SUPPORT MEMBER, CHASSIS	
	STOCK SIZE		
	STEEL		
	MATERIAL		
ISSUE ITEM	CHANGED FROM	DATE	CH. NO. DRAFTS CHECKER ENG. APP.
TOLERANCES		SCALE:	
DEC. DIM. ±	MAXIMUM ALLOWABLE TOLERANCES HAVE BEEN DETERMINED AND ANY DEVIATIONS WILL BE CAUSE FOR REJECTION.		
FRAC. DIM. ±	REMOVE ALL BURRS AND SHARP EDGES		
ANGULAR DIM. ±		TYPE & TEMPER	HEAT TREAT. SPEC.
		DRAWN	
		CHECKED	
		FINAL APPROVAL	
	FINISH & SPEC. NO.	ELEC. DES. APP.	MECH. DES. APP.
	SEE NOTE		MS-1071



REQ. PER UNIT	USED ON			MS-1072
	MODEL	ASS'Y. NO.	DATE	
2	A-1421		7-25-57	



FINISH:  
 S-114 - ZINC CHROMATE PRIMER - (ALL SURFACES)  
 S-220 - RCAF GRAY SEMI-GLOSS ENAMEL - (ALL INSIDE SURFACES)  
 S-254 - RCAF GRAY WRINKLE ENAMEL (ALL OUTSIDE SURFACES)

UNLESS OTHERWISE SPECIFIED DIMENSIONS ARE IN INCHES AND INCLUDE CHEMICALLY APPLIED OR PLATED FINISHES	
DECIMALS	FRACTIONS
.X ± .05	± 1/64
.XX ± .01	ANGLES
.XXX ± .005	± 0° 30'
TOLERANCES	

CUT HERE  
GUARANTEED  
2-66

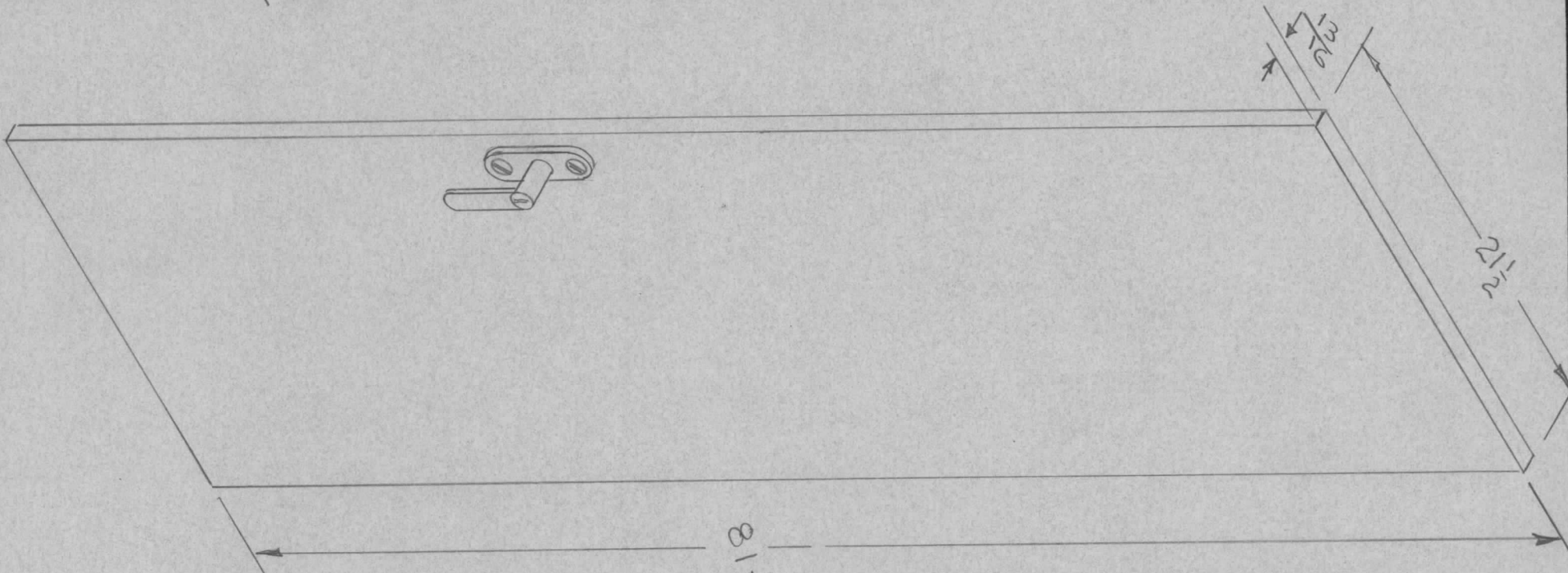
REF: PREMIER METAL PROD. # SP-77

REQ.	ITEM	PART NO.	DESCRIPTION	SYMBOL					
		HEAVY GAUGE	THE TECHNICAL MATERIEL CORP. MAMARONECK. NEW YORK						
		STOCK SIZE							
		STEEL		PANEL, SIDE					
		MATERIAL							
ISSUE	ITEM	CHANGED FROM	DATE	CH. NO.	DRAFTS	CHECKER	ENG. APP.		
TOLERANCES			SCALE:						
DEC. DIM. ±			MAXIMUM ALLOWABLE TOLERANCES HAVE BEEN DETERMINED AND ANY DEVIATIONS WILL BE CAUSE FOR REJECTION. REMOVE ALL BURRS AND SHARP EDGES						
FRAC. DIM. ±									
ANGULAR DIM. ±									
TYPE & TEMPER		HEAT TREAT. SPEC.		DRAWN		CHECKED		FINAL APPROVAL	
SEE NOTE				7/25/57		[Signature]		MS-1072	
FINISH & SPEC. NO.			ELEC. DES. APP.		MECH. DES. APP.				

**FINISH:**

- S-114 - ZINC CHROMATE PRIMER (ALL SURFACES)
- S-220 - RCAF GRAY SEMI-GLOSS (ALL INSIDE SURFACES)
- S-254 - RCAF GRAY WRINKLE ENAMEL (ALL OUTSIDE SURFACES)

REQ. PER UNIT	USED ON		MS-1073
	MODEL	DATE	
A-1421	ASS'Y. NO.	7-25-57	



MS-1073-WH

SYM	DESCRIPTION
WH	WITH HANDLE
NH	NO HANDLE

UNLESS OTHERWISE SPECIFIED DIMENSIONS ARE IN INCHES AND INCLUDE CHEMICALLY APPLIED OR PLATED FINISHES

DECIMALS	TOLERANCES	FRACTIONS
.X ± .05		± 1/64
.XX ± .01		ANGLES ± 0° 30'
.XXX ± .005		

CUT HERE GUARANTEED 2-60

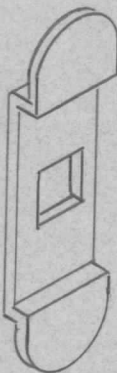
MC DWG. NO.

SEE CHART

REF: PREMIER METAL PROD. # P/O PR-77

REQ.	ITEM	PART NO.	DESCRIPTION	SYMBOL								
			THE TECHNICAL MATERIEL CORP. MAMARONECK, NEW YORK									
		HEAVY GAUGE										
		STOCK SIZE										
		STEEL	DOOR RACK									
		MATERIAL										
ISSUE	ITEM	CHANGED FROM	DATE	CH. NO.	DRAFTS	CHECKER	ENG. APP.					
TOLERANCES			SCALE:									
DEC. DIM. ±			MAXIMUM ALLOWABLE TOLERANCES HAVE BEEN DETERMINED AND ANY DEVIATIONS WILL BE CAUSE FOR REJECTION.									
FRAC. DIM. ±			REMOVE ALL BURRS AND SHARP EDGES									
ANGULAR DIM. ±			TYPE & TEMPER		HEAT TREAT. SPEC.		DRAWN		CHECKED		FINAL APPROVAL	
			SEE NOTE								MS-1073	
			FINISH & SPEC. NO.		ELEC. DES. APP.		MECH. DES. APP.					

REQ. PER UNIT	USED ON			MS-1074
	MODEL	ASS'Y. NO.	DATE	
1	A-1421		7-26-57	



UNLESS OTHERWISE SPECIFIED  
DIMENSIONS ARE IN INCHES AND INCLUDE  
CHEMICALLY APPLIED OR PLATED FINISHES

DECIMALS	FRACTIONS
.X ± .05	± 1/64
.XX ± .01	ANGLES
.XXX ± .005	± 0° 30'

TOLERANCES

CUT HERE  
GUARANTEED  
2-66

REF: PREMIER, METAL PROD P/O PR-77

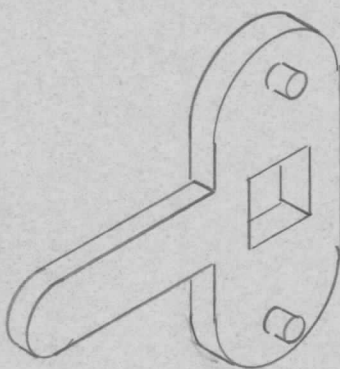
ISSUE	ITEM	CHANGED FROM	DATE	CH. NO.	DRAFTS	CHECKER	ENG. APP.	REQ. ITEM	PART NO.	DESCRIPTION	SYMBOL
										<b>THE TECHNICAL MATERIEL CORP.</b> <b>MAMARONECK, NEW YORK</b> <u>SUPPORT, CATCH</u>	
									STOCK SIZE		
									MATERIAL		
										<i>file</i> <i>dlb</i> DRAWN      CHECKED      FINAL APPROVAL	
									TYPE & TEMPER	HEAT TREAT. SPEC.	
									FINISH & SPEC. NO.	ELEC. DES. APP.	MECH. DES. APP.
											MS-1074

SCALE:  
MAXIMUM ALLOWABLE TOLERANCES HAVE BEEN DETERMINED AND ANY DEVIATIONS WILL BE CAUSE FOR REJECTION.  
REMOVE ALL BURRS AND SHARP EDGES

DEC. DIM. ±  
FRAC. DIM. ±  
ANGULAR DIM. ±



REQ. PER UNIT	USED ON			MS-1075
	MODEL	ASS'Y. NO.	DATE	
1	A-1421		7-26-57	



UNLESS OTHERWISE SPECIFIED  
 DIMENSIONS ARE IN INCHES AND INCLUDE  
 CHEMICALLY APPLIED OR PLATED FINISHES

DECIMALS		FRACTIONS
.X ± .05		± 1/64
.XX ± .01	TOLERANCES	ANGLES
.XXX ± .005		± 0° 30'

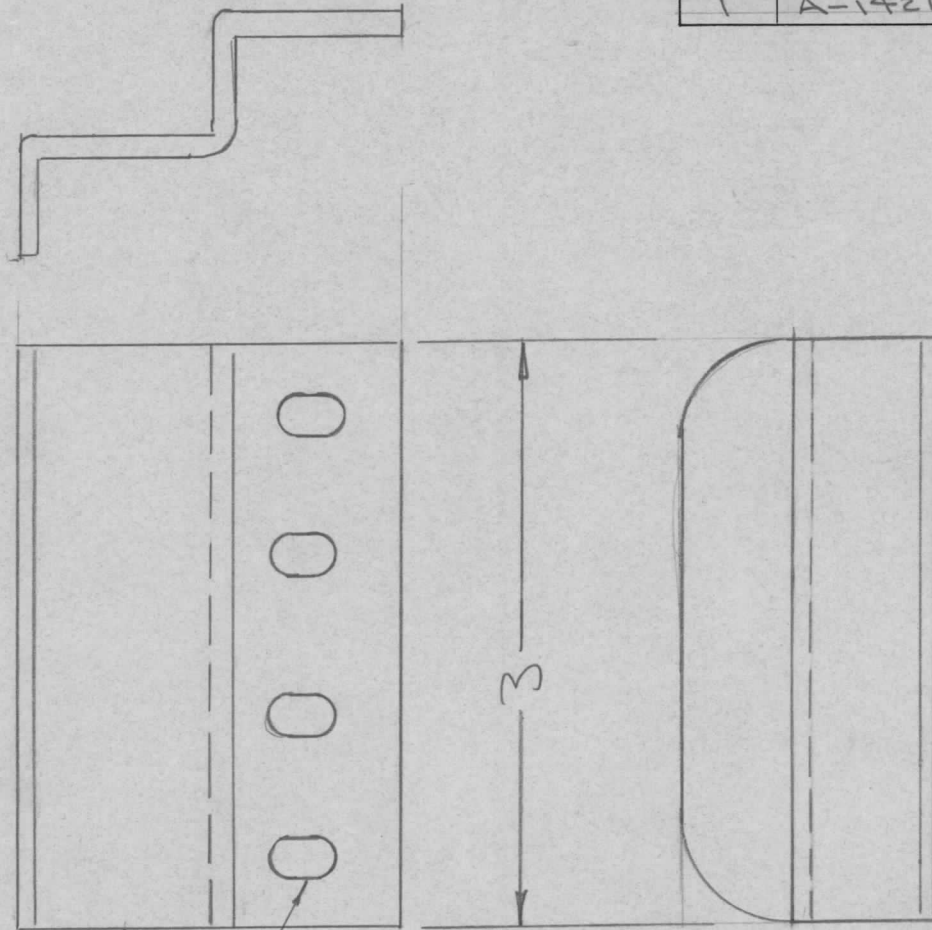
CUT HERE  
 GUARANTEED  
 2-66

REF: PREMIER METAL ROD P/O PR-77

REQ. ITEM	PART NO.	DESCRIPTION	SYMBOL
		THE TECHNICAL MATERIEL CORP. MAMARONECK, NEW YORK	
	STOCK SIZE	CATCH, DOOR	
	MATERIAL		
ISSUE	ITEM	CHANGED FROM	DATE
TOLERANCES		SCALE:	
DEC. DIM. ±	MAXIMUM ALLOWABLE TOLERANCES HAVE BEEN DETERMINED AND ANY DEVIATIONS WILL BE CAUSE FOR REJECTION.		
FRAC. DIM. ±	REMOVE ALL BURRS AND SHARP EDGES		
ANGULAR DIM. ±	TYPE & TEMPER	HEAT TREAT. SPEC.	DRAWN
			CHECKED
	FINISH & SPEC. NO.	ELEC. DES. APP.	MECH. DES. APP.
			MS-1075

REQ. PER UNIT	USED ON		
	MODEL	ASS'Y. NO.	DATE
1	A-1421		7-25-57

MS-1076



$\frac{1}{4} \times \frac{3}{8}$  SLOTS - 4 REQ.

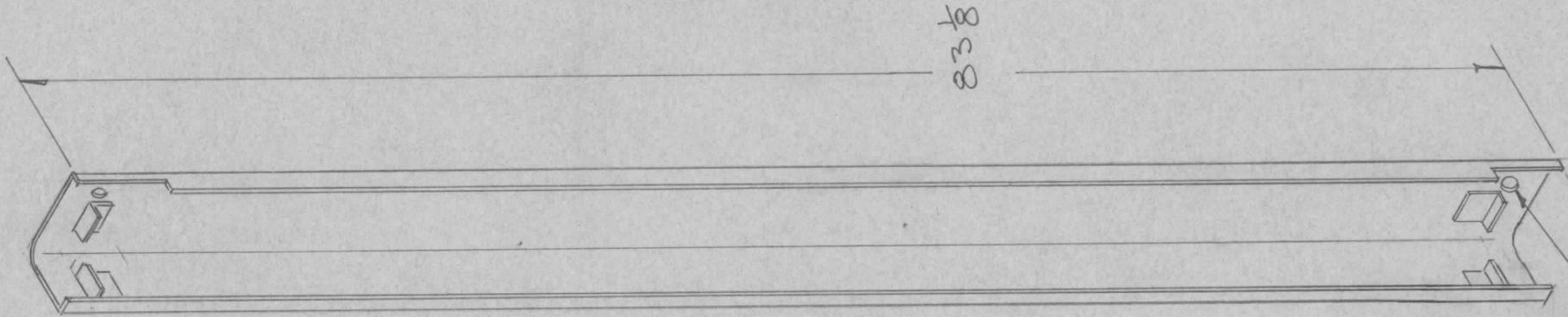
UNLESS OTHERWISE SPECIFIED DIMENSIONS ARE IN INCHES AND INCLUDE CHEMICALLY APPLIED OR PLATED FINISHES		
DECIMALS	TOLERANCES	FRACTIONS
.X ± .05		± 1/64
.XX ± .01		ANGLES ± 0° 30'
.XXX ± .005		

CUT HERE  
GUARANTEED  
2-66

REF: PREMIER METAL PROD #10 PR-77

								REQ. ITEM	PART NO.	DESCRIPTION	SYMBOL						
									12 GA. STOCK SIZE	THE TECHNICAL MATERIEL CORP. MAMARONECK, NEW YORK							
									STEEL		CATCH, STRIKE						
									MATERIAL								
ISSUE	ITEM	CHANGED FROM	DATE	CH. NO.	DRAFTS	CHECKER	ENG. APP.										
TOLERANCES			SCALE:														
DEC. DIM. ±			MAXIMUM ALLOWABLE TOLERANCES HAVE BEEN DETERMINED AND ANY DEVIATIONS WILL BE CAUSE FOR REJECTION. REMOVE ALL BURRS AND SHARP EDGES					TYPE & TEMPER	HEAT TREAT. SPEC.	DRAWN	CHECKED	FINAL APPROVAL					
FRAC. DIM. ±																	
ANGULAR DIM. ±													FINISH & SPEC. NO.	ELEC. DES. APP.	MECH. DES. APP.		
											MS-1076						

REQ. PER UNIT	USED ON			MS-1077
	MODEL	ASS'Y. NO.	DATE	
2	A-1421		7-26-57	



FINISH:  
 S-114 - ZINC CHROMATE PRIMER  
 S-220 - RCAF GRAY SEMI-GLOSS ENAMEL

MOUNTING HOLES  
 CUT HERE 3/32" - 2 HOLES  
 GUARANTEED  
 2-66

UNLESS OTHERWISE SPECIFIED DIMENSIONS ARE IN INCHES AND INCLUDE CHEMICALLY APPLIED OR PLATED FINISHES		
DECIMALS	TOLERANCES	FRACTIONS
.X ± .05		± 1/64
.XX ± .01		ANGLES
.XXX ± .005		± 0° 30'

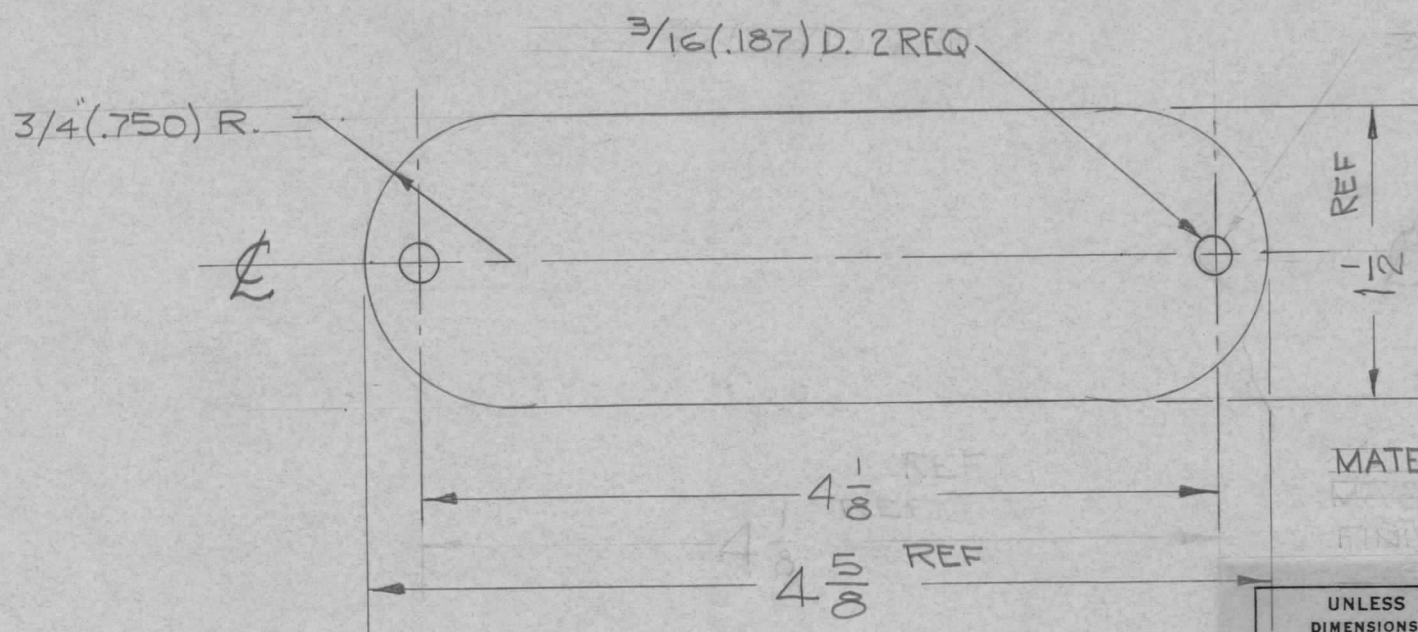
REF: PREMIER METAL PROD. P/O PR-77

REQ.	ITEM	PART NO.	DESCRIPTION	SYMBOL					
		HEAVY GAUGE	THE TECHNICAL MATERIEL CORP. MAMARONECK. NEW YORK						
		STOCK SIZE							
		STEEL		STRIP, TRIM					
		MATERIAL							
ISSUE	ITEM	CHANGED FROM	DATE	CH. NO.	DRAFTS	CHECKER	ENG. APP.		
TOLERANCES			SCALE:						
DEC. DIM. ±			MAXIMUM ALLOWABLE TOLERANCES HAVE BEEN DETERMINED AND ANY DEVIATIONS WILL BE CAUSE FOR REJECTION.						
FRAC. DIM. ±			REMOVE ALL BURRS AND SHARP EDGES						
ANGULAR DIM. ±									
TYPE & TEMPER		HEAT TREAT. SPEC.	DRAWN	CHECKED	FINAL APPROVAL				
SEE NOTE					MS-1077				
FINISH & SPEC. NO.		ELEC. DES. APP.	MECH. DES. APP.						





REQ. PER UNIT	USED ON			MS-1095
	MODEL	ASS'Y. NO.	DATE	
2	TLI - 1	A-1485	7-16-57	



MATERIAL: STEEL, CADMIUM-GALVANIZED.

UNLESS OTHERWISE SPECIFIED DIMENSIONS ARE IN INCHES AND INCLUDE CHEMICALLY APPLIED OR PLATED FINISHES		
DECIMALS	TOLERANCES	FRACTIONS
.X ± .05		± 1/64
.XX ± .01		ANGLES
.XXX ± .005		± 0° 30'

CUT HERE GUARANTEED 2-66

REF. - GENERAL ELECTRIC SUPPLY CORP. CATALOG NO. #270

ISSUE	ITEM	CHANGED FROM	DATE	CH. NO.	DRAFTS	CHECKER	ENG. APP.	REQ. ITEM	PART NO.	DESCRIPTION	SYMBOL	
								1/16 THK.		THE TECHNICAL MATERIEL CORP.		
								STOCK SIZE		MAMARONECK, NEW YORK		
								SEE NOTE		COVER, CONDULET		
								MATERIAL				
								TYPE & TEMPER	HEAT TREAT. SPEC.	DRAWN	CHECKED	FINAL APPROVAL
								NONE				MS-1095
								FINISH & SPEC. NO.		ELEC. DES. APP.	MECH. DES. APP.	

TOLERANCES  
 DEC. DIM. ±  
 FRAC. DIM. ±  
 ANGULAR DIM. ±

SCALE:  
 MAXIMUM ALLOWABLE TOLERANCES HAVE BEEN DETERMINED AND ANY DEVIATIONS WILL BE CAUSE FOR REJECTION. REMOVE ALL BURRS AND SHARP EDGES

SC. 7-16-57

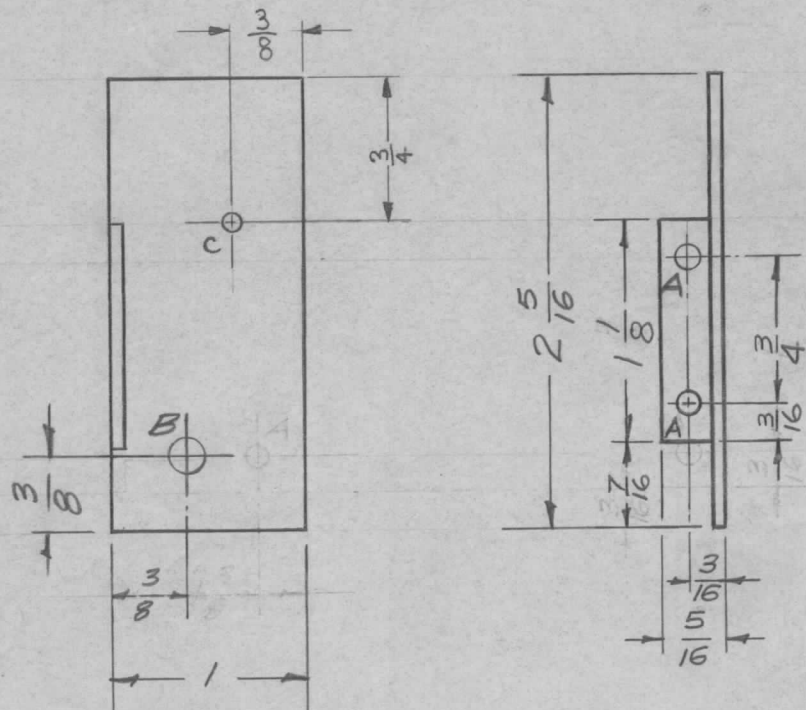
*J. H. [Signature]*  
*[Signature]*

MS-1095

MS

REQ. PER UNIT	USED ON		
	MODEL	ASS'Y. NO.	DATE
1	SBE-3	AX-204	11-30-59

MS-1097 D



A -  $\frac{1}{8}$  (.125) D. - 2 Req.  
 B -  $\frac{3}{16}$  (.187) D. - 1 Req.  
 C -  $\frac{3}{32}$  (.093) D. - 1 Req.

TO BE DELETED  
 TESTED FOR  
 11-30-57

ISSUE	ITEM	CHANGED FROM	DATE	CH. NO.	DRAFTS	CHECKER	ENG. APP.	REQ. ITEM	PART NO.	DESCRIPTION	SYMBOL		
D	1	1/4 DIM. WAS 3/16, 3/4 DIM. WAS 1", 1 1/8" WAS 1 3/8.	8-1-63	9677	MC.	JOE	WFB			THE TECHNICAL MATERIEL CORP. MAMARONECK, NEW YORK SHIELD, TRIMMER			
C	1	1 "A" HOLE DELETED 1 "C" HOLE ADDED	11/11/60	1738	MF.	JLE	PHL		.051 THK.				
B	1	REINSTATED FROM OBS. CONDITION - SBE-3 ADDED	11/30/59	2	16				STOCK SIZE				
A	1	One "A" & One "B" Hole Added	9/17/51	1	16	JOE	UM		ALUMINUM				
									MATERIAL				
TOLERANCES								5052-H32		16 3/4/57	JLE	WFB	
SCALE: FULL								TYPE & TEMPER		HEAT TREAT. SPEC.	DRAWN	CHECKED	FINAL APPROVAL
DEC. DIM. ± FRAC. DIM. ± 1/64 ANGULAR DIM. ±								S404-IRIDITE			JOE		MS-1097 D
MAXIMUM ALLOWABLE TOLERANCES HAVE BEEN DETERMINED AND ANY DEVIATIONS WILL BE CAUSE FOR REJECTION. REMOVE ALL BURRS AND SHARP EDGES								FINISH & SPEC. NO.		ELEC. DES. APP.	MECH. DES. APP.		