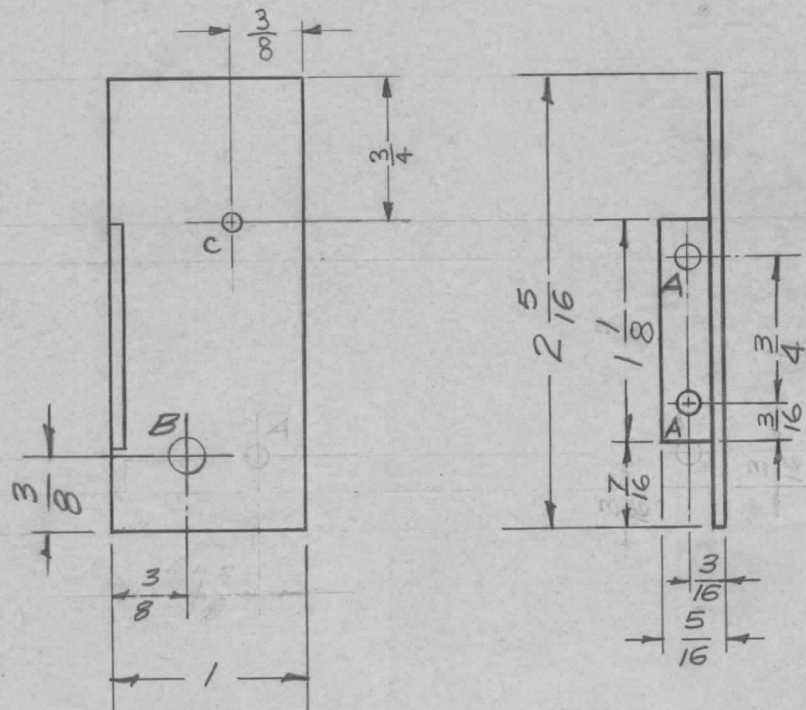


REQ. PER UNIT	USED ON		
	MODEL	ASS'Y. NO.	DATE
1	SBE-3	AX-204	11-30-59

MS-1097 D



A -  $\frac{1}{8}$  (.125) D. - 2 Req.  
 B -  $\frac{3}{16}$  (.187) D. - 1 Req.  
 C -  $\frac{3}{32}$  (.093) D. - 1 REQ.

TO BE DELETED  
 TESTED FOR  
 11-30-59

ISSUE	ITEM	CHANGED FROM	DATE	CH. NO.	DRAFTS	CHECKER	ENG. APP.	REQ. ITEM	PART NO.	DESCRIPTION	SYMBOL						
D	1	1/4 DIM. WAS 3/16, 3/4 DIM. WAS 1", 1 1/8" WAS 1 3/8.	8-1-63	9677	MC.	JOB	WFB			<b>THE TECHNICAL MATERIEL CORP.</b> MAMARONECK, NEW YORK <b>SHIELD, TRIMMER</b>	D						
C	1	1 "A" HOLE DELETED 1 "C" HOLE ADDED	11/11/60	1738	MF.	JLE	PHL	.051 THK.									
B	1	REINSTATED FROM OBS. CONDITION - SBE-3 ADDED	11/30/59	2	16			STOCK SIZE									
A	1	One "A" & One "B" Hole Added	9/17/51	1	16	QB	UM	ALUMINUM									
TOLERANCES								MATERIAL									
SCALE: FULL								5052-H32		16 3/4/57		JLE	WFB				
DEC. DIM. ± FRAC. DIM. ± 1/64 ANGULAR DIM. ±								TYPE & TEMPER		HEAT TREAT. SPEC.		DRAWN		CHECKED		FINAL APPROVAL	
MAXIMUM ALLOWABLE TOLERANCES HAVE BEEN DETERMINED AND ANY DEVIATIONS WILL BE CAUSE FOR REJECTION. REMOVE ALL BURRS AND SHARP EDGES								S404-IRIDITE		16		QB		MS-1097		D	
								FINISH & SPEC. NO.		ELEC. DES. APP.		MECH. DES. APP.					