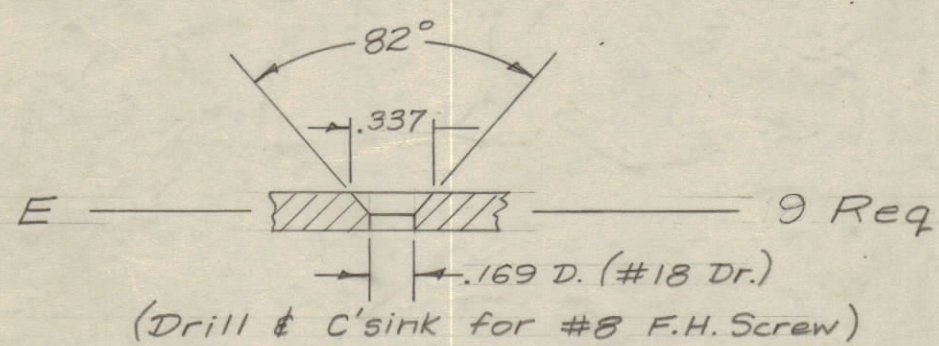
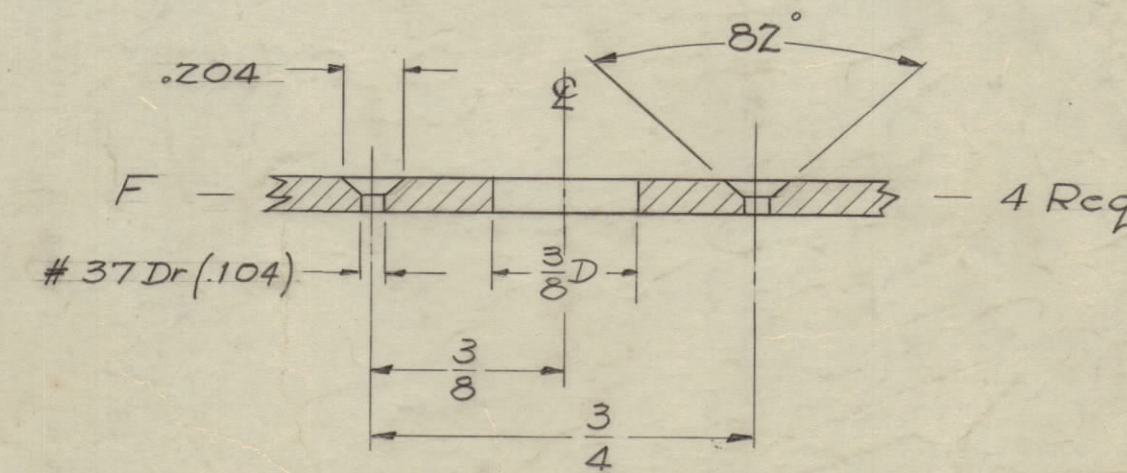
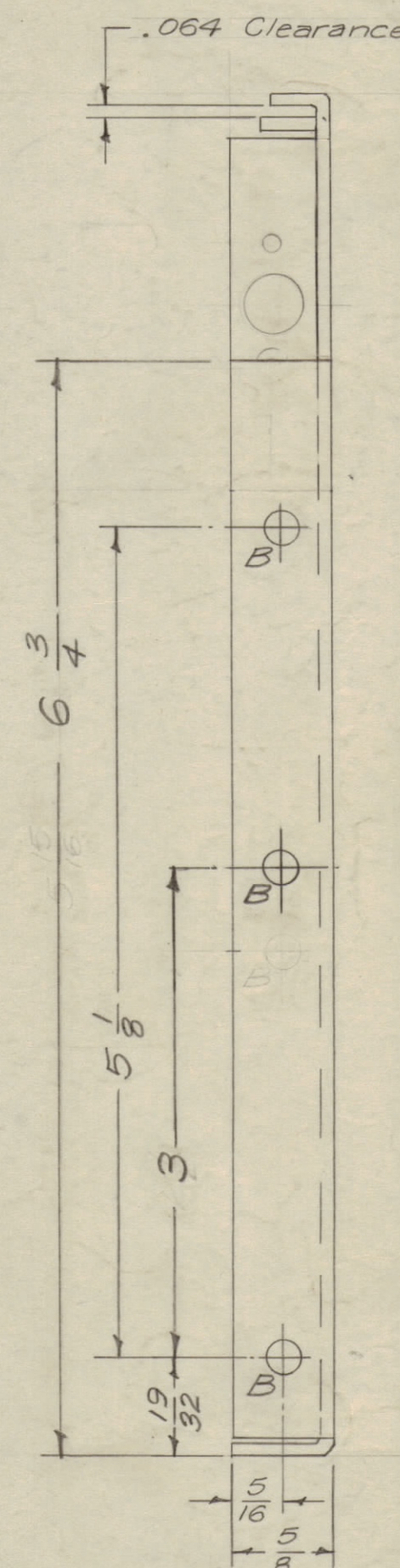
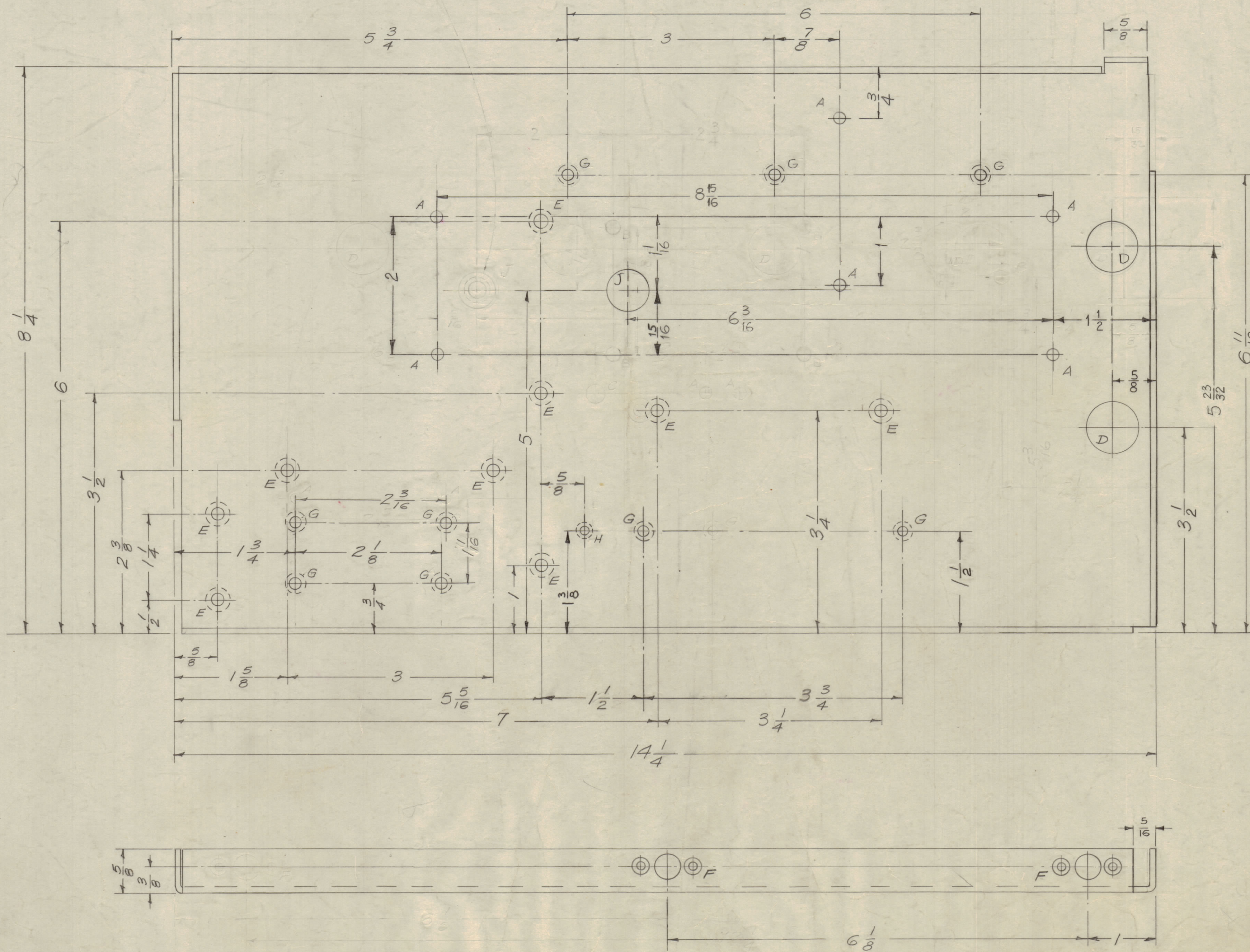
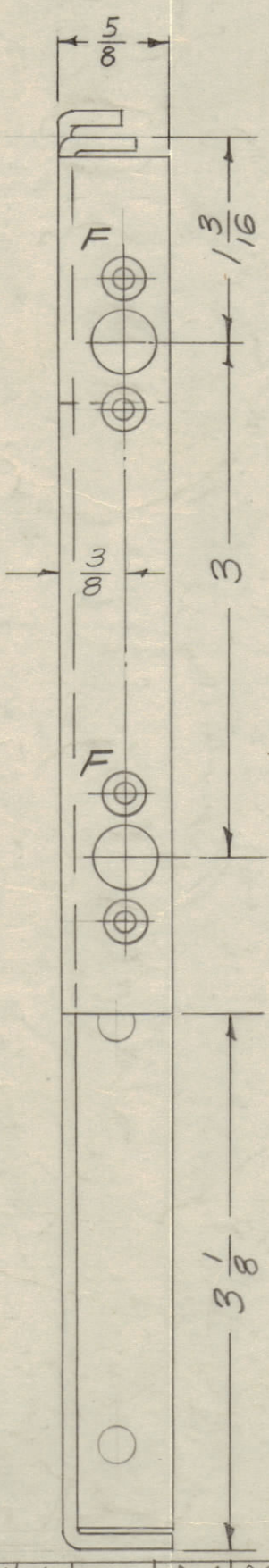
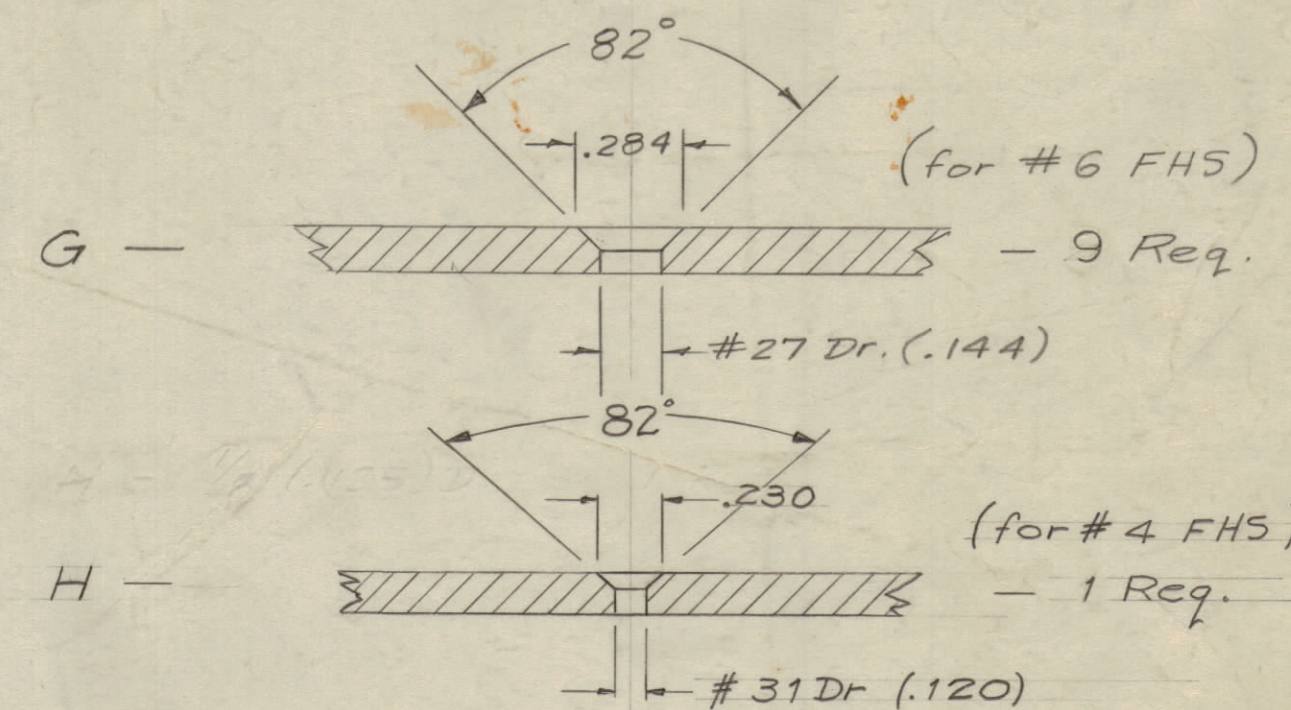
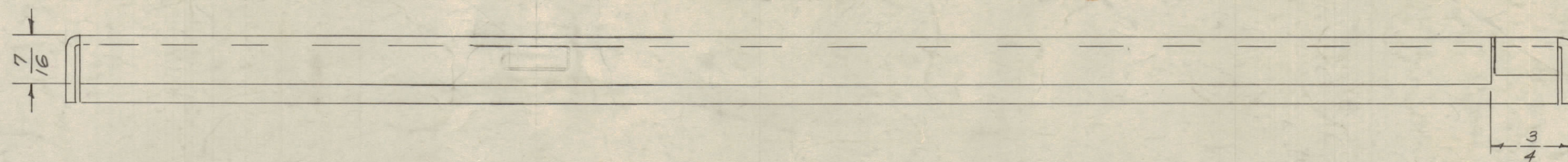


IF IT IS FOUND DESIRABLE TO CHANGE ANY TOLERANCE OR OTHER DETAIL SPECIFIED ON THIS DRAWING NOTIFY THE PURCHASER PROMPTLY.
 MAXIMUM ALLOWABLE TOLERANCES HAVE BEEN DETERMINED AND DEVIATIONS WILL BE CAUSE FOR REJECTION.
 REMOVE ALL BURRS AND SHARP EDGES

- A - $\frac{3}{16}$ (.187) D - 6 Req.
- B - $\frac{13}{64}$ (.203) D - 3 Req.
- D - $\frac{3}{4}$ (.750) D - 2 Req.



J - 5/8 DIA. - 1 Req.



ISSUE	ITEM	CHANGED FROM	DATE	CH. NO.	DRAFTS	CHECKER	ENG. APP.
N	1	2 1/2" Holes - 413 - RELOCATED	4/24/61	4157	JMM	OCB	
M	1	3" E Holes changed to G Holes	3-30-61	4525	JMM	OCB	
L	2	3" B HOLES ADDED	2-15-61	4147	JMM	OCB	
K	1	1" B HOLE RELOCATED	2-15-61	1913	JMM	OCB	
J	1	3/16 DIM WAS 3/8	3-24-60	1913	JMM	OCB	
I	1	3-407 YEL. TRITONITE WAS S-101 CAUSTIC DIP	7/9/59	1001	AB	EMN	
H	3	REFERENCES DIMS	5/1/59	961	WJ	OCB	
G	2	ADDED (G) 'A' HOLES QUAN. 'D' WAS '5'					
F	1	'D' hole relocated					
E	2	'I' detail added					
D	7	'B' hole added					
C	1/6	'B' holes deleted					
B	7	'E' holes added					
A	4	'D' NT 129-524-A added					
	3	'C' hole deleted					
	2	'A' holes deleted					
	1	'H' hole was 1/8 (.125) D.					
F	1	DRILLED (D) 'F' SET OF HOLES	1/16/63	445	AW	OCB	
E	1	RAULED SURF. BOTTOM EDGE	9/4/64	5	K	OCB	
D	4	FOUR 'G' HOLES WERE 'A'					
C	1	'H' HOLE ADDED					
B	3	'B' HOLE MOVED	11/19/57	4	K	OCB	
A	2	'D' HOLE MOVED					
	1	'B' HOLE MOVED (ENR. VIEW)					
C	1	NOTCH ADDED ON FRONT LIP	9/16/57	3	K	OCB	
B	1	TWO 'A' HOLES ADDED	9/12/57	2	K	OCB	
A	1	'G' HOLES ADDED	9/10/57	1	K	OCB	

T	S	R	P
ADD. DIM. 7/8 FOR 2 HOLES	9/16/71	20439	GE
1 1/2 X 1 1/2" OUTPUT DELETED, TOP HOLE	4-22-66	16117	OCB
DIM 1 3/8 B ADD. 1 3/8 WAS 1 1/2	1.21.65	13213	OCB
1 1/2" HOLE DELE. 5/16" NOTCH ADD.	7.9.64	11689	OCB

REQ. PER UNIT	MODEL	PROJECT NO.	ASSY. NO.	DATE
1	SBE-3	AO-101		11-25-59
1	SBE-2	A-1516		5-2-58
1	SBE-1			7-15-57

REQ. ITEM	PART NO.	DESCRIPTION	SYMBOL
	.081 Thk.	THE TECHNICAL MATERIEL CORP.	
	STOCK SIZE	MAMARONECK, NEW YORK	
	Aluminum	SIDE PLATE, RIGHT	
	MATERIAL	SBE-1	
	5052-H32		
	TYPE & TEMPER	167-15-57	OCB
	HEAT TREAT. SPEC.	8-936	MS-1093 T

MS-1093 T