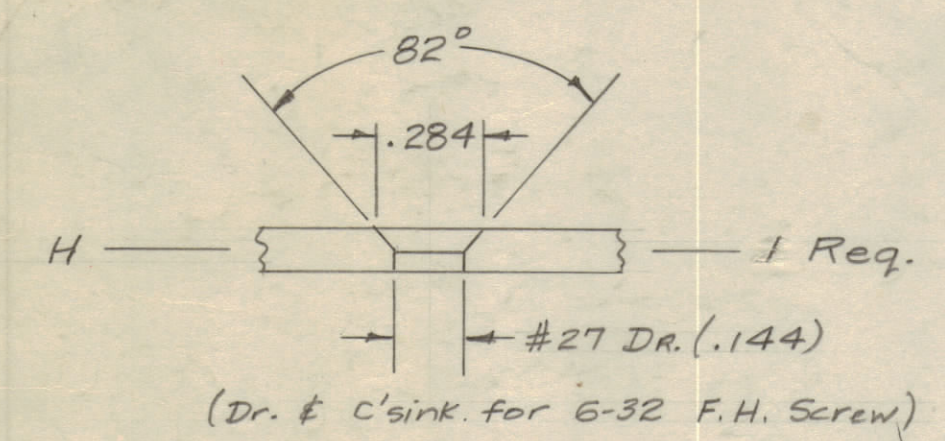


IF IT IS FOUND DESIRABLE TO CHANGE ANY TOLERANCE OR OTHER DETAIL SPECIFIED ON THIS DRAWING NOTIFY THE PURCHASER PROMPTLY.
 MAXIMUM ALLOWABLE TOLERANCES HAVE BEEN DETERMINED AND DEVIATIONS WILL BE CAUSE FOR REJECTION.
 REMOVE ALL BURRS AND SHARP EDGES

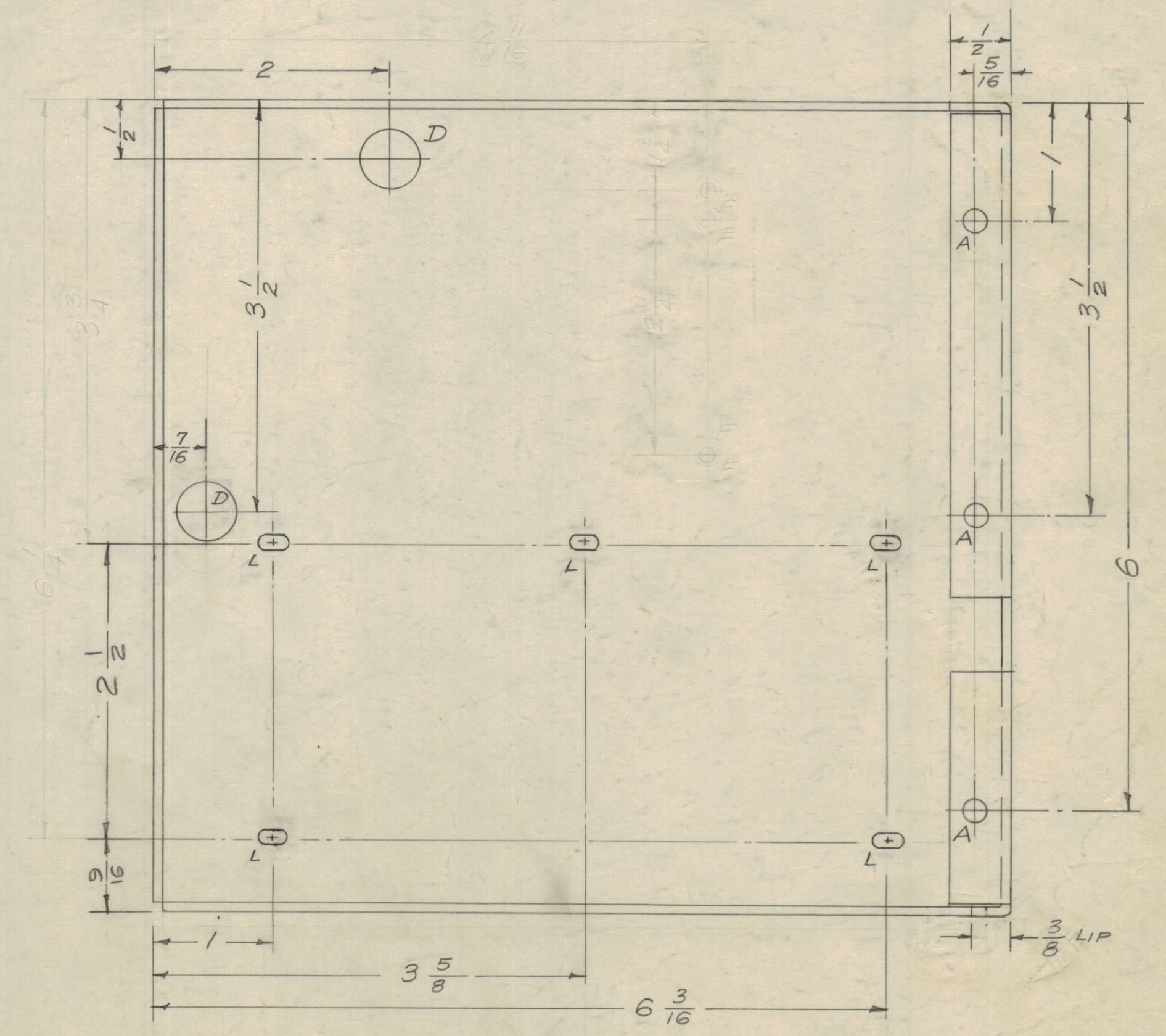
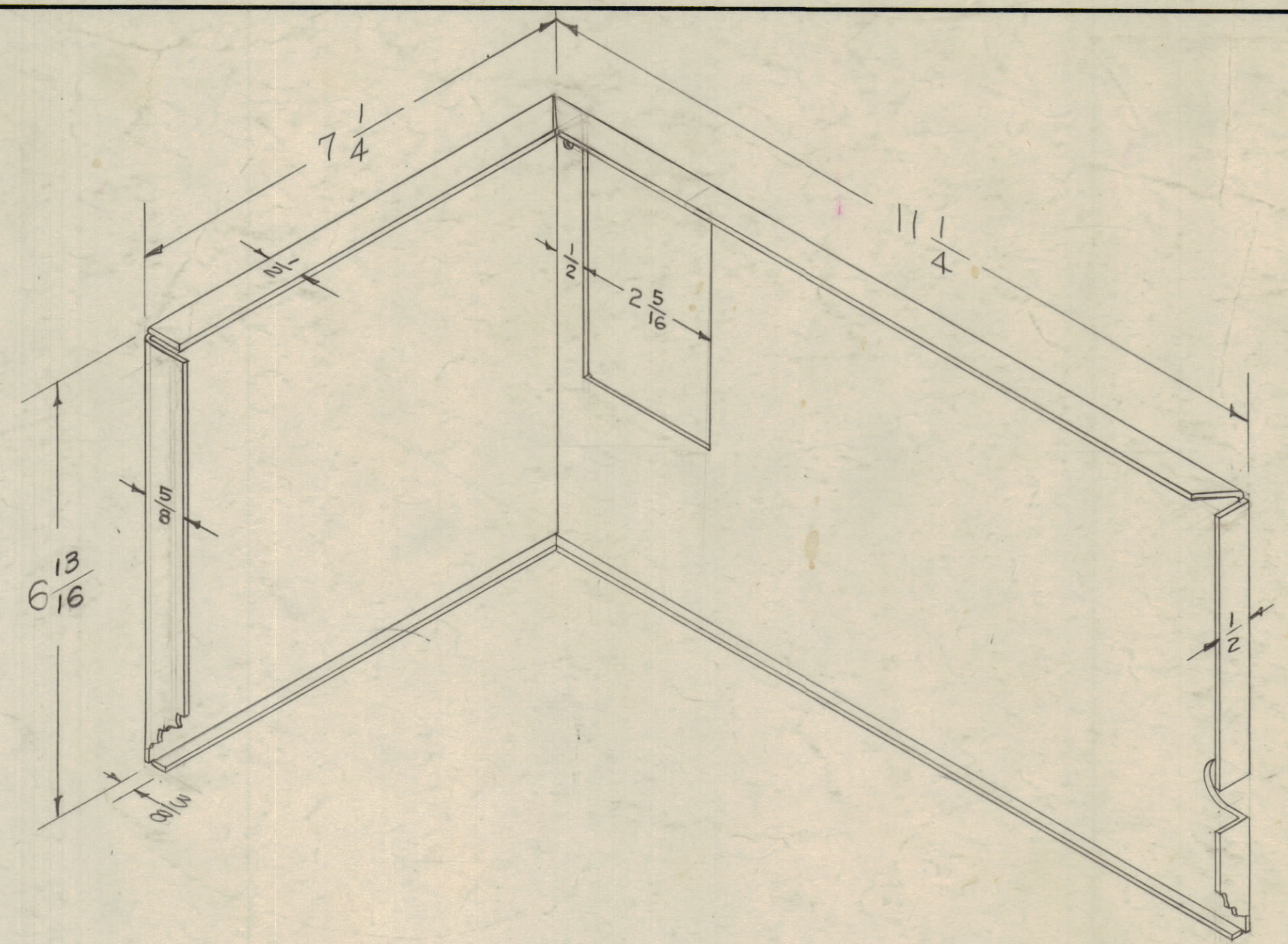
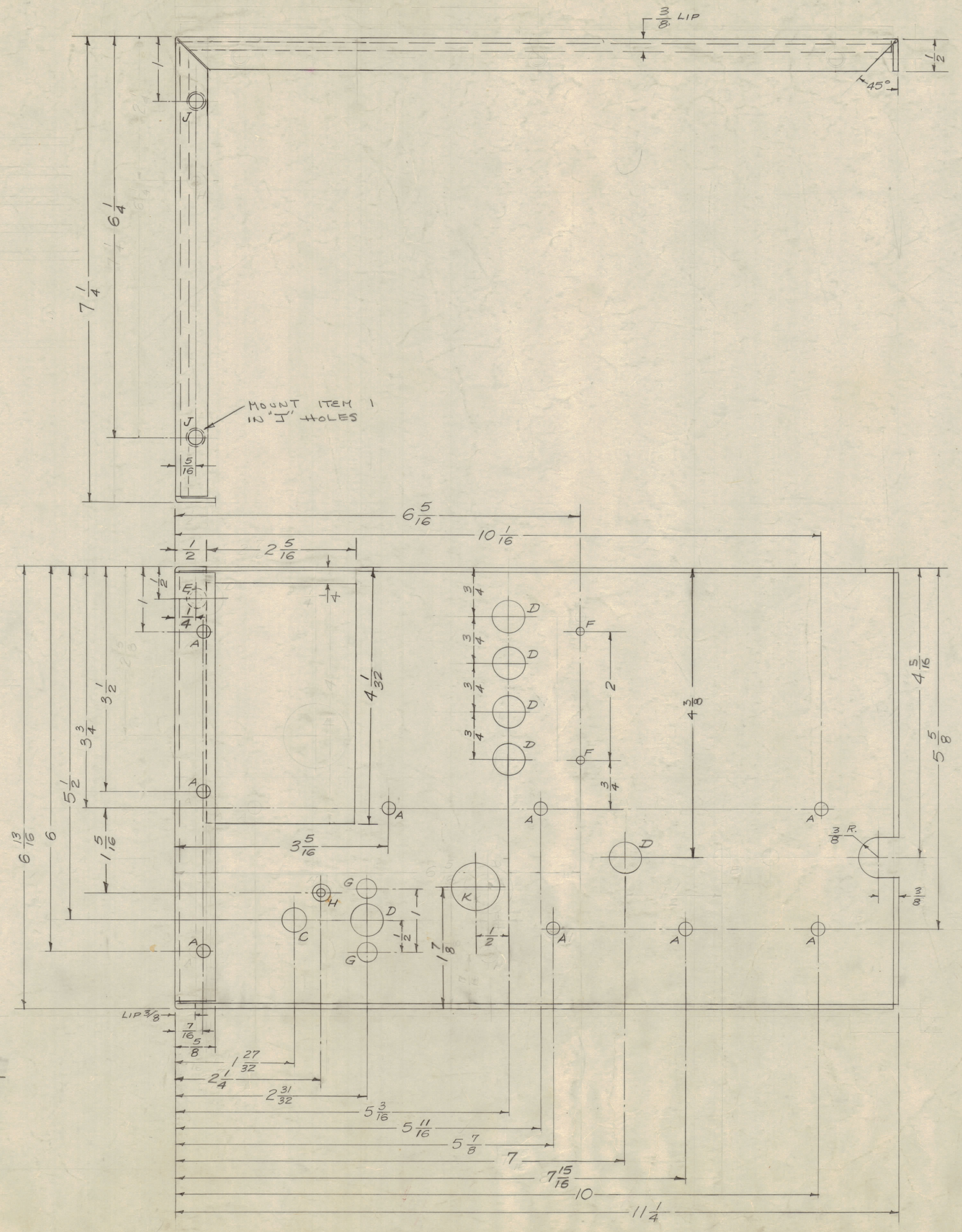
- A - $\frac{13}{64}$ (.203) D. — 12 Req.
- B - DELE.
- C - $\frac{3}{8}$ (.375) D. — 1 Req.
- D - $\frac{1}{2}$ (.500) D. — 8 Req.
- E - $\frac{5}{16}$ (.312) D. — 1 Req.

- F - $\frac{1}{8}$ (.125) D. — 2 Req.
- G - $\frac{5}{16}$ (.312) D. — 2 Req.



J - $\frac{191}{194}$ DIA #11 PUNCH (NT-129-632-4) - 2 REQ
 (Dr. & C'sink for 3/4" DIA)

- K - $\frac{3}{4}$ (.750) D. — 1 Req.
- L - $\frac{13}{64} \times \frac{13}{32}$ SLOTTED - 5 Req.



ISSUE	ITEM	CHANGED FROM	DATE	CN. NO.	DRAFTS	CHECKER	ENG. APP.
G	1	3/8 SLOT REMOVED, 4 3/8 ADDED	8/15/58	15298	RU		
F	1	2 1/2" LIP DELETED	8/17/58	2814	RU		
E	1	2 1/2" LIP DELETED	8/17/58	2814	RU		
D	1	4 1/2 WAS 4 (CUTOUT)	9/17/58	4	16		
C	1	3/8 LIP WAS 5/16	11/19/58	3	16		
B	3	"A" HOLE ADDED (WAS 1/2)	11/19/58	2	16		
A	3	"E" Hole was 3/16"	9/16/57	1	16		

ALL OTHERS	DEC. DIM. \pm	FRAC. DIM. \pm	ANGULAR DIM. \pm	DRILL PUNCH, COMMERCIAL STOCK SIZES AND MANUFACTURERS TOLERANCES ARE NOT INCLUDED.
		$\pm 1/64$		

REQ. PER UNIT	MODEL	PROJECT NO.	ASSY. NO.	DATE	DESCRIPTION	SYMBOL
2	NT-129-632-4				SWAGLE NUT, ROUND	
1	SBE-3	AX-204	11-30-59			
1	SBE-2	A-1516	5-2-58			
1	SBE-1	380	6-27-57			

MS-1090 G