

IF IT IS FOUND DESIRABLE TO CHANGE ANY TOLERANCES OR OTHER DETAIL SPECIFIED ON THIS DRAWING NOTIFY THE PURCHASER PROMPTLY.

MAXIMUM ALLOWABLE TOLERANCES HAVE BEEN DETERMINED AND DEVIATIONS WILL BE ONE FOR REJECTION. REMOVE ALL BURS AND SHARP EDGES

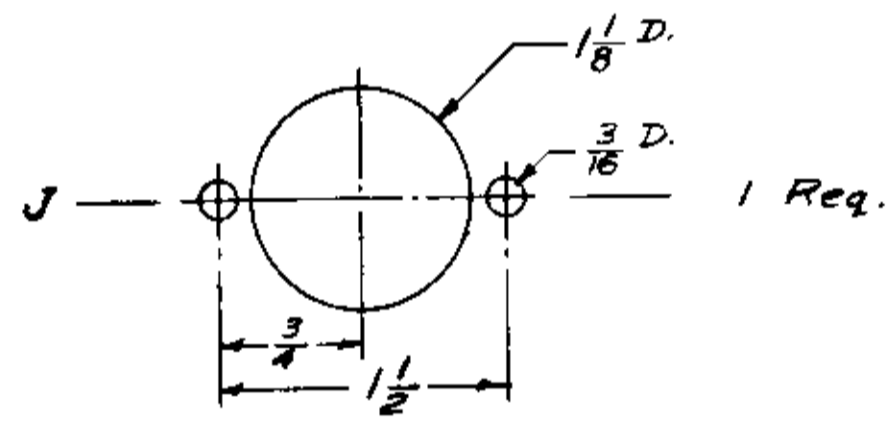
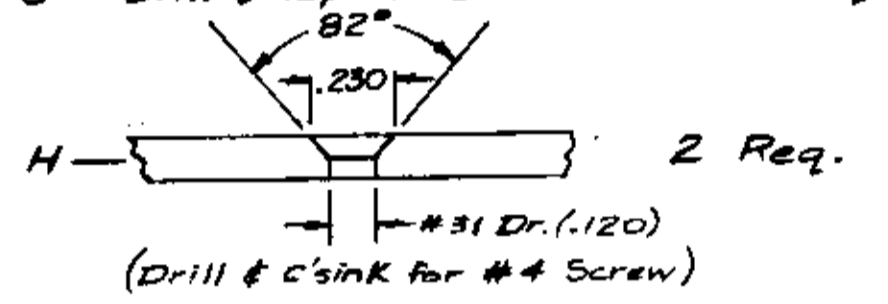
NOTICE TO PERSONS RECEIVING THIS DRAWING

THE TECHNICAL MATERIEL CORPORATION claims proprietary right in the material disclosed hereon. This drawing is issued in confidence for engineering information only and may not be reproduced or used to manufacture anything shown hereon without permission from THE TECHNICAL MATERIEL CORPORATION to the user. This drawing is loaned for mutual assistance and is subject to recall at any time.

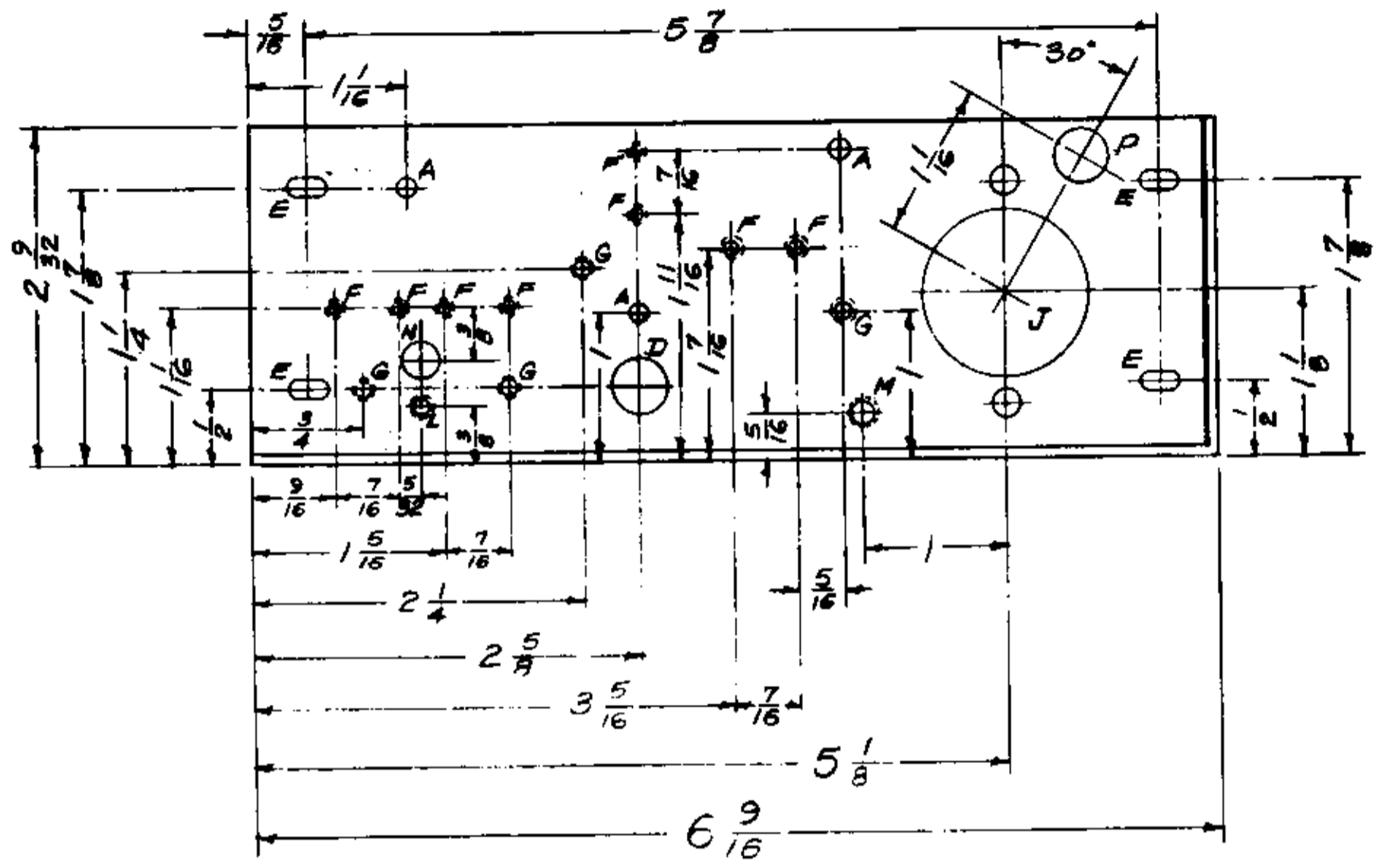
Property of:

THE TECHNICAL MATERIEL CORPORATION
MAMARONECK, NEW YORK

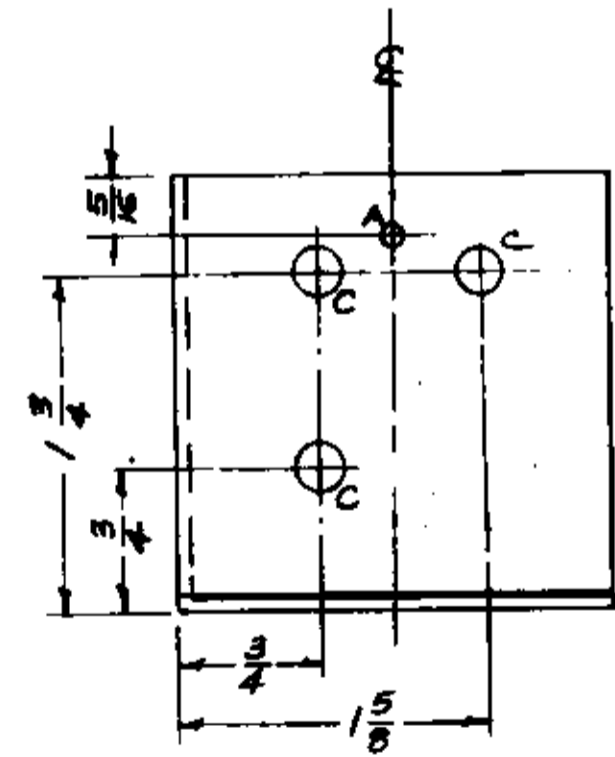
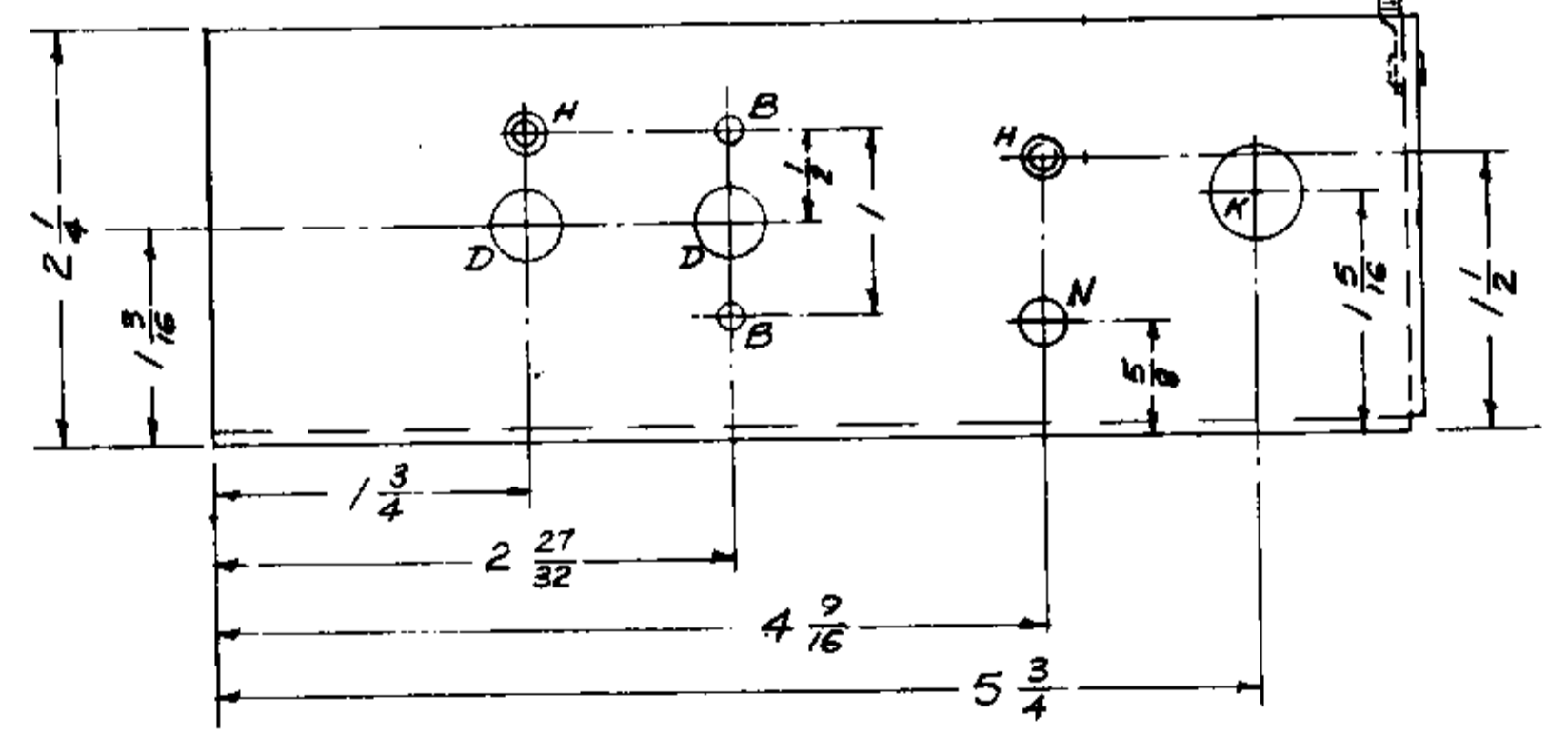
- A — $\frac{1}{8}$ (.125) D. — 4 Req.
- B — $\frac{5}{32}$ (.156) D. — 2 Req.
- C — $\frac{1}{4}$ (.250) D. — 5 Req.
- D — $\frac{3}{8}$ (.375) D. — 3 Req.
- E — $\frac{5}{32} \times \frac{5}{16}$ SLOTS — 4 Req.
- F — Drill & Tap for 4-40 Screw — 8 Req.
- G — Drill & Tap for 8-32 Screw — 4 Req.



- K — $\frac{1}{2}$ (.500) D. — 1 Req.
- L — Drill & Tap for 2-56 Screw — 1 Req.
- M — .156 D. - Deburr Edge as shown.
- N — $\frac{17}{64}$ (.265) D. — 2 Req.
- P — $\frac{5}{16}$ Die. — 1 Req'd.



Mount Spade Lug (SC-107-1) and Eyelet (EY-100-1) in "A" Hole as shown. 1 Req.



MS-1089 H

REV	DESCRIPTION	DATE	BY	CHECKED	APP.
H 1	ONE "P" Hole Added	5/30/50	MM	MM	MM
G 1	5404 - IRIDIUM WAS S131 - CHANGED TO "H" HOLE WAS "C" (3.00)	1/29	JOOI	MM	EMM
F 2	"H" HOLE WAS .156 D. NEW IS .188 D. SPADE LUG & EYELET ADDED	12/2/50	6	H	MM
E 1	ONE "A" HOLE ADDED	3/10/50	5	H	MM
E 2	"D" Hole Added				
D 1	"C" Hole Relocated	3/6/50	4	H	MM
C 2	"C" Hole Del.				
C 1	"C" Hole Relocated	1/16/51	3	H	MM
B 2	"B" Hole Relocated				
B 1	"A" Hole was "B" Hole	9/17/50	2	H	MM
A 1	TWO "B" HOLES WERE "H" HOLES	9/11/51	1	H	MM

SCALE: FULL 14-934

TOLERANCES: DEC. DIM. ± .004; FRAC. DIM. ± 1/64; ANGULAR DIM. ±

DRILL, PUNCH, COMMERCIAL STOCK SIZES AND MANUFACTURERS TOLERANCES ARE NOT INCLUDED.

REQ. PER UNIT	MODEL	PROJECT NO.	ASBY. NO.	DATE
1	SBE-3	AX-204	11-30-59	
1	SBE-2		5-14-58	
1	SBE-1		6-26-57	

REF. LD-362

REQ.	ITEM	PART NO.	DESCRIPTION	STOCK
		.064 tk.	THE TECHNICAL MATERIEL CORP. MAMARONECK NEW YORK	
		ALUMINUM	CHASSIS, R.F. OUTPUT	
		5052-H32	SBE	
		156-26-57		
		SA09-YE-IRIDIUM		

MS-1089 H