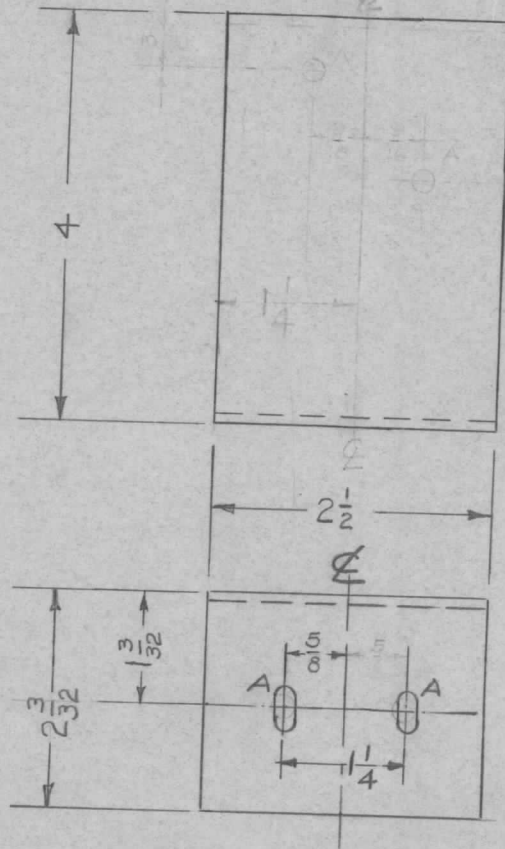


REQ. PER UNIT	USED ON			MS-1032	A
	MODEL	ASS'Y. NO.	DATE		
8	TER-5000	A-1422(3)	3-26-57		



"A" SLOTS $\frac{13}{64} \times \frac{13}{32}$ 2 Req.

UNLESS OTHERWISE SPECIFIED DIMENSIONS ARE IN INCHES AND INCLUDE CHEMICALLY APPLIED OR PLATED FINISHES	
DECIMALS	FRACTIONS
.X ± .05	± 1/64
.XX ± .01	ANGLES
.XXX ± .005	± 0° 30'
TOLERANCES	

CUT HERE
GUARANTEED
2-66

REQ.	ITEM	PART NO.	DESCRIPTION				SYMBOL
		.081	THE TECHNICAL MATERIEL CORP. MAMARONECK, NEW YORK				
		STOCK SIZE	BRACKET, TOP SUPPORT				
A	1	ALUMINIUM	(TER-5000)				
		MATERIAL					
		5052-H32	SC 3/24/57	16 3/24/57	AM		
		TYPE & TEMPER	HEAT TREAT. SPEC.	DRAWN	CHECKED	FINAL APPROVAL	
		5404 YELLOW	IRIDITE				
		FINISH & SPEC. NO.	ELEC. DES. APP.	MECH. DES. APP.	MS-1032		A
ISSUE ITEM		CHANGED FROM	DATE	CH. NO.	DRAFTS	CHECKER	ENG. APP.
A 1		FINISH WAS S107 LACQUER	6/9/59			PI HQ	ahr
TOLERANCES			SCALE:				
DEC. DIM. ±			MAXIMUM ALLOWABLE TOLERANCES HAVE BEEN DETERMINED AND ANY DEVIATIONS WILL BE CAUSE FOR REJECTION.				
FRAC. DIM. ±			REMOVE ALL BURRS AND SHARP EDGES				
ANGULAR DIM. ±							