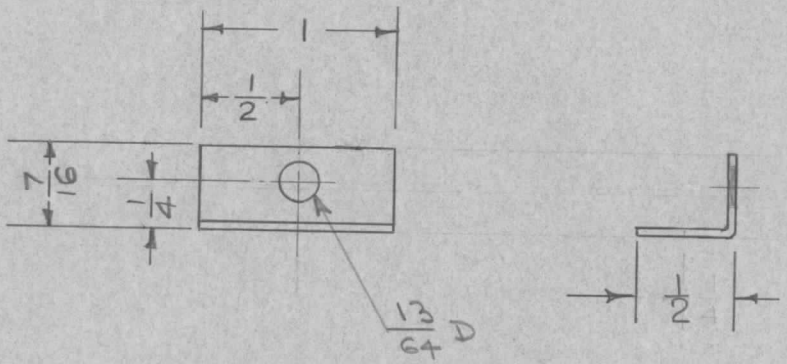


| REQ. PER UNIT | USED ON | | |
|---------------|----------|------------|---------|
| | MODEL | ASS'Y. NO. | DATE |
| 2 | TER-5000 | A-1404 | 3-22-57 |
| 2 | TER-5000 | A-1405 | 3-22-57 |

MS-1029 A



| REQ. ITEM | PART NO. | DESCRIPTION | SYMBOL |
|-------------------|--------------------|---|--------------------|
| | 1/16 THK. X 1" wd. | THE TECHNICAL MATERIEL CORP. | |
| | STOCK SIZE | MAMARONECK, NEW YORK | |
| A 1 | DIM 1/2 WAS 1/4 | GUARD, STRAP | |
| | BRASS | (TER-5000) | |
| ISSUE | ITEM | CHANGED FROM | DATE |
| | | | 7-9-63 |
| | | | 9472 |
| | | | <i>n.p.</i> |
| | | | <i>[Signature]</i> |
| TOLERANCES | | SCALE: // | |
| DEC. DIM. ± | | MAXIMUM ALLOWABLE TOLERANCES HAVE BEEN DETERMINED AND ANY DEVIATIONS WILL BE CAUSE FOR REJECTION. | |
| FRAC. DIM. ± 1/64 | | REMOVE ALL BURRS AND SHARP EDGES | |
| ANGULAR DIM. ± | | | |
| | HALF HARD | 16 3-22-57 | <i>[Signature]</i> |
| | TYPE & TEMPER | DRAWN | CHECKED |
| | HEAT TREAT. SPEC. | | FINAL APPROVAL |
| | FINISH & SPEC. NO. | ELEC. DES. APP. | MECH. DES. APP. |
| | | | MS-1029 A |