

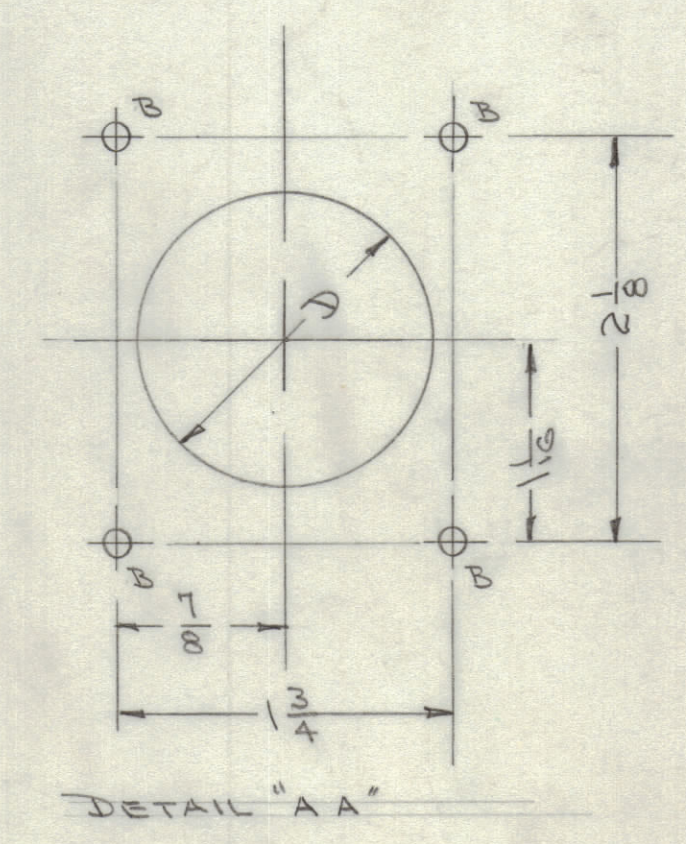
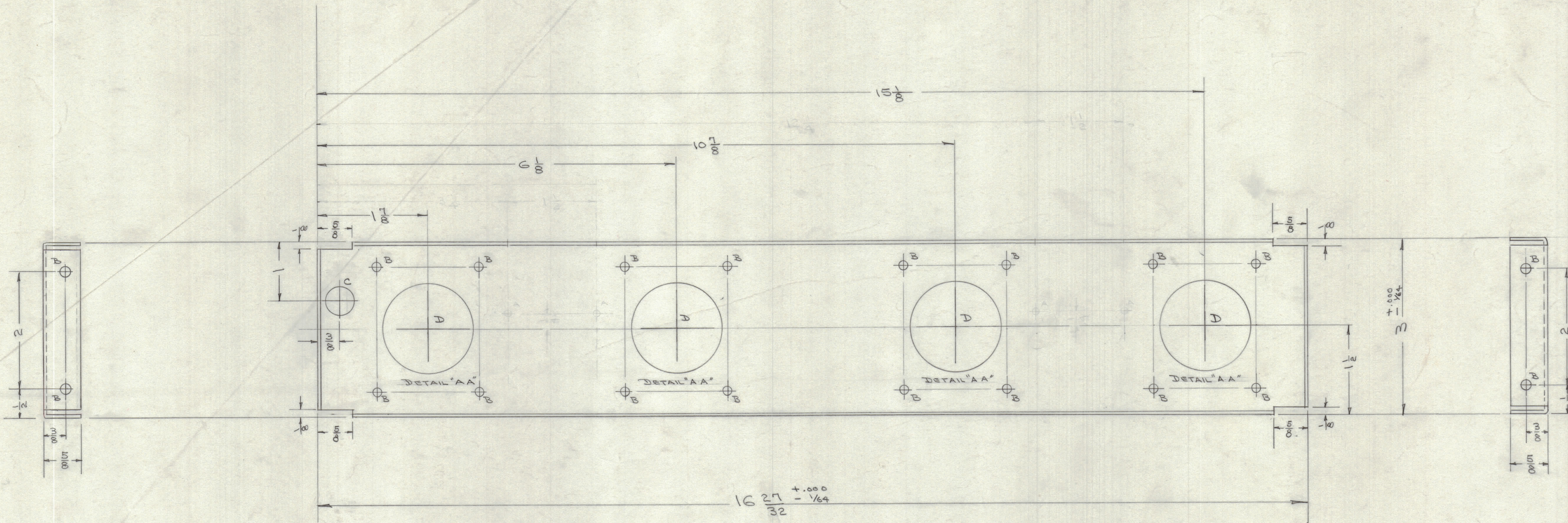
IF IT IS FOUND DESIRABLE TO CHANGE ANY TOLERANCE OR OTHER DETAIL SPECIFIED ON THIS DRAWING NOTIFY THE PURCHASER PROMPTLY.
 MAXIMUM ALLOWABLE TOLERANCES HAVE BEEN DETERMINED AND DEVIATIONS WILL BE CAUSE FOR REJECTION. REMOVE ALL BURRS AND SHARP EDGES

NOTICE TO PERSONS RECEIVING THIS DRAWING

THE TECHNICAL MATERIEL CORPORATION claims proprietary right in the material disclosed herein. This drawing is issued in confidence for engineering information only and may not be reproduced or used to manufacture anything shown herein without permission from THE TECHNICAL MATERIEL CORPORATION to the user. This drawing is loaned for mutual assistance and is subject to recall at any time.

Property of:
 THE TECHNICAL MATERIEL CORPORATION
 MAMARONECK, NEW YORK

MS-1006
 D



LEGEND
 A - (Deleted - Rev. B)
 B = 13/64 (203) D 20 HOLES REQ.
 C = 1/2 (.500) D 1 HOLE
 D = 1/2 (1.500) D 4 HOLES

D	S-404 YEL. IRIDITE WAS	12/6/57	1001	AG	16	EMV
C	S-101 CAUSTIC DIP	9/7/57	3	PC	16	EMV
B	1/8" CHANGED TO 3/16"	9/25/57	2	16	AG	EMV
A	"A" Holes Deleted	9/25/57	1	16	AG	EMV
A	"A" Hole Location Clarified	9/25/57	1	16	AG	EMV

ISSUE	ITEM	CHANGED FROM	DATE	CN. NO.	DRAFTS	CHECKER	ENG. APP.
		TOLERANCES	SCALE:				
ALL OTHERS	DEC. DIM. ±	DRILL PUNCH, COMMERCIAL STOCK SIZES AND MANUFACTURERS TOLERANCES ARE NOT INCLUDED.					
	FRAC. DIM. ±						
	ANGULAR DIM. ±						

1		TTF		638		1/10/57	
REQ PER UNIT	MODEL	PROJECT NO.	ASS'Y. NO.	DATE	HEAT TREAT. SPEC.		
					S-404 YEL IRIDITE		
					FINISH & SPEC. NO.		
USED ON				CHECKED		FINAL APPROVAL	
				MS-1006		D	