

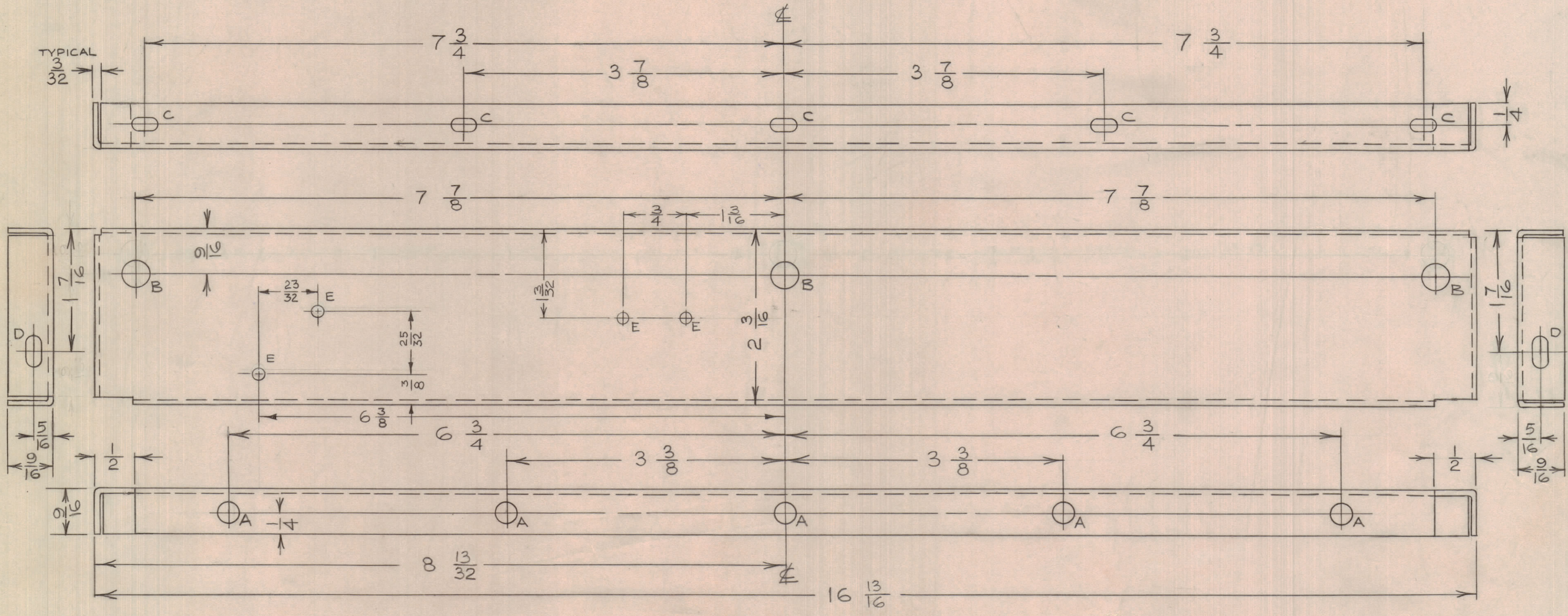
IF IT IS FOUND DESIRABLE TO CHANGE ANY TOLERANCE OR OTHER DETAIL SPECIFIED ON THIS DRAWING NOTIFY THE PURCHASER PROMPTLY.		DIMENSIONS IN INCHES UNLESS OTHERWISE SPECIFIED					
MAXIMUM ALLOWABLE TOLERANCES HAVE BEEN DETERMINED AND DEVIATIONS WILL BE CAUSE FOR REJECTION. REMOVE ALL BURRS AND SHARP EDGES.							
ISSUE	ITEM	CHANGED FROM	DATE	CN. NO.	DRAFTS	CHECKER	ENG. APP.
B		REDRAWN AT ISSUE B	MAY 29/61	1	JPC	J.L.	M. Ke
C		1/2 WAS 1/4	AUG 7/61	2	JPC	J.L.	M. Ke
D	1	ADDED (2)"E" HOLES	3.29.63	8678	JPC	J.L.	M. Ke
E	1	2"E" HOLES ADDED	5.22.64	11432	W.B.	J.C.B.	M. Ke

REQ.	ITEM	PART NO.	DESCRIPTION	SYMBOL
------	------	----------	-------------	--------

NOTICE TO PERSONS RECEIVING THIS DRAWING

THE TECHNICAL MATERIEL CORPORATION claims proprietary right in the material disclosed hereon. This drawing is issued in confidence for engineering information only and may not be reproduced or used to manufacture anything shown hereon without permission from THE TECHNICAL MATERIEL CORPORATION to the user. This drawing is loaned for mutual assistance and is subject to recall at any time.

Property of:
THE TECHNICAL MATERIEL CORPORATION
 MAMARONECK, NEW YORK



MS10091 E

HOLE A - 1/4 DIA.
 HOLE B - 5/16 DIA.
 HOLE C - 9/64 X 9/32 SLOT.
 HOLE D - 11/64 X 11/32 SLOT.
 HOLE E - 9/64 DIA.

TOLERANCES		SCALE: N.T.S.
ALL OTHERS	DEC. DIM. ± 1/64	DRILL, PUNCH, COMMERCIAL STOCK SIZES AND MANUFACTURERS TOLERANCES ARE NOT INCLUDED.

AMCG-2	PROJECT NO.	ASS'Y. NO.	MAY 29/61
MODEL	PROJECT NO.	ASS'Y. NO.	DATE

.064 TK.		TMC (Canada) LIMITED	
STOCK SIZE		OTTAWA ONTARIO	
AL.		BARRIER	
MATERIAL		AMCG-2	
WEIGHT PER FC.		JPC	
TYPE & TEMPER		M. Ke	
HEAT TREAT. SPEC.		ELEC. DES. APP. MECH. DES. APP.	
S101 & S404		J.L.	
FINISH & SPEC. NO.		CHECKED FINAL APPROVAL	
		MS10091 E	