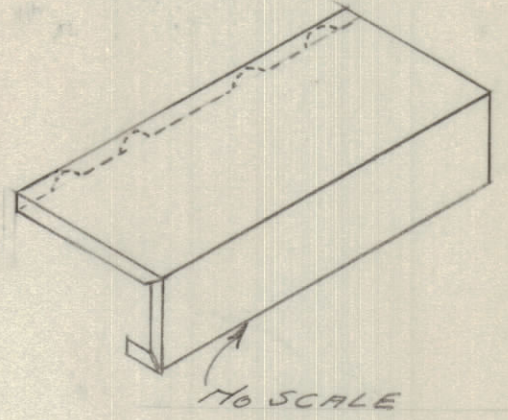
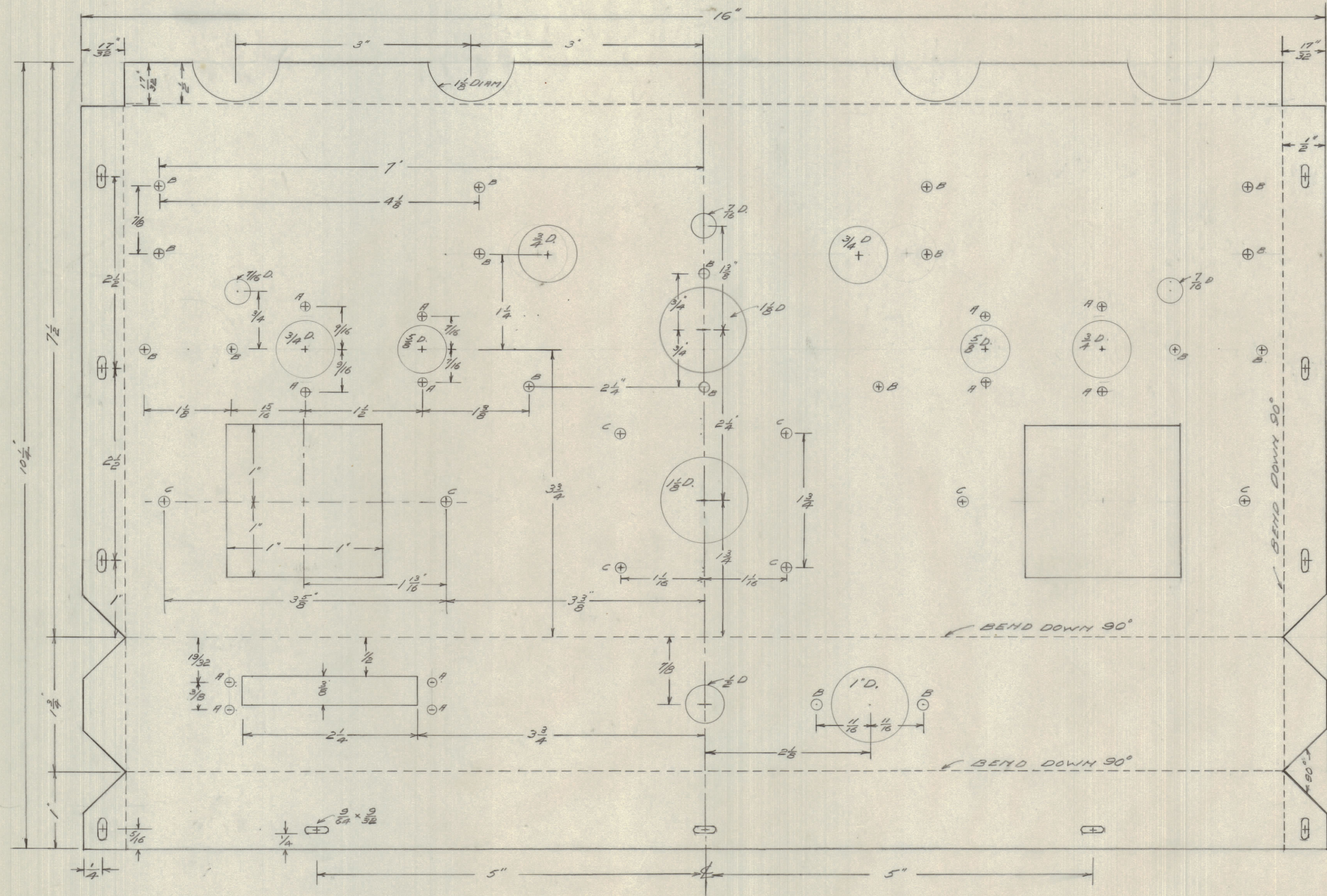


IF IT IS FOUND DESIRABLE TO CHANGE ANY TOLERANCE OR OTHER DETAIL SPECIFIED ON THIS DRAWING NOTIFY THE PURCHASER PROMPTLY.

MAXIMUM ALLOWABLE TOLERANCES HAVE BEEN DETERMINED AND DEVIATIONS WILL BE CAUSE FOR REJECTION. REMOVE ALL BURRS AND SHARP EDGES



MS 10080

- (A) 9/64 HOLES
- (B) 11/64 HOLES
- (C) 13/64 HOLES

ISSUE	ITEM	CHANGED FROM	DATE	CN. NO.	DRAFTS	CHECKER	ENG. APP.
TOLERANCES							
SCALE: FULL SIZE.							
DRILL, PUNCH, COMMERCIAL STOCK SIZES AND MANUFACTURERS TOLERANCES ARE NOT INCLUDED.							

MODEL	PROJECT NO.	ASS'Y. NO.	DATE
	5366		24/9/57
USED ON			

REQ. ITEM	PART NO.	DESCRIPTION	SYMBOL
		<b>TMC (Canada) LIMITED</b>	
		OTTAWA ONTARIO	
		DUAL AUDIO OSCILLATOR	
		CHASSIS	
		MATERIAL	WEIGHT PER PC.
		06A AL 575 1/2 H.	
		TYPE & TEMPER	
		DRAWN	ELEC. DES. APP.
		CHECKED	MECH. DES. APP.
		HEAT TREAT. SPEC.	FINAL APPROVAL
		E & L	
		FINISH & SPEC. NO.	MS 10080