

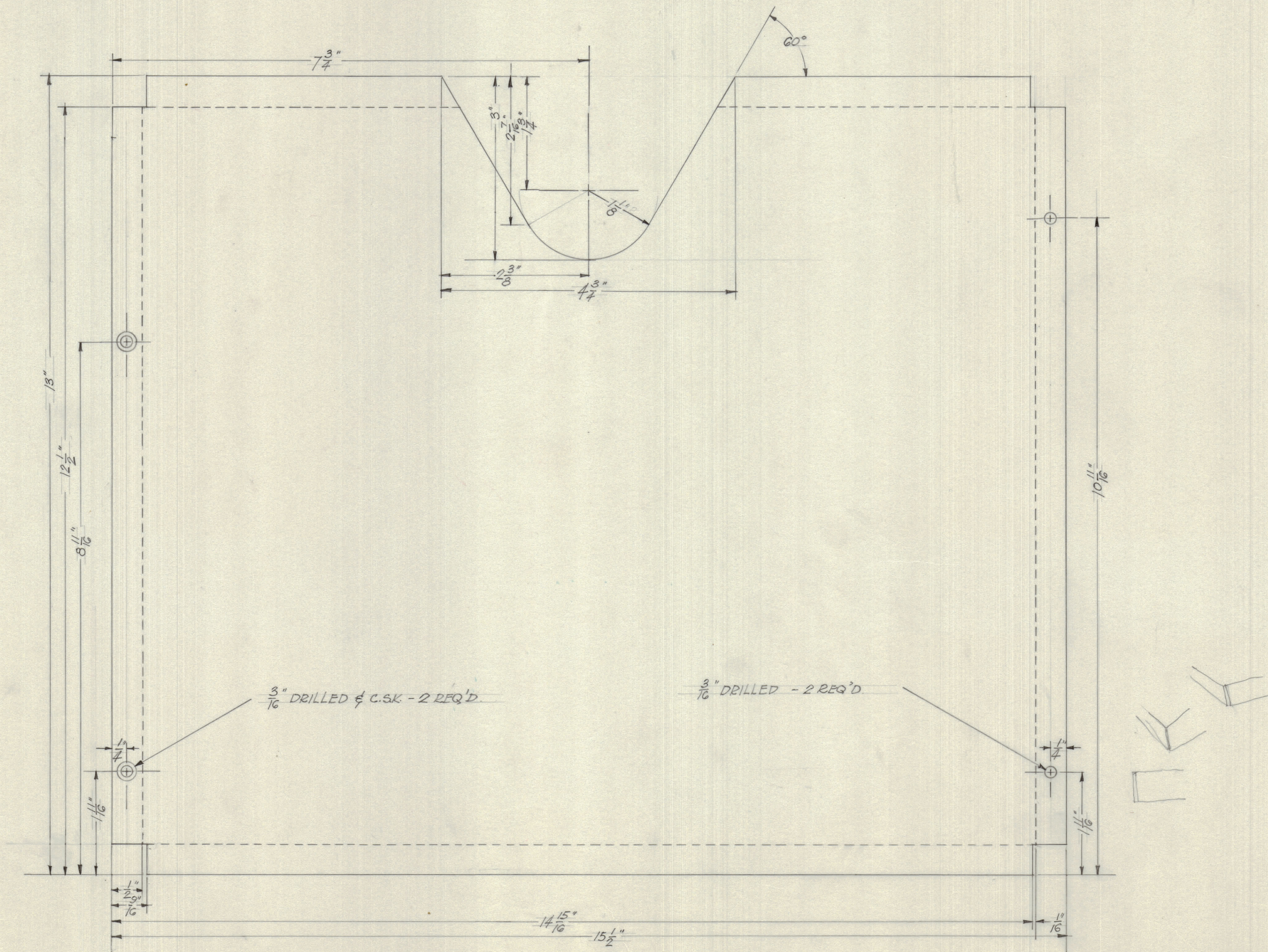
IF IT IS FOUND DESIRABLE TO CHANGE ANY TOLERANCE OR OTHER DETAIL SPECIFIED ON THIS DRAWING NOTIFY THE PURCHASER PROMPTLY.

MAXIMUM ALLOWABLE TOLERANCES HAVE BEEN DETERMINED AND DEVIATIONS WILL BE CAUSE FOR REJECTION. REMOVE ALL BURRS AND SHARP EDGES.

NOTICE TO PERSONS RECEIVING THIS DRAWING

THE TECHNICAL MATERIEL CORPORATION claims proprietary right in the material disclosed hereon. This drawing is issued in confidence for engineering information only and may not be reproduced or used to manufacture anything shown hereon without permission from THE TECHNICAL MATERIEL CORPORATION to the user. This drawing is loaned for mutual assistance and is subject to recall at any time.

Property of:
THE TECHNICAL MATERIEL CORPORATION
MAMARONECK, NEW YORK



MS-10070

PART OF CN/SIH 601

ISSUE	ITEM	CHANGED FROM	DATE	CN. NO.	DRAFTS	CHECKER	ENG. APP.
ALL OTHERS		DEC. DIM. ± FRAC. DIM. ± ANGULAR DIM. ±					

FORM-130

MODEL	10028	PROJECT NO.		ASS'Y. NO.		DATE	16-7-54
USED ON							

REQ. ITEM	PART NO.	DESCRIPTION	SYMBOL
0.064 SHEET		TMC (Canada) LIMITED	
STOCK SIZE		OTTAWA	ONTARIO
MATERIAL	WEIGHT PER PC.	PARTITION FOR RECORD	
ALCAN 575T		STOWAGE DRAWER (LARGE)	
TYPE & TEMPER		JRH	
		DRAWN	ELEC. DES. APP. MECH. DES. APP.
HEAT TREAT. SPEC.		CHECKED	FINAL APPROVAL
TMC 5-101 & 5-107			MS-10070
FINISH & SPEC. NO.			