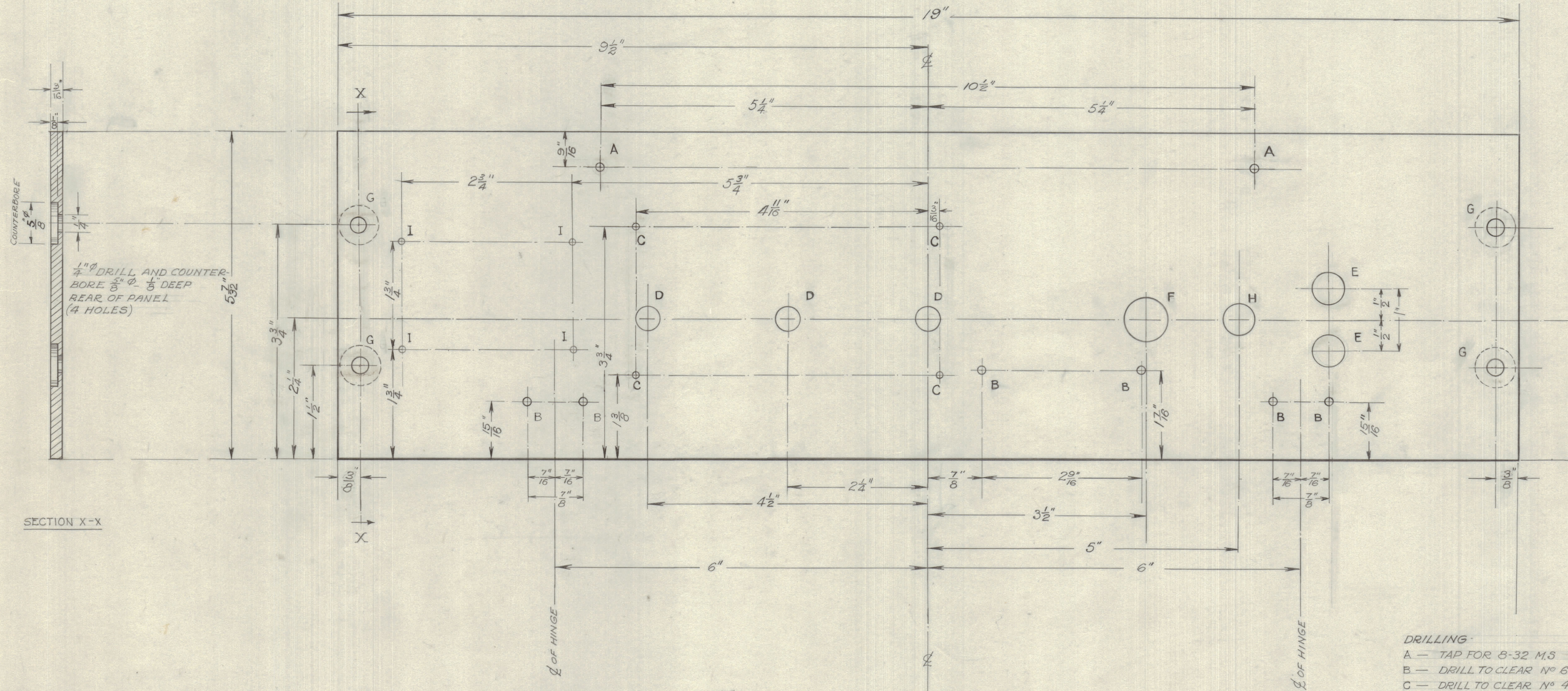


IF IT IS FOUND DESIRABLE TO CHANGE ANY TOLERANCE OR OTHER DETAIL SPECIFIED ON THIS DRAWING NOTIFY THE PURCHASER PROMPTLY.  
 MAXIMUM ALLOWABLE TOLERANCES HAVE BEEN DETERMINED AND DEVIATIONS WILL BE CAUSE FOR REJECTION. REMOVE ALL BURRS AND SHARP EDGES

NOTICE TO PERSONS RECEIVING THIS DRAWING

THE TECHNICAL MATERIEL CORPORATION claims proprietary right in the material disclosed herein. This drawing is issued in confidence for engineering information only and may not be reproduced or used to manufacture anything shown herein without permission from THE TECHNICAL MATERIEL CORPORATION to the user. This drawing is loaned for mutual assistance and is subject to recall at any time.

Property of:  
 THE TECHNICAL MATERIEL CORPORATION  
 MAMARONECK, NEW YORK



- DRILLING:
- A - TAP FOR 8-32 M.S
  - B - DRILL TO CLEAR N° 6-32 M.S.
  - C - DRILL TO CLEAR N° 4-40
  - D - 3/8" DIA HOLES
  - E - 1/8" DIA HOLES
  - F - REAM HOLE TO 1/16" DIA
  - G - DRILL & COUNTERBORE AS SHOWN
  - H - 3/16" DIA HOLE
  - I - 29/64" DIA HOLES

MS-10063

ISSUE	ITEM	CHANGED FROM	DATE	CN. NO.	DRAFTS	CHECKER	ENG. APP.
TOLERANCES							
ALL DEC. DIM. ± 1/32				SCALE: FULL SIZE			
OTHERS FRAC. DIM. ± 1/64				DRILL PUNCH COMMERCIAL STOCK SIZES AND MANUFACTURERS TOLERANCES ARE NOT INCLUDED.			
ANGULAR DIM. ± 1/2							

PAA-1	10028	JULY 5TH 54
MODEL	PROJECT NO.	DATE
USED ON		

REQ. ITEM	PART NO.	DESCRIPTION	SYMBOL
3/16" SHEET		TMC (Canada) LIMITED	
ALUMINUM		OTTAWA ONTARIO	
MATERIAL	WEIGHT PER PC	FRONT PANEL-AUDIO AMPLIFIER	
ALCAN 248-T		CN/SIH 601/2	
ALCOA 245T-3		E.W.B.G	
TYPE & TEMPER		DRAWN	ELEC. DES. APP. MECH. DES. APP.
		CHECKED	FINAL APPROVAL
			MS-10063