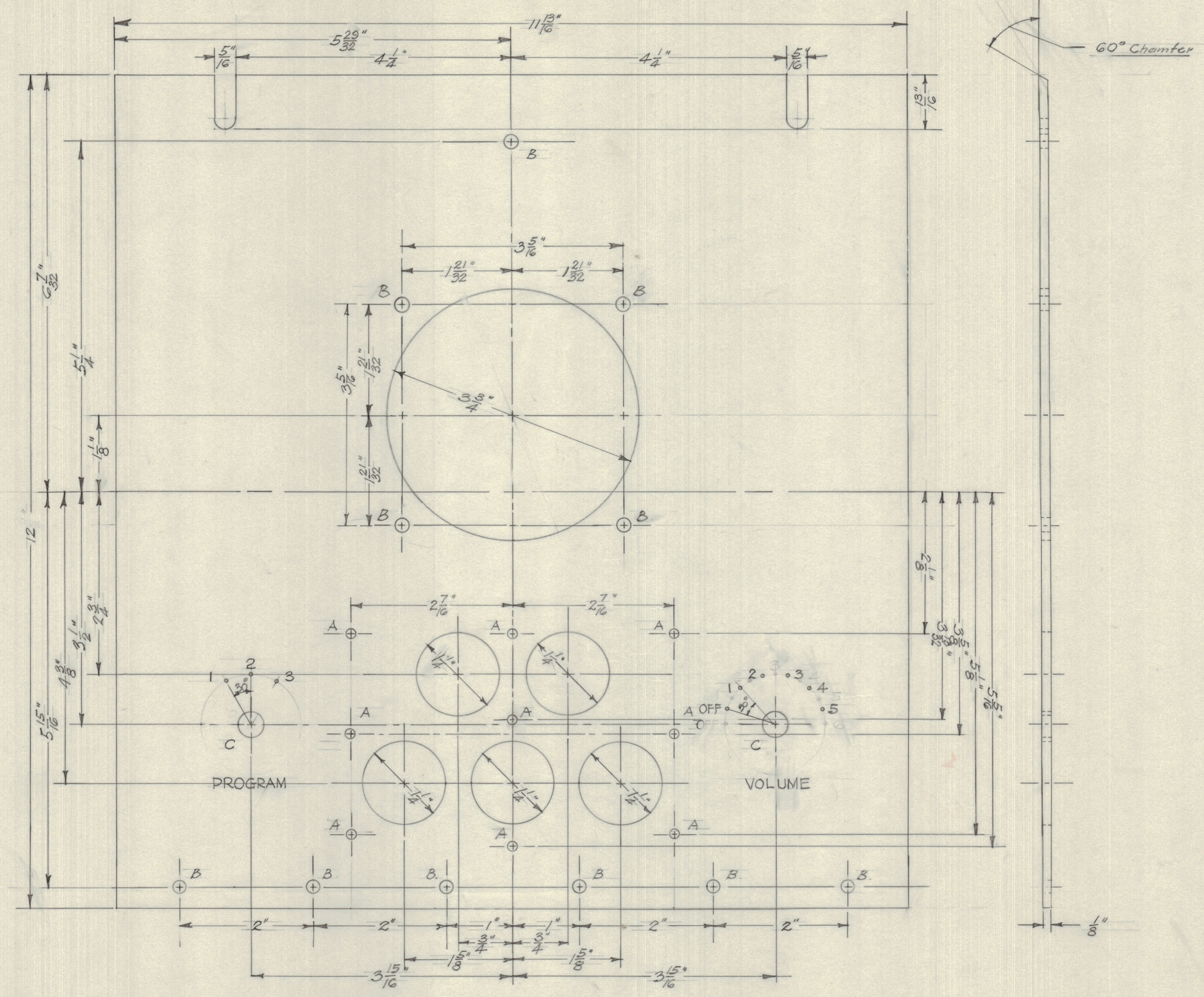


IF IT IS FOUND DESIRABLE TO CHANGE ANY TOLERANCE OR OTHER DETAIL SPECIFIED ON THIS DRAWING NOTIFY THE PURCHASER PROMPTLY.
 MAXIMUM ALLOWABLE TOLERANCES HAVE BEEN DETERMINED AND DEVIATIONS WILL BE CAUSE FOR REJECTION. REMOVE ALL BURRS AND SHARP EDGES

NOTICE TO PERSONS RECEIVING THIS DRAWING
 THE TECHNICAL MATERIEL CORPORATION claims proprietary right in the material disclosed hereon. This drawing is issued in confidence for engineering information only and may not be reproduced or used to manufacture anything shown hereon without permission from THE TECHNICAL MATERIEL CORPORATION to the user. This drawing is loaned for mutual assistance and is subject to recall at any time.
 Property of:
 THE TECHNICAL MATERIEL CORPORATION
 MAMARONECK, NEW YORK



A - 1/8" HOLE DRILLED.
 B - 1/16" HOLE
 C - 3/8" HOLE

ISSUE	ITEM	CHANGED FROM	DATE	CN. NO.	DRAFTS	CHECKER	ENG. APP.
TOLERANCES		SCALE:					
ALL	DEC. DIM. ±	DRILL PUNCH, COMMERCIAL STOCK					
OTHERS	FRAC. DIM. ±	SIZES AND MANUFACTURERS					
	ANGULAR DIM. ±	TOLERANCES ARE NOT INCLUDED.					

MODEL	1002B	PROJECT NO.	12-G-54
ABBY. NO.		DATE	
USED ON			

REQ. ITEM	PART NO.	DESCRIPTION	SYMBOL
1/8" SHEET		TMC (Canada) LIMITED	
STOCK SIZE		OTTAWA ONTARIO	
ALUMINUM		PANEL FOR LOUDSPEAKER	
MATERIAL	WEIGHT PER PC.	CABINET CN/SH/CO/2	
ALCAN 575-2H			
ALCAD 525			
TYPE & TEMPER		JRH	
HEAT TREAT SPEC.		DRAWN	ELEC. DES. APP.
TMC SPEC. REG. SPEC. 1-pp. 12		CHECKED	MECH. DES. APP.
FINISH & SPEC. NO.			FINAL APPROVAL
			M/S-10051

MS-10051