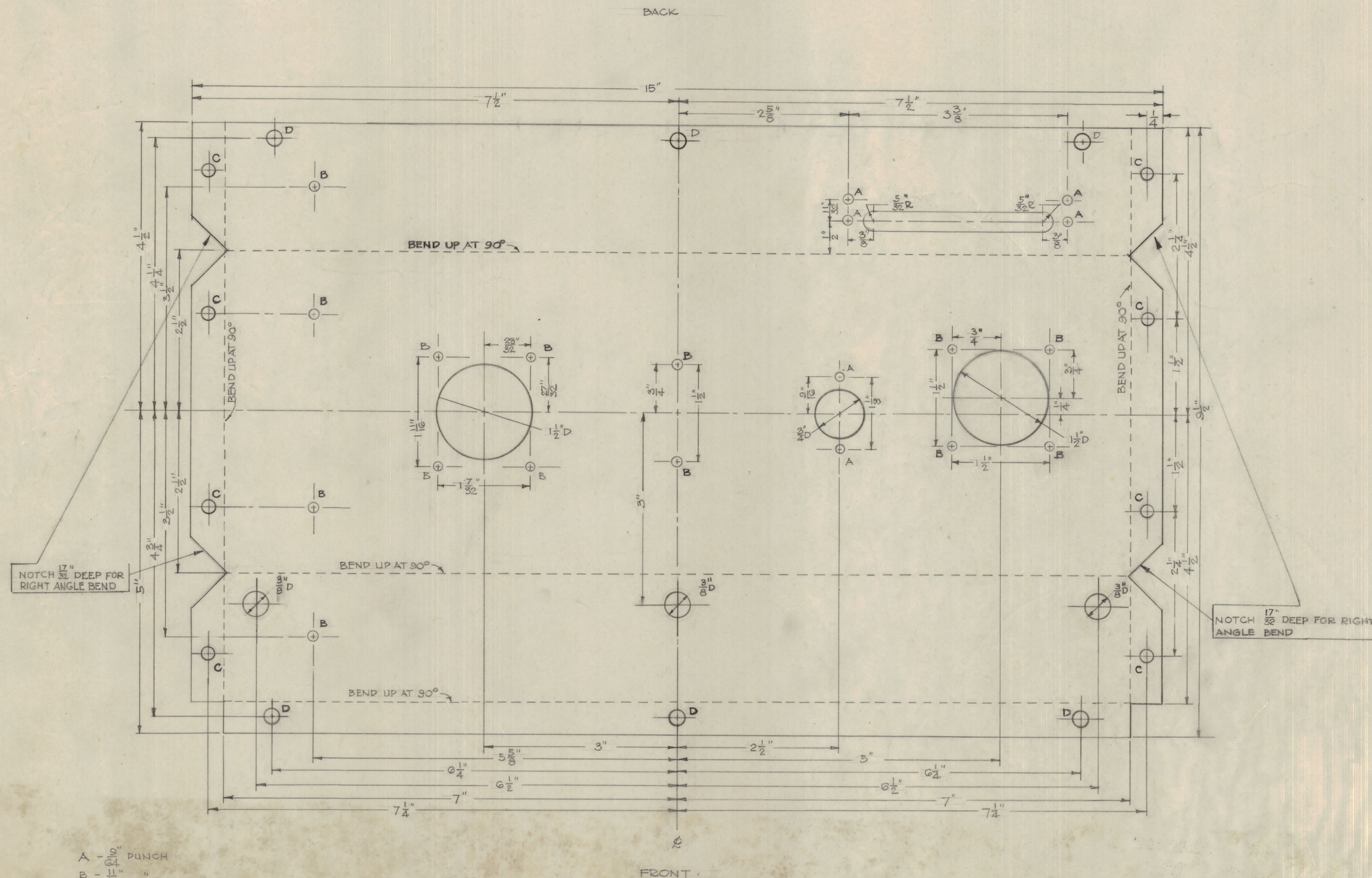
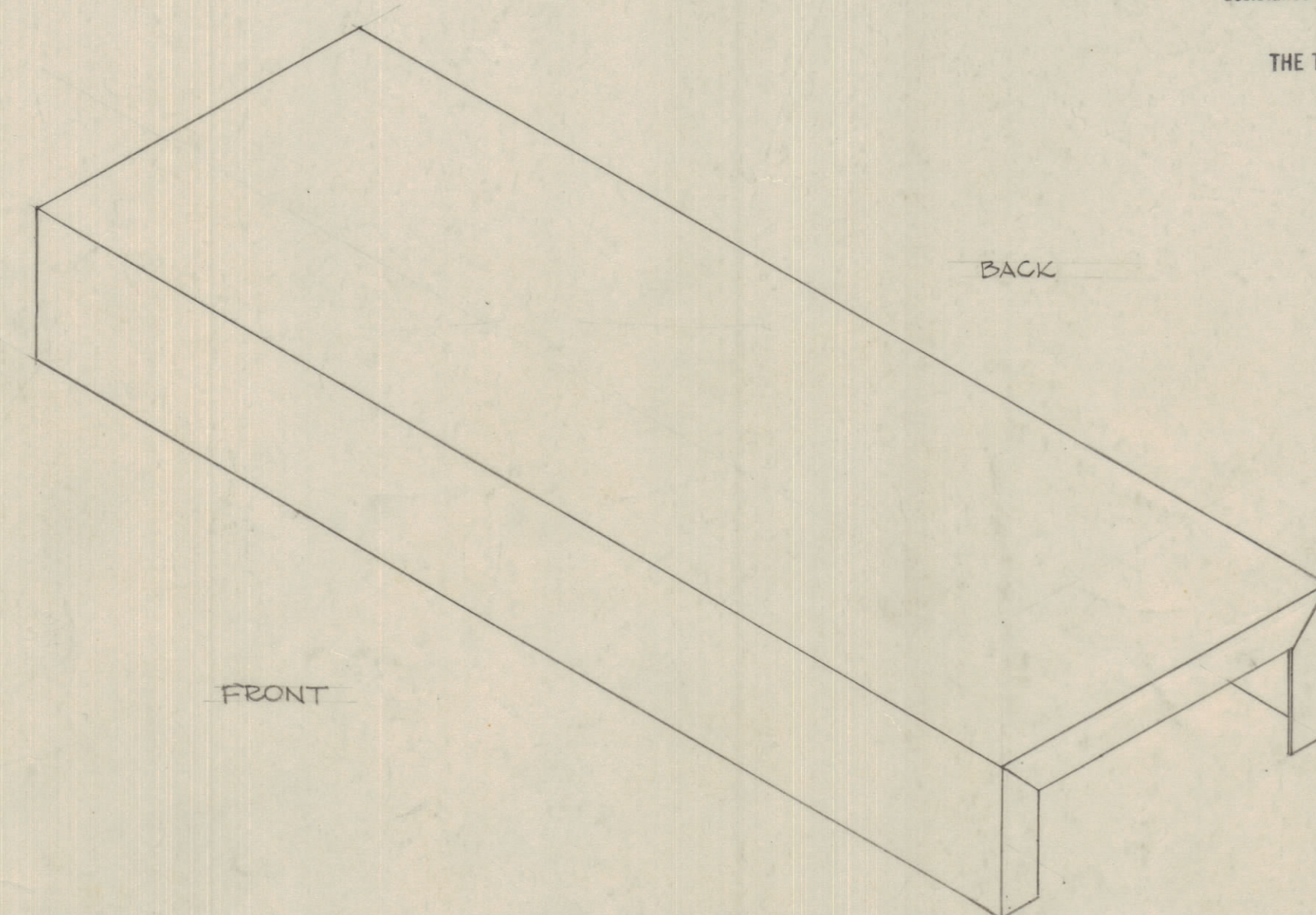


NOTICE TO PERSONS RECEIVING THIS DRAWING

THE TECHNICAL MATERIEL CORPORATION claims proprietary right in the material disclosed herein. This drawing is issued in confidence for engineering information only and may not be reproduced or used to manufacture anything shown hereon without permission from THE TECHNICAL MATERIEL CORPORATION to the user. This drawing is loaned for mutual assistance and is subject to recall at any time.

Property of:
 THE TECHNICAL MATERIEL CORPORATION
 MAMARONECK, NEW YORK



- A - $\frac{9}{16}$ " PUNCH
 - B - $\frac{11}{16}$ " "
 - C - $\frac{13}{16}$ " "
 - D - $\frac{1}{4}$ " "
- BLANK SIZE $9\frac{1}{2} \times 15$ "

SCALE FULL SIZE

LSP-1	10015	A-10011	2-10-53
MODEL	PROJECT NO.	ASSY. NO.	DATE

15" x 9 1/2" x 0.064"		TMC (Canada) LTD.	
STOCK SIZE		OTTAWA ONTARIO	
ALUMINUM		TEMPLATE OF CHASSIS UNIT	
MATERIAL WT PER LG		MONITOR SPEAKER	
ALCAN 575-H HARD		J.R.H.	
ALCOA 525-H24		DRWH	ELEC. DES. APP. MECH. DES. APP.
TYPE 3-TEMPER.			
HEAT TREAT SPEC		CHECKED	FINAL APPROVAL
FINISH & SPEC. UP.			MS-10018