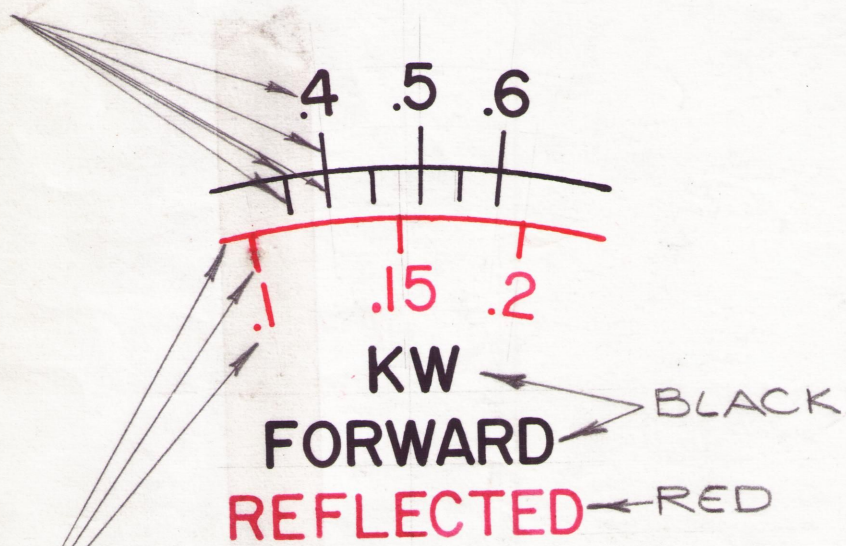
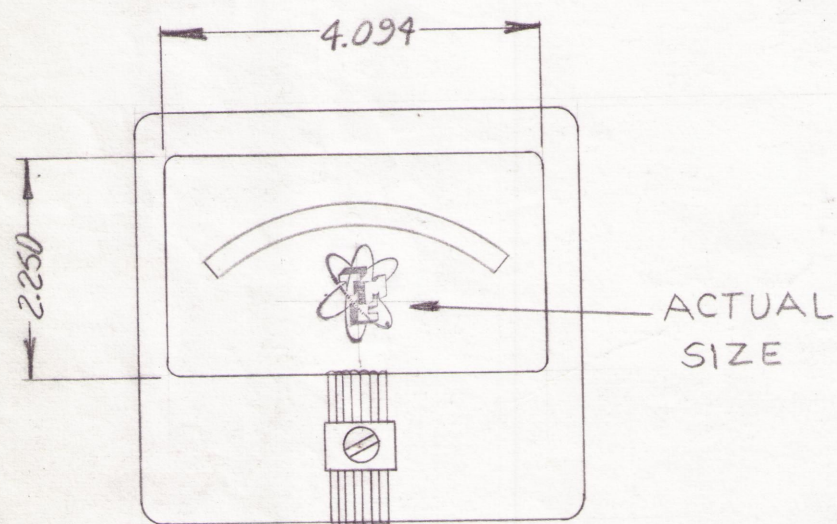


ALL UPPER NUMERALS, MAJOR & MINOR CALIBRATION POINTS TO BE IN BLACK



ALL LOWER NUMERALS & MAJOR CALIBRATION POINTS TO BE IN RED

DETAIL - METER



INSERT TMC INSIGNIA (NP 117) IN PLACE OF WORD SIMPSON COLOR, TO BE BLACK, INSIGNIA CENTERED.

SPECIFICATIONS :

- CASE: STANDARD COMMERCIAL RECTANGULAR 4-1/2" PLASTIC.
- FINISH: GLOSSY BLACK
- MOVEMENT: 0-100 MICROAMPS ± 2%
- APPROX. RESISTANCE:
- HARDWARE: (2) FLAT WASHERS (2) HEX NUTS 1/4-28 FOR TERMINALS, (4) LOCKWASHERS, (4) G-32 HEX NUTS FOR MOUNTING, SUPPLIED BY MFR.

DESIGNED FOR USE WITH THRU LINE DIRECTIONAL WATTMETER TMC #DC106

APPROX RESISTANCE: 1825 Ω  
POINTER: SPADE TYPE

0-1500/500 WATTS DIAL DATA FOR SIMPSON 29 METER

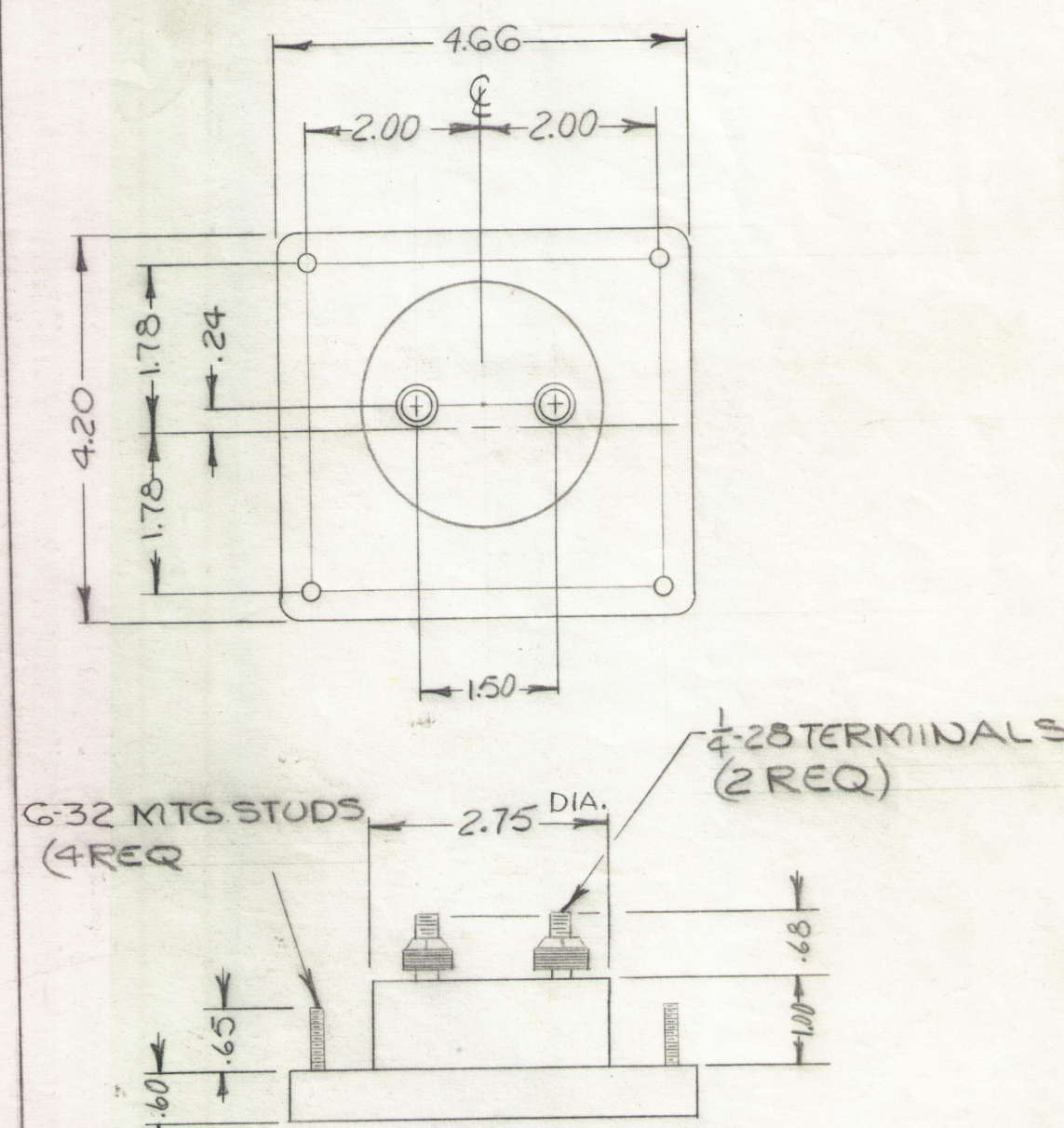
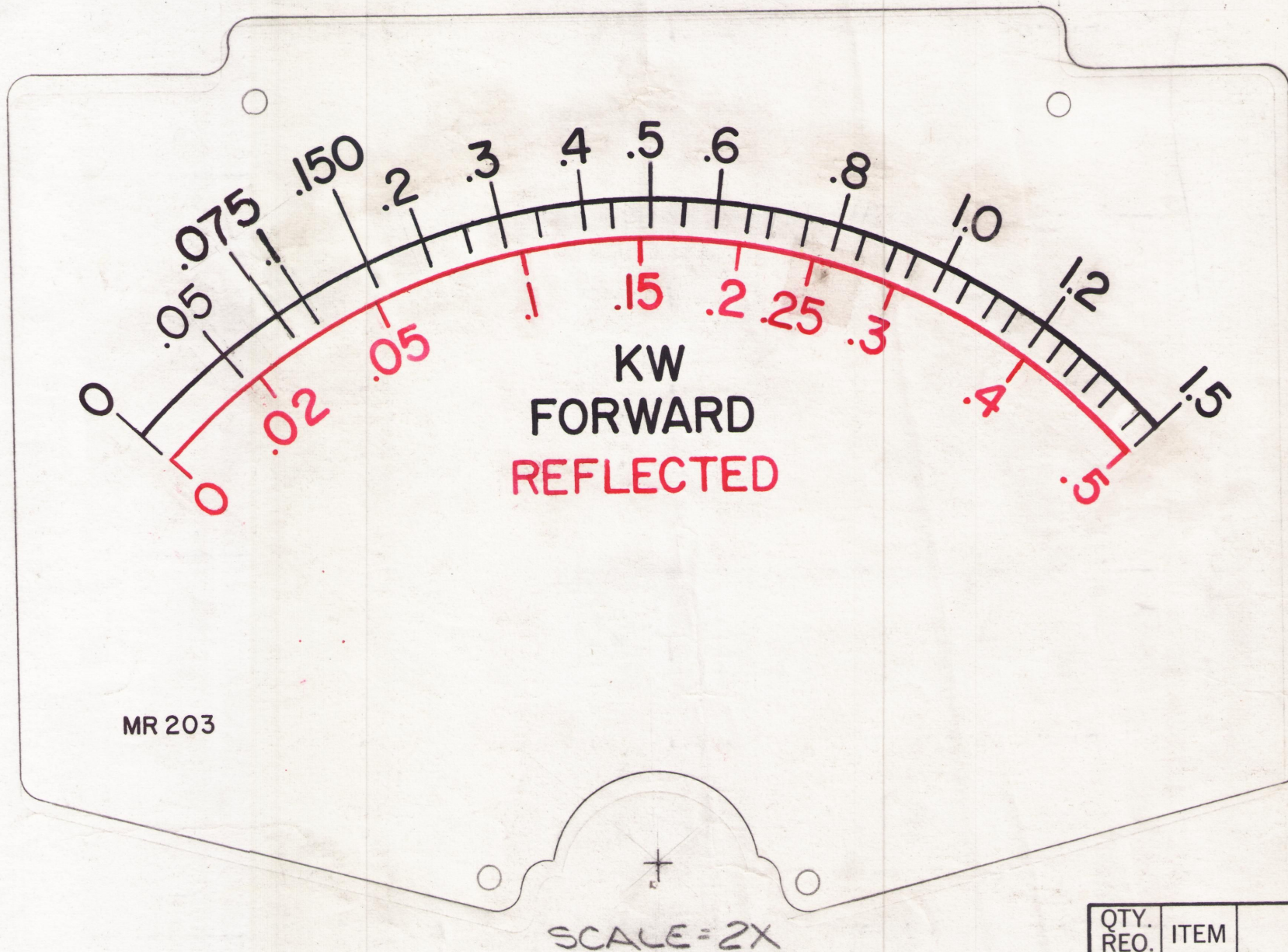
BIRD MODEL 423 THRU LINE WATTMETER

(METER IS 100 MICROAMPERES ± 2% WITH 1825 OHMS RESISTANCE)

1500 WATTS	MICROAMPS	1500 WATTS	MICROAMPS	500 WATTS	MICROAMPS	500 WATTS	MICROAMPS
0	0	1300	91.7	0	0	260	67.4
50	10.8	1350	93.8	10	6.0	270	68.9
100	18.8	1400	95.9	20	11.2	280	70.4
150	25.0	1450	98.0	30	15.9	290	71.9
200	30.0	1500	100.0	40	20.1	300	73.4
250	34.0			50	24.0	310	74.8
300	37.5			60	27.3	320	76.2
350	40.9			70	30.3	330	77.6
400	44.2			80	33.1	340	79.0
450	47.4			90	35.8	350	80.4
500	50.5			100	38.4	360	81.8
550	53.5			110	40.8	370	83.2
600	56.4			120	43.1	380	84.6
650	59.2			130	45.2	390	86.0
700	61.9			140	47.2	400	87.3
750	64.6			150	49.2	410	88.6
800	67.2			160	51.1	420	89.9
850	69.8			170	52.9	430	91.2
900	72.3			180	54.7	440	92.5
950	74.8			190	56.4	450	93.8
1000	77.3			200	58.1	460	95.1
1050	79.8			210	59.7	470	96.4
1100	82.3			220	61.3	480	97.6
1150	84.8			230	62.9	490	98.8
1200	87.2			240	64.4	500	100.0
1250	89.5			250	65.9		

REVISIONS						
ZONE	LTR	DESCRIPTION	DATE	E.M.N.NO	DRAFT	CHKD APPD
	X	EXP RELEASE	11-28-68			
	Ø	ORIGINAL RELEASE FOR PRODUCTION	5-7-68			

NOTES:  
THIS METER DIAL FACE HAS BEEN DRAWN TO SCALE (2X)  
THE ORIGINAL ARTWORK TO BE SUPPLIED BY TMC FOR PHOTOGRAPHING  
METER MUST BE CALIBRATED TO CALIBRATION CURVE



SWCD-3K		
QTY / UNIT	MODEL USED ON	ASS'Y NO.
APPLICATION		
	CODE	
C		
NOTICE TO PERSONS RECEIVING THIS DRAWING		
THE TECHNICAL MATERIEL CORPORATION claims proprietary right in the material disclosed herein. This drawing is issued in confidence for engineering information only and may not be reproduced or used to manufacture anything shown hereon without permission from THE TECHNICAL MATERIEL CORPORATION to the user. This drawing is loaned for mutual assistance and is subject to recall at any time.		

UNLESS OTHERWISE SPECIFIED DIMENSIONS ARE IN INCHES AND INCLUDE CHEMICALLY APPLIED OR PLATED FINISHES	
TOLERANCES ON	
DECIMALS	FRACTIONS
.X ± .05	± 1/64
.XX ± .01	ANGLES
.XXX ± .005	± 0° -30'

QTY. REQ.	ITEM	PART NO.	DESCRIPTION	SYMBOL
F. BUDETTI LIST OF MATERIAL				
THE TECHNICAL MATERIEL CORP. MAMARONECK, NEW YORK				
METER, KW, FORWARD, REFLECTED				
SIZE	CODE IDENT. NO.	DWG NO.	ISSUE	
C	82679	MR 203	Ø	
SCALE 2:1			SHEET	OF

MR 203