

IF IT IS FOUND DESIRABLE TO CHANGE ANY TOLERANCE OR OTHER DETAIL SPECIFIED ON THIS DRAWING NOTIFY THE PURCHASER PROMPTLY.

MR-104

MAXIMUM ALLOWABLE TOLERANCES HAVE BEEN DETERMINED AND DEVIATIONS WILL BE CAUSE FOR REJECTION. REMOVE ALL BURRS AND SHARP EDGES

USED ON

MODEL

PROJECT NO.

ASS'Y. NO.

DATE

DMK-4

9/4/53

*Ref: Hammond Mfg Co Part 4903-2 (Boule 411M)*

REQ.	ITEM	PART NO.	DESCRIPTION	SYMBOL
			THE TECHNICAL MATERIEL CORP. MAMARONECK, NEW YORK	
			STOCK SIZE	
			METER, INDICATING, microammeter	
			MATERIAL	WEIGHT PER PC.
			TYPE & TEMPER	
			HEAT TREAT. SPEC.	
			FINISH & SPEC. NO.	

ISSUE	ITEM	CHANGED FROM	DATE	CN. NO.	DRAFTS	CHECKER	ENG. APP.
-------	------	--------------	------	---------	--------	---------	-----------

TOLERANCES

SCALE

ALL OTHERS  
DEC. DIM.  $\pm$   
FRAC. DIM.  $\pm$   
ANGULAR DIM.  $\pm$

DRILL, PUNCH, COMMERCIAL STOCK SIZES AND MANUFACTURERS TOLERANCES ARE NOT INCLUDED.

DRAWN

ELEC. DES. APP.

MECH. DES. APP.

CHECKED

FINAL APPROVAL

MR-104

IF IT IS FOUND DESIRABLE TO CHANGE ANY TOLERANCE OR OTHER DETAIL SPECIFIED ON THIS DRAWING NOTIFY THE PURCHASER PROMPTLY.

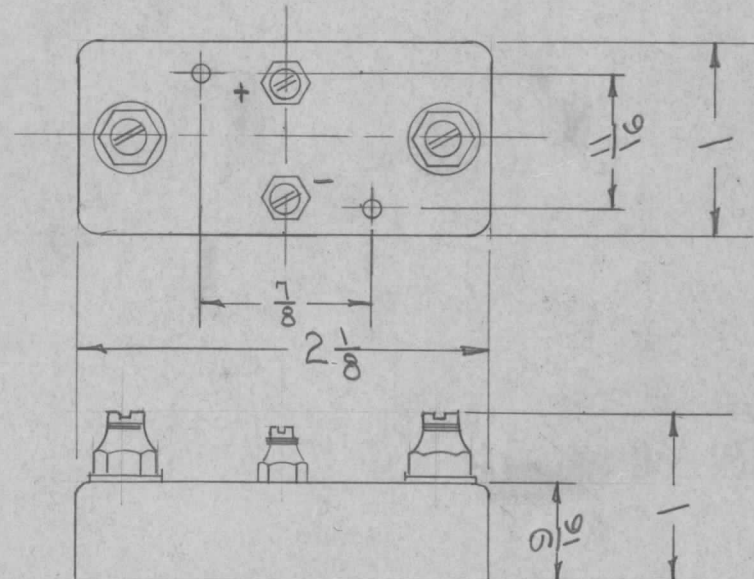
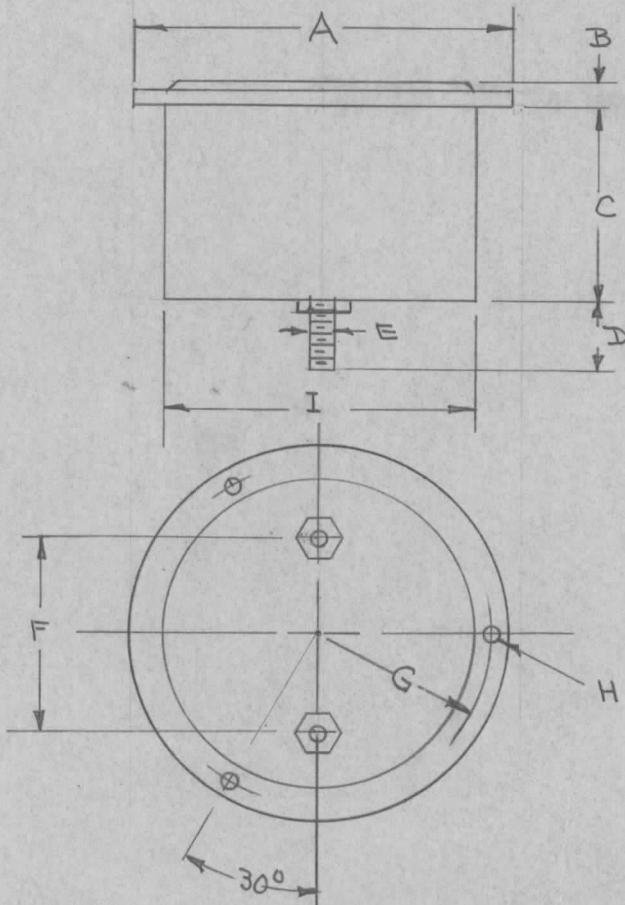
MR-105/A

MAXIMUM ALLOWABLE TOLERANCES HAVE BEEN DETERMINED AND DEVIATIONS WILL BE CAUSE FOR REJECTION. REMOVE ALL BURRS AND SHARP EDGES

USED ON

MODEL	PROJECT NO.	ASS'Y. NO.	DATE
TAC-1	132		7-29-53

TMC NO	SIMPSON MODEL NO.	A	B	C	D	E	F	G	H	I	RANGE
MR-103-1	35	3.50	.26	1.31	.68	.25	1.50	1.58	.16	2.75	0-3A



3 1/2 ROUND BAKELITE  
REF: SIMPSON MODEL 35 RANGE 0-3 A.

REQ.	ITEM	PART NO.	DESCRIPTION	SYMBOL
			THE TECHNICAL MATERIEL CORP. MAMARONECK. NEW YORK	
		STOCK SIZE	METER R.F	
		MATERIAL	W/EXTERNAL THERMOCOUPLE	
		WEIGHT PER PC.	DATE 7-29-53	
		TYPE & TEMPER	DRAWN	ELEC. DES. APP. MECH. DES. APP.
		HEAT TREAT. SPEC.	CHECKED	FINAL APPROVAL
		FINISH & SPEC. NO.		MR-105/A

A	1	DWG. NO. WASMP-103	10/13	1	WSP	WSP
ISSUE	ITEM	CHANGED FROM	DATE	CN. NO.	DRAFTS CHECKER	ENG. APP.

TOLERANCES

SCALE

ALL OTHERS  
DEC. DIM. ±  
FRAC. DIM. ±  
ANGULAR DIM. ±

DRILL, PUNCH, COMMERCIAL STOCK  
SIZES AND MANUFACTURERS  
TOLERANCES ARE NOT INCLUDED.

## APPLICATION

QTY	MODEL USED ON	ASSY NO.
2	BCT-10KA	

## REVISIONS

LTR	DESCRIPTION	DATE	E.M.N.NO	DRAFT	CHKD	APPD
X	EXPERIMENTAL RELEASE	8-2-67		C.V.		W
Ø	ORIG RELEASE FOR PROD	8/2/67		C.V.		SM
A	ADD. MR198-2	8-18-71	20432	RF		EA

TMC P/N	MFGR. SERIES	REGISTRATION	VOLTAGE	FREQUENCY
MR198-1	635 Y	9999.9 HRS.	220 VAC	60 Hz
MR198-2	635 Y	9999.9 HRS.	220 VAC	50 Hz

## NOTES:

- COUNTER WHEELS TO BE BLACK BACKGROUND WITH WHITE FIGURES.
- DECIMAL WHEEL (S) TO BE WHITE BACKGROUND WITH BLACK FIGURES.
- HOUSING: BLACK GENERAL PURPOSE PHENOLIC
- BEZEL: BLACK, HIGH-IMPACT STYRENE
- WEIGHT: 12 OZ. APPROX.
- AMBIENT TEMP.: -20°C TO +55°C

VENDOR MUST SUPPLY INFORMATION WITH THIS ITEM

INFORMATION TO CONTAIN SUFFICIENT DATA TO IDENTIFY ITS PART AND ESTABLISH ITS ELECTRICAL AND MECHANICAL CHARACTERISTICS AS DESCRIBED IN HIS PUBLISHED CATALOGS FOR QUALITY ASSURANCE

DIMENSION TOLERANCES WILL BE AS DESCRIBED IN MANUFACTURES LITERATURE.

REQ'D ITEM	PART NUMBER	DESCRIPTION	SYM.
F. BUDETTI			
LIST OF MATERIAL			
FINAL APPROVAL	DATE	THE TECHNICAL MATERIEL CORP.	
	8-4-67	MAMARONECK, NEW YORK	
MECH. DES.	DATE	INDICATOR, ELAPSED TIME	
ELECT. DES.	DATE		
CHECKED	DATE		
DRAWN	DATE		
	8/2/67		
S401-46		SIZE	ISSUE
		A	A
		CODE IDENT. NO.	DWG NO.
		82679	MR 198
		SCALE	SHEET
		W/L	OF

UNLESS OTHERWISE SPECIFIED  
DIMENSIONS ARE IN INCHES  
AND INCLUDE CHEMICALLY APPLIED  
OR PLATED FINISHES

DECIMALS  
.X ± .05  
.XX ± .01  
.XXX ± .005

FRACTIONS  
1/64  
ANGLES  
0° - 30'

MATERIAL

FINISH

NOTICE TO PERSONS RECEIVING THIS DRAWING  
THE TECHNICAL MATERIEL CORPORATION claims proprietary right in the material disclosed hereon. This drawing is issued in confidence for engineering information only and may not be reproduced or used to manufacture anything shown hereon without permission from THE TECHNICAL MATERIEL CORPORATION to the user. This drawing is loaned for mutual assistance and is subject to recall at any time.