

0-5.0/1.0KW DIAL DATA FOR SIMPSON 29 METER

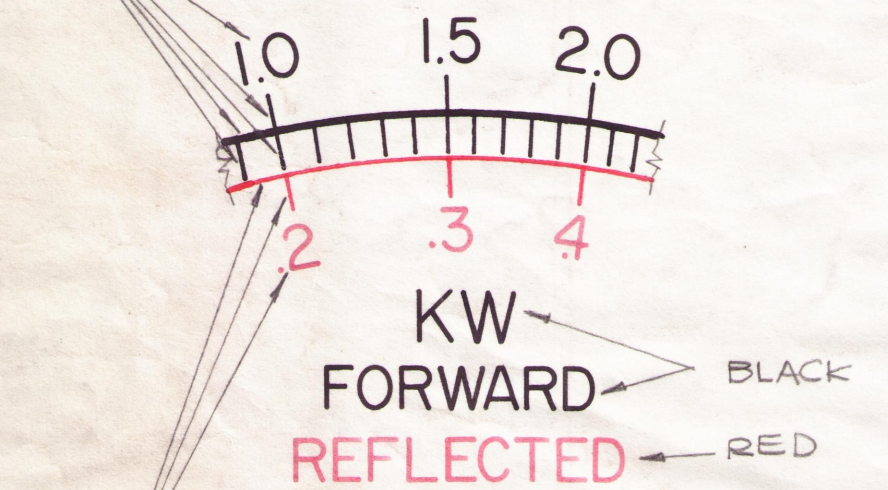
BIRD MODEL 423 THRULINE WATTMETER

(METER IS 100 MICROAMPERES ±2% WITH 1825 OHMS RESISTANCE)

5000 WATTS	1000 WATTS	MICROAMPERES	5000 WATTS	1000 WATTS	MICROAMPERES
0	0	0	2600	520	67.4
100	20	6.0	2700	540	68.9
200	40	11.2	2800	560	70.4
300	60	15.9	2900	580	71.9
400	80	20.1	3000	600	73.4
500	100	24.0	3100	620	74.8
600	120	27.3	3200	640	76.2
700	140	30.3	3300	660	77.6
800	160	33.1	3400	680	79.0
900	180	35.8	3500	700	80.4
1000	200	38.4	3600	720	81.8
1100	220	40.8	3700	740	83.2
1200	240	43.1	3800	760	84.6
1300	260	45.2	3900	780	86.0
1400	280	47.2	4000	800	87.3
1500	300	49.2	4100	820	88.6
1600	320	51.1	4200	840	89.9
1700	340	52.9	4300	860	91.2
1800	360	54.7	4400	880	92.5
1900	380	56.4	4500	900	93.8
2000	400	58.1	4600	920	95.1
2100	420	59.7	4700	940	96.4
2200	440	61.3	4800	960	97.6
2300	460	62.9	4900	980	98.8
2400	480	64.4	5000	1000	100
2500	500	65.9			

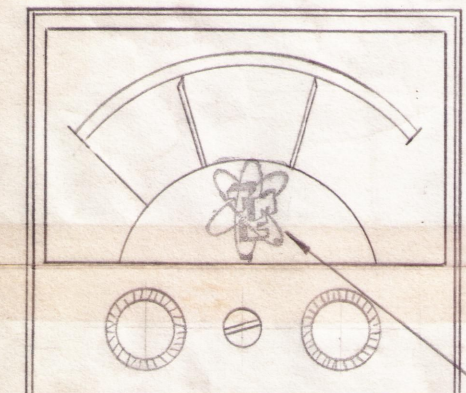
REVISIONS					
ZONE	SYM	DESCRIPTION	DATE	E.M.N. NO.	APPD
	X1	PICTORIAL OF CASE ADDED	1-3-67		
	Ø	ORIGINAL RELEASE FOR PRODUCTION	2/23/67		
	A	MOVEMENT WAS 0.100 MICROAMPS ±2% POWER REQUIREMENTS NOTE REMOVED. ADDED NOTE DIM ON PICT REVISED TO MFG SPECS	3-7-67	17918	L.A.K.

ALL UPPER NUMERALS, MAJOR & MINOR CALIBRATION POINTS TO BE IN BLACK.



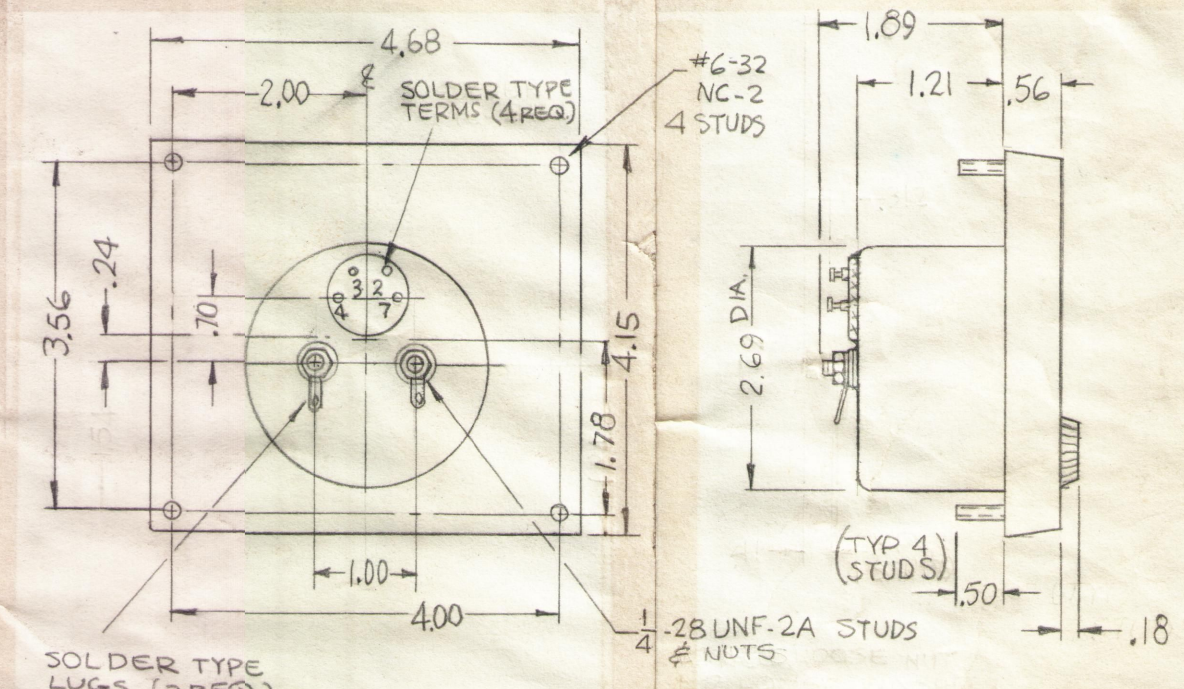
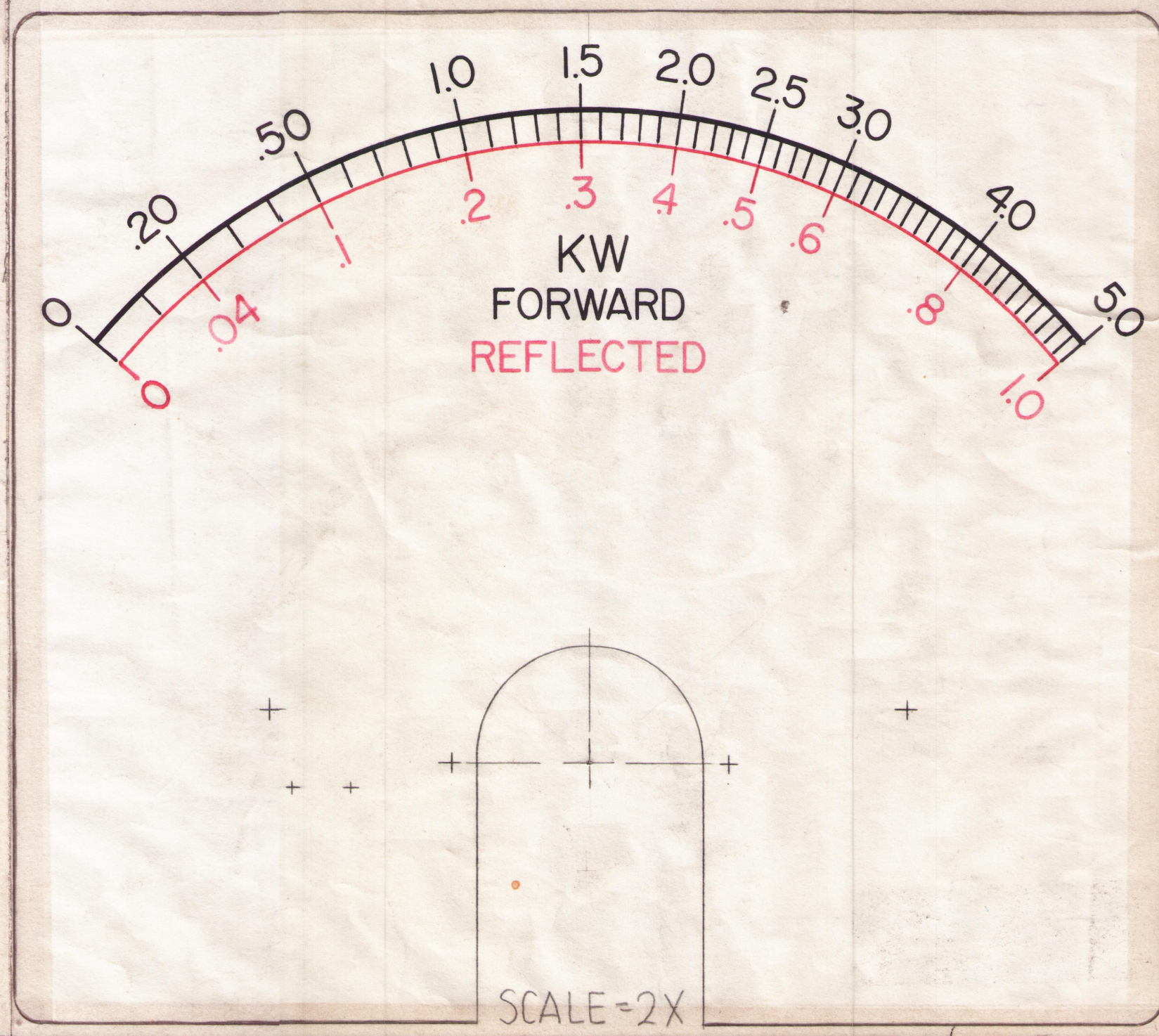
ALL LOWER NUMERALS & MAJOR CALIBRATION POINTS TO BE IN RED.

METER-DETAIL



ACTUAL SIZE INSIGNIA

INSERT TMC INSIGNIA (NP 117) IN PLACE OF WORD SIMPSON, LOCATED ON FRONT GLASS OF METER.
COLOR, TO BE BLACK. INSIGNIA CENTERED



NOTES:
-THIS METER DIAL FACE HAS BEEN DRAWN TO SCALE (2X).
-THE ORIGINAL ARTWORK TO BE SUPPLIED BY TMC FOR PHOTOGRAPHING
-METER MUST BE CALIBRATED TO CALIBRATION CURVE.
-THIS METER MUST BE PURCHASED AS A SET WHICH INCLUDES TMC NW131 AND NW132, EXCEPT FOR SPARE PARTS.

SPECIFICATIONS:

CASE- 4-1/2 RECTANGULAR, METAL DIE CAST FINISH- DULL, BLACK MATTE
MOVEMENT- 0-100 MICROAMPS ± 2%
RESISTANCE- 1825 Ω ± 2%
POINTER- KE-KNIFE EDGE
ACCURACY- 2% FULL SCALE
CONTACTLESS TYPE- MODEL 3324XA
DOUBLE CONTROL, SEPARATE METER AND CONTROL CIRCUITS

HARDWARE (SUPPLIED BY MFG) ② 1/4 LOCKWASHERS, ② 1/4-28 HEX NUTS FOR TERMINALS, ④ 6-32 LOCKWASHERS, ④ 6-32 HEX NUTS FOR MTG.

1	SWCA-3K	A5265
Q'TY./UNIT	MODEL USED ON	ASS'Y. NO.
SCALE 2:1	CODE C	S401-44

THE CONTENTS OF THIS DRAWING ARE THE EXCLUSIVE PROPERTY OF THE TECHNICAL MATERIEL CORP. ITS UNAUTHORIZED USE OR REPRODUCTION IN WHOLE OR IN PART IS STRICTLY FORBIDDEN.

REQ'D.	ITEM	PART NUMBER	DESCRIPTION	SYMBOL
F. BUDETTI LIST OF MATERIAL				
MATERIAL			THE TECHNICAL MATERIEL CORP. MAMARONECK, NEW YORK	
FINISH			TITLE METER, RELAY CONTACTLESS	
UNLESS OTHERWISE SPECIFIED DIMENSIONS ARE IN INCHES AND INCLUDE CHEMICALLY APPLIED OR PLATED FINISHES			DRAWN	DATE
DECIMALS .X ± .05 .XX ± .01 .XXX ± .005			CHECKED	DATE
FRACTIONS ± 1/64 ANGLES ± 0° 30'			ELECT. DES.	DATE
TOLERANCES			MECH. DES.	DATE
FINAL APPROVAL			DATE	REV. LTR.

NOTES

MR195
A