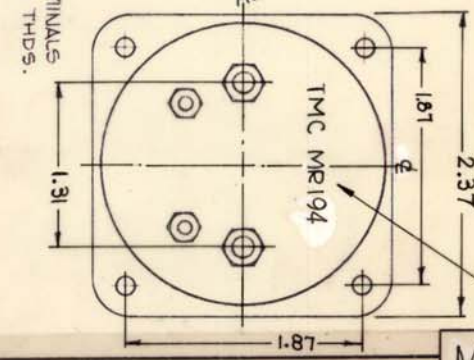
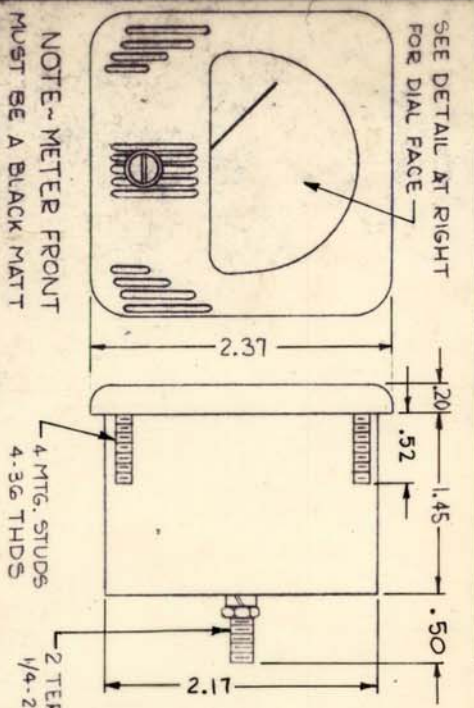


~ SPECIFICATIONS ~

- 1- CASE ~ STANDARD SIMPSON NS 127.
- 2- MOVEMENT - 504A.
- 3- APPROX. RESISTANCE ~ 2000 Ω.
- 4- POINTER TYPE - KNIFE EDGE.
- 5- ALL NECESSARY MOUNTING & TERMINAL HARDWARE SUPPLIED BY MFG.

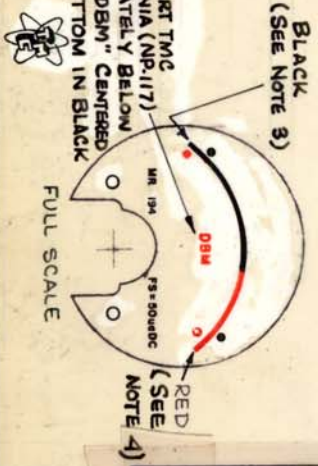


STAMP CASE AS SHOWN WITH LATEST REVISION LETTER.

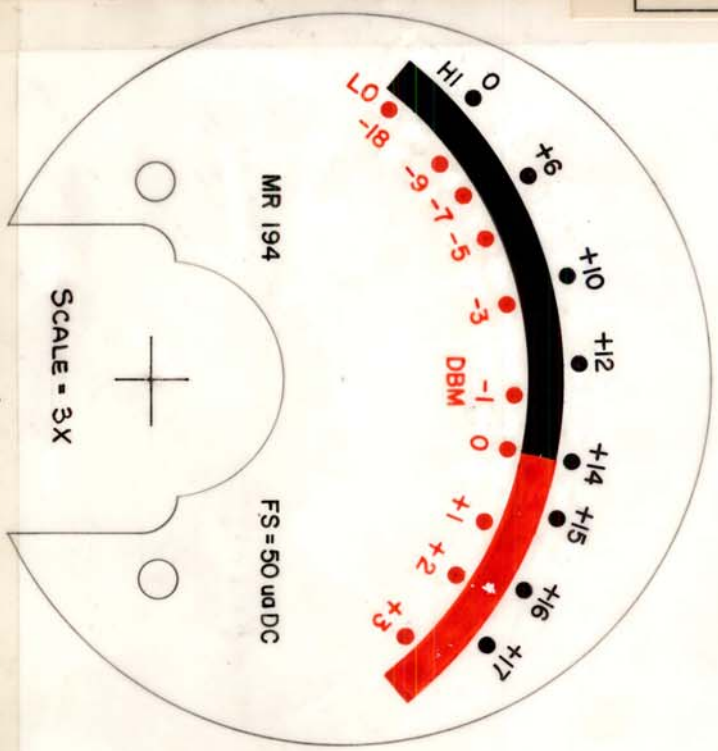
MR 194

NOTE ~ METER FRONT MUST BE A BLACK MAT FINISH, WITH LINE DESIGN AS SHOWN.

- NOTE :
1. "HI" 0, +6, +10, +12, +14, +15, +16, +17 & PERTAINING DOTS, MR194, FS=50uADC TO BE BLACK.
 2. "LO" -18, -9, -7, -5, -3, -1, 0, +1 +2, +3, DBM & PERTAINING DOTS TO BE RED.
 3. SCALE BELOW "0" DBM IS BLACK.
 4. SCALE ABOVE "0" DBM IS RED.
 5. TMC INSIGNIA IN BLACK (NP-117)
 6. BACKGROUND TO BE WHITE.



REVISIONS					
REV	DESCRIPTION	DATE	E.M. NO.	DRAWN	APPD
X1	REVISED CALL OUTS ON SCALE	9/1/65	X1	WCA	
X2	IN NOTE # FOR METER FACE "+15, +8, +4, -2, -4" DELETED	9/23/65	X2	WCA	
Ø	ORIGINAL RELEASE FOR PROD.	9/23	Ø	WCA	



THE ORIGINAL ARTWORK TO BE SUPPLIED BY TMC FOR THE PHOTOGRAPHING (SCALE 3:1)

QTY/UNIT	MODEL USED ON	APP. NO.
SCALE	ØØØØ	
	VLRE-1	

REQD. ITEM	PART NUMBER	DESCRIPTION	SYMBOL
	ZETENA	LIST OF MATERIAL	
		THE TECHNICAL MATERIEL CORP.	
		MAMARONECK, NEW YORK	
FINISH			
METER, AF			
UNLESS OTHERWISE SPECIFIED DIMENSIONS ARE IN INCHES AND INCLUDE CHEMICALLY APPLIED OR PLATED FINISHES			
DECIMALS	FRACTIONS	TOLERANCES	PLACEMENT
± .01	± 1/32	± .001	± .001
± .005	± 1/64	± .0005	± .0005
± .001	± 1/128	± .0001	± .0001
± .0005	± 1/256	± .00005	± .00005
DATE	BY	DATE	BY
9/11/65	WCA	9/23/65	WCA
DATE	BY	DATE	BY
9/23/65	WCA	9/23/65	WCA
DATE	BY	DATE	BY
9/23/65	WCA	9/23/65	WCA
DATE	BY	DATE	BY
9/23/65	WCA	9/23/65	WCA

NOTES

THE DESIGNERS OF THIS DRAWING ARE THE EXCLUSIVE PROPRIETORS OF THE TECHNICAL DRAWING COMP. ITS UNAUTHORIZED USE OR REPRODUCTION IN WHOLE OR IN PART IS STRICTLY PROHIBITED.