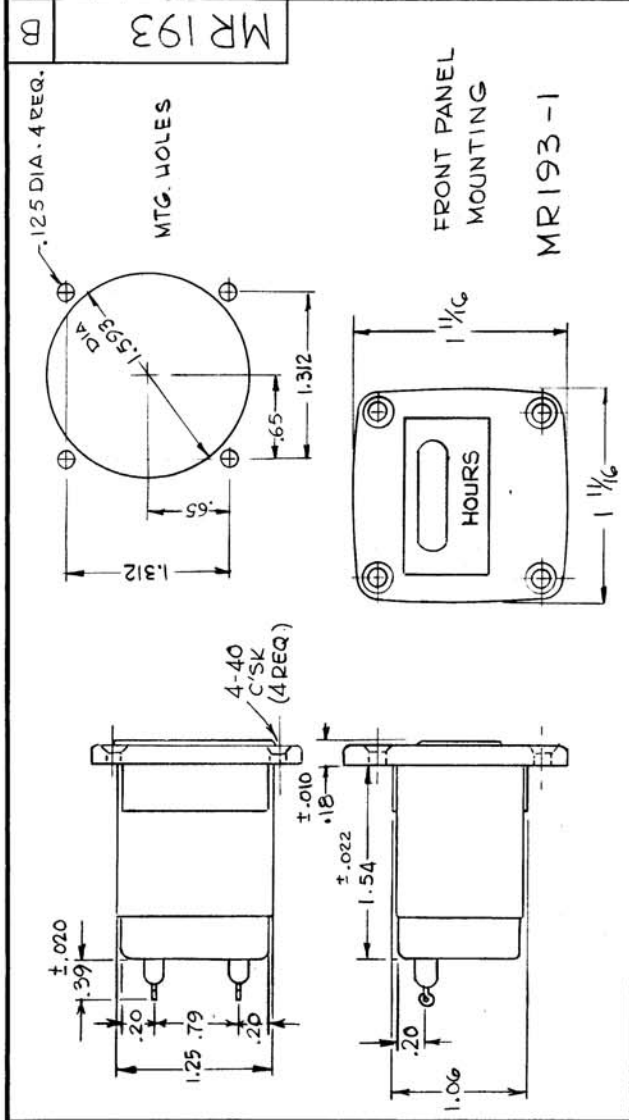


STANDARD DRAWING



TMC PART NO TO BE IN THE FOLLOWING FORM:

MR193-1-50

BASIC TMC P/N
60 CPS
ADD ONLY
WHEN 50 CPS
IS REQUIRED.

QTY/UNIT	2	MODELLED ON	API28	ASST. NO.	A5261
SCALE	DO NOT SCALE	CODE	C	5401-46	(020)

THE CONTENTS OF THIS DRAWING ARE THE EXCLUSIVE PROPERTY OF THE TECHNICAL MATERIEL CORP. ITS UNAUTHORIZED USE OR REPRODUCTION IN WHOLE OR IN PART IS STRICTLY FORBIDDEN.

NOTES

SYN	DESCRIPTION	DATE	E.M.N. NO.	DRAFT	CHKD	APPD
X1	TMC P/N MR193-2 DELETED. TOLERANCES & HARDWARE NOTE ADDED	8-25-65	X1	C.D.L	ARO	MM
A	ORIGINAL RELEASE FOR PROD.	10/16/65				
B	MFG. DYN CHGD TO 60 CPS. PCT CHGD ACCORDINGLY. ON SPECS. 25 W. WAS 30 W. ADD. DIGITS & NOTE	2/11/66	15797	H.A	ARO	X
	PART NO ADDED. MOD WAS TEST. 1 SK. 50 OR 60 CPS WAS 60 CPS	5/30/66	16471	ARO	ARO	X

TMC PART No	MFG PART No.	USED ON MODEL	REQ'D
MR193-1	620 H FRONT	AP 128	2

SPECIFICATIONS

TOTAL REGISTRATION: 9,999.9 HOURS STANDARD,
MOTOR RATING: 115 VOLTS, 2.5 WATTS MAX., 50 CPS OR 60 CPS
LIFE: 10,000 HOURS MINIMUM
WEIGHT: 4 OUNCES
HOUSINGS: HERMETICALLY SEALED, BLACK OXIDE FINISH, FRONT-PANEL MOUNTING. FRONT-PANEL MOUNTING MEETS MS28053 AND NEMA STANDARDS.

MIL-M-7793B TESTS:

HIGH ALTITUDE TO 60,000 FEET, OPERATING.
VIBRATION: 10 TO 55 CPS AT .06" DOUBLE AMPLITUDE, IN THREE MUTUALLY PERPENDICULAR DIRECTIONS.
SHOCK: 15G, 11 MILLISECONDS DURATION.
AMBIENT TEMPERATURE: FROM -55°C TO + 85°C

HARDWARE SUPPLIED BY MANUFACTURER
SCREW (4) 4-40 X 1/2" LONG PHILLIPS OVAL HEAD MACHINE SCREW, BRASS BLACK OXIDE.
HEX NUT (4) 4-40 X 1/4 X 5/64" THICK BRASS N.P.P.
LOCK WASHER (4) #4 SPLIT, STEEL
DIGITS: TENTH - RED ON WHITE
HOURS - WHITE ON BLACK
NOTE: THE ONLY MARKING TO APPEAR ON FRONT BEZEL IS "HOURS"

REQD.	ITEM	PART NUMBER	DESCRIPTION	SYMBOL
-------	------	-------------	-------------	--------

MATERIAL	LIST OF MATERIAL
	THE TECHNICAL MATERIEL CORP. MAMARONECK, NEW YORK

FINISH	TITLE	DATE	FINAL APPROV.	DATE
	METER, TIME ELAPSED	8-18-65	M.Hay	10/16/65
		8/25/65		
		11/19/66		
		8/27/65		

REVISIONS	DATE	BY	DESCRIPTION
1	8-18-65	M.Hay	ORIGINAL RELEASE FOR PROD.
2	2/11/66	H.A	MFG. DYN CHGD TO 60 CPS. PCT CHGD ACCORDINGLY. ON SPECS. 25 W. WAS 30 W. ADD. DIGITS & NOTE
3	5/30/66	ARO	PART NO ADDED. MOD WAS TEST. 1 SK. 50 OR 60 CPS WAS 60 CPS