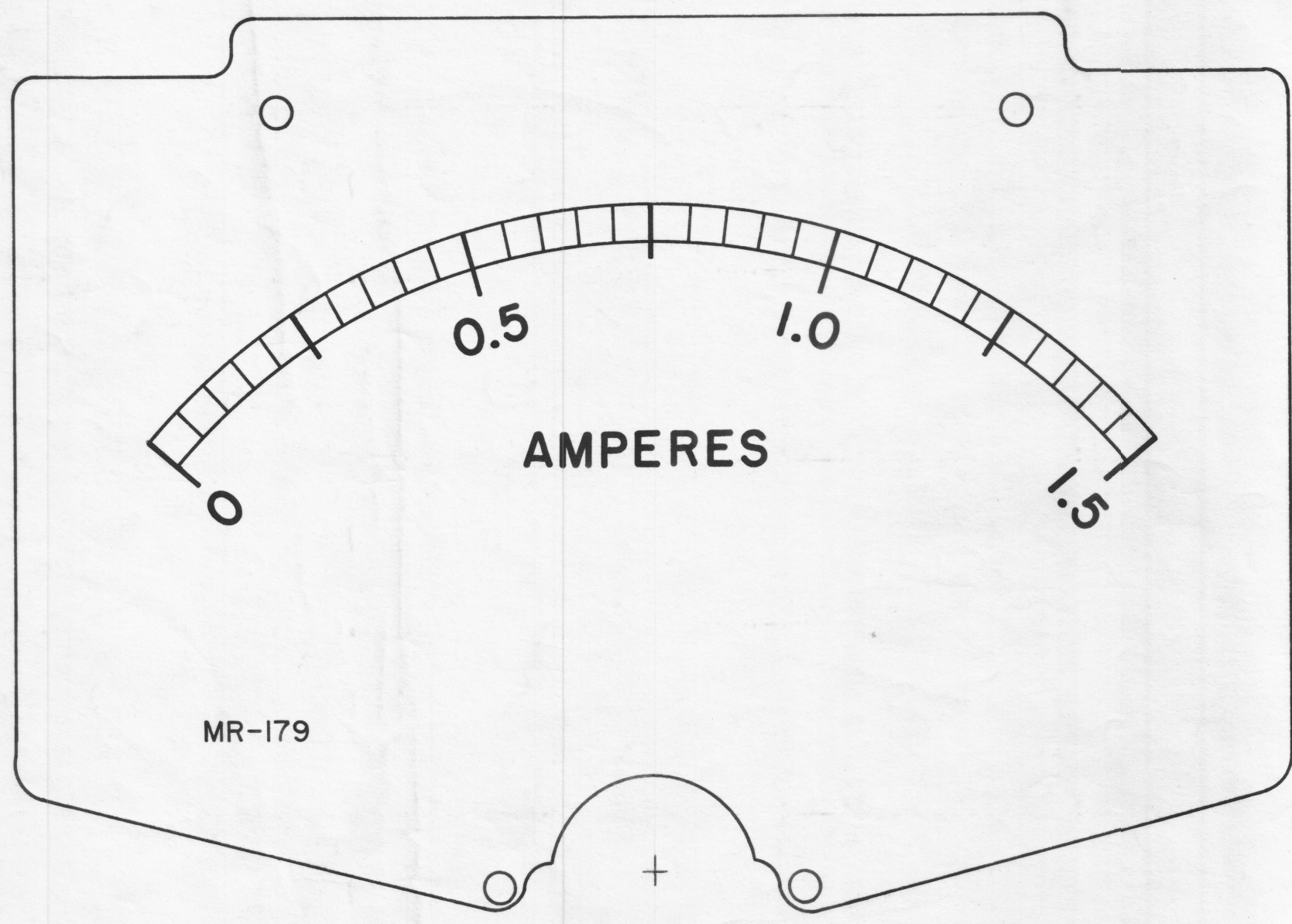
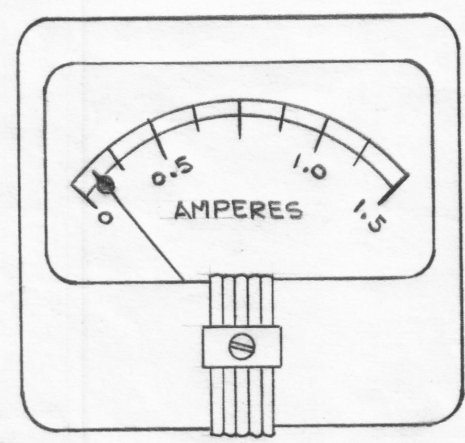
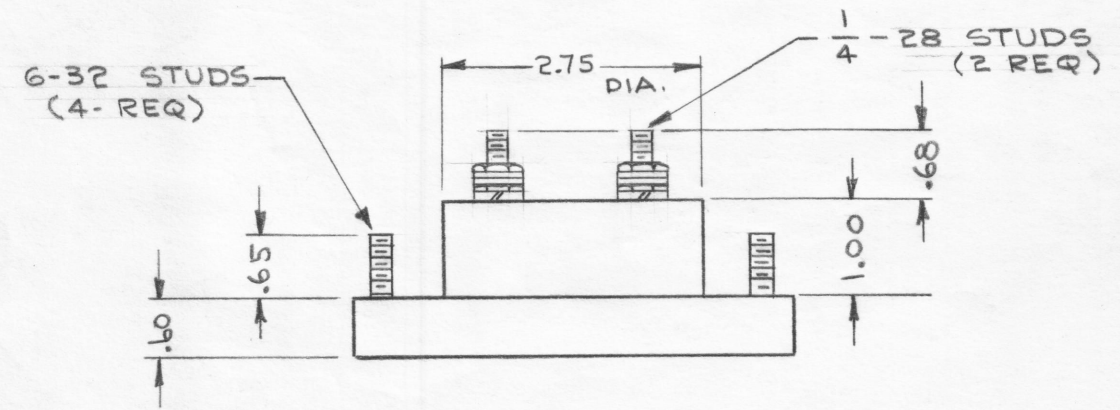
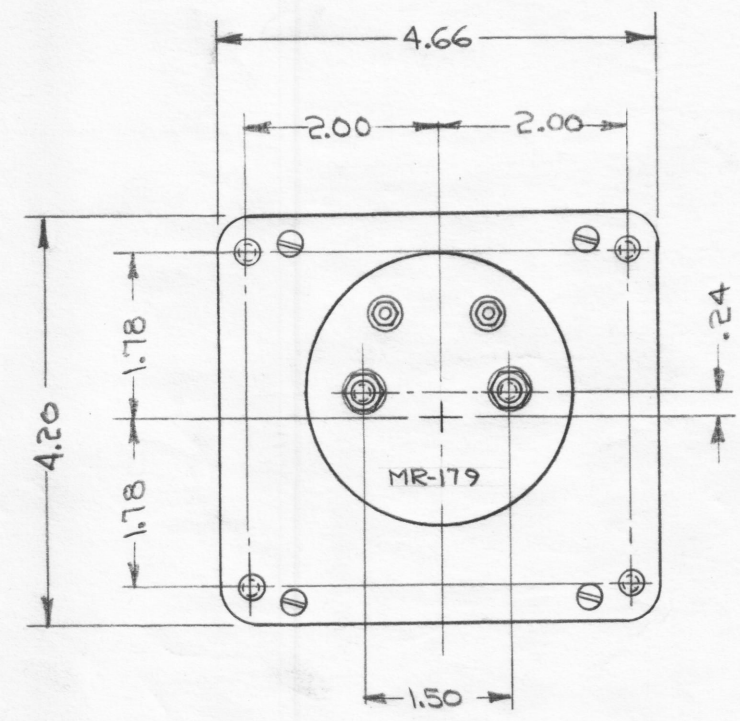


REVISIONS							
ZONE	SYM	DESCRIPTION	DATE	E.M.N. NO.	DRAFT	CHKD	APPD
	X	EXPER. RELEASE	4-9-64	1			
	X1	FACE NOTES ADDED	2-17-66	X1			
	Ø	ORIGINAL RELEASE FOR PRODUCTION	3-3-66	-#	Jc		



"A"
 INSERT TMC INSIGNIA (NP117)
 IMMEDIATELY BELOW WORD
 "AMPERES", CENTERED TO BOTTOM.

NOTES:
 CASE - STANDARD COMMERCIAL RECTANGULAR 4 1/2.
 FINISH - GLOSSY BLACK.
 MOVEMENT - 0 TO 1.5 AMPS.
 APPROXIMATE RESISTANCE - .033 OHMS
 POINTER - SPADE TYPE
 HARDWARE - TWO FLAT WASHERS, TWO 1/4-28
 HEX NUTS FOR TERMINALS.
 FOUR LOCKWASHERS, FOUR 6-32
 HEX NUTS FOR MOUNTING SUPPLIED
 BY MANUFACTURER.
 FACE - LETTERING & SCALE BLACK
 BACKGROUND WHITE.

ORIGINAL ARTWORK TO BE SUPPLIED BY TMC
 FOR PHOTOGRAPHING (SCALE 2:1)

REQ'D.	ITEM	PART NUMBER	DESCRIPTION	SYMBOL
	O. POSE		LIST OF MATERIAL	
	MATERIAL		THE TECHNICAL MATERIEL CORP. MAMARONECK, NEW YORK	
	FINISH		TITLE	
			AMMETER, D.C.	
			UNLESS OTHERWISE SPECIFIED DIMENSIONS ARE IN INCHES AND INCLUDE CHEMICALLY APPLIED OR PLATED FINISHES	
			DECIMALS .X ± .05 .XX ± .01 .XXX ± .005	
			FRACTIONS ± 1/64 ANGLES ± 0° 30'	
			DRAWN G. Sencen DATE 4-9-64	
			CHECKED JCB DATE 6-24-65	
			ELECT. DES. DATE	
			MECH. DES. DATE	
			FINAL APPROVAL DATE 3/3/66	
			MR 179	
			SHEET	
			REV. LTR.	

QTY./UNIT	MODEL USED ON	ASSY. NO.
2	GPT-10KLF	AX531
SCALE	CODE	
AS NOTED	C	5401-44 (17-29)
THE CONTENTS OF THIS DRAWING ARE THE EXCLUSIVE PROPERTY OF THE TECHNICAL MATERIEL CORP. ITS UNAUTHORIZED USE OR REPRODUCTION IN WHOLE OR IN PART IS STRICTLY FORBIDDEN.		

NOTES