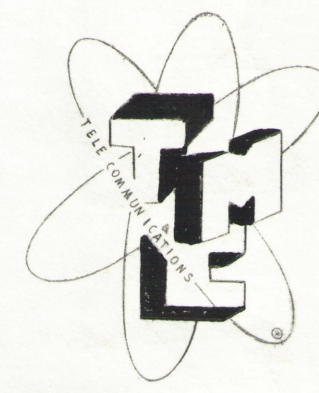
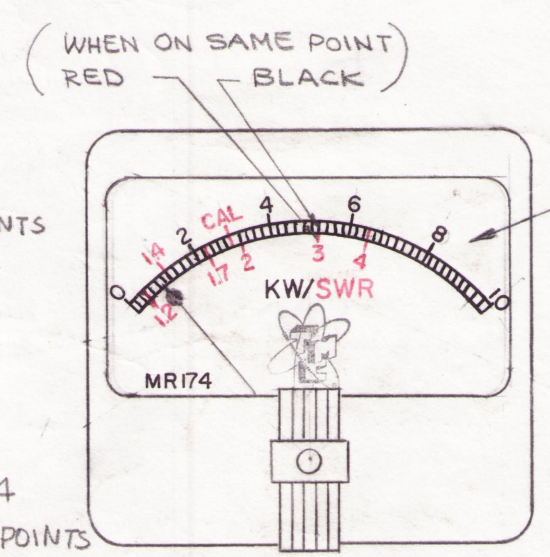
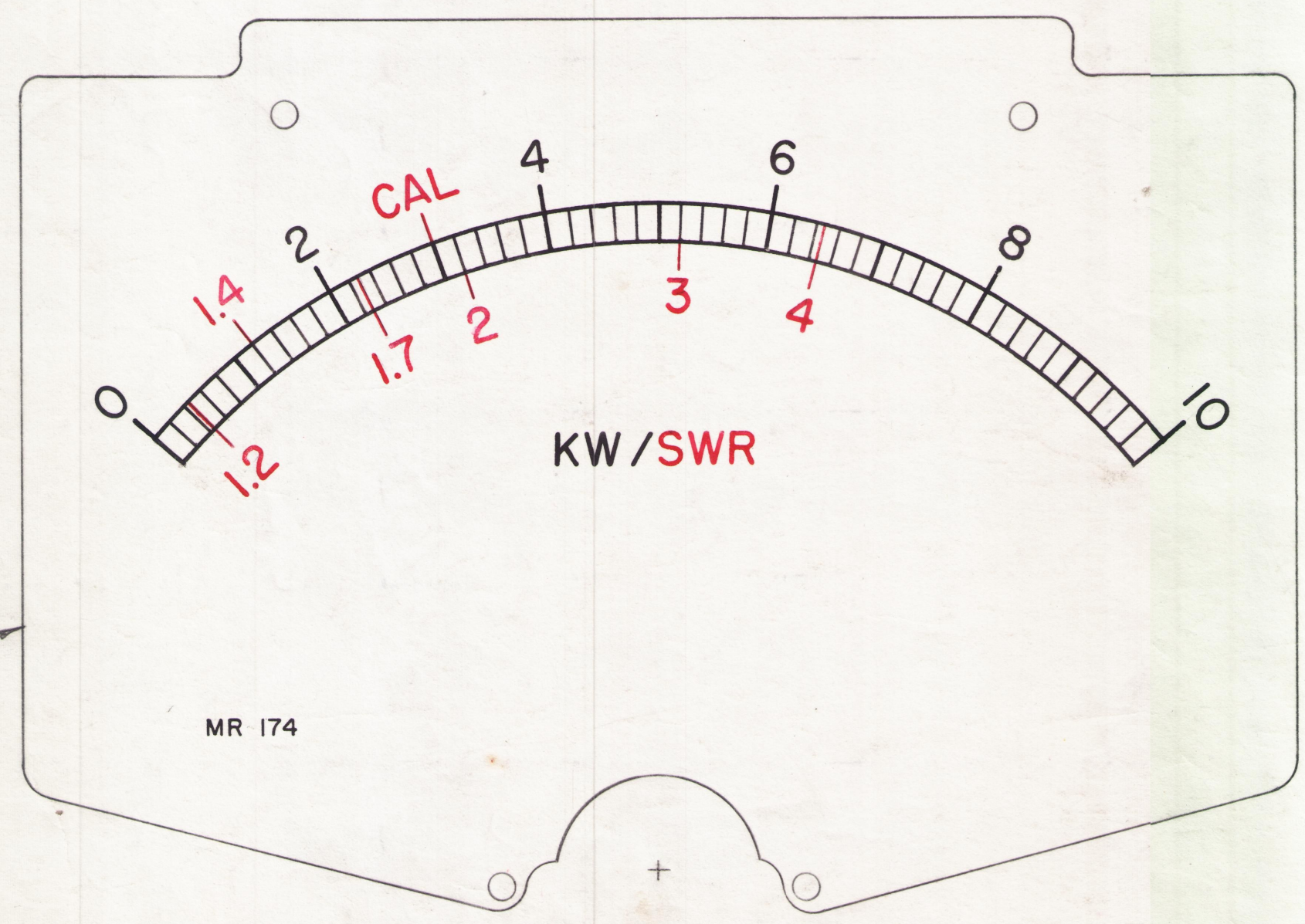
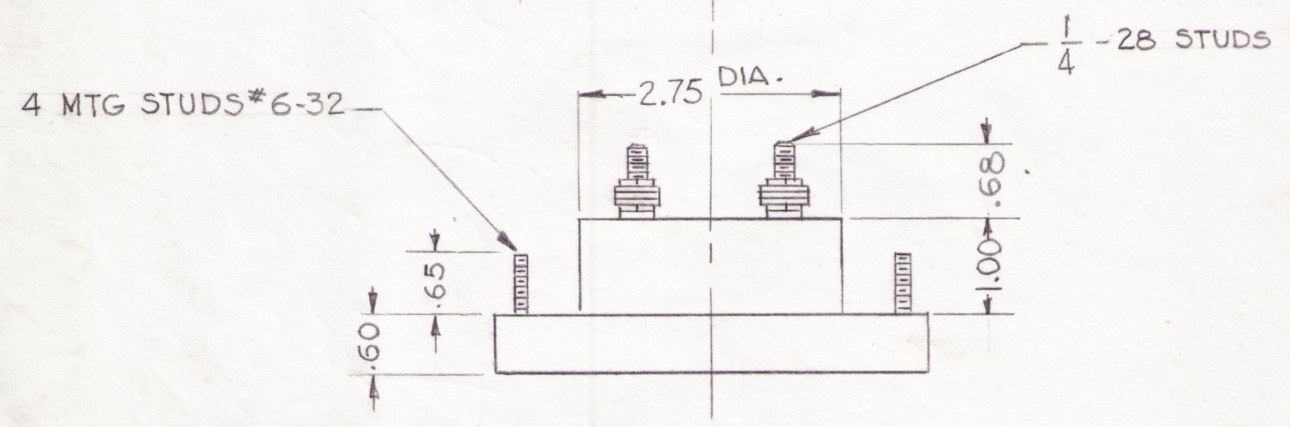
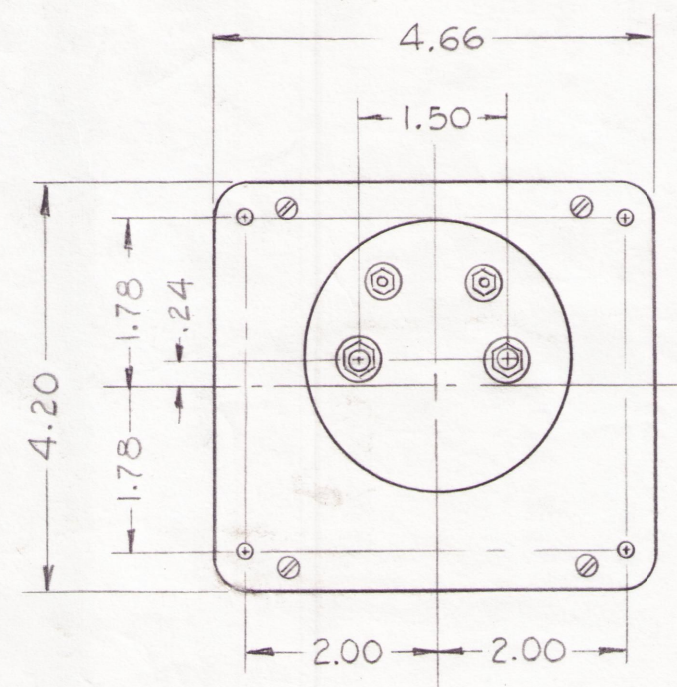


REVISIONS							
ZONE	SYM	DESCRIPTION	DATE	E.M.N. NO.	DRAFT	CHKD	APPD
	X1	REDE & BLACK NOTES ADDED	2-17-66	X1			
	Ø	ORIGINAL RELEASE FOR PRODUCTION	2-17-66			Jc	file



"A"

INSERT TMC INSIGNIA (NP117) IMMEDIATELY BELOW WORD "KW/SWR" CENTERED TO BOTTOM.



- BLACK**  
 - 0, 2, 4, 6, 8, 10  
 - MAJOR CALIBRATION POINTS  
 - SCALE.  
 - KW/
- RED**  
 - 1.2, 1.4, 1.7, CAL, 2, 3, 4  
 - MAJOR CALIBRATION POINTS  
 - SWR

(WHEN ON SAME POINT)  
 RED - BLACK

MR 174

SCALE - 2X

THIS METER DIAL FACE HAS BEEN DRAWN TO SCALE (2X)  
 THE ORIGINAL ARTWORK SHOULD BE SUPPLIED BY TMC FOR PHOTOGRAPHING.  
 ALL LETTERING, NUMERALS & LINEWORK ARE AS SHOWN IN ORIGINAL.  
 TMC INSIGNIA SHALL BE BLACK.

- CASE - STANDARD COMMERCIAL RECTANGULAR 4 1/2  
 FINISH - GLOSSY BLACK  
 MOVEMENT - 0 - 100 MICROAMPS  
 APPROX. RESISTANCE - 2000 Ω  
 POINTER - SPADE TYPE  
 HARDWARE - TWO FLAT WASHERS AND TWO 1/4-28 HEX NUTS FOR TERMINALS.  
 FOUR LOCKWASHERS AND FOUR 6-32 HEX NUTS FOR MTG. SUPPLIED BY MFG.

NOTES

1	GDT-10KLF	AX569
Q'TY./UNIT	MODEL USED ON	ASS'Y. NO.
SCALE	CODE	S401-44

THE CONTENTS OF THIS DRAWING ARE THE EXCLUSIVE PROPERTY OF THE TECHNICAL MATERIEL CORP. ITS UNAUTHORIZED USE OR REPRODUCTION IN WHOLE OR IN PART IS STRICTLY FORBIDDEN.

REQ'D.	ITEM	PART NUMBER	DESCRIPTION	SYMBOL
O. POSE LIST OF MATERIAL				
MATERIAL		THE TECHNICAL MATERIEL CORP. MAMARONECK, NEW YORK		
FINISH		TITLE METER, SWR KILOWATTS		
UNLESS OTHERWISE SPECIFIED DIMENSIONS ARE IN INCHES AND INCLUDE CHEMICALLY APPLIED OR PLATED FINISHES		DRAWN G.D.L	DATE 2-1-63	FINAL APPROVAL
DECIMALS .X ± .05 .XX ± .01 .XXX ± .005		CHECKED	DATE 6-24-65	DATE 2/17/66
FRACTIONS ± 1/64 ANGLES ± 0° 30'		ELECT. DES.	DATE	MR 174
TOLERANCES		MECH. DES.	DATE	Ø
				SHEET
				REV. LTR.

MR 174