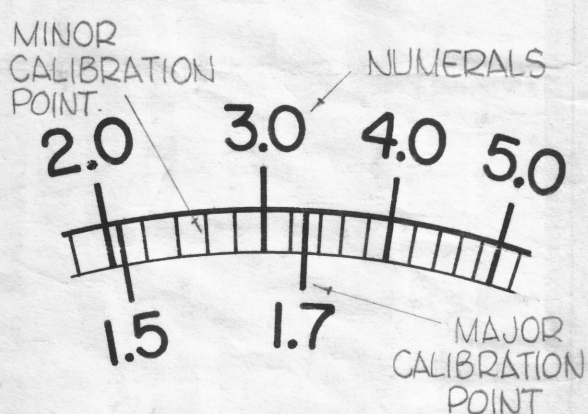


**NOTE-**

THE FOLLOWING NUMERALS LETTERS AND MAJOR CALIBRATION POINTS ARE TO BE IN RED (SEE DETAIL "J")

NUMERALS - 1.2, 1.3, 1.4, 1.5  
1.7, 2, 2.5

LETTERS - SWR

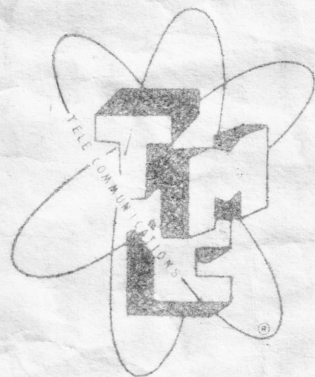


**KILOWATTS SWR**

LETTERS - **DETAIL "J"**  
(DO NOT SCALE)

MAJOR CALIBRATION POINTS - 1.2, 1.3, 1.4, 1.5, 1.7, 2, 2.5

ALL OTHER NUMERALS, LETTERS, MAJOR AND MINOR CALIBRATION POINTS OTHER THAN NAMED ABOVE ARE TO BE IN BLACK.

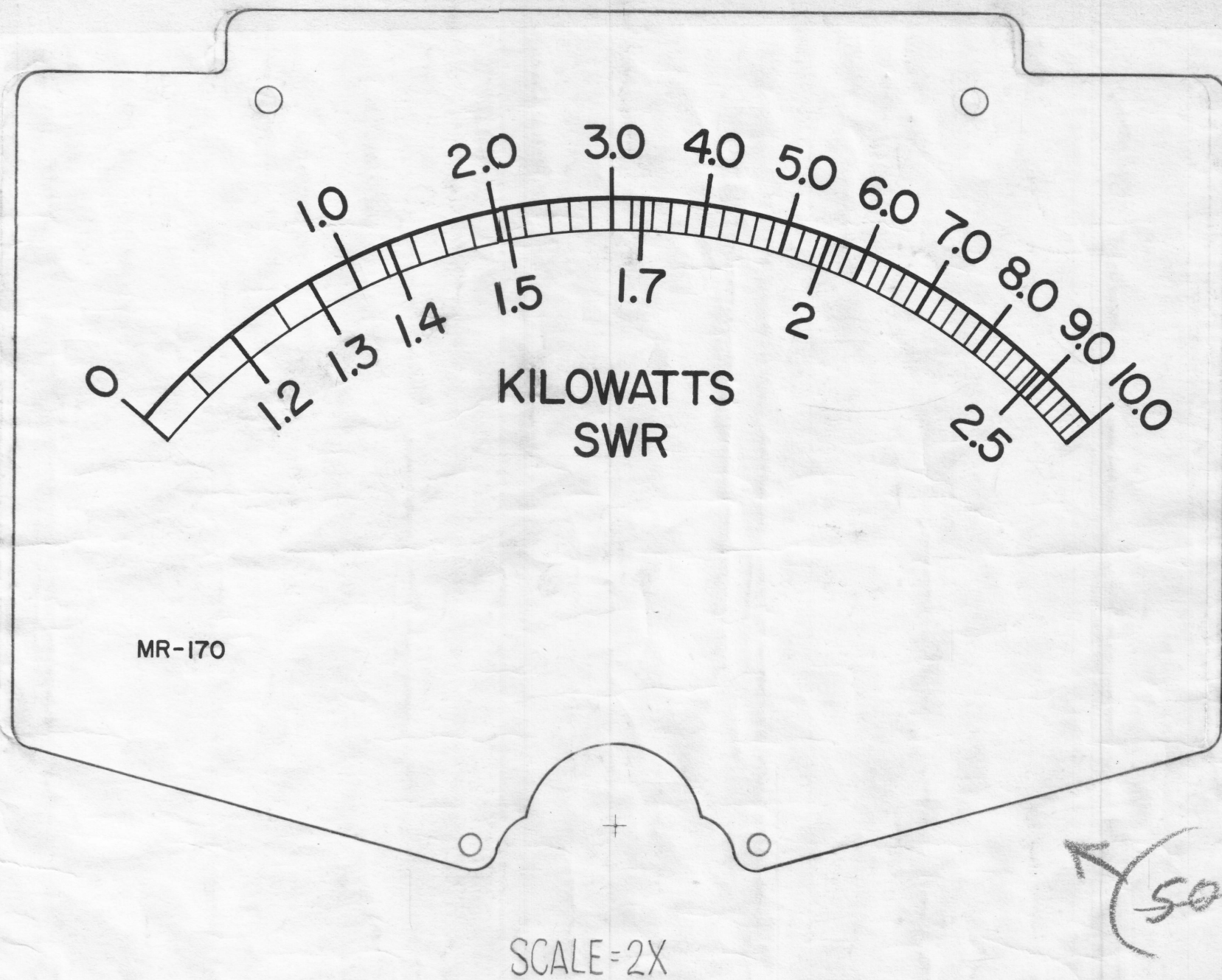


INSERT TMC INSIGNIA (NP-117) IMMEDIATELY BELOW WORD "SWR" CENTERED TO BOTTOM IN BLACK.

0-10 KW DIAL DATA FOR SIMPSON 29 METER.  
(METER IS 100 MICROAMPERES ±2% WITH 1825 OHMS RESISTANCE)

**CALIBRATION CURVE**

KILOWATTS	MICROAMPS	KILOWATTS	MICROAMPS
0	0	5.0	65.9
.2	6.0	.2	67.4
.4	11.2	.4	68.9
.6	15.9	.6	70.4
.8	20.1	.8	71.9
1.0	24.0	6.0	73.4
.2	27.3	.2	74.8
.4	30.3	.4	76.2
.6	33.1	.6	77.6
.8	35.8	.8	79.0
2.0	38.4	7.0	80.4
.2	40.8	.2	81.8
.4	43.1	.4	83.2
.6	45.2	.6	84.6
.8	47.2	.8	86.0
3.0	49.2	8.0	87.3
.2	51.1	.2	88.6
.4	52.9	.4	89.9
.6	54.7	.6	91.2
.8	56.4	.8	92.5
4.0	58.1	9.0	93.8
.2	59.7	.2	95.1
.4	61.3	.4	96.4
.6	62.9	.6	97.6
.8	64.4	.8	98.8
5.0	65.9	10.0	100



**NOTE:**  
THIS METER DIAL FACE HAS BEEN DRAWN TO SCALE (2X). THE ORIGINAL ART WORK SHOULD BE OBTAINED FROM TMC FOR PHOTOGRAPHING. METER MUST BE CALIBRATED TO CALIBRATION CURVE.

**SPECIFICATIONS**

CASE - STANDARD COMMERCIAL RECTANGULAR 4-1/2".  
FINISH - GLOSSY BLACK  
MOVEMENT - 0-100 MICROAMPS ± 2%  
RESISTANCE - 1825Ω ± 2%  
POINTER - SPADE TYPE  
ACCURACY - 2% FULL SCALE.

HARDWARE (SUPPLIED BY MFG.) ② 1/4 LOCKWASHERS, ② 1/4-28 HEXAGON NUTS FOR TERMINALS. ④ 6-32 LOCKWASHERS, ④ 6-32 HEXAGON NUTS FOR MOUNTING.

1	GPT10K1	7/AM122
QTY/UNIT	MODEL USED ON	ASSY. NO.
SCALE 2:1	CODE A	

THE CONTENTS OF THIS DRAWING ARE THE EXCLUSIVE PROPERTY OF THE TECHNICAL MATERIEL CORP. ITS UNAUTHORIZED USE OR REPRODUCTION IN WHOLE OR IN PART IS STRICTLY FORBIDDEN.

**NOTES**

**REVISIONS**

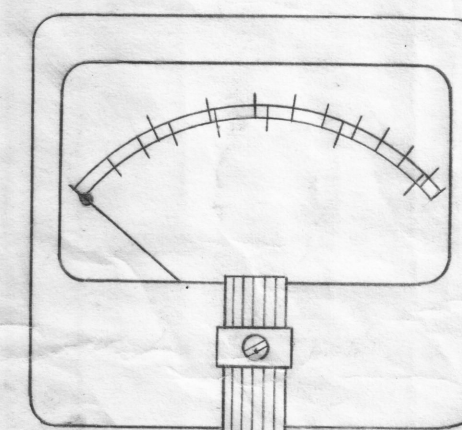
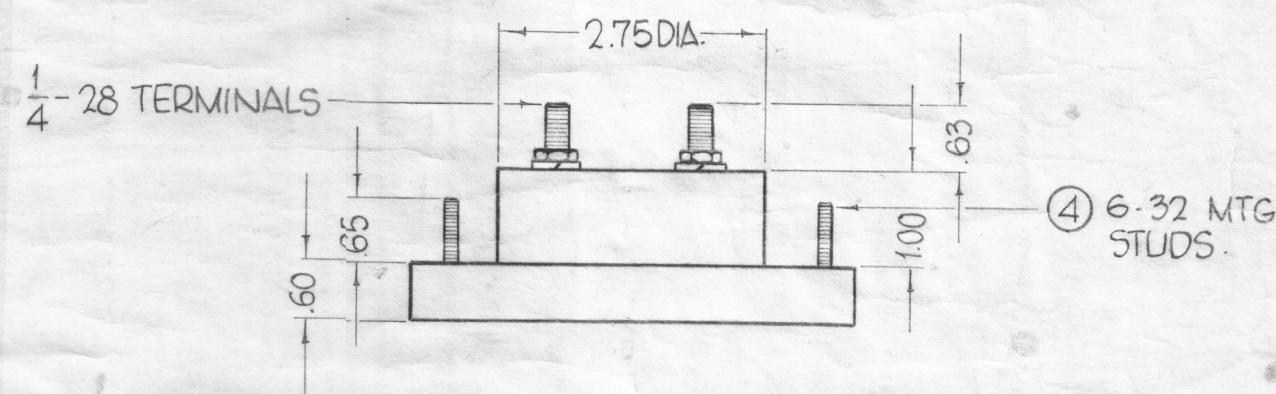
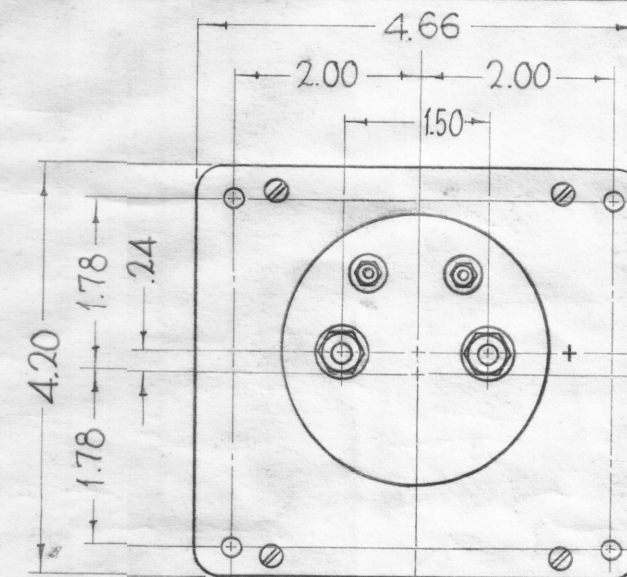
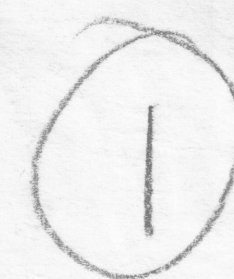
ZONE	SYM	DESCRIPTION	DATE	E.M.N. NO.	DRAFT	CHKD	APPD
0		ORIGINAL RELEASE FOR PRODUCTION	5-4-64		SRG		
B6	A	CALIBRATION CHART & METER MUST BE CALIB. NOTE ADD. SPECS: MOVE. & RESIS. ±2% ADD., ACCURACY WAS 5%	5.19.64	11430	JWB		RB

**NOTICE TO PERSONS RECEIVING THIS DRAWING**

THE TECHNICAL MATERIEL CORPORATION claims proprietary right in the material disclosed herein. This drawing is issued in confidence for engineering information only and may not be reproduced or used to manufacture anything shown herein without permission from THE TECHNICAL MATERIEL CORPORATION to the user. This drawing is loaned for mutual assistance and is subject to recall at any time.

Property of:

THE TECHNICAL MATERIEL CORPORATION  
MAMARONECK, NEW YORK



MR-170 A

REQ'D.	ITEM	PART NUMBER	DESCRIPTION	SYMBOL
F. BUDETTI LIST OF MATERIAL				
MATERIAL			THE TECHNICAL MATERIEL CORP. MAMARONECK, NEW YORK	
FINISH			TITLE METER, SWR - KILOWATTS	
UNLESS OTHERWISE SPECIFIED DIMENSIONS ARE IN INCHES AND INCLUDE CHEMICALLY APPLIED OR PLATED FINISHES		DRAWN John C. Biele	DATE 11/11/62	FINAL APPROVAL [Signature]
DECIMALS .X ± .05 .XX ± .01 .XXX ± .005	FRACTIONS ± 1/64 ANGLES ± 0° 30'	ELECT. DES. [Signature]	DATE 5/7/64	DATE MR-170
TOLERANCES				REV. LTR. A