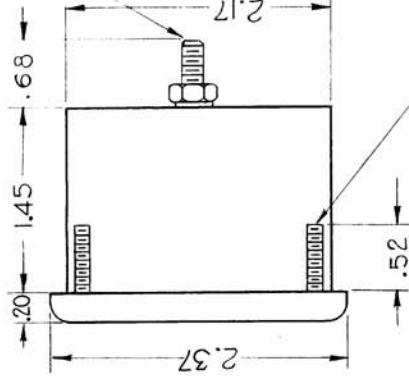
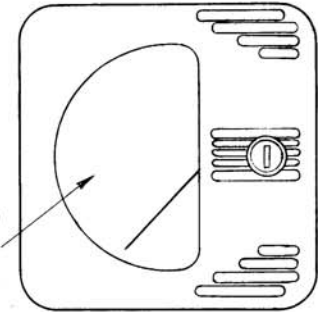


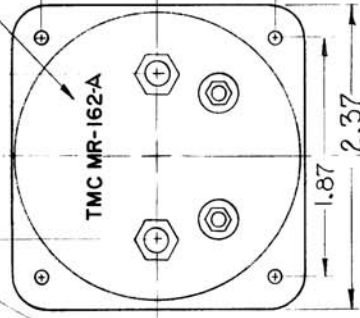
THE CONTENTS OF THIS DRAWING ARE THE EXCLUSIVE PROPERTY OF THE TECHNICAL MATERIEL CORP. ITS UNAUTHORIZED USE OR REPRODUCTION IN WHOLE OR IN PART IS STRICTLY FORBIDDEN.

SEE DETAIL AT RIGHT FOR DIAL FACE



2 TERMINALS  
1/4 - 28

STAMP CASE AS SHOWN

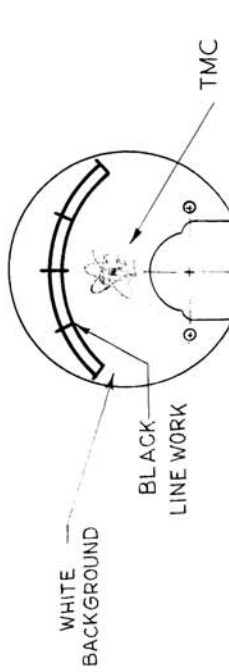


4 MTG. STUDS  
4-40 THDS

NOTE: CASE FRONT MUST BE A BLACK MATT FINISH, WITH LINE DESIGN AS SHOWN.

SPECIFICATIONS:

CASE - STANDARD SIMPSON No. 127  
MOVEMENT - 0-50  $\mu$ AMPS  
APPROX. RESISTANCE - 2000 OHMS  $\pm$  50%  
POINTER TYPE - KNIFE EDGE. ALL NECESSARY MOUNTING & TERMINAL HARDWARE SUPPLIED BY MFG.



SCALE = 3X

MR-162

REQ. ITEM	PART NO.	SYMBOL
STROHER		DESCRIPTION
THE TECHNICAL MATERIEL CORP. MAMARONECK, NEW YORK		
STOCK SIZE		
MATERIAL		
TYPE & TEMPER HEAT TREAT. SPEC.		
FINISH & SPEC. NO.		
DRAWN		CHECKED
ELEC. DES. APP.		MECH. DES. APP.
G.D.L.		6.P
MR-162		FINAL APPROVAL

DATE	CH. NO.	DRAFTS	CHECKER	ENG. APP.
8-15-62				
SCALE: DO NOT SCALE	MAXIMUM ALLOWABLE TOLERANCES HAVE BEEN DETERMINED AND ANY DEVIATIONS WILL BE CAUSE FOR REJECTION. REMOVE ALL BURRS AND SHARP EDGES			
1	HFS-1			
REQ. PER UNIT	M DEL	SECTION	ASBY. NO.	DATE

SYM	DESCRIPTION	DATE	CH. NO.	DRAFTS	CHECKER	ENG. APP.
A	MTG STUDS WERE 4-36 THD.	8-15-62				
UNLESS OTHERWISE SPECIFIED:						
DIMENSIONS ARE IN INCHES						
TOLERANCES ON FRACTIONS $\pm$ 1/64 DECIMALS $\pm$ .05 ANGLES $\pm$ 1/2°						