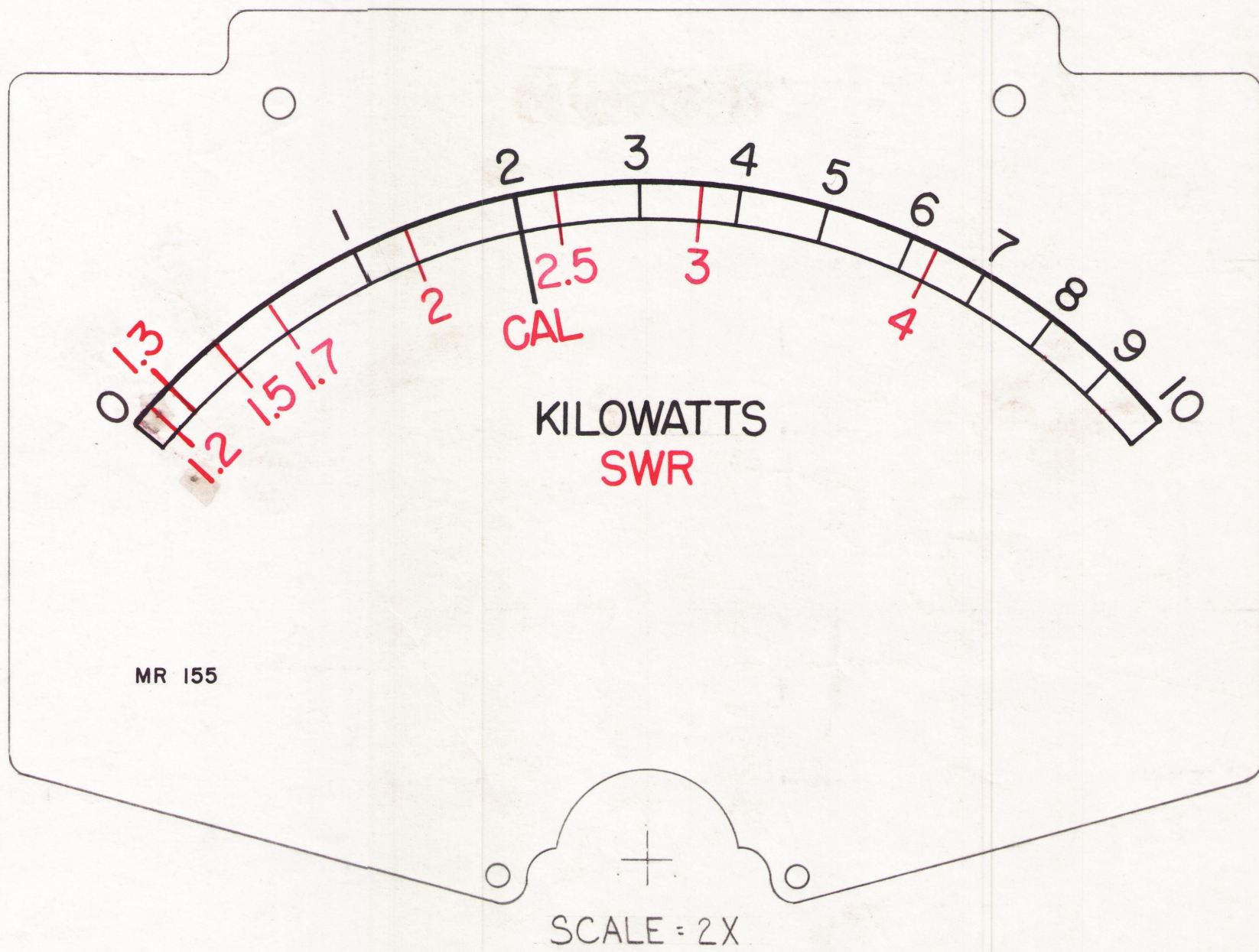


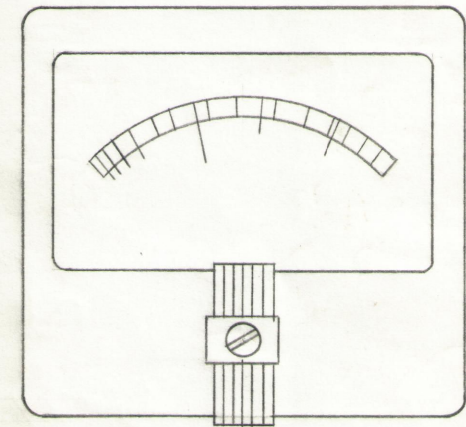
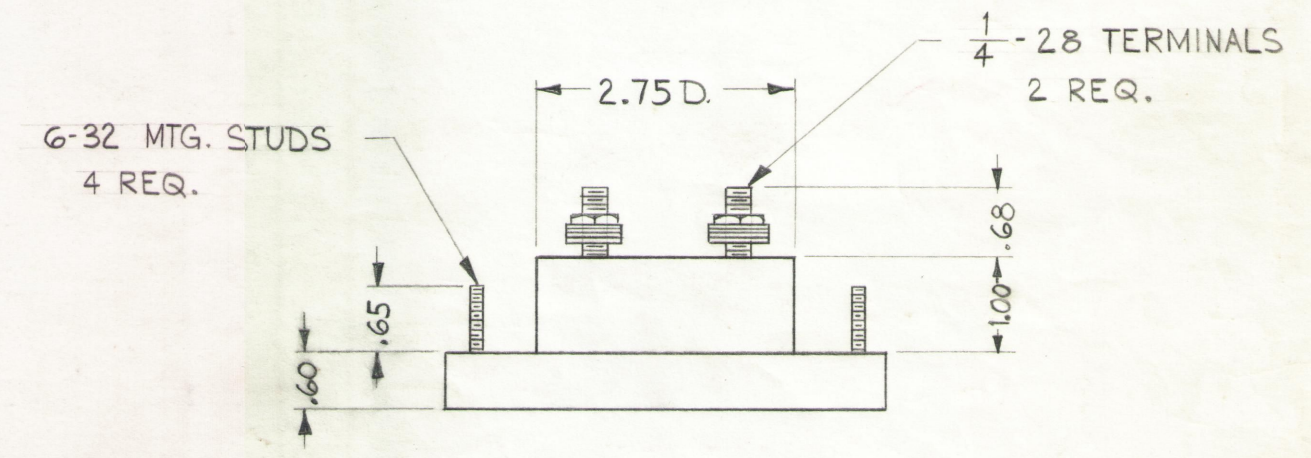
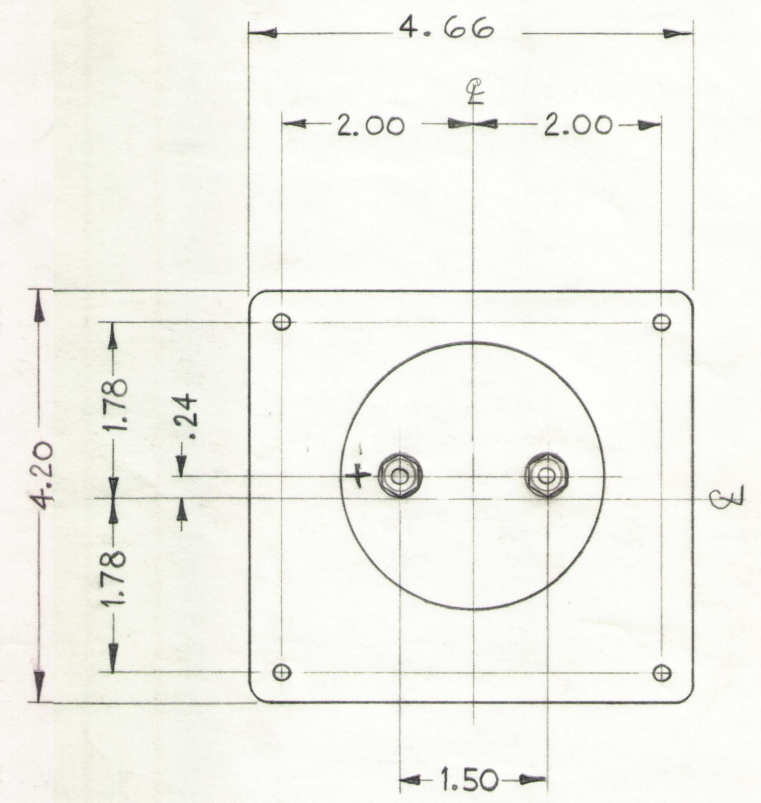
- NOTES ~
- 1~ THE FOLLOWING NUMERALS, LETTERS & CALIBRATION POINTS (SEE DETAIL "A") EXCEPT FOR MAJOR CALIBRATION POINT AT WORD "CAL" LOCATED AT LOWER SCALE. 1.2, 1.3, 1.5, 1.7, 2, 2.5, 3, 4, SWR & CAL ARE TO BE RED.
 - 2~ ALL NUMERALS LOCATED ON UPPER SCALE ARE TO BE BLACK EXCEPT 1.3.
 - 3~ ALL OTHER NUMERALS, LETTERS, & CALIBRATION POINTS OTHER THAN NAMED ABOVE ARE TO BE IN BLACK.



4~ INSERT TMC INSIGNIA (NP 117) DIRECTLY BELOW WORD "SWR" CENTERED TO BOTTOM. INSIGNIA TO BE BLACK.



- NOTES ~
- CASE ~ STANDARD COMMERCIAL RECTANGULAR 4 1/2".
 - FINISH ~ GLOSSY BLACK.
 - MOVEMENT ~ 0-100 MICROAMPS ± 2%
 - APPROXIMATE RESISTANCE ~ 2000 Ω.
 - POINTER ~ SPADE TYPE.
 - HARDWARE ~ (2) FLAT WASHERS, (2) 1/4"-28 HEX NUTS FOR TERMINALS, (4) LOCKWASHERS, (4) 6-32 HEXAGON NUTS FOR MOUNTING, SUPPLIED BY MANUFACTURER.
 - DESIGNED FOR USE WITH THRULINE DIRECTIONAL WATTMETER TMC # DC 102.



CALIBRATION	
SCALE MARKING	METER CURRENT ± 3 μA
0	0
1 KW	24.0 μA
2 KW	38.4 μA
3 KW	49.2 μA
4 KW	58.1 μA
5 KW	65.9 μA
6 KW	73.4 μA
7 KW	80.4 μA
8 KW	87.3 μA
9 KW	93.8 μA
10 KW	100 μA

SYM	ZONE	DESCRIPTION	DATE	CH. NO.	DRAFTS	CHECKER	ENG. APP.
A		CALIBRATION CHART ADDED; NOTES, UNDER MOVEMENT ± 2% ADDED.	6-7-66	16350	N.C.	CB	OB

UNLESS OTHERWISE SPECIFIED:
DIMENSIONS ARE IN INCHES
TOLERANCES ON
FRACTIONS ± 1/64 DECIMALS ± .005 ANGLES ± 1/2°

SCALE
MAXIMUM ALLOWABLE TOLERANCES HAVE BEEN DETERMINED AND ANY DEVIATIONS WILL BE CAUSE FOR REJECTION.
REMOVE ALL BURRS & SHARP EDGES

REQ. PER UNIT	MODEL	SECTION	ASS'Y. NO.	DATE
1	KIT 113		DC 102	10-31-61

USED ON

REQ. ITEM	PART NO.	DESCRIPTION	SYMBOL
		THE TECHNICAL MATERIEL CORP. MAMARONECK, NEW YORK	
		METER, SWR, KILOWATTS	
		MATERIAL	
		TYPE & TEMPER	
		HEAT TREAT. SPEC.	
		FINISH & SPEC. NO.	
		ELEC. DES. APP.	
		MECH. DES. APP.	
		SHEET OF	

DRAWN: [Signature] CHECKED: [Signature] FINAL APPROVAL: [Signature]

MR 155 A