

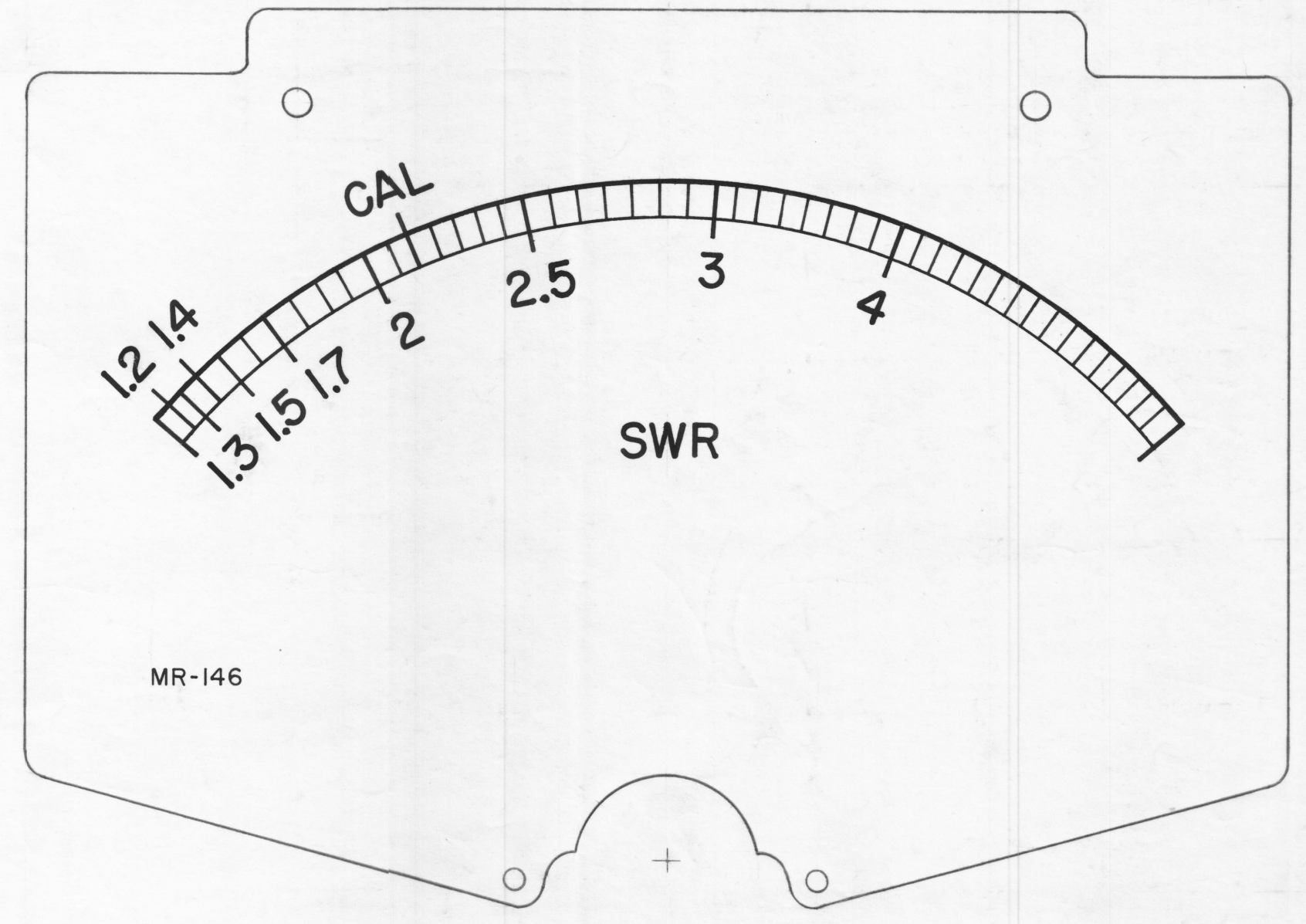
**NOTICE TO PERSONS RECEIVING THIS DRAWING**

THE TECHNICAL MATERIEL CORPORATION claims proprietary right in the material disclosed hereon. This drawing is issued in confidence for engineering information only and may not be reproduced or used to manufacture anything shown hereon without permission from THE TECHNICAL MATERIEL CORPORATION to the user. This drawing is loaned for mutual assistance and is subject to recall at any time.

Property of:  
THE TECHNICAL MATERIEL CORPORATION  
MAMARONECK, NEW YORK

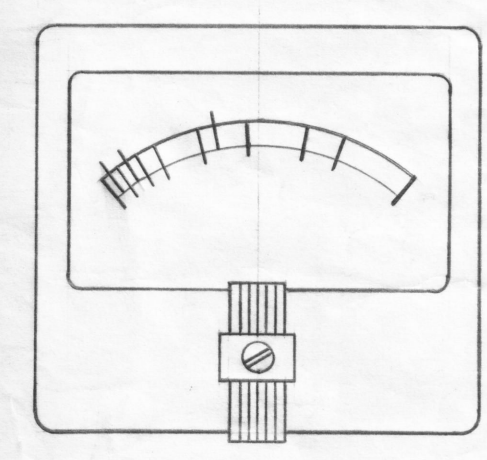
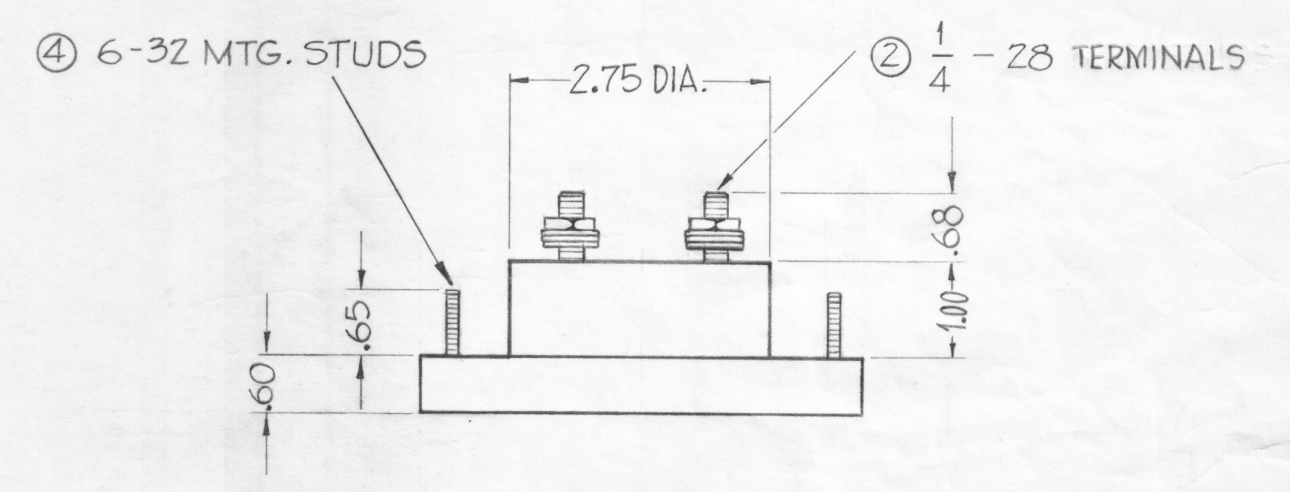
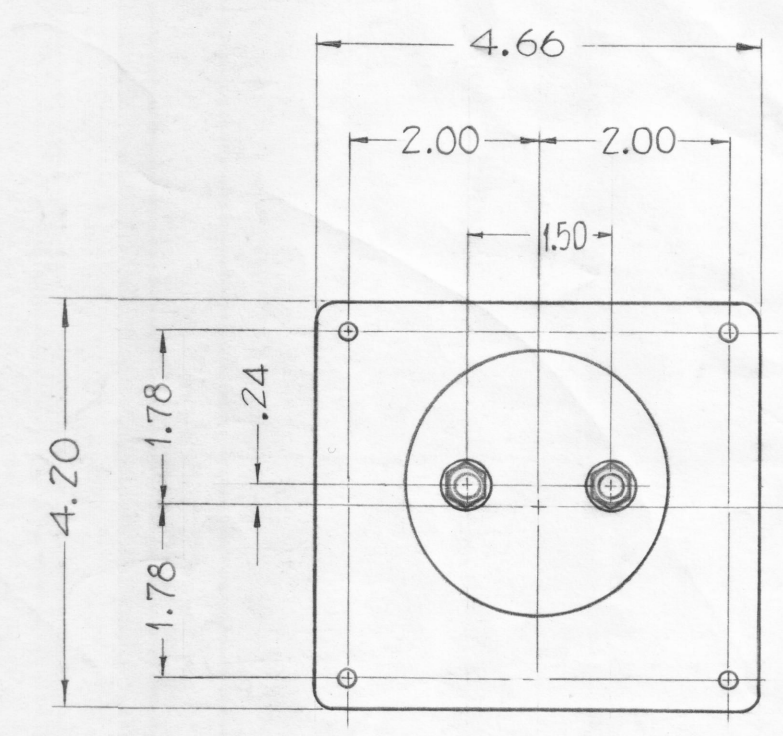


INSERT TMC INSIGNIA (NP-117) IMMEDIATELY BELOW WORD "SWR" CENTERED TO BOTTOM.



SCALE = 2X

- NOTES ~
- CASE - STANDARD COMMERCIAL RECTANGULAR 4 1/2"
  - FINISH - GLOSSY BLACK.
  - MOVEMENT - 0 - 100 MICROAMPS.
  - APPROXIMATE RESISTANCE - 2000 Ω
  - POINTER - SPADE TYPE
  - HARDWARE - ② FLAT WASHERS, ② 1/4" - 28 HEXAGON NUTS FOR TERMINALS, ④ LOCK-WASHERS, ④ 6-32 HEXAGON NUTS, FOR MOUNTING, SUPPLIED BY MANUFACTURER.



FOR ALTERNATE METHOD OF PURCHASE AND ASSEMBLY SEE TMC SPEC. S-467

SYM	ZONE	DESCRIPTION	DATE	CH. NO.	DRAFTS	CHECKER	ENG. APP.
A	F1	1/4-28 Terminals Was 1/4-28 Mtg. Studs	4/3/61	4538	JDM	JCS	DB

UNLESS OTHERWISE SPECIFIED:  
DIMENSIONS ARE IN INCHES  
TOLERANCES ON  
FRACTIONS ± 1/64    DECIMALS ± .005    ANGLES ± 1/2°

SCALE  
MAXIMUM ALLOWABLE TOLERANCES HAVE BEEN DETERMINED AND ANY DEVIATIONS WILL BE CAUSE FOR REJECTION. REMOVE ALL BURRS & SHARP EDGES

REQ. PER UNIT	MODEL	SECTION	ASS'Y. NO.	DATE
1	GPT-40K	AT-101		10-27-60

REQ. ITEM	PART NO.	DESCRIPTION	SYMBOL
		THE TECHNICAL MATERIEL CORP. MAMARONECK, NEW YORK	
		METER, SWR	
		J.C. Biele	DB
		DRAWN	CHECKED
		FINAL APPROVAL	
		MR-146 A	
		ELEC. DES. APP.	MECH. DES. APP.
		SHEET OF	