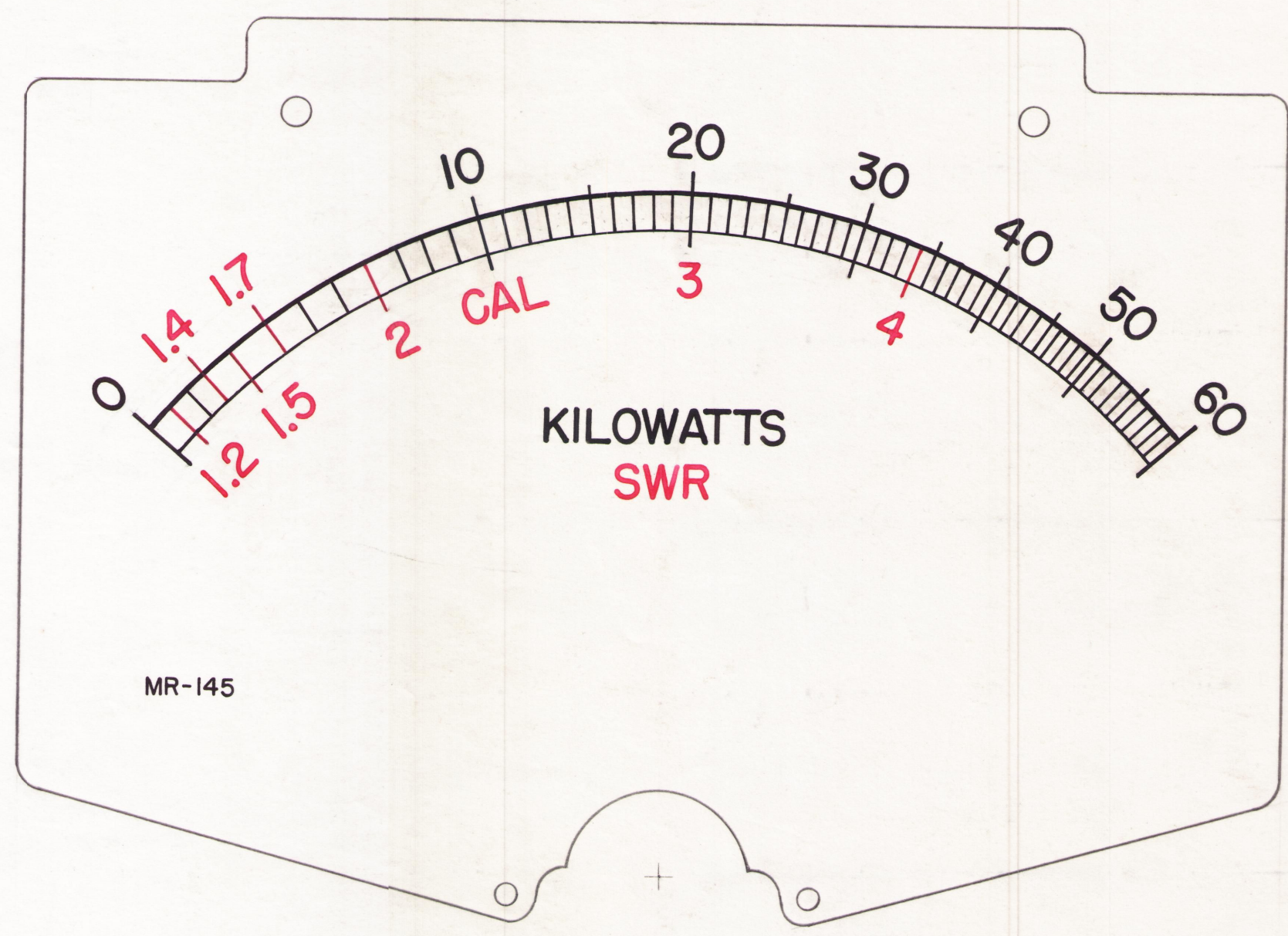
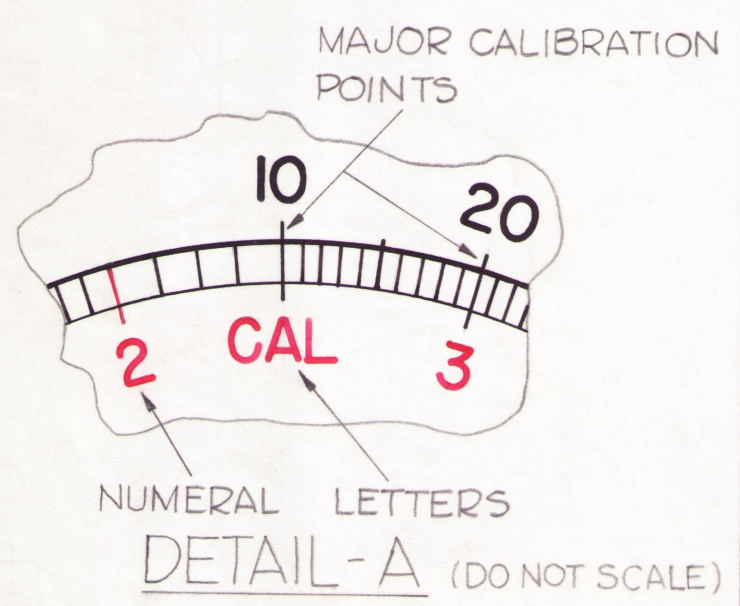


NOTE -

THE FOLLOWING NUMERALS, LETTERS AND MAJOR CALIBRATION POINTS (SEE DETAIL A) ARE TO BE IN RED:

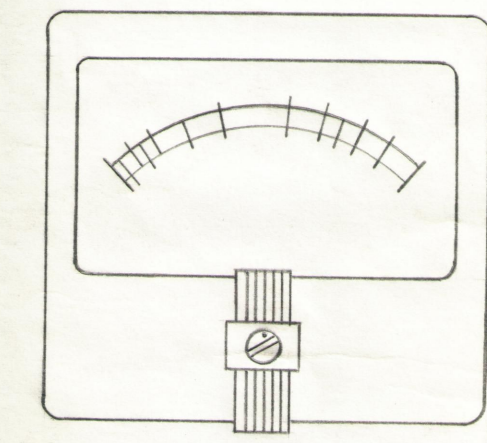
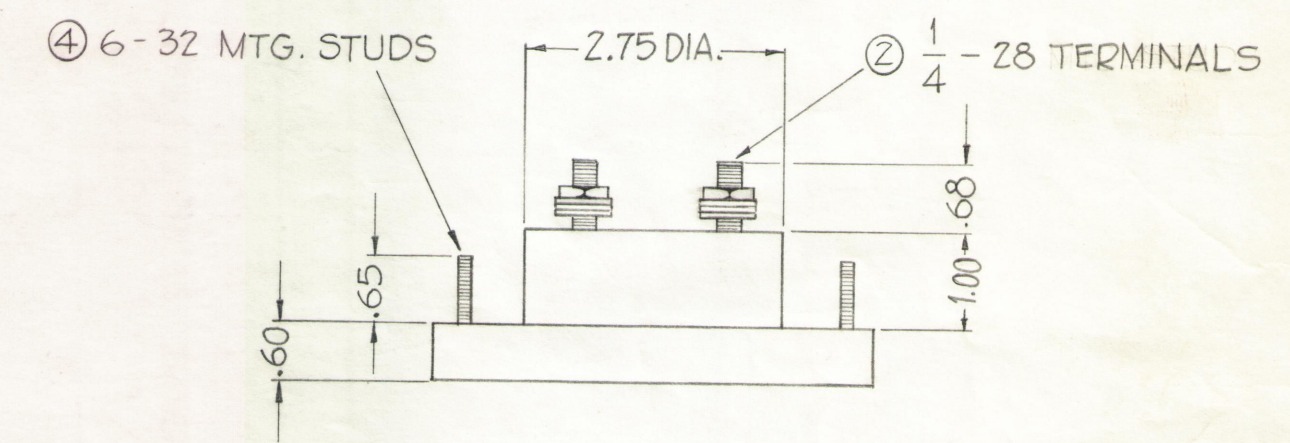
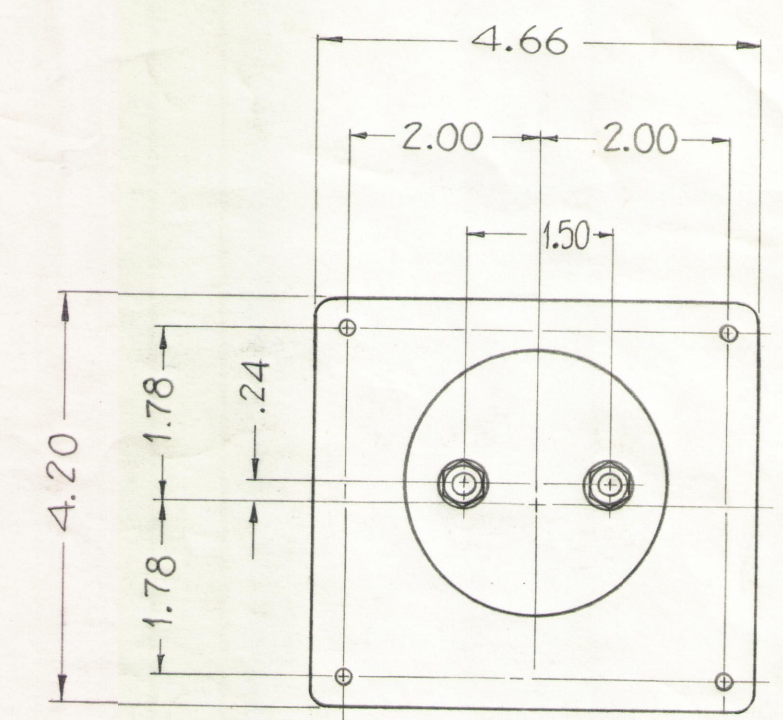
NUMERALS - **1.2, 1.4, 1.5, 1.7, 2, 3, 4**

LETTERS - **CAL, SWR**



SCALE = 2X

- NOTES -
- CASE - STANDARD COMMERCIAL RECTANGULAR 4 1/2"
 - FINISH - GLOSSY BLACK
 - MOVEMENT - 0-100 MICROAMPS
 - APPROXIMATE RESISTANCE - 2000 Ω
 - POINTER - SPADE TYPE
 - HARDWARE - ② FLAT WASHERS, ② 1/4" - 28 HEXAGON NUTS FOR TERMINALS, ④ LOCK-WASHERS, ④ 6-32 HEXAGON NUTS FOR MOUNTING, SUPPLIED BY MANUFACTURER.
 - DESIGNED FOR USE WITH/THRULINE DIRECTIONAL WATTMETER TMC # DC-101-2



FOR ALTERNATE METHOD OF PURCHASE AND ASSEMBLY SEE TMC SPEC. S-467

MAJOR CALIBRATION POINTS FOR THE FOLLOWING ARE RED.

1.2, 1.4, 1.5, 1.7, 2, 4

MAJOR CALIBRATION POINTS FOR THE FOLLOWING ARE BLACK.

CAL, 3

ALL OTHER NUMERALS, LETTERS, MAJOR AND MINOR CALIBRATION POINTS OTHER THAN NAMED ABOVE ARE TO BE IN BLACK.



INSERT TMC INSIGNIA (NP-117) IMMEDIATELY BELOW WORD 'SWR' CENTERED TO BOTTOM. IN BLACK.

| | | | | | | | |
|-----|------|---|--------|---------|--------|---------|-------------|
| SYM | ZONE | DESCRIPTION | DATE | CH. NO. | DRAFTS | CHECKER | ENG. APP. |
| A | F1 | 1/4-28 Terminals was 1/4-28 MTG. STUDS. | 4-3-61 | 4538 | JDM | JCB | [Signature] |

UNLESS OTHERWISE SPECIFIED:
DIMENSIONS ARE IN INCHES
TOLERANCES ON
FRACTIONS ± 1/64
DECIMALS ± .005
ANGLES ± 1/2°

SCALE
MAXIMUM ALLOWABLE TOLERANCES HAVE BEEN DETERMINED AND ANY DEVIATIONS WILL BE CAUSE FOR REJECTION. REMOVE ALL BURRS & SHARP EDGES

| | | | | |
|---------------|-------|---------|------------|----------|
| REQ. PER UNIT | MODEL | SECTION | ASS'Y. NO. | DATE |
| 1 | ACU | | DC-101-2 | 10-28-60 |

| REQ. ITEM | PART NO. | DESCRIPTION | SYMBOL |
|--------------------|----------|--|--------|
| STOCK SIZE | | THE TECHNICAL MATERIEL CORP. MAMARONECK, NEW YORK | |
| MATERIAL | | METER, SWR KILOWATTS | |
| TYPE & TEMPER | | J.C. Biele [Signature] | |
| HEAT TREAT. SPEC. | | DRAWN [Signature] CHECKED [Signature] FINAL APPROVAL [Signature] | |
| FINISH & SPEC. NO. | | MR-145 A | |
| ELEC. DES. APP. | | MECH. DES. APP. | |
| SHEET | | OF | |