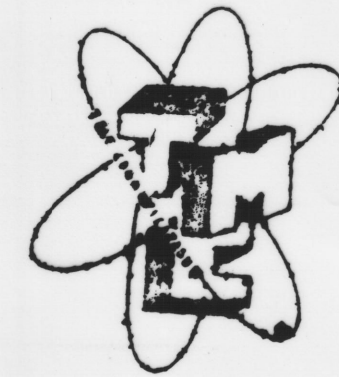
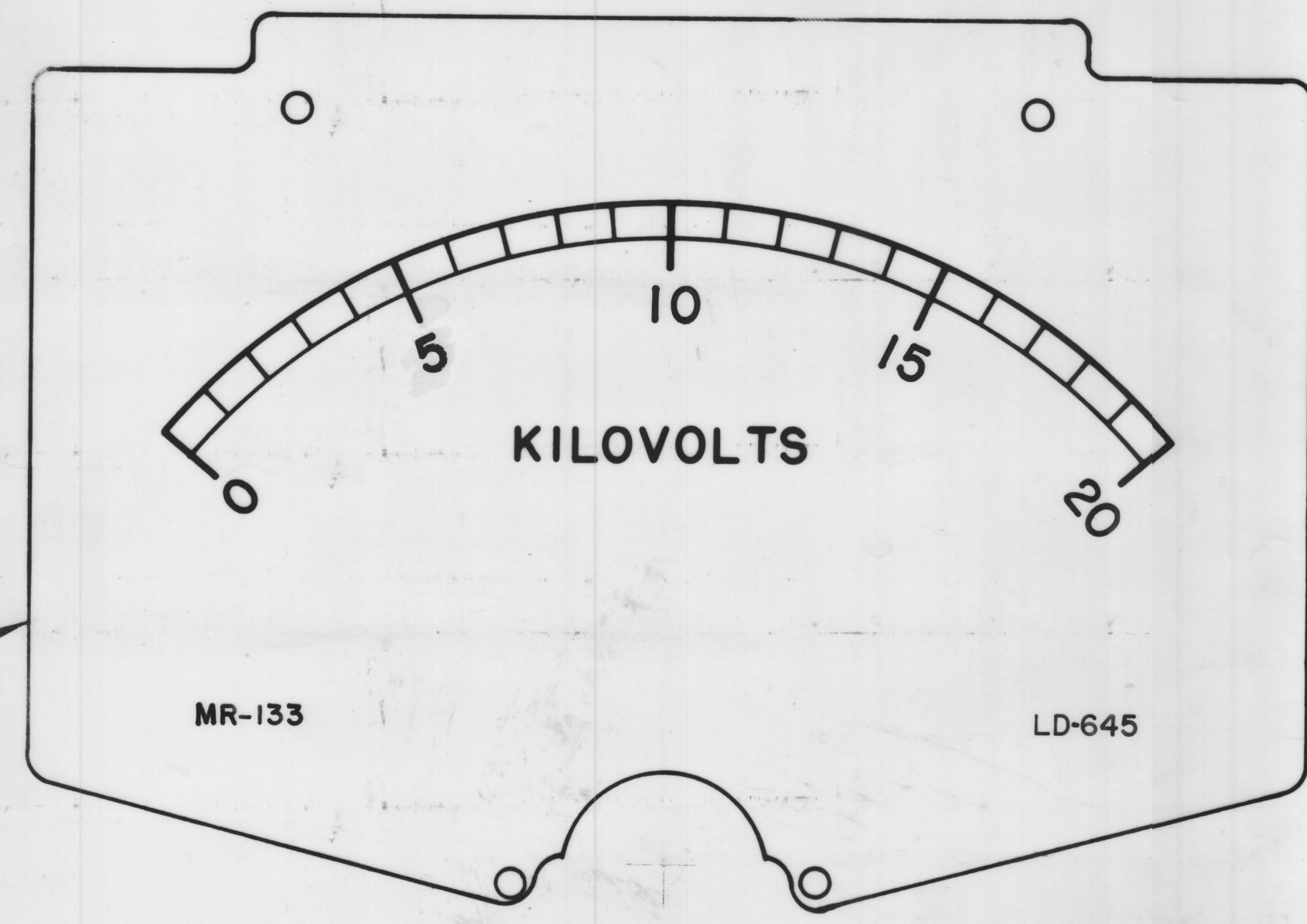
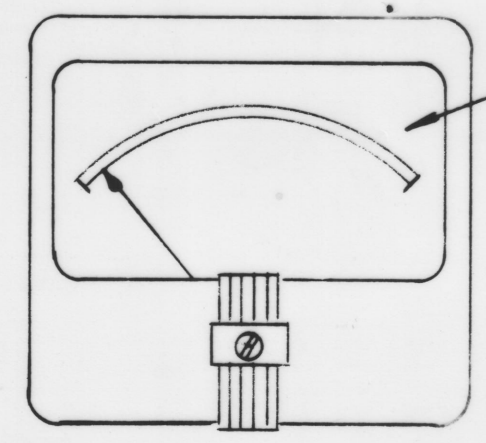
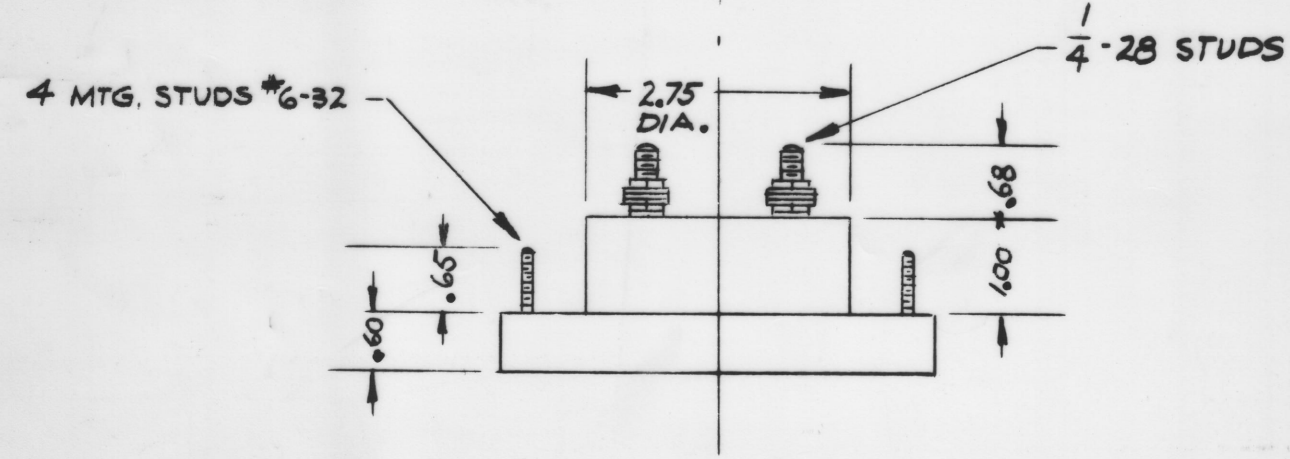
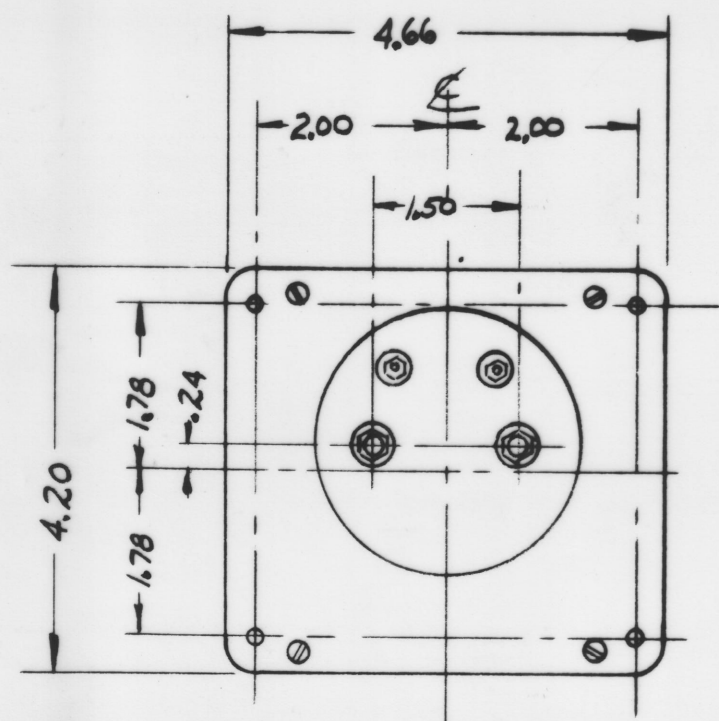


IF IT IS FOUND DESIRABLE TO CHANGE ANY TOLERANCE OR OTHER DETAIL SPECIFIED ON THIS DRAWING NOTIFY THE PURCHASER PROMPTLY.

MAXIMUM ALLOWABLE TOLERANCES HAVE BEEN DETERMINED AND DEVIATIONS WILL BE CAUSE FOR REJECTION. REMOVE ALL BURRS AND SHARP EDGES



"A"
 INSERT TMC INSIGNIA
 IMMEDIATELY BELOW WORD
 "KILOVOLTS" CENTERED TO
 BOTTOM



SCALE 2X

MR-133

For Alternate Method of
 Purchase & Ass'y See TMC
 Spec. S-467.

- NOTES:**
- CASE - STANDARD COMMERCIAL RECTANGULAR 4 1/2.
 - FINISH - GLOSSY BLACK
 - MOVEMENT - 0-1 MILLI-AMPS
 - APPROX. RESISTANCE - 46 OHMS
 - POINTER - SPADE TYPE
 - HARDWARE - TWO FLAT WASHERS AND TWO 1/4-28 HEX NUTS FOR TERMINALS. FOUR LOCKWASHERS AND FOUR 6-32 HEX NUTS FOR MOUNTING SUPPLIED BY MFG.

NOTICE TO PERSONS RECEIVING THIS DRAWING

THE TECHNICAL MATERIEL CORPORATION claims proprietary right in the material disclosed hereon. This drawing is issued in confidence for engineering information only and may not be reproduced or used to manufacture anything shown hereon without permission from THE TECHNICAL MATERIEL CORPORATION to the user. This drawing is loaned for mutual assistance and is subject to recall at any time.

Property of:
 THE TECHNICAL MATERIEL CORPORATION
 MAMARONECK, NEW YORK

REQ. ITEM	PART NO.	DESCRIPTION	SYMBOL
		THE TECHNICAL MATERIEL CORP. MAMARONECK, NEW YORK	
STOCK SIZE		VOLTMETER, DC	
MATERIAL	WEIGHT PER PC.	PLATE VOLTS	
TYPE & TEMPER	AP. Man	EB	cm
HEAT TREAT. SPEC.	ADe	2VP	
FINISH & SPEC. NO.	CHECKED	FINAL APPROVAL	
		MR-133	

ISSUE ITEM	CHANGED FROM	DATE	CN. NO.	DRAFTS	CHECKER	ENG. APP.
TOLERANCES		SCALE: 5-401-44(17-29)				
ALL OTHERS	DEC. DIM. ± FRAC. DIM. ± ANGULAR DIM. ±	DRILL, PUNCH, COMMERCIAL STOCK SIZES AND MANUFACTURERS TOLERANCES ARE NOT INCLUDED.				

REQ PER UNIT	MODEL	PROJECT NO.	ASS'Y. NO.	DATE
1	GPT-40K			11-12-59
USED ON				