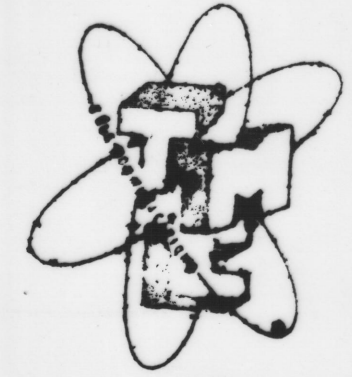


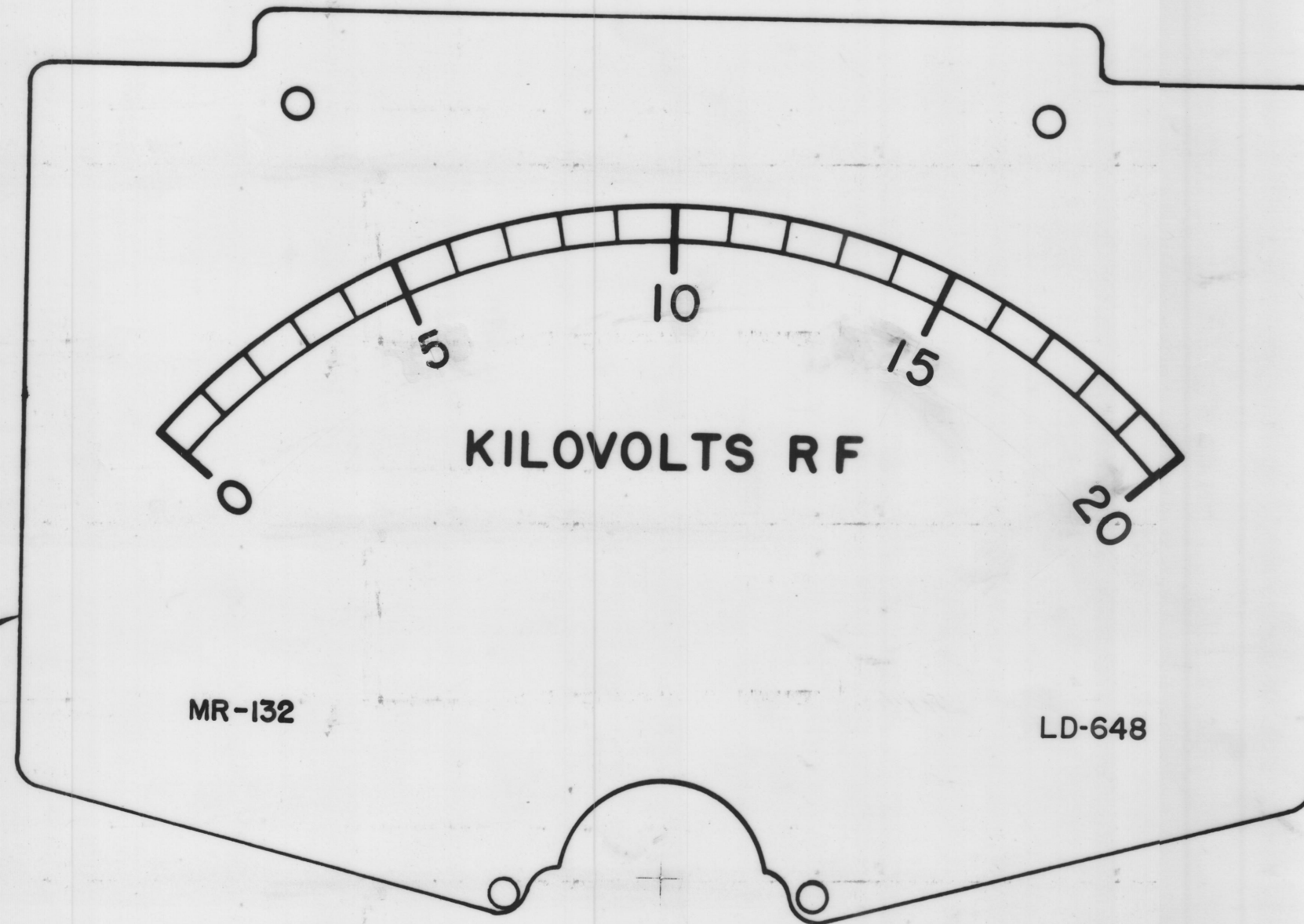
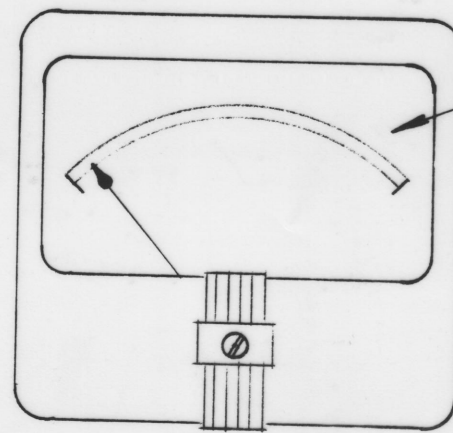
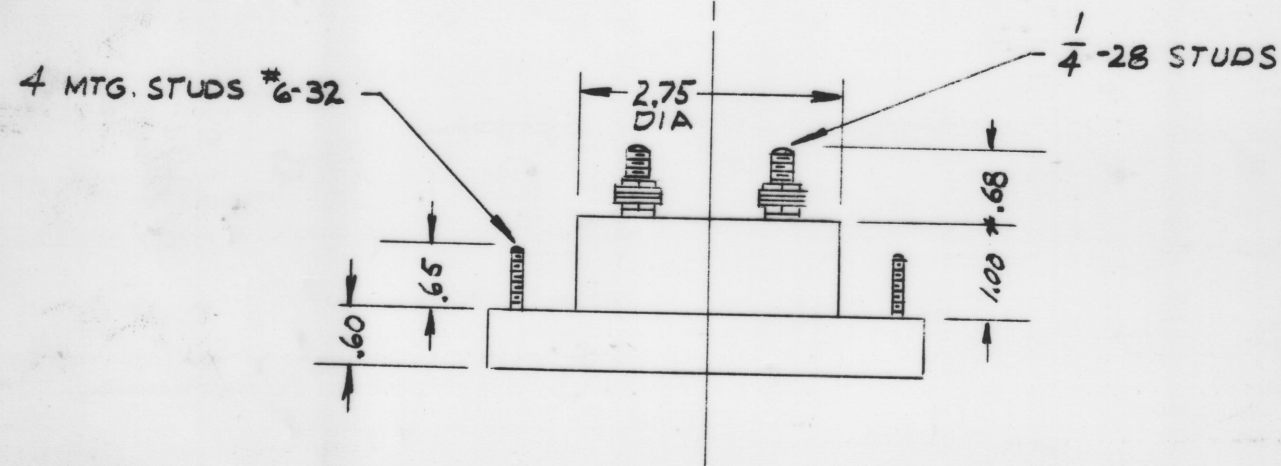
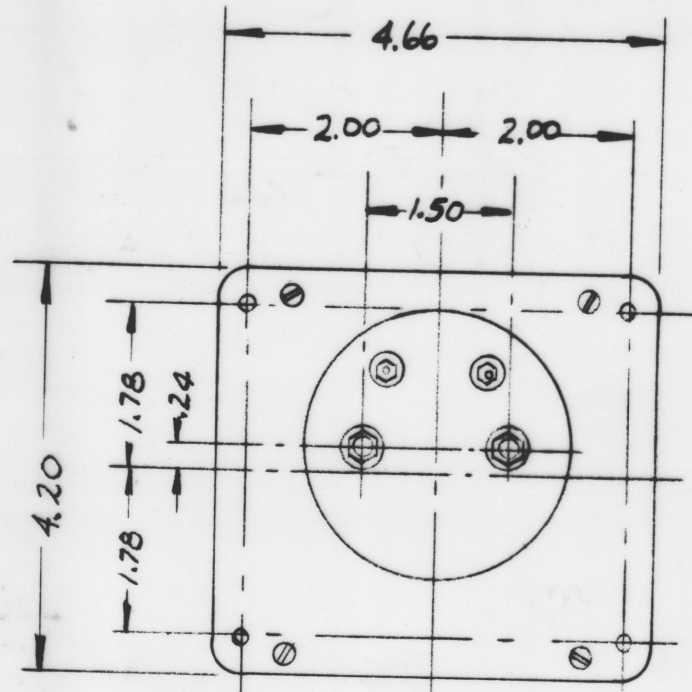
IF IT IS FOUND DESIRABLE TO CHANGE ANY TOLERANCE OR OTHER DETAIL SPECIFIED ON THIS DRAWING NOTIFY THE PURCHASER PROMPTLY.

MAXIMUM ALLOWABLE TOLERANCES HAVE BEEN DETERMINED AND DEVIATIONS WILL BE CAUSE FOR REJECTION. REMOVE ALL BURRS AND SHARP EDGES



"A"

INSERT TMC INSIGNIA IMMEDIATELY BELOW WORD "KILOVOLTS RF" CENTERED TO BOTTOM.



SCALE 2X

MR-132 A

NOTES

CASE - STANDARD COMMERCIAL RECTANGULAR 4 1/2.

FINISH - GLOSSY BLACK

MOVEMENT - 0-200 MICRO-AMPS

APPROX. RESISTANCE - 1000 OHMS

POINTER - SPADE TYPE

HARDWARE - TWO FLAT WASHERS AND TWO 1/4-28 HEX NUTS FOR TERMINALS, FOUR LOCKWASHERS AND FOUR 6-32 HEX NUTS FOR MOUNTING SUPPLIED BY MFG.

For Alternate Method of Purchase & Assy see TMC Spec. S-467.

OBSOLETE
REPLACED BY MR-120
5/12/60

NOTICE TO PERSONS RECEIVING THIS DRAWING

THE TECHNICAL MATERIEL CORPORATION claims proprietary right in the material disclosed hereon. This drawing is issued in confidence for engineering information only and may not be reproduced or used to manufacture anything shown hereon without permission from THE TECHNICAL MATERIEL CORPORATION to the user. This drawing is loaned for mutual assistance and is subject to recall at any time.

Property of:
THE TECHNICAL MATERIEL CORPORATION
MAMARONECK, NEW YORK

A	1	RECALIBRATION	4-12-60	2136	RL	JL	BB	
ISSUE	ITEM	CHANGED FROM	DATE	CN. NO.	DRAFTS	CHECKER	ENG. APP.	
TOLERANCES								
ALL OTHERS	DEC. DIM. ± .015	FRAC. DIM. ± 1/64	ANGULAR DIM. ±	SCALE: 2:1 (1/2" = 1")				DRILL, PUNCH, COMMERCIAL STOCK SIZES AND MANUFACTURERS TOLERANCES ARE NOT INCLUDED.

1	GPT-40K	PROJECT NO.	ASS'Y. NO.	DATE
REQ PER UNIT	MODEL	PROJECT NO.	ASS'Y. NO.	DATE
USED ON				

REQ. ITEM	PART NO.	DESCRIPTION	SYMBOL
THE TECHNICAL MATERIEL CORP. MAMARONECK, NEW YORK			
STOCK SIZE			
MATERIAL WEIGHT PER PC.			
VOLTMETER, RF PLATE RF			
TYPE & TEMPER			
DRAWN		ELEC. DES. APP.	MECH. DES. APP.
CHECKED		FINAL APPROVAL	
HEAT TREAT. SPEC.			
FINISH & SPEC. NO.			

MR-132 A