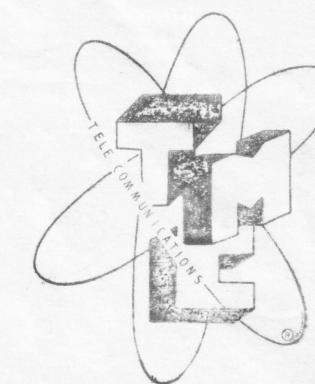


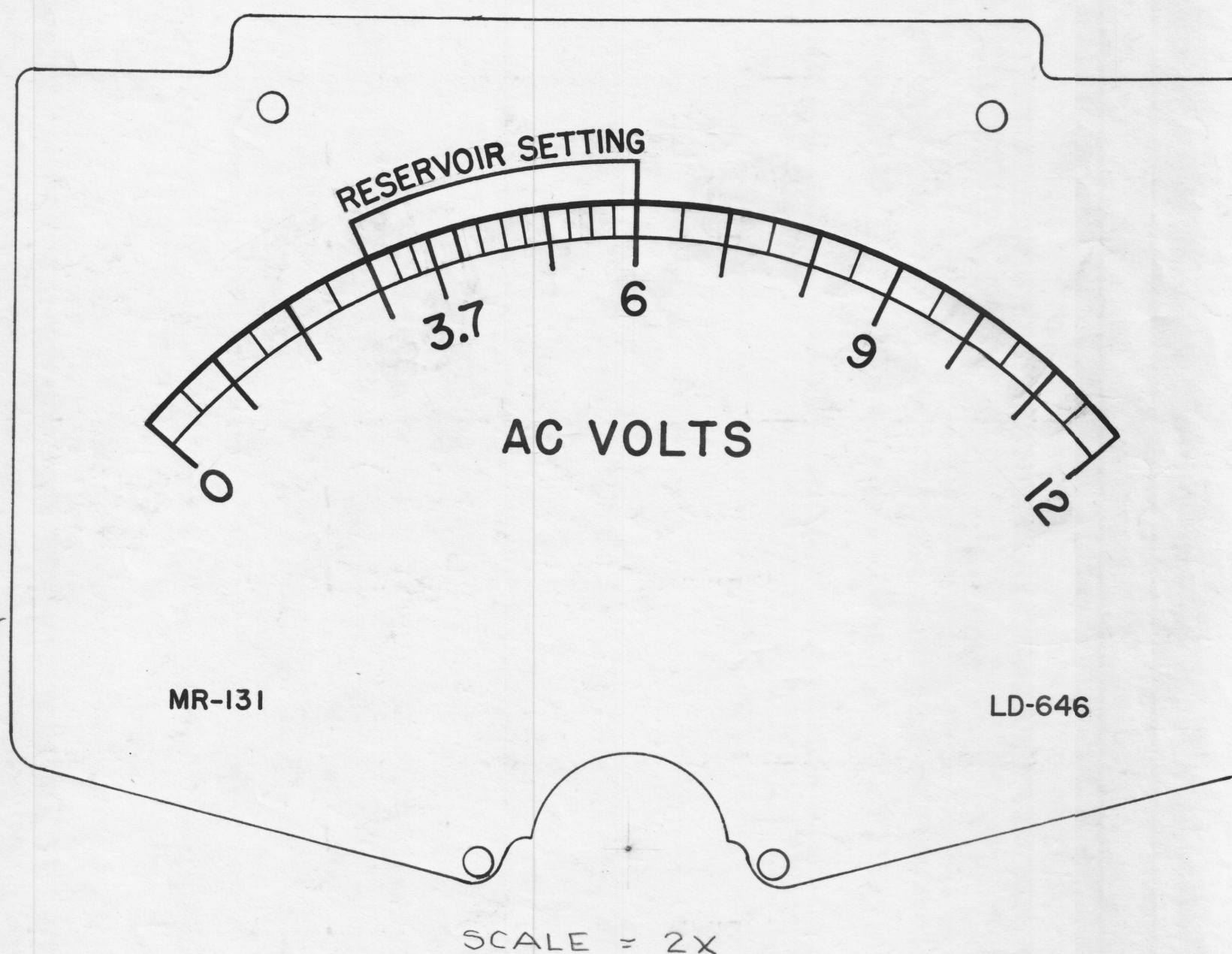
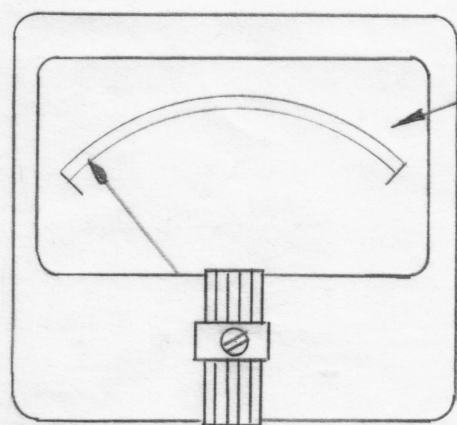
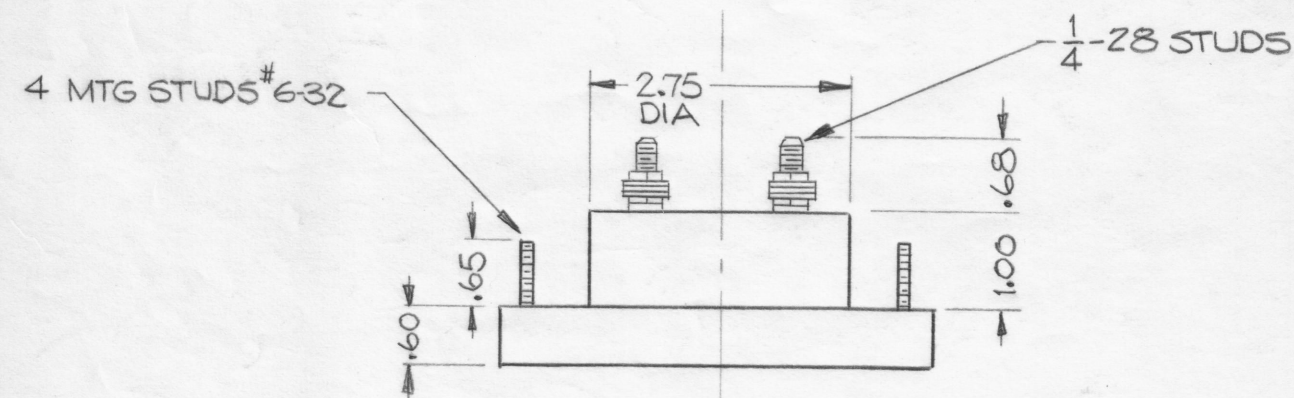
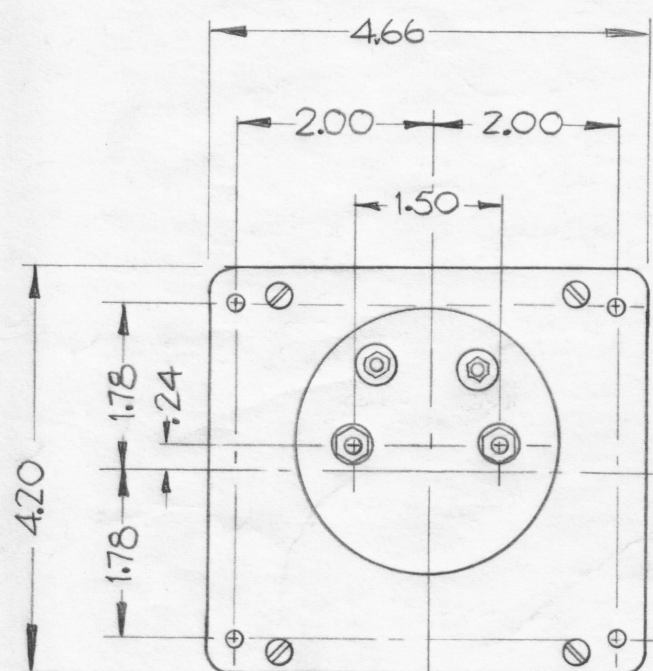
IF IT IS FOUND DESIRABLE TO CHANGE ANY TOLERANCE OR OTHER DETAIL SPECIFIED ON THIS DRAWING NOTIFY THE PURCHASER PROMPTLY.

MAXIMUM ALLOWABLE TOLERANCES HAVE BEEN DETERMINED AND DEVIATIONS WILL BE CAUSE FOR REJECTION. REMOVE ALL BURRS AND SHARP EDGES.



REF. NP-117

INSERT TMC INSIGNIA IMMEDIATELY BELOW WORD "AC VOLTS" CENTERED TO BOTTOM



MR-131 B

**NOTICE TO PERSONS RECEIVING THIS DRAWING**

THE TECHNICAL MATERIEL CORPORATION claims proprietary right in the material disclosed hereon. This drawing is issued in confidence for engineering information only and may not be reproduced or used to manufacture anything shown hereon without permission from THE TECHNICAL MATERIEL CORPORATION to the user. This drawing is loaned for mutual assistance and is subject to recall at any time.

Property of:  
THE TECHNICAL MATERIEL CORPORATION  
MAMARONECK, NEW YORK

**NOTES**

CASE-STANDARD COMMERCIAL 4 1/2 RECTANGULAR.

FINISH- GLOSSY BLACK

MOVEMENT - 0-10 V.A.C.

APPROX. RESISTANCE - 1000 OHMS

POINTER- SPADE TYPE

HARDWARE - TWO FLAT WASHERS AND TWO 1/4-28 HEX NUTS FOR TERMINALS.

FOUR LOCKWASHERS AND FOUR 6-32 HEX NUTS FOR MOUNTING SUPPLIED BY MFG.

For Alternate Method of Purchase & Assy see TMC Spec. S-467

B	1	On Notes, Movement was 0-12	12/2/60	3638	RU	JCB	JCB
A	1	0-3.7-6-9-12 was 0-2.5-5-7.5-10	5/3/60	2227	J.C.B.	JCB	JCB
ISSUE	ITEM	CHANGED FROM	DATE	CH. NO.	DRAFTS	CHECKER	ENG. APP.

TOLERANCES		SCALE:
ALL	DEC. DIM. ±	DRILL, PUNCH, COMMERCIAL STOCK
OTHERS	FRAC. DIM. ±	SIZES AND MANUFACTURERS
	ANGULAR DIM. ±	TOLERANCES ARE NOT INCLUDED.

1	GPT-40K	PROJECT NO.	ASSY. NO.	11-20-59	DATE
REQ. PER UNIT	MODEL	PROJECT NO.	ASSY. NO.	DATE	

REQ. ITEM	PART NO.	DESCRIPTION	SYMBOL
		THE TECHNICAL MATERIEL CORP. MAMARONECK, NEW YORK	
		VOLTMETER, AC	
		RECTIFIER TYPE	
		DRAWN: JCB	ELEC. DES. APP.:
		CHECKED: JCB	MECH. DES. APP.:
		HEAT TREAT. SPEC.	FINAL APPROVAL:
			MR-131 B