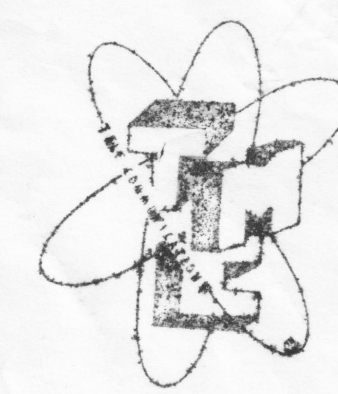
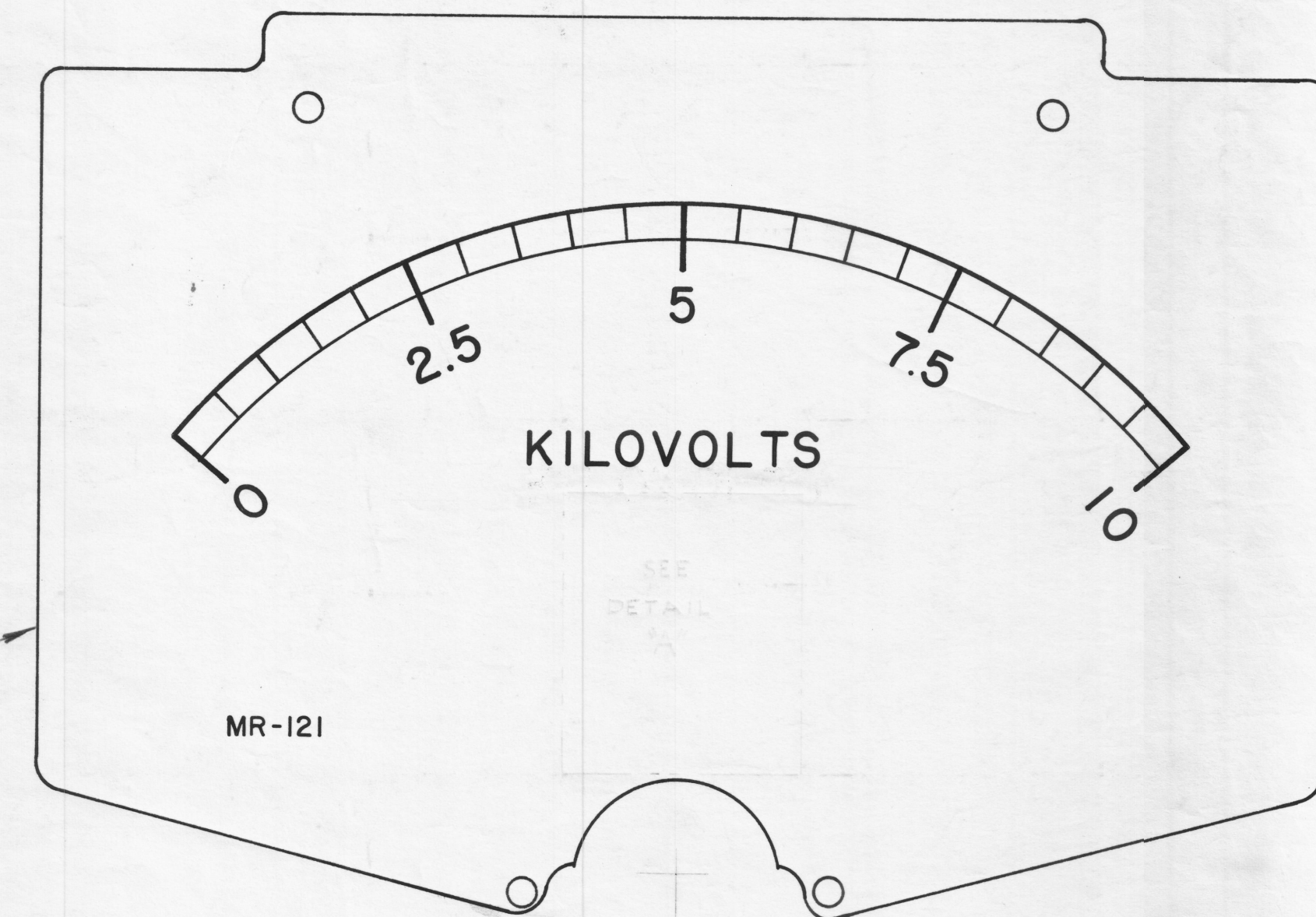
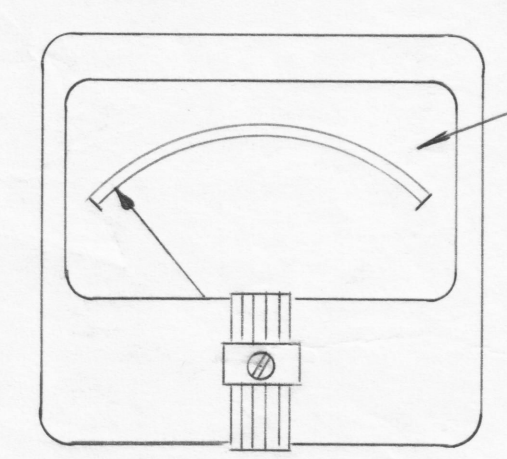
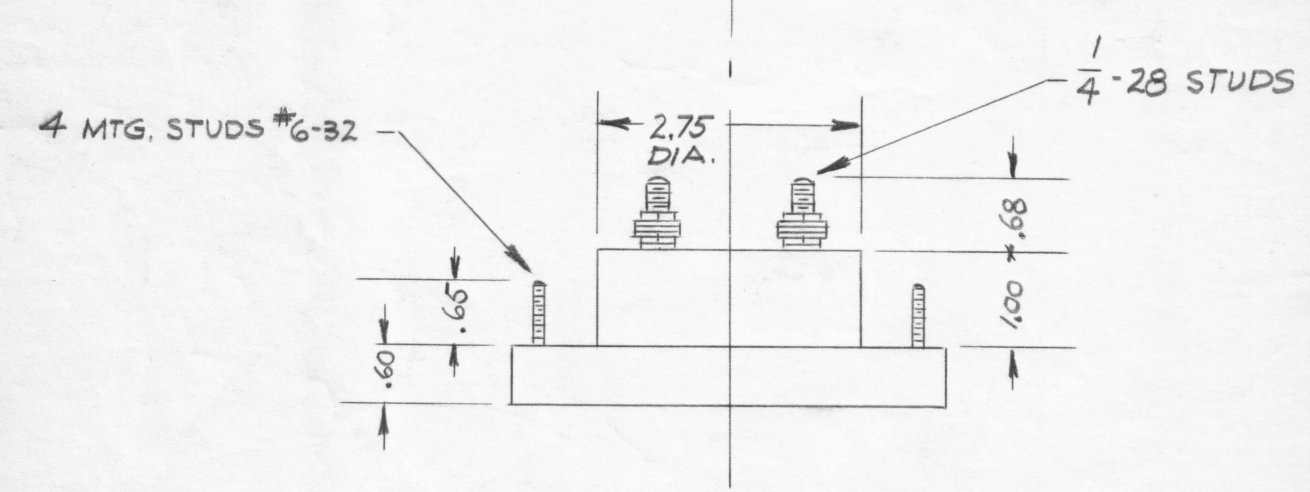
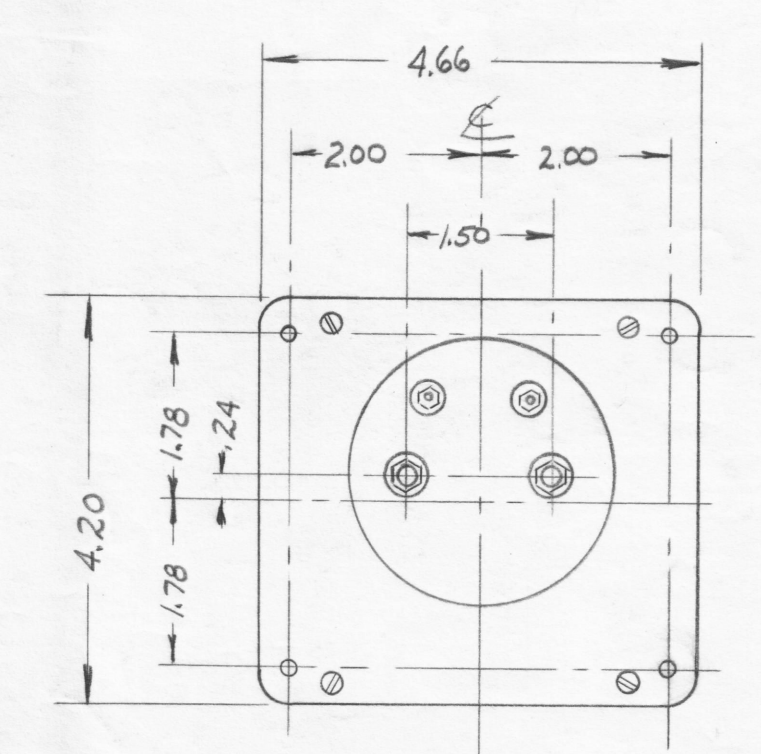


IF IT IS FOUND DESIRABLE TO CHANGE ANY TOLERANCE OR OTHER DETAIL SPECIFIED ON THIS DRAWING NOTIFY THE PURCHASER PROMPTLY.

MAXIMUM ALLOWABLE TOLERANCES HAVE BEEN DETERMINED AND DEVIATIONS WILL BE CAUSE FOR REJECTION. REMOVE ALL BURRS AND SHARP EDGES



"A"  
 INSERT TMC INSIGNIA  
 IMMEDIATELY BELOW WORD  
 "KILOVOLTS" CENTERED TO  
 BOTTOM



SCALE 2X

MR-121

**NOTES:**  
 CASE - STANDARD COMMERCIAL RECTANGULAR 4 1/2" CASE MODEL 29  
 FINISH - GLOSSY BLACK  
 MOVEMENT - 0-1 MILLI-AMPS  
 APPROX. RESISTANCE - 46 OHMS  
 POINTER - SPADE TYPE  
 HARDWARE - TWO FLAT WASHERS AND TWO 1/4-28 HEX NUTS FOR TERMINALS.  
 FOUR LOCKWASHERS AND FOUR 6-32 HEX NUTS FOR MOUNTING SUPPLIED BY MFG.

REF SIMPSON CAT. NO 17 MODEL 29

ISSUE	ITEM	CHANGED FROM	DATE	CN. NO.	DRAFTS	CHECKER	ENG. APP.
TOLERANCES							
SCALE: S-401-44(17-29)				DRILL, PUNCH, COMMERCIAL STOCK SIZES AND MANUFACTURERS TOLERANCES ARE NOT INCLUDED.			
ALL OTHERS	DEC. DIM. ±	FRAC. DIM. ±	ANGULAR DIM. ±				

1	GPT-10K	PROJECT NO.	ASSY. NO.	10-31-58
REQ PER UNIT	MODEL	PROJECT NO.	ASSY. NO.	DATE
USED ON				

REQ. ITEM	PART NO.	DESCRIPTION	SYMBOL
THE TECHNICAL MATERIEL CORP. MAMARONECK, NEW YORK			
VOLTMETER, KLO, DC FINAL PLATE			
MATERIAL		WEIGHT PER PC.	
TYPE & TEMPER		DRAWN	MECH. DES. APP.
HEAT TREAT. SPEC.		CHECKED	FINAL APPROVAL
FINISH & SPEC. NO.		MR-121	