

IF IT IS FOUND DESIRABLE TO CHANGE ANY TOLERANCE OR OTHER DETAIL SPECIFIED ON THIS DRAWING NOTIFY THE PURCHASER PROMPTLY.

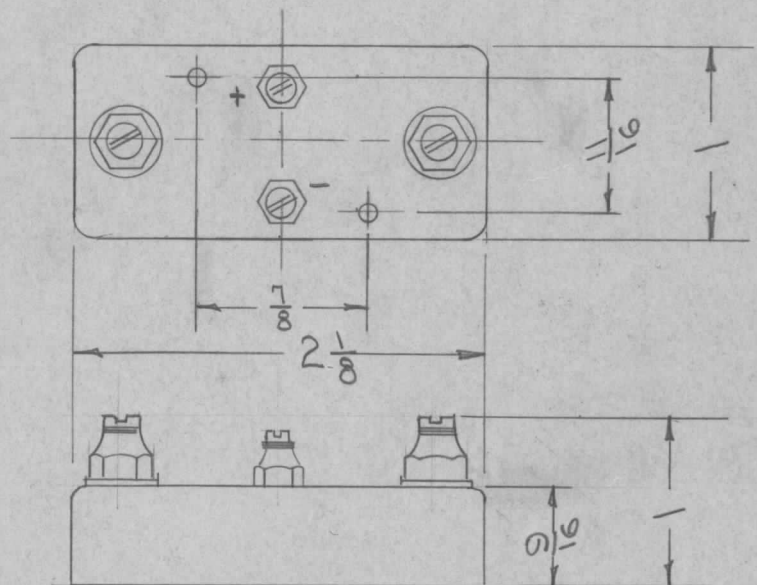
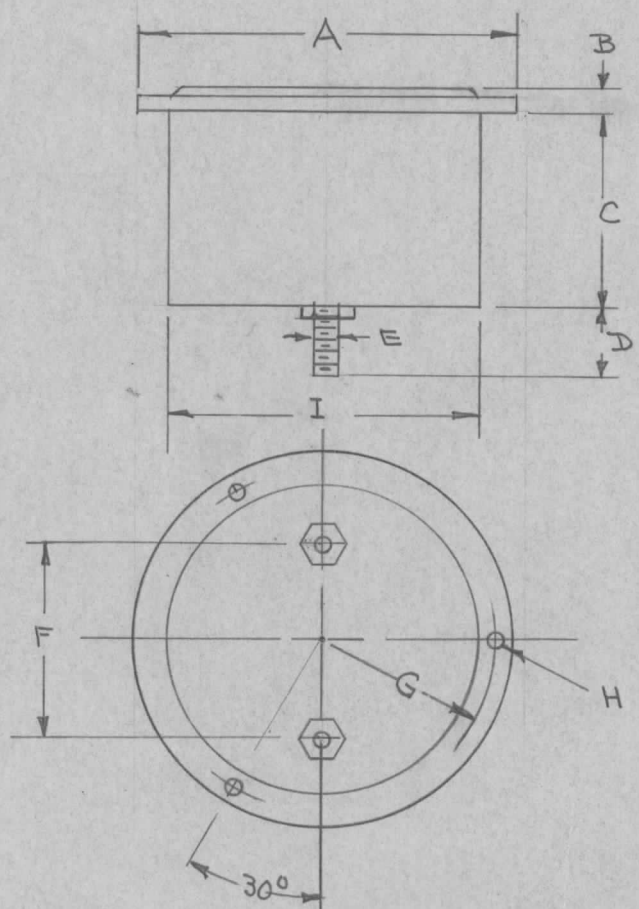
MR-105/A

MAXIMUM ALLOWABLE TOLERANCES HAVE BEEN DETERMINED AND DEVIATIONS WILL BE CAUSE FOR REJECTION. REMOVE ALL BURRS AND SHARP EDGES

USED ON

| MODEL | PROJECT NO. | ASS'Y. NO. | DATE |
|-------|-------------|------------|---------|
| TAC-1 | 132 | | 7-29-53 |

| TMC NO | SIMPSON MODEL NO. | A | B | C | D | E | F | G | H | I | RANGE |
|----------|-------------------|------|-----|------|-----|-----|------|------|-----|------|-------|
| MR-103-1 | 35 | 3.50 | .26 | 1.31 | .68 | .25 | 1.50 | 1.58 | .16 | 2.75 | 0-3A |



3 1/2 ROUND BAKELITE
REF: SIMPSON MODEL 35 RANGE 0-3 A.

| REQ. | ITEM | PART NO. | DESCRIPTION | SYMBOL |
|------|------|--------------------|--|---------------------------------|
| | | | THE TECHNICAL MATERIEL CORP. MAMARONECK. NEW YORK | |
| | | STOCK SIZE | METER R.F | |
| | | MATERIAL | W/EXTERNAL THERMOCOUPLE | |
| | | WEIGHT PER PC. | DATE 7-29-53 | |
| | | TYPE & TEMPER | DRAWN | ELEC. DES. APP. MECH. DES. APP. |
| | | HEAT TREAT. SPEC. | CHECKED | FINAL APPROVAL |
| | | FINISH & SPEC. NO. | | MR-105/A |

| A | 1 | DWG. NO. WASMP-103 | 10/13 | 1 | WSP | WSP |
|------------|---|--------------------|---|---------|----------------|-----------|
| ISSUE | ITEM | CHANGED FROM | DATE | CN. NO. | DRAFTS CHECKER | ENG. APP. |
| TOLERANCES | | | SCALE | | | |
| ALL OTHERS | DEC. DIM. ± FRAC. DIM. ± ANGULAR DIM. ± | | DRILL, PUNCH, COMMERCIAL STOCK SIZES AND MANUFACTURERS TOLERANCES ARE NOT INCLUDED. | | | |