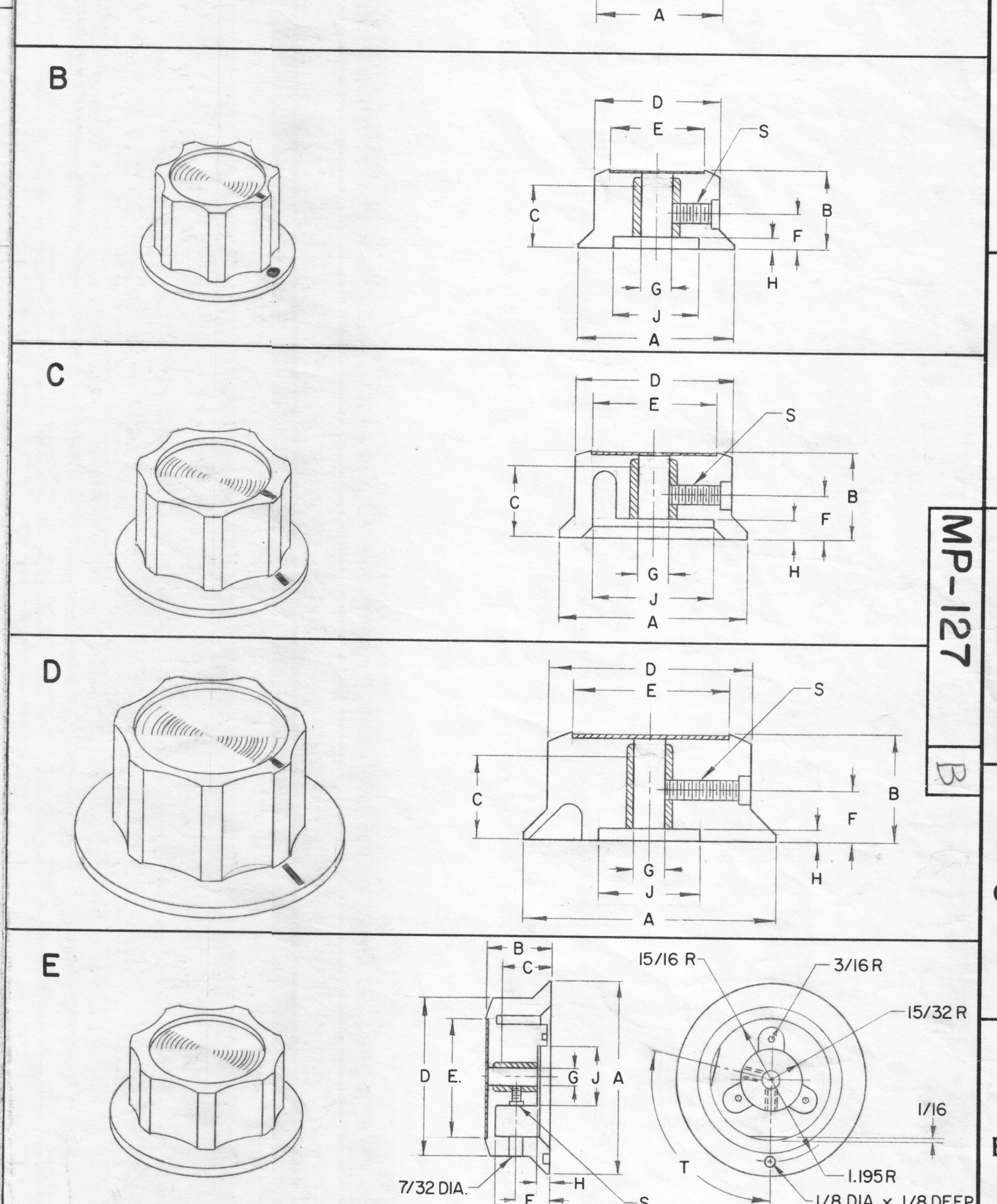


TMC BASIC NO.	MFR BASIC KNOB NO.	MFR BASIC INSERT NO.	KNOB DIMENSIONS										SET SCREW ANGLE SEE NOTE 4 "T"	PIC-TORIAL	DEPRESSED INDICATOR LINE AVAIL.	REMARKS
			A	B	C	D	E	F	G	H	J	S				
MP-127-1	S-1645-3	40901	3/4	13/32	3/8	5/8	7/16	7/32	1/4	1/16	9/16	6-32	103°	A	YES	
MP-127-2	S-1645-5	40901	3/4	13/32	3/8	5/8	7/16	7/32	1/8	1/16	9/16	6-32	103°	A	YES	
MP-127-3	S-1647-3	40902	1	9/16	1/2	13/16	19/32	9/32	1/4	3/32	11/16	8-32	103°	A	YES	
MP-127-4	S-1647-4	40902	1	9/16	15/32	13/16	19/32	9/32	3/16	3/32	11/16	8-32	103°	A	YES	
MP-127-5	S-1648-3	40903	1 1/4	5/8	1/2	1	3/4	9/32	1/4	3/32	11/16	8-32	103°	B	YES	
MP-127-6	S-1642-3	40905	1 1/2	11/16	9/16	1 1/4	1	11/32	1/4	5/32	31/32	8-32	103°	C	NO	
MP-127-7	S-1653-3	40905	1 1/2	11/16	9/16	1 1/4	1	11/32	1/4	5/32	31/32	8-32	103°	C	YES	
MP-127-8	S-1649-3	40906	2	27/32	21/32	1 5/8	1 1/4	13/32	1/4	3/32	13/16	8-32	103°	D	YES	
MP-127-9	S-1654-3	40906	2	27/32	21/32	1 5/8	1 1/4	13/32	1/4	3/32	13/16	8-32	103°	D	NO	
MP-127-10	S-1671-70	40907	3	1 1/32	13/16	2 1/2	1 7/8	9/16	1/4	3/16	15/16	10-32	103°	E	NO	
MP-127-11	S-1647-3	NOT USED	1	9/16	THRU	13/16	19/32	9/32	1/4	3/32	11/16	8-32	103°	A	YES	MP127-3 MODIFIED WITHOUT INSERT

REVISIONS									
ZONE	SYM	DESCRIPTION	DATE	E.M.N. NO.	DRAFT	CHKD	APPD		
-	A	UPDATED TO CONFORM WITH MFR'S SPEC	11/18/63	10617					
	B	ON B/M; IT. MP-127-11 & REMARKS COL. ADD; PICT.(A) NOTE ADD; TMC P/N EX:(MP-127-6,9,10 ONLY) WAS (MP-127-6,9 ONLY)	12-29-64	13187					



PURCHASING INFORMATION ONLY

S1645-3 L - 40901 - BB - AHSS RED

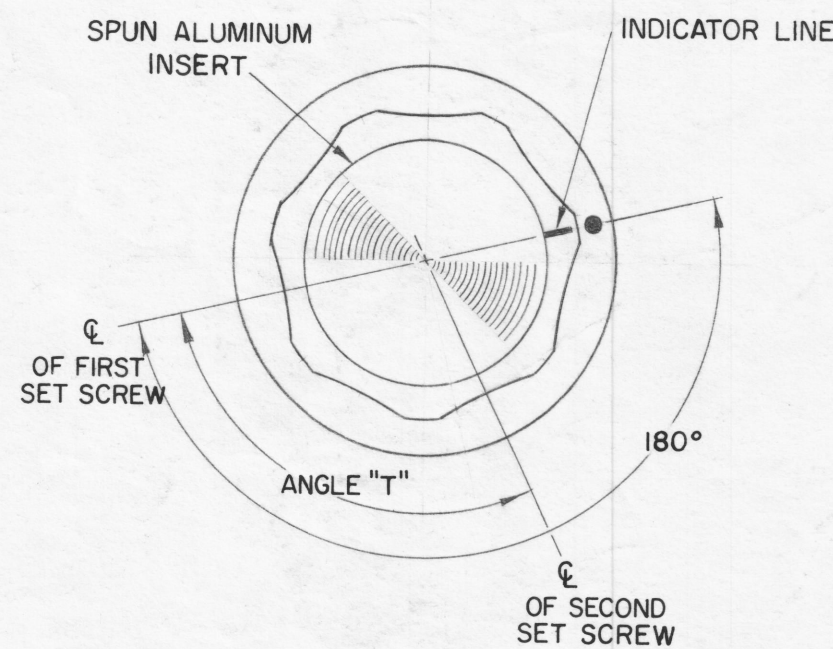
- Basic Knob No. See Chart
- L=With white filled line No letter-Unfilled line (on styles S-642 & S-654 there are no lines avail)
- Insert No.
- With two Type Allen Head Set screws (always part of no.) See note 3
- If other than black knob, specify color. See Knob Color Chart

TMC PART NO.

MP-127-1

- BASIC TMC KNOB PART NO.**
- INDICATOR LINE**
- F=With white filled depressed indicator line (or dot as applicable) See Pictorials
- U=With unfilled depressed indicator line.
- N=With no depressed ind. line. (MP-127- 6,9,10 ONLY).

KNOB COLORS	MFR. COLOR	MFR. COLOR NO.
R = Red	Durez	1898
B = Black	Union Carbide	BMG 5120
W = Brown	Durez	740
M = Maroon	Union Carbide	8052
G = Green	Plenco	706
Y = Yellow	Plenco	704
A = Gray	Plenco	716



STANDARD DRAWING

- NOTES:**
- Molded thermosetting plastic body (Phenol Resin or Malamine Phenol Resin).
 - Mounting Insert - Brass
 - Set Screws - Allen Head, Plain Steel, Cadmium Plate, two per knob supplied by manufacturer.
 - Set Screw Location - Viewing knob from the top, the first set screw is 180° from indicator line and the second set screw is CCW from the first set screw by an angle called for in the dimension chart, column "T".

REQ'D.	ITEM	PART NUMBER	DESCRIPTION	SYMBOL
LIST OF MATERIAL				
MATERIAL			THE TECHNICAL MATERIEL CORP. MAMARONECK, NEW YORK	
FINISH			TITLE KNOB, INSTRUMENT	
UNLESS OTHERWISE SPECIFIED DIMENSIONS ARE IN INCHES AND INCLUDE CHEMICALLY APPLIED OR PLATED FINISHES			DRAWN: <i>R. KOHN</i> DATE: 10-17-63 CHECKED: <i>H.L.</i> DATE: 10-18-63 ELECT. DES.: <i>R. KOHN</i> DATE: 10-18-63 MECH. DES.: <i>R. KOHN</i> DATE: 10-18-63	FINAL APPROVAL: <i>BP</i> DATE: MP-127 SHEET: B
TOLERANCES .X ± .05 .XX ± .01 .XXX ± .005			FRACTIONS ± 1/64 ANGLES ± 0° 30'	

NOTES

THE CONTENTS OF THIS DRAWING ARE THE EXCLUSIVE PROPERTY OF THE TECHNICAL MATERIEL CORP. ITS UNAUTHORIZED USE OR REPRODUCTION IN WHOLE OR IN PART IS STRICTLY FORBIDDEN.

SCALE: C 5401-155

REV. LTR. B