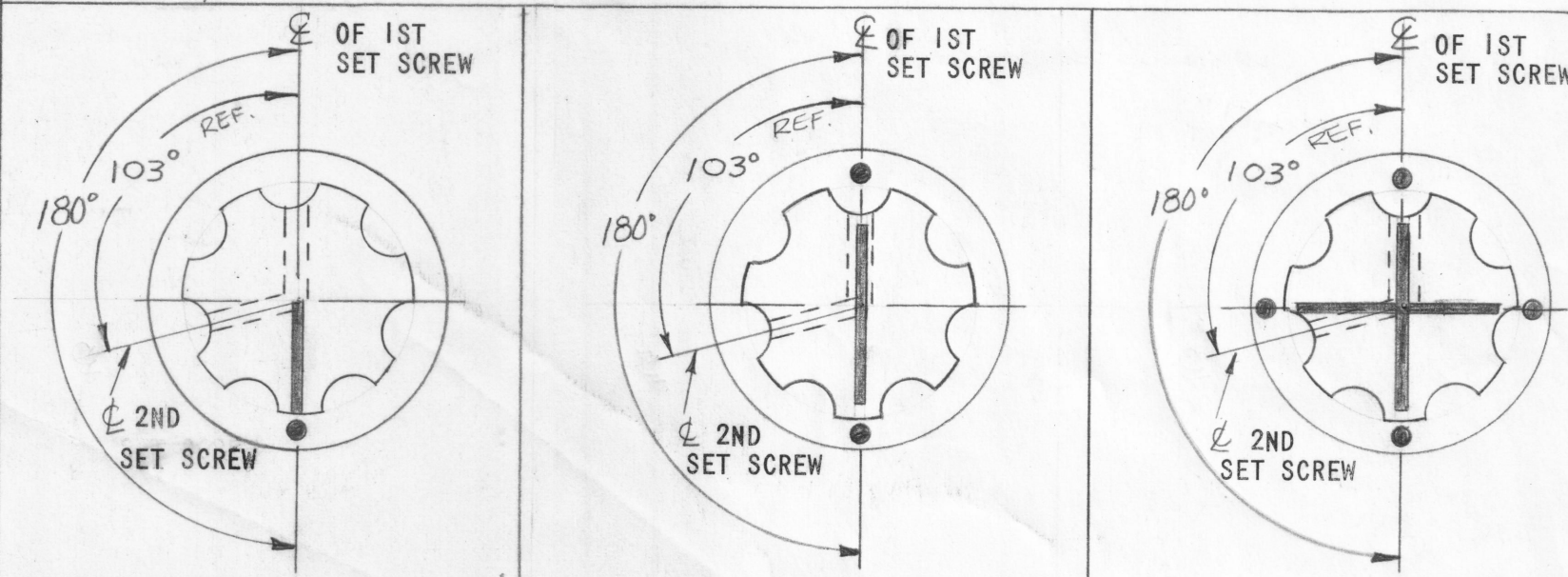


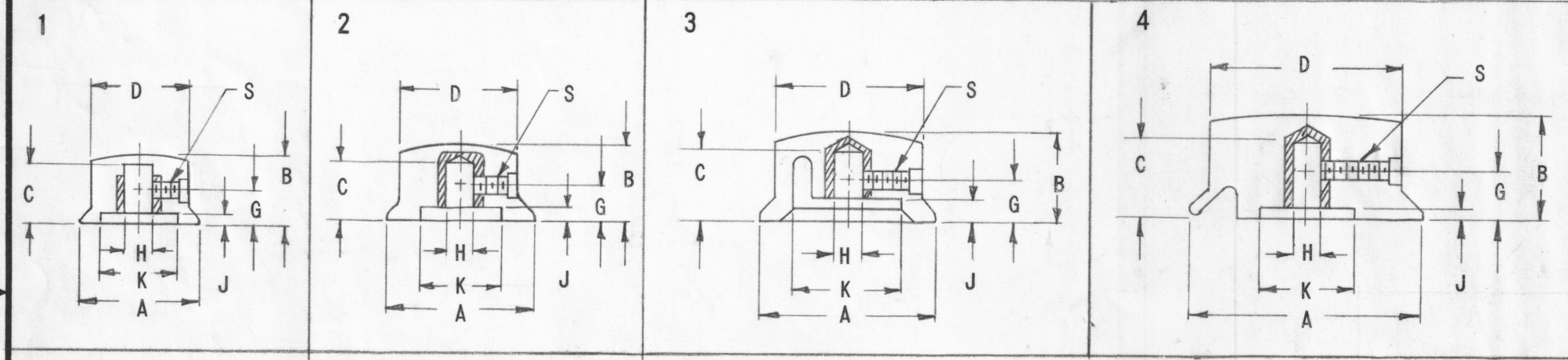
TMC P/N	MFR P/N	KNOB DIMENSIONS										SET SCREW ANGLE SEE NOTE 4 "T"	PICTORIAL	DEPRESSED INDICATOR LINE AVAIL
		A	B	C	D	G	H	J	K	S				
MP123-1	S-645-3	3/4	7/16	3/8	5/8	7/32	1/4	1/16	9/16	6-32	103°	1	YES	
-2	S-645-5	3/4	7/16	3/8	5/8	7/32	1/8	1/16	9/16	6-32	103°	1	YES	
-3	S-647-3	1	19/32	1/2	13/16	9/32	1/4	3/32	11/16	8-32	103°	1	YES	
-4	S-647-4	1	19/32	15/32	13/16	9/32	3/16	3/32	11/16	8-32	103°	1	YES	
-5	S-648-3	1-1/4	21/32	1/2	1	9/32	1/4	3/32	11/16	8-32	103°	2	YES	
-6	S-642-3	1-1/2	3/4	9/16	1-1/4	11/32	1/4	5/32	31/32	8-32	103°	3	NO	
-7	S-653-3	1-1/2	3/4	9/16	1-1/4	11/32	1/4	5/32	31/32	8-32	103°	3	YES	
-8	S-649-3	2	7/8	21/32	1-5/8	13/32	1/4	3/32	13/16	8-32	103°	4	YES	
-9	S-654-3	2	7/8	21/32	1-5/8	13/32	1/4	3/32	13/16	8-32	103°	4	NO	
-10	S-671-70	3	1-1/8	13/16	2-1/2	9/16	1/4	3/16	15/16	10/32	103°	7	NO	
-11	S-657-3	1-1/8	5/8	1/2	—	1/4	1/4	3/32	11/16	8-32	90°	5	YES	
-12	S-656-3	1	39/64	THRU	1	9/32	1/4	3/32	11/16	8-32	90°	6	YES	
-13	S-645-5	3/4	7/16	3/8	5/8	7/32	3/16	1/16	9/16	6-32	103°	1	YES	

REVISIONS						
ZONE	LTR	DESCRIPTION	DATE	E.M.N.NO	DRAFT	CHKD APPD
F		COMPLETELY REVISED AND REDRAWN	7/6/68	19006	CV	SG JDe

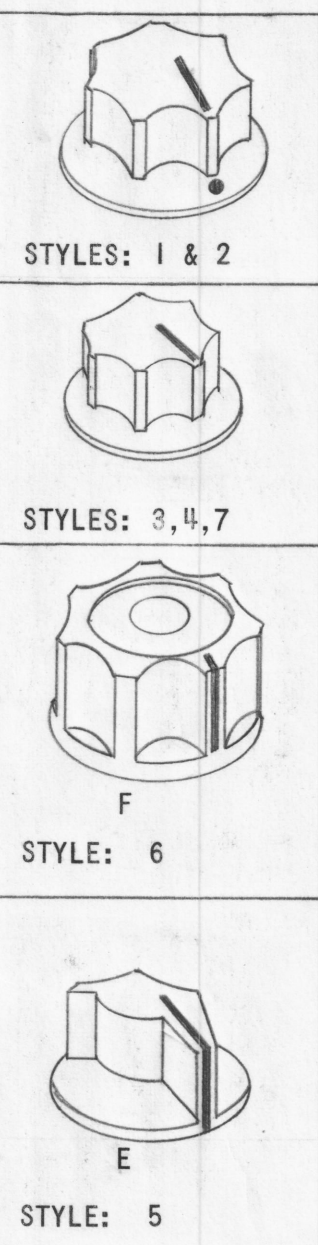
INDICATOR LINE PICTORIALS



F	WHITE FILLED, HALF INDICATOR LINE OR DOT AS APPLICABLE (SEE PICTORIALS)	S	WHITE FILLED FULL VERTICAL INDICATOR LINE	D	WHITE FILLED FULL VERTICAL AND HORIZONTAL INDICATOR LINES
U	DENOTES UNFILLED INDICATOR LINES	N	DENOTES NO DEPRESSED INDICATOR LINES (MP-123-6,-9,-10 ONLY)		



PICTORIALS OF VARIOUS STYLES (AS NOTED)



PURCHASING INFORMATION ONLY

FOR MP123-13, INSERT "538" AT THIS POINT

S - 645 - 3 - L - BB - AHSS RED

IF OTHER THAN BLACK KNOB, SPECIFY COLOR SEE KNOB COLOR CHART

TYPE ALLEN HEAD SET SCREWS (ALWAYS PART OF NUMBER) SEE NOTE 3

WITH 2 SET SCREWS (ALWAYS PART OF NUMBER) SEE NOTE 3

L=WITH WHITE FILLED LINE. NO LETTER= UNFILLED LINE (ON STYLES S-642 & S-654 THERE ARE NO LINES AVAIL)

MFR P/N (SEE CHART)

TMC PART NUMBER WILL BE IN THE FOLLOWING FORM:

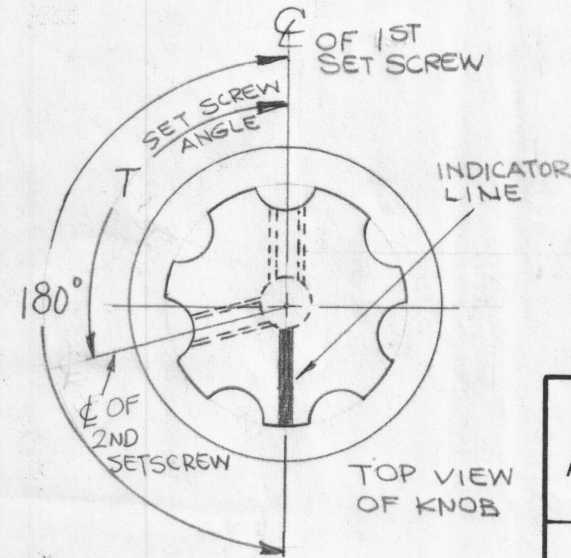
MP 123 - 1 F B

BASIC P/N

CODE FOR INDICATOR LINE PICTORIAL

CODE	KNOB COLOR	MFR COLOR	MFR COLOR NO
R	RED	DUREX	1898
B	BLACK	UNION CARBIDE	BMG 5120
W	BROWN	DUREX	740
M	MAROON	UNION CARBIDE	8052
G	GREEN	PLENCO	706
Y	YELLOW	PLENCO	704
A	GRAY	PLENCO	716

- NOTES:**
- MOLDED THERMOSETTING PLASTIC BODY (PHENOL RESIN OR MELAMINE PHENOL RESIN).
  - INSERTS: BRASS
  - SET SCREWS: ALLEN HEAD, PLAIN STEEL, CADMIUM PLATE, TWO PER KNOB SUPPLIED BY MANUFACTURER.
  - SET SCREW LOCATION: VIEWING KNOB FROM THE TOP, THE FIRST SET SCREW IS 180° FROM INDICATOR LINE AND THE SECOND SET SCREW IS CCW FROM THE FIRST SET SCREW BY AN ANGLE CALLED FOR IN THE DIMENSION CHART, COLUMN "T".



SBS-1		
QTY / UNIT	MODEL USED ON	ASS'Y NO.
APPLICATION		
CODE		

NOTICE TO PERSONS RECEIVING THIS DRAWING

THE TECHNICAL MATERIEL CORPORATION claims proprietary right in the material disclosed hereon. This drawing is issued in confidence for engineering information only and may not be reproduced or used to manufacture anything shown hereon without permission from THE TECHNICAL MATERIEL CORPORATION to the user. This drawing is loaned for mutual assistance and is subject to recall at any time.

UNLESS OTHERWISE SPECIFIED DIMENSIONS ARE IN INCHES AND INCLUDE CHEMICALLY APPLIED OR PLATED FINISHES

TOLERANCES ON

DECIMALS	FRACTIONS
.X ± .05	± 1/64
.XX ± .01	ANGLES
.XXX ± .005	± 0° -30'

MATERIAL

FINISH

QTY. REQ.	ITEM	PART NO.	DESCRIPTION	SYMBOL
LIST OF MATERIAL				
THE TECHNICAL MATERIEL CORP. MAMARONECK, NEW YORK				
KNOB, INSTRUMENT				
SIZE	CODE	IDENT. NO.	DWG NO.	ISSUE
C	82679		MP 123	F
SCALE				SHEET OF