

MP-121	TMC PART NO.	MP-121-1	MEGR. NO.	MP-121-2	"A" HOLE	NONE
					Drill & Tap 10-24	

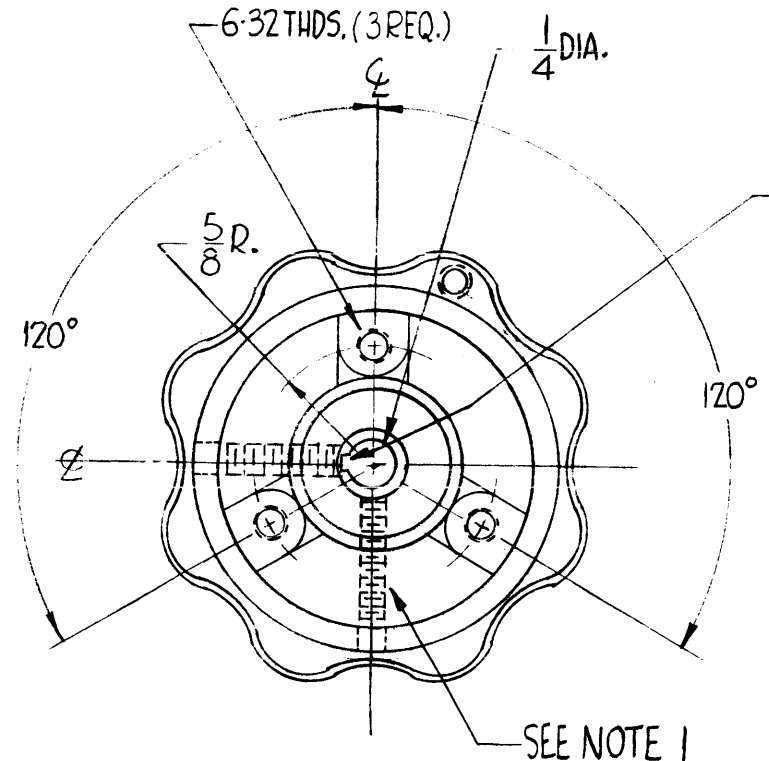
NOTES ~

- 1. MANUFACTURED TO SUPPLY :
(2) EACH 10-32 by 3/8 LG. ALLEN HEAD, CUP POINT SET SCREWS (INSTALLED).

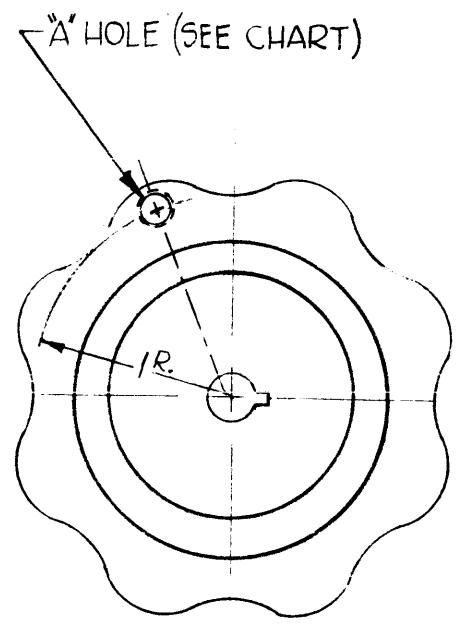
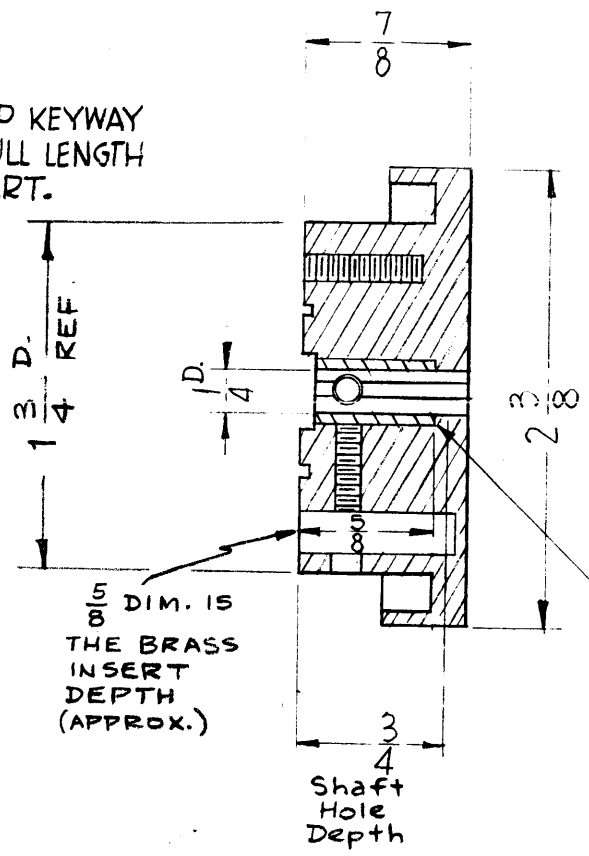
NOTICE TO PERSONS RECEIVING THIS DRAWING

THE TECHNICAL MATERIEL CORPORATION claims proprietary right in the material disclosed hereon. This drawing is issued in confidence for engineering information only and may not be reproduced or used to manufacture anything shown hereon without permission from THE TECHNICAL MATERIEL CORPORATION to the user. This drawing is loaned for mutual assistance and is subject to recall at any time.

Property of:
THE TECHNICAL MATERIEL CORPORATION
MAMARONECK, NEW YORK



1/16 WIDE BY 1/16 DEEP KEYWAY (Blind). KEYWAY FULL LENGTH OF BRASS INSERT.



BRASS INSERT

REF ~ MODIFIED MP-110

SYM	DESCRIPTION	DATE	CH. NO.	DRAFTS	CHECKER	ENG. APP.
B	EXTENDED 1/4" HOLE THRU KNOB	7-22-66	16621	RME	<i>[Signature]</i>	<i>[Signature]</i>
A	KEYWAY RELOCATED	2-19-62	6401	G.S.	<i>[Signature]</i>	<i>[Signature]</i>

UNLESS OTHERWISE SPECIFIED:
DIMENSIONS ARE IN INCHES
TOLERANCES ON FRACTIONS ± 1/64 DECIMALS ± .005 ANGLES ± 1/2°

SCALE: _____
MAXIMUM ALLOWABLE TOLERANCES HAVE BEEN DETERMINED AND ANY DEVIATIONS WILL BE CAUSE FOR REJECTION.
REMOVE ALL BURRS AND SHARP EDGES

2	ACU			4-24-61
REQ. PER UNIT	MODEL	SECTION	ASS'Y. NO.	DATE
USED ON				

REQ. ITEM	PART NO.	DESCRIPTION	SYMBOL
THE TECHNICAL MATERIEL CORP. MAMARONECK, NEW YORK			
STOCK SIZE			
KNOB, FLUTED, KEYWAYED			
MATERIAL			
TYPE & TEMPER	HEAT TREAT. SPEC.	DRAWN	CHECKER
		<i>[Signature]</i>	<i>[Signature]</i>
FINISH & SPEC. NO.		ELEC. DES. APP.	MECH. DES. APP.
MP-121			B