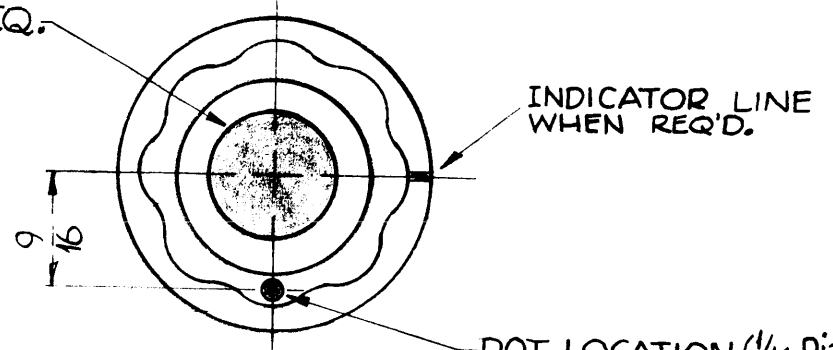


MP-108 B

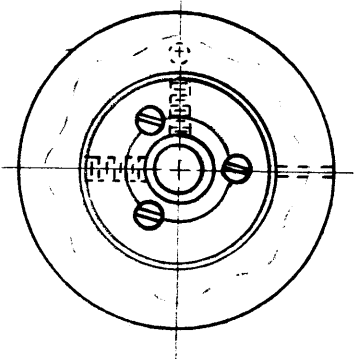
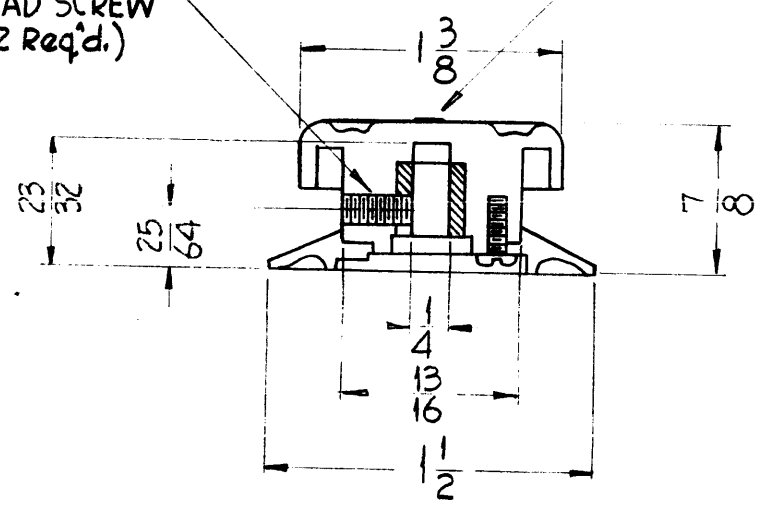
PAINT CENTER CIRCLE
COLOR DESIGNATED,
WHEN REQ'D.



INDICATOR LINE
WHEN REQ'D.

DOT LOCATION ($1/16$ Dia. x $1/32$ Deep.)
WHEN REQ'D.

8-32 ALLEN
HEAD SCREW
(2 Req'd.)



TMC PART NO.	INDICATOR LINE	WHITE DOT	CENTER CIRCLE COLORED	MFG No.
MP-108-1	UNFILLED	NONE	NONE	4106 UNFILLED
MP-108-2	WHITE FILLED	NONE	NONE	4106 FILLED
MP-108-3	UNFILLED	YES	NONE	4106 DOT
MP-108-4	WHITE FILLED	NONE	YELLOW	
MP-108-5	WHITE FILLED	NONE	GREEN	

* Center Circle to be Glossy Enamel.

NOTES - EACH KNOB SHALL BE DELIVERED WITH TWO 8-32 ALLEN HEAD TYPE, CADMIUM PLATED, CUP POINT SET SCREWS INSTALLED.
THE INSERT SHALL BE BRASS.

NOTICE TO PERSONS RECEIVING THIS DRAWING

THE TECHNICAL MATERIEL CORPORATION claims proprietary right in the material disclosed hereon. This drawing is issued in confidence for engineering information only and may not be reproduced or used to manufacture anything shown hereon without permission from THE TECHNICAL MATERIEL CORPORATION to the user. This drawing is loaned for mutual assistance and is subject to recall at any time.

Property of:
THE TECHNICAL MATERIEL CORPORATION
MAMARONECK, NEW YORK

REF.: HARRY DAVIES MOLDING CO. STYLE N°4106

SYM	DESCRIPTION	DATE	CH. NO.	DRAFTS	CHECKER	ENG. APP.
B	Redrawn and Added - 4 & 5	11-30-60	3625	DM	JCB	[Signature]

UNLESS OTHERWISE SPECIFIED:
DIMENSIONS ARE IN INCHES
TOLERANCES ON FRACTIONS $\pm 1/64$ DECIMALS $\pm .05$ ANGLES $\pm 1/20$

SCALE:
MAXIMUM ALLOWABLE TOLERANCES HAVE BEEN DETERMINED AND ANY DEVIATIONS WILL BE CAUSE FOR REJECTION.
REMOVE ALL BURRS AND SHARP EDGES

REQ. PER UNIT	MODEL	SECTION	ASS'Y. NO.	DATE

REQ.	ITEM	PART NO.	DESCRIPTION	SYMBOL
			THE TECHNICAL MATERIEL CORP. MAMARONECK, NEW YORK	
			STOCK SIZE	
			KNOB, SKIRT TYPE	
			MATERIAL	
			TYPE & TEMPER	
			HEAT TREAT. SPEC.	
			FINISH & SPEC. NO.	
			ELEC. DES. APP.	
			MECH. DES. APP.	
			MP-108	B