

IF IT IS FOUND DESIRABLE TO CHANGE ANY TOLERANCE OR OTHER DETAIL SPECIFIED ON THIS DRAWING NOTIFY THE PURCHASER PROMPTLY.

MO-105

MAXIMUM ALLOWABLE TOLERANCES HAVE BEEN DETERMINED AND DEVIATIONS WILL BE CAUSE FOR REJECTION. REMOVE ALL BURRS AND SHARP EDGES

USED ON

MODEL

PROJECT NO.

ASS'Y. NO.

DATE

ADK/S

MOTOR,rewind: induction type, CCW rotation;  
1/125 hp, 110 volts 50/60 cps, single phase;  
0.4 amps at 1550 rpm. Heinze Z104, B47

Ref: TR McElroy

REQ.	ITEM	PART NO.	DESCRIPTION	SYMBOL
			THE TECHNICAL MATERIEL CORP. MAMARONECK. NEW YORK	
STOCK SIZE				
			MOTOR,rewind: induction type	
MATERIAL		WEIGHT PER PC.		
			<i>EAM</i>	
TYPE & TEMPER			<i>WSE</i>	
			DRAWN	ELEC. DES. APP.
			<i>EAM</i>	
HEAT TREAT. SPEC.			MECH. DES. APP.	
			<i>JH</i>	
FINISH & SPEC. NO.			FINAL APPROVAL	
			MO-105	

ISSUE ITEM CHANGED FROM DATE CN. NO. DRAFTS CHECKER ENG. APP.

TOLERANCES

SCALE

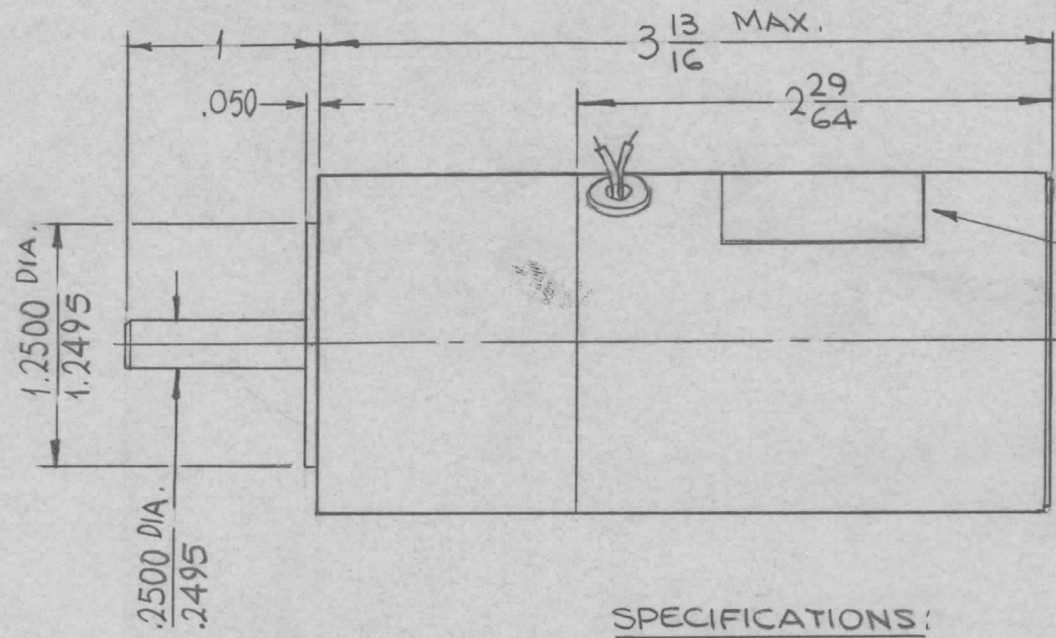
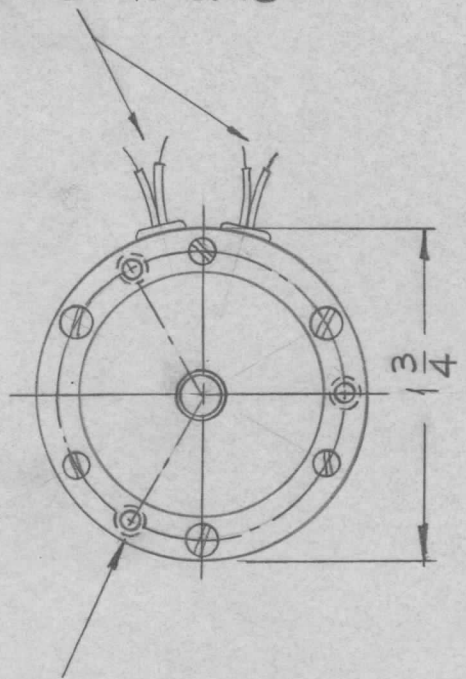
ALL OTHERS

DEC. DIM.  $\pm$   
FRAC. DIM.  $\pm$   
ANGULAR DIM.  $\pm$

DRILL, PUNCH, COMMERCIAL STOCK SIZES AND MANUFACTURERS TOLERANCES ARE NOT INCLUDED.

REQ. PER UNIT	USED ON			MO125	Ø
	MODEL	ASS'Y. NO.	DATE		
1	RFTA-1		10-5-65		

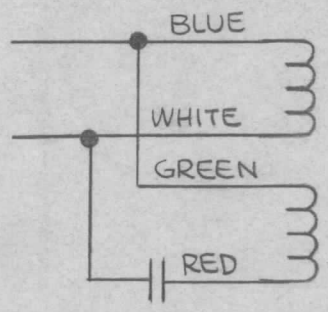
4 LEADS 10" LONG



DECAL NAMEPLATE  
TMC NO.  
MO125

(3) 6-32 NC-2 TAP  
3/16 DEEP, EQUALLY  
SPACED ON A  
1.535 ± .002 DIA.

NOTE.  
COUNTER CLOCKWISE ROTATION  
OUTPUT END OF SHAFT.



SPECIFICATIONS:  
220V ± 10%, 50/60 CY, 1 PH  
8/10 RPM 0.06AMPS  
300. OZ.IN.  
MAX. CONT. LOAD  
AMBIENT TEMP RANGE -0°C TO +71°C  
SHAFT - STAINLESS STEEL  
.33UF 330VAC CAPACITOR

REQ.	ITEM	PART NO.	F. BUDETTI	DESCRIPTION	SYMBOL	
				<b>THE TECHNICAL MATERIEL CORP.</b> MAMARONECK. NEW YORK		
				MOTOR		
Ø	ORIGINAL RELEASE	10/20/65	Ø			
SYM	DESCRIPTION	DATE	CH. NO.	DRAFTS	CHECKER	ENG. APP.
UNLESS OTHERWISE SPECIFIED DIMENSIONS ARE IN INCHES AND INCLUDE CHEMICALLY APPLIED OR PLATED FINISHES		SCALE	1:1			
DECIMALS .X ± .05 .XX ± .01 .XXX ± .005	TOLERANCES	FRACTIONS ± 1/64 ANGLES ± 0° 30'	CODE C	S401-116 (BC1613G)		
				BLACK ANODIZE		
				FINISH & SPEC. NO.	ELEC. DES. APP.	MECH. DES. APP.
					10/19/65	
					MO125	Ø

APPLICATION		REVISIONS							
QTY	MODEL USED ON	ASSY NO.	LTR	DESCRIPTION	DATE	E.M.N.NO	DRAFT	CHKD	APPD
2	TU-ZB		Ø	ORIGINAL RELEASE	11-679	A	MAG		FB

**GEARHEAD MOTOR**



NCI 1153  
REVERSIBLE

19 RPM, 120V, 50/60 Hz, 1/50 HP

(BODINE ELEC CO (NCI-1153))

Reversible integral gearhead motor  
 Capacitor run, concentric shaft, ball bearing  
 Output speed 19 RPM at 60 Hz, 16 RPM at 50 Hz  
 Torque 21 in/lbs.  
 Rated continuous duty, .38 Amps, 40° C rise over ambient  
 Thermal overload protected  
 Output shaft 3/8" dia. x 1" long with flat  
 End mounting on four 10/32 tapped holes  
 Size: 3-5/16" dia. x 4-1/2" long excluding shaft  
 Wire lead connections. Removed from equipment

UNLESS OTHERWISE SPECIFIED DIMENSIONS ARE IN INCHES AND INCLUDE CHEMICALLY APPLIED OR PLATED FINISHES		REQ'D	ITEM	PART NUMBER	DESCRIPTION	SYM.					
DECIMALS	FRACTIONS	LIST OF MATERIAL									
.X ± .05	1/64						THE TECHNICAL MATERIEL CORP.				
.XX ± .01	ANGLES						MAMARONECK, NEW YORK				
.XXX ± .005	0° .30'	MOTOR, REVERSIBLE									
MATERIAL		FINAL APPROVAL	DATE	SIZE							
		MECH. DES.	DATE	CODE IDENT. NO.							
		ELECT. DES.	DATE	DWG NO.							
FINISH		CHECKED	DATE	SCALE							
		DRAWN	DATE	SHEET							
		NOTICE TO PERSONS RECEIVING THIS DRAWING			OF						
		THE TECHNICAL MATERIEL CORPORATION claims proprietary right in the material disclosed hereon. This drawing is issued in confidence for engineering information only and may not be reproduced or used to manufacture anything shown hereon without permission from THE TECHNICAL MATERIEL CORPORATION to the user. This drawing is loaned for mutual assistance and is subject to recall at any time.			ISSUE						
					Ø						

APPLICATION		REVISIONS							
QTY	MODEL USED ON	ASS'Y NO.	LTR	DESCRIPTION	DATE	E.M.N.NO	DRAFT	CHKD	APPD
2	SPT3K/VHF	AX8080 AX8081	Ø	ORIG RELEASE FOR PROD	4/11/69		CV		<i>[Signature]</i>

MFR (TMC CODE NO.): S401-487

MFR PART NUMBER: 4K872

ELECTRICAL SPECIFICATIONS

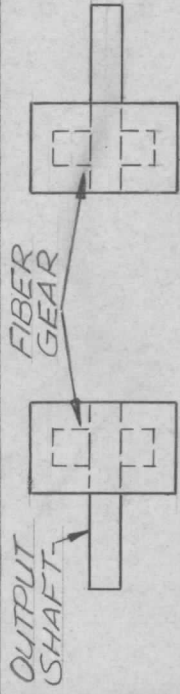
OUTPUT RPM;  
F/L: 100.0, NL:306 HP: 1/15  
F/L TORQUE;  
IN. LBS CONT: 27

VOLTS: 115 VAC, 25/60 CPS

AMP: 1.3  
INPUT RPM: 5000  
INPUT MOTOR: 2M087

MECHANICAL SPECIFICATIONS

1/2 DIA SHAFT  
2-5/8 SHAFT HEIGHT  
52/1 RATIO



*TMC TO REMOVE OUTPUT  
SHAFT AND REPLACE TO  
OPPOSITE SIDE*

STANDARD TMC MODIFIED

UNLESS OTHERWISE SPECIFIED DIMENSIONS ARE IN INCHES AND INCLUDE CHEMICALLY APPLIED OR PLATED FINISHES		REQ'D ITEM	PART NUMBER	DESCRIPTION	SYM.
DECIMALS	FRACTIONS	LIST OF MATERIAL			
.X ± .05	1/64	FINAL APPROVAL	DATE	THE TECHNICAL MATERIEL CORP.	
.XX ± .01	TOLS.	<i>[Signature]</i>	4-11-69	MAMARONECK, NEW YORK	
.XXX ± .005	ANGLES	MECH. DES.	DATE	GEAR MOTOR, AC	
	0° - 30°	<i>[Signature]</i>	4-11-69		
MATERIAL		ELECT. DES.	DATE		
		<i>[Signature]</i>	4-11-69		
FINISH		CHECKED	DATE		
		<i>[Signature]</i>	4-11-69		
		DRAWN	DATE		
		<i>[Signature]</i>	4-11-69		

SIZE	CODE IDENT. NO.	DWG NO.	ISSUE
A	82679	MO 8001	Ø
SCALE	SHEET		OF

NOTICE TO PERSONS RECEIVING THIS DRAWING  
THE TECHNICAL MATERIEL CORPORATION claims proprietary right in the material disclosed hereon. This drawing is issued in confidence for engineering information only and may not be reproduced or used to manufacture anything shown hereon without permission from THE TECHNICAL MATERIEL CORPORATION to the user. This drawing is loaned for mutual assistance and is subject to recall at any time.