

IF IT IS FOUND DESIRABLE TO CHANGE ANY TOLERANCE OR OTHER DETAIL SPECIFIED ON THIS DRAWING NOTIFY THE PURCHASER PROMPTLY.

MAXIMUM ALLOWABLE TOLERANCES HAVE BEEN DETERMINED AND DEVIATIONS WILL BE CAUSE FOR REJECTION. REMOVE ALL BURRS AND SHARP EDGES

NOTE:

ROTOR MUST BE EXTREMELY FREE RUNNING.

MO-100 B

COIL SPECIFICATION

WINDINGS	URNS	SIZE WIRE	COLD RES ± 2 1/2%
STATOR	780	# 26	11.9
SHADING, EACH	300	# 35	24.2

REAR OF ARMATURE SHAFT NOT TO PROJECT BEYOND BEARING HOUSING.

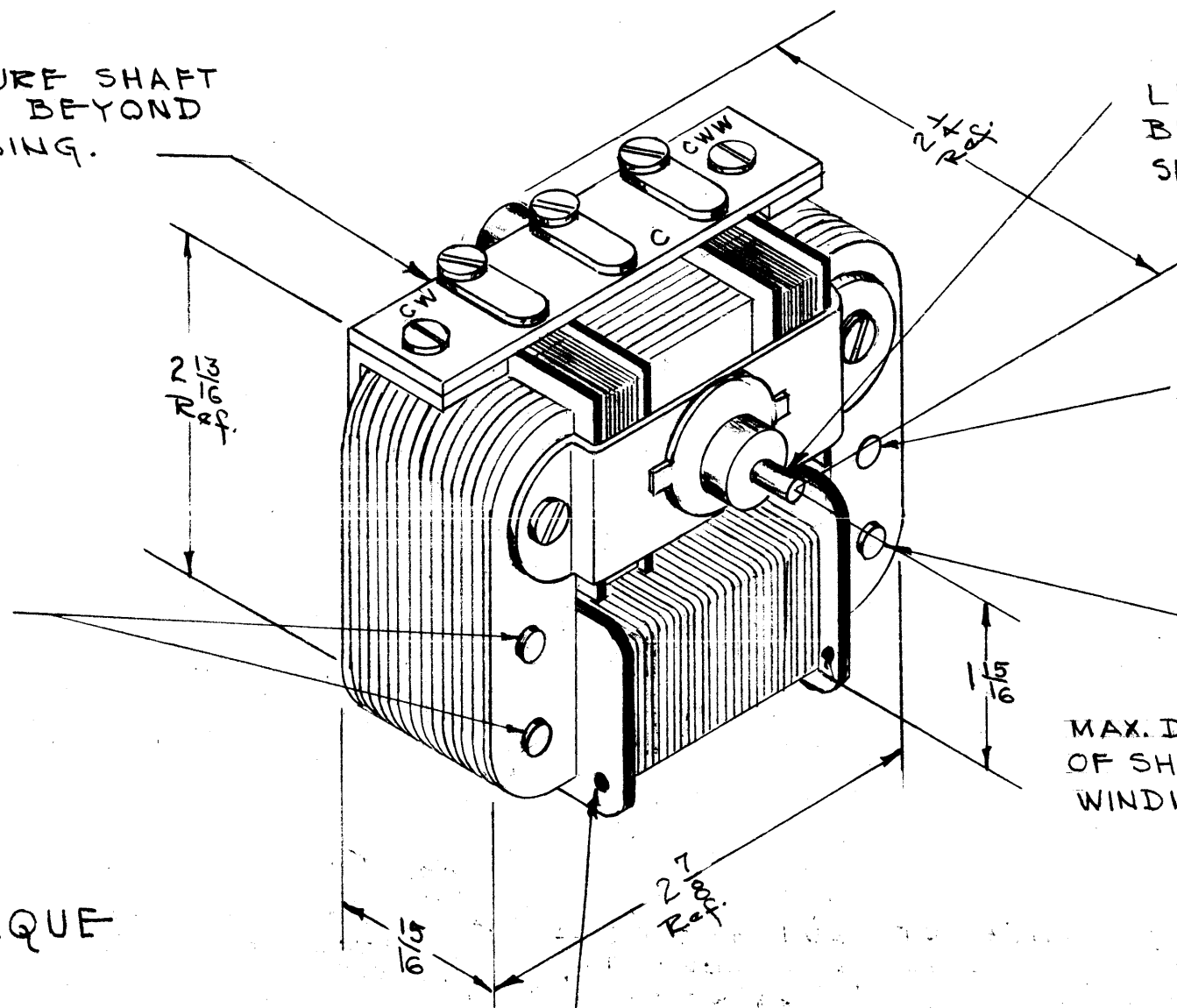
LENGTH OF SHAFT BEYOND BEARING HOUSING 5/16 MIN., 1/2 MAX. SHAFT DIA. (.125)

NOTICE TO PERSONS RECEIVING THIS DRAWING

THE TECHNICAL MATERIEL CORPORATION claims proprietary right in the material disclosed hereon. This drawing is issued in confidence for engineering information only and may not be reproduced or used to manufacture anything shown hereon without permission from THE TECHNICAL MATERIEL CORPORATION to the user. This drawing is loaned for mutual assistance and is subject to recall at any time.

Property of:

THE TECHNICAL MATERIEL CORPORATION
MAMARONECK, NEW YORK
RIVETS



27 (.144) DRILL-CLEARANCE HOLE

RIVET

MAX. DISTANCE BETWEEN CENTER OF SHAFT AND OUTSIDE OF STATOR WINDING 1 5/16.

SOLDER LUGS TO THIS SIDE

2500 R.P.M.
LOCKED ROTOR TORQUE
.18 LB. IN.

REF: BARBER-COLMAN CO. TYPE: BYAE-4787

REQ.	ITEM	PART NO.	DESCRIPTION	SYMBOL
STOCK SIZE			THE TECHNICAL MATERIEL CORP. MAMARONECK, NEW YORK	
MATERIAL			TUNING MOTOR	
WEIGHT PER PC.			115V 60~	
TYPE & TEMPER			JAN 8-6-52 DRAWN	
HEAT TREAT. PEC.			CDD CHECKER	
FINISH & SPEC.			SUPER 6-DES AMS 235	
USED ON			MO-100	

ISSUE	ITEM	CHANGED FROM	DATE	CN. NO.	DRAFTS	CHECKER	ENG. APP.
B	4	WAS OYAZ-6941	10/9/52	2	ESA	LAO	
	3	50 Removed	8-25-52	1	HAO		
A	2	15 Lb.	8-25-52	1	HAO		
	1	shaft dia. (.152)	8-25-52	1	HAO		

TOLERANCES		SCALE:	
ALL OTHERS	DEC. DIM. ± FRAC. DIM. ± ANGULAR DIM. ±	VOX	101
DRILL, PUNCH, COMMERCIAL STOCK SIZES AND MANUFACTURERS TOLERANCES ARE NOT INCLUDED.		A-586	8-6-52
		MODEL	PROJECT NO.
		ASSY. NO.	DATE