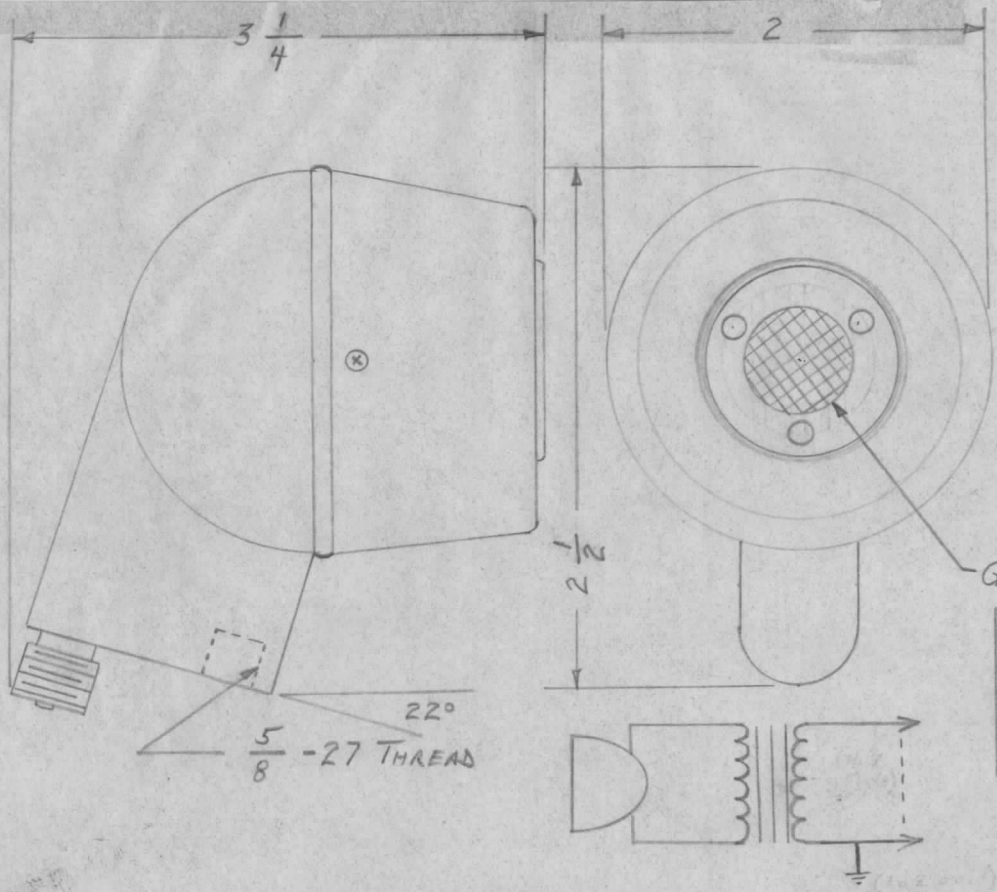


REQ. PER UNIT	USED ON			MK105	Ø
	MODEL	ASS'Y. NO.	DATE		
1	MK102	A1190	14 DEC 1965		



SPECIFICATIONS
 POLAR PATTERN: NONDIRECTIONAL
 GENERATING ELEMENT: DYNAMIC
 IMPEDANCE: SEE CHART
 CABLE CONNECTOR: PL250F
 CABLE: 16 FOOT SINGLE CONDUCTOR, SHIELDED
 CASE MATERIAL: DIE-CAST ZINC
 FINISH: SATIN CHROMIUM
 FREQUENCY RESPONSE: 0.1 TO 5KC
 OUTPUT LEVEL: -55db (AT 1/4 INCH SOURCE)

GRILL DESIGN OPTIONAL

TMC PART No.	IMPEDANCE	OUTPUT REF. LEVEL
MK105-1	HIGH (25KΩ Nom)	1V/DYNE/CM ²
MK105-2	LOW (250Ω Nom)	1mW/10 DYNES/CM ²

STANDARD DRAWING

SCHEMATIC

REF: SW178

ISSUE	ITEM	CHANGED FROM	DATE	CH. NO.	DRAFTS	CHECKER	ENG. APP.	REQ. ITEM	PART NO.	DESCRIPTION	SYMBOL						
										THE TECHNICAL MATERIEL CORP. MAMARONECK, NEW YORK MICROPHONE, DYNAMIC, DIFFERENTIAL							
A		Spec. revised	10/14/70	20030	W.	P.E. & W.			STOCK SIZE								
Ø		ORIGINAL RELEASE	12/20/65			J. DeM...			MATERIAL								
TOLERANCES			SCALE: NONE 5401-306 (607)					7RD 14 DEC 65		12/20/65		M. H. ...					
DEC. DIM. ± FRAC. DIM. ± ANGULAR DIM. ±			FOR REF. ONLY					TYPE & TEMPER		HEAT TREAT. SPEC.		DRAWN		CHECKED		FINAL APPROVAL	
			MAXIMUM ALLOWABLE TOLERANCES HAVE BEEN DETERMINED AND ANY DEVIATIONS WILL BE CAUSE FOR REJECTION. REMOVE ALL BURRS AND SHARP EDGES									12/20/65		MK105		A	
								FINISH & SPEC. NO.		ELEC. DES. APP.		MECH. DES. APP.					